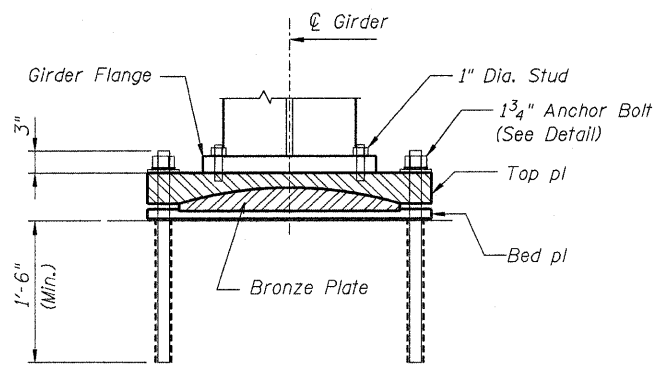
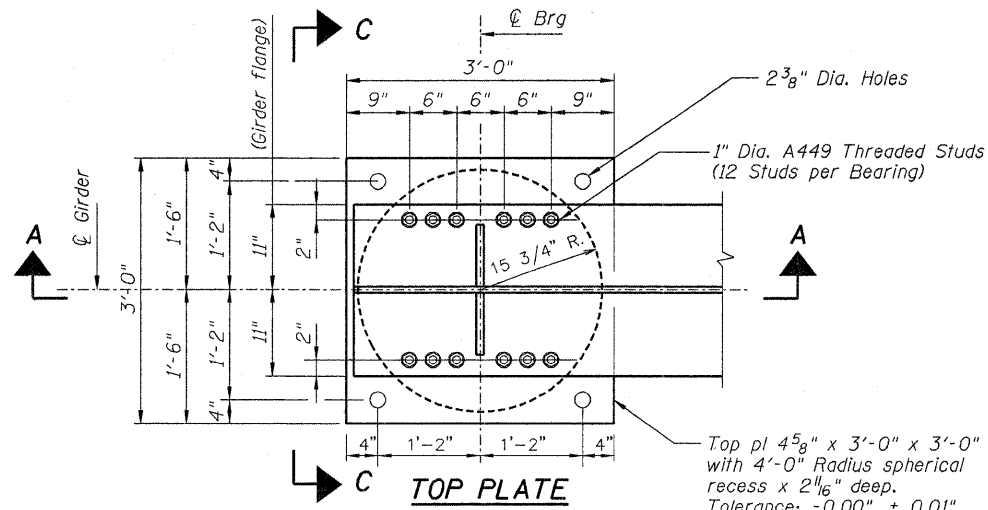


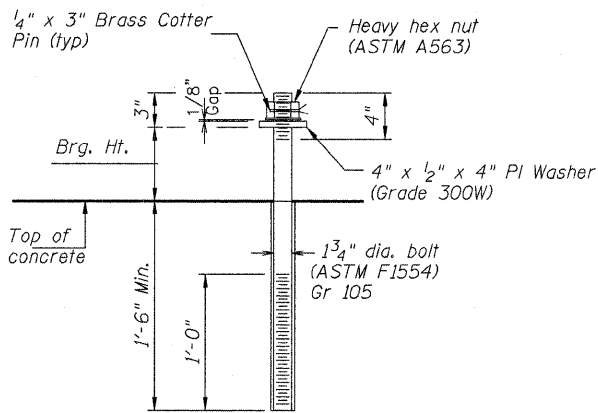
STATE OF ILLINOIS
DEPARTMENT OF TRANSPORTATION



SECTION C-C



TOP PLATE



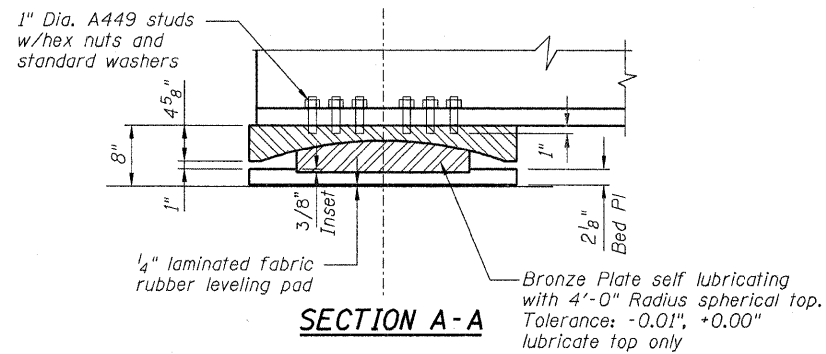
ANCHOR BOLT DETAIL

Notes:
Concrete to be drilled after determining bolt location. Bolts to be grouted using non-shrink grout. Bolts, Nuts and Washers shall be fully galvanized.

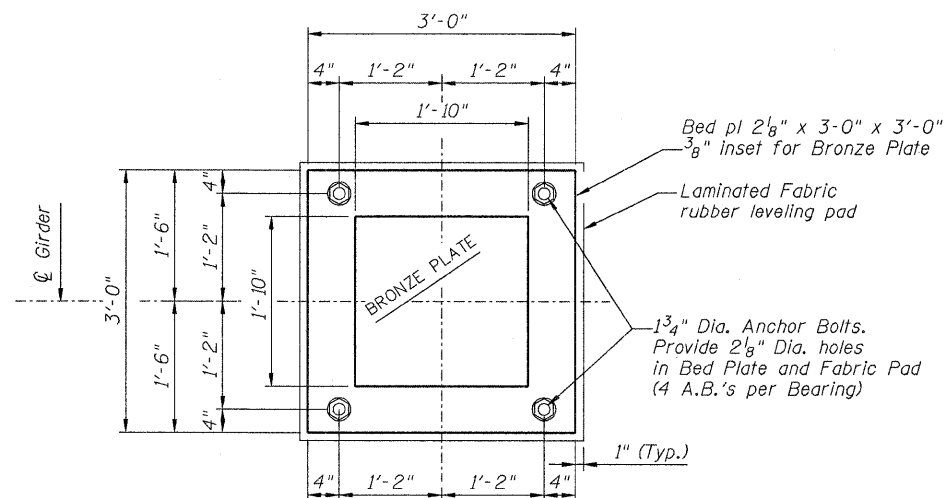
BEARING NOTES:

- Design and workmanship shall be in accordance with AREMA Chapter 15.
- Material shall be in accordance with the following Specifications:
Structural Steel: ASTM A709 grade 50.
Bronze Plates: ASTM B22-82 Copper alloy UNS No. C863000, C91100 or C91300.
Welding: AWS D1.5
Anchor Bolts: ASTM F1554 (Grade 55)
Studs: A449, Type 1 Galvanized (See Special Provisions)
- All holes shall be drilled and sub-punched and reamed.
- All non-sliding surfaces of bearings shall be zinc-metallized in accordance with CAS G189. Zinc coating shall not be less than 0.01".
- Bearings shall be shipped assembled with 5/16 inch plates and 5/8 inch diameter machine bolts. Plates shall be removed after anchor bolts have been installed (3 plates per Bearing).

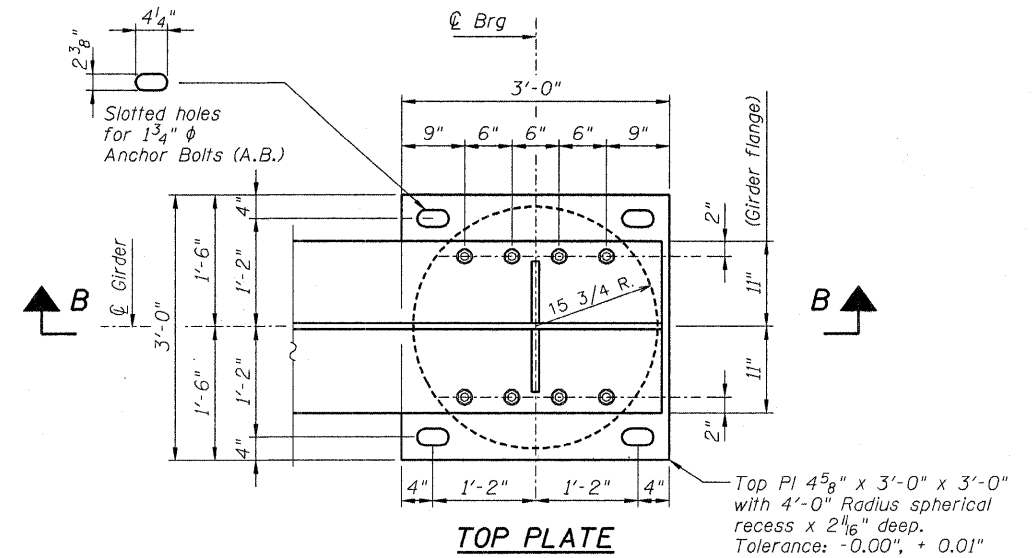
DESIGNED	KJH
CHECKED	BKB
DRAWN	RJ
CHECKED	BKB



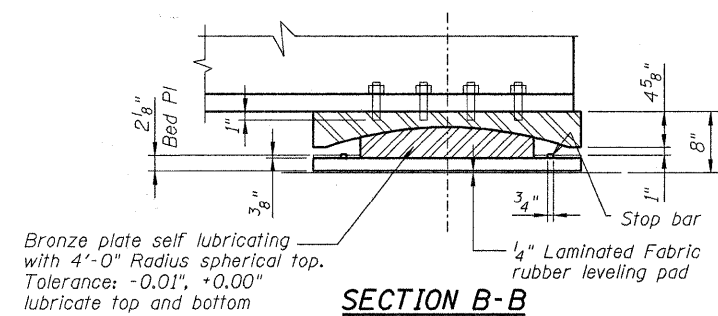
SECTION A-A



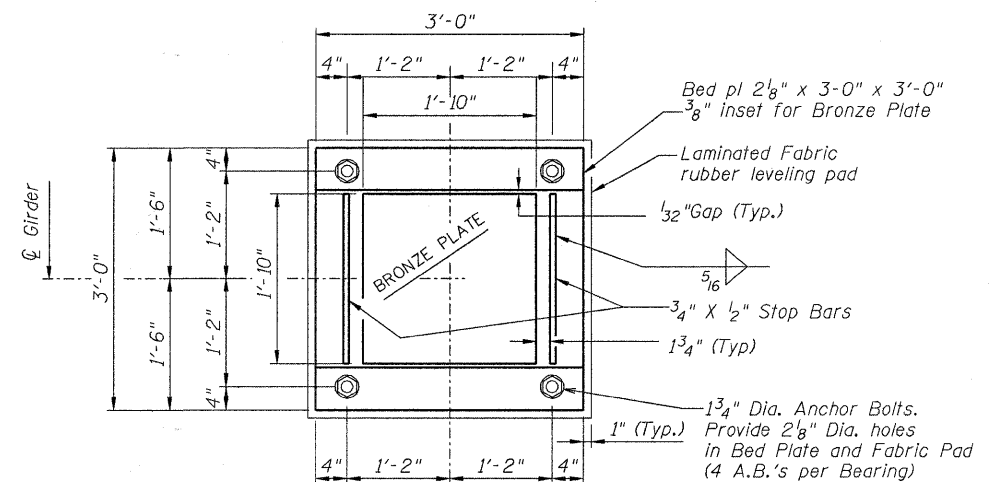
BED PLATE AND FABRIC PAD
FIXED BEARING DETAILS



TOP PLATE



SECTION B-B



BED PLATE AND FABRIC PAD
EXPANSION BEARING DETAILS

McDonough Associates Inc.
Engineers / Architects
130 East Randolph Street
Chicago, Illinois 60601
(312) 946-8600

CN North America's Railroad	
FREEPORT SUBDIVISION	
BRIDGE NO. W40.07	
SHEET NO. S13	RTE.
S21 SHEETS	361

BEARING DETAILS
STRUCTURE NO. 045-3163

SECTION	COUNTY	TOTAL SHEETS	SHEET NO.
06-00214-02-BR	KANE	219	140
SN 045-3163		CONTRACT NO. 63073	
FED. ROAD DIST. NO. 1 ILLINOIS FED. AID PROJECT			