

Benchmark RM-12:
 A Standard US Geological Survey Disk set in the south headwall of a culvert located on State Route 31, about 130 feet west of McLean Boulevard. Elevation of 710.37 (NGVD of 1929) as shown on Firm Community Panel Number 170896 0040A, effective date March 1, 1982. (Also known as NGS-K19, RESET 1967.)

Existing Structure: None

STATE OF ILLINOIS
 DEPARTMENT OF TRANSPORTATION **TOTAL BILL OF MATERIAL**

Pay Item	Unit	Quantity
Structure Excavation	Cu Yd	650
Concrete Structures	Cu Yd	123
Form Liner Textured Surface	Sq Ft	2,958
Stud Shear Connectors	Each	750
Untreated Timber Lagging	Sq Ft	2,790
Reinforcement Bars, Epoxy Coated	Pound	15,380
Steel Railing	Foot	207
Furnishing Soldier Piles (HP Section)	Foot	94
Furnishing Soldier Piles (Built-Up Section)	Foot	775
Name Plate	Each	1
Geocomposite Wall Drain	Sq Yd	310
Pipe Underdrains For Structures 4"	Foot	206
Concrete Gutter, Type B	Foot	71
Permanent Ground Anchor	Each	35
Drilling And Setting Soldier Piles (In Soil)	Cu Ft	2,404
Drilling And Setting Soldier Piles (In Rock)	Cu Ft	50.0

* Special Provisions

GENERAL NOTES:

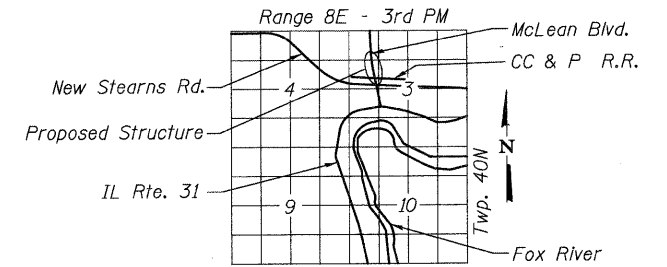
1. Reinforcement bars shall conform to the requirements of ASTM A 706 Gr 60 deformed bars.
2. Reinforcement bars designated (E) shall be epoxy coated.
3. All exposed concrete edges shall have a 3/4" x 45 degree chamfer.
4. It shall be the contractor's responsibility to verify the location of all utilities prior to starting construction. Contact j.u.l.i.e. at 800-892-0123.
5. See drainage sheets for location of drainage structures for connection of underdrain system.
6. Contractor shall be responsible for design of timber lagging (per special provisions). Lagging design shall be submitted to engineer for approval. Quantity shown in bill of materials is an estimate for bidding purposes only.
7. See special provision "Permanent Ground Anchor" for installation and testing of permanent ground anchors.
8. Paved ditches shall have transverse joints cut 1/3" deep every 10'. Joints shall then be sealed with hot poured joint sealer. Paved ditch construction shall conform to Section 606. Joint sealer shall be in accordance with Section 420.14 and Section 1050.02.
9. If the Contractor elects to use form ties, only fiberglass ties shall be allowed. See Special Provisions.

INDEX OF SHEETS

WW1	General Plan and Notes
WW2-WW3	Pile and Anchor Locations
WW4	Pile and Anchor Schedule
WW5	Concrete Facing Details
WW6	Section & Details
WW7	Railing Details
WW8-WW9	Soil Boring Logs

STATION 811+62.99
 BUILT 20__ BY
 STATE OF ILLINOIS
 F.A.U. RT. 2509 SEC. 06-00214-02-BR
 STRUCTURE NO. 045-2038

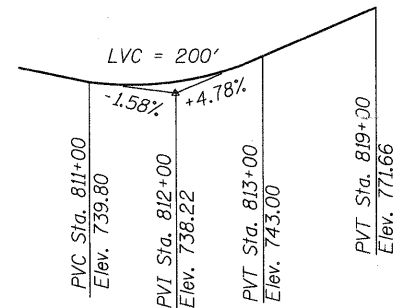
NAME PLATE
 See STD 515001



LOCATION SKETCH

LEGEND

- ◆ Soil Boring Location
- Ⓜ Pile Number



**PROFILE GRADE
 McLEAN BOULEVARD**

DESIGN SPECIFICATIONS

2002 AASHTO Standard Specifications

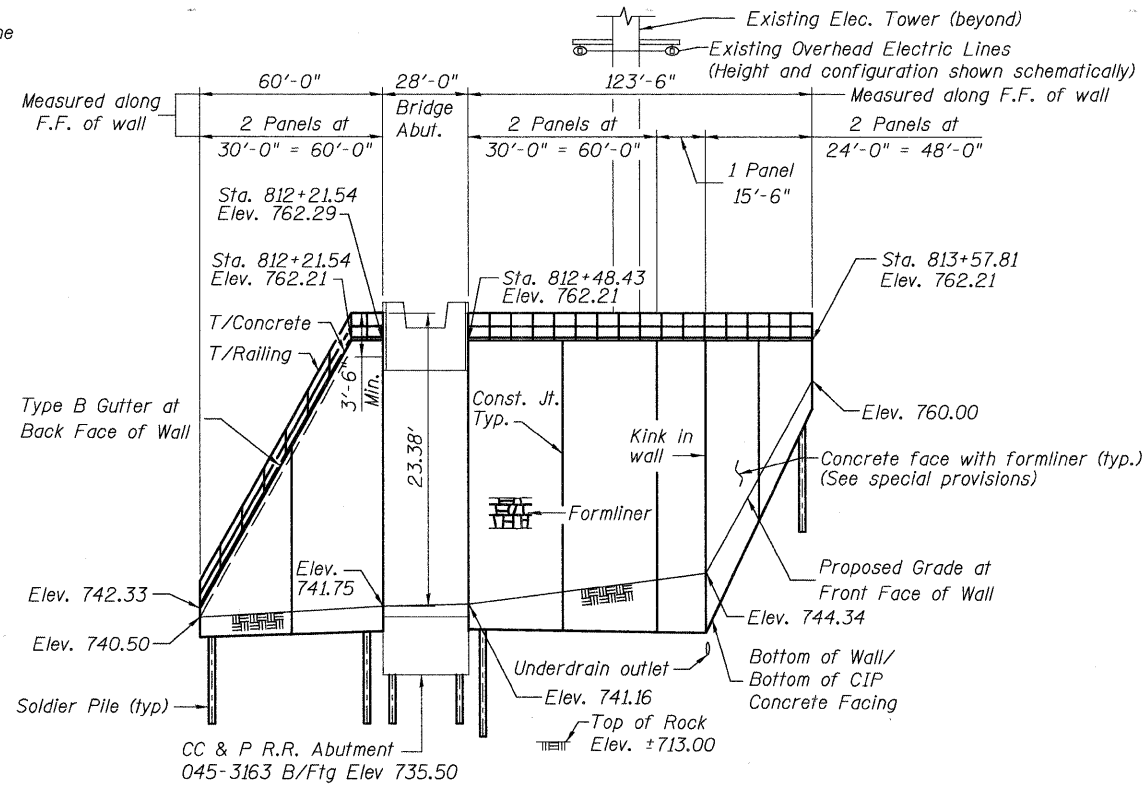
DESIGN STRESSES

FIELD UNITS

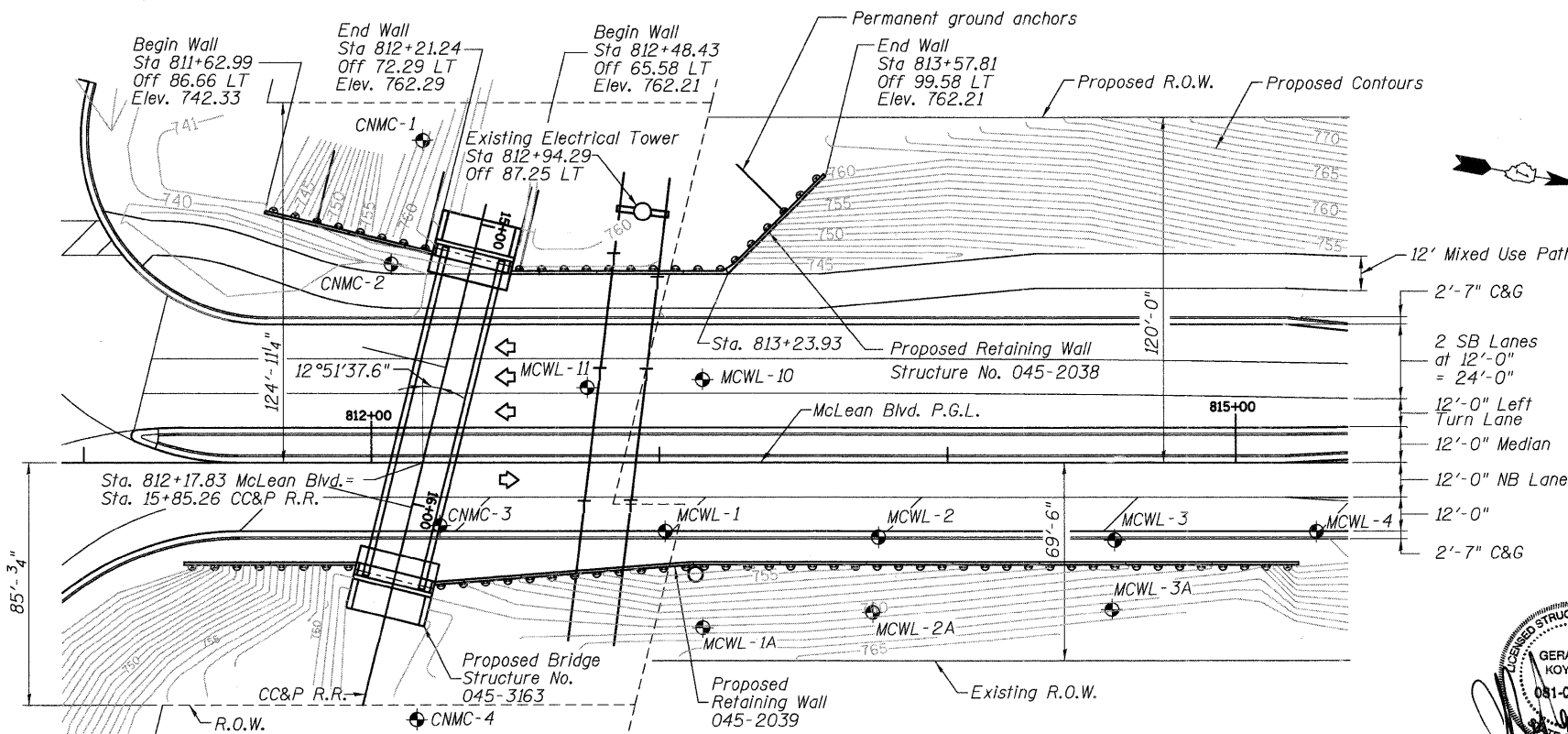
- f'_s (Anchor Strands) = 270,000 psi
- f'_{sj} (Anchor Strands) = 201,900 psi
- f_y (Piles) = 36,000 psi (AASHTO M270 Gr. 36)
- f_y (Anchor Bearing P's) = 36,000 psi
- f_y (Reinforcement) = 60,000 psi
- f'_c (Concrete) = 3,500 psi
- f'_c (Grout) = 4,000 psi
- f'_c (Encasement) = 4,000 psi

GENERAL PLAN

**DRILLED SOLDIER PILE WALL
 McLEAN BOULEVARD
 SECTION 06-00214-02 BR
 KANE COUNTY
 STA 811+62.99 TO STA 813+57.81
 STRUCTURE NO. 045-2038**

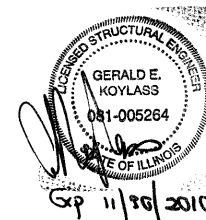


ELEVATION - RETAINING WALL STRUCTURE NO. 045-2038



PLAN

DESIGNED	JCE/KJH
CHECKED	PMH
DRAWN	JCE/PMH
CHECKED	KJH



McDonough Associates Inc.
 Engineers / Architects
 130 East Randolph Street
 Chicago, Illinois 60601
 (312) 946-8600

SHEET NO. WW1	RTE.	SECTION	COUNTY	TOTAL SHEETS	SHEET NO.
WW9 SHEETS	361	06-00214-02-BR	KANE	219	149
CONTRACT NO. 63073					
FED. ROAD DIST. NO. 1 ILLINOIS FED. AID PROJECT					