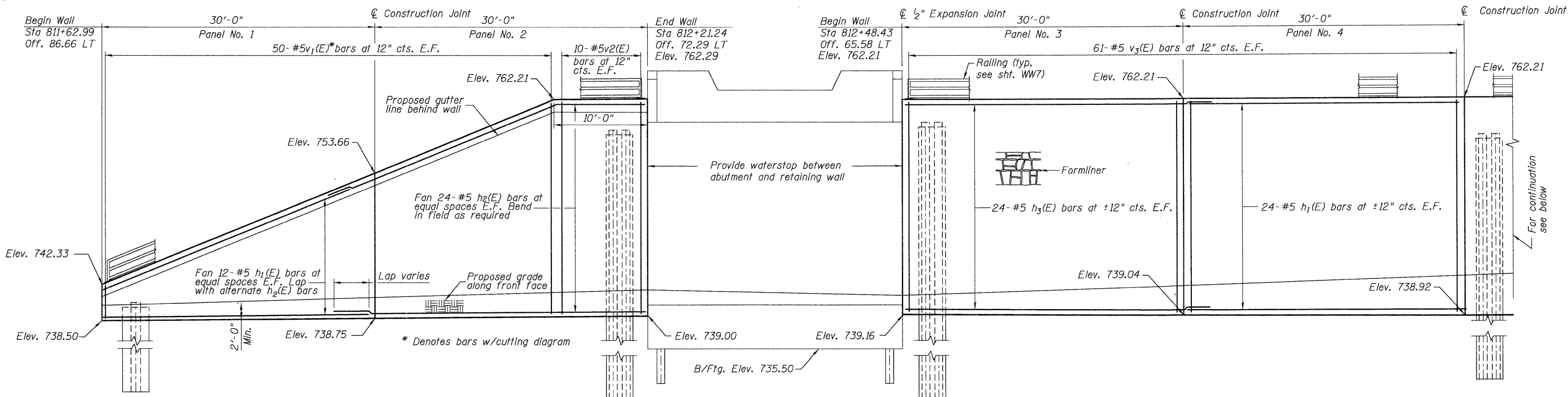
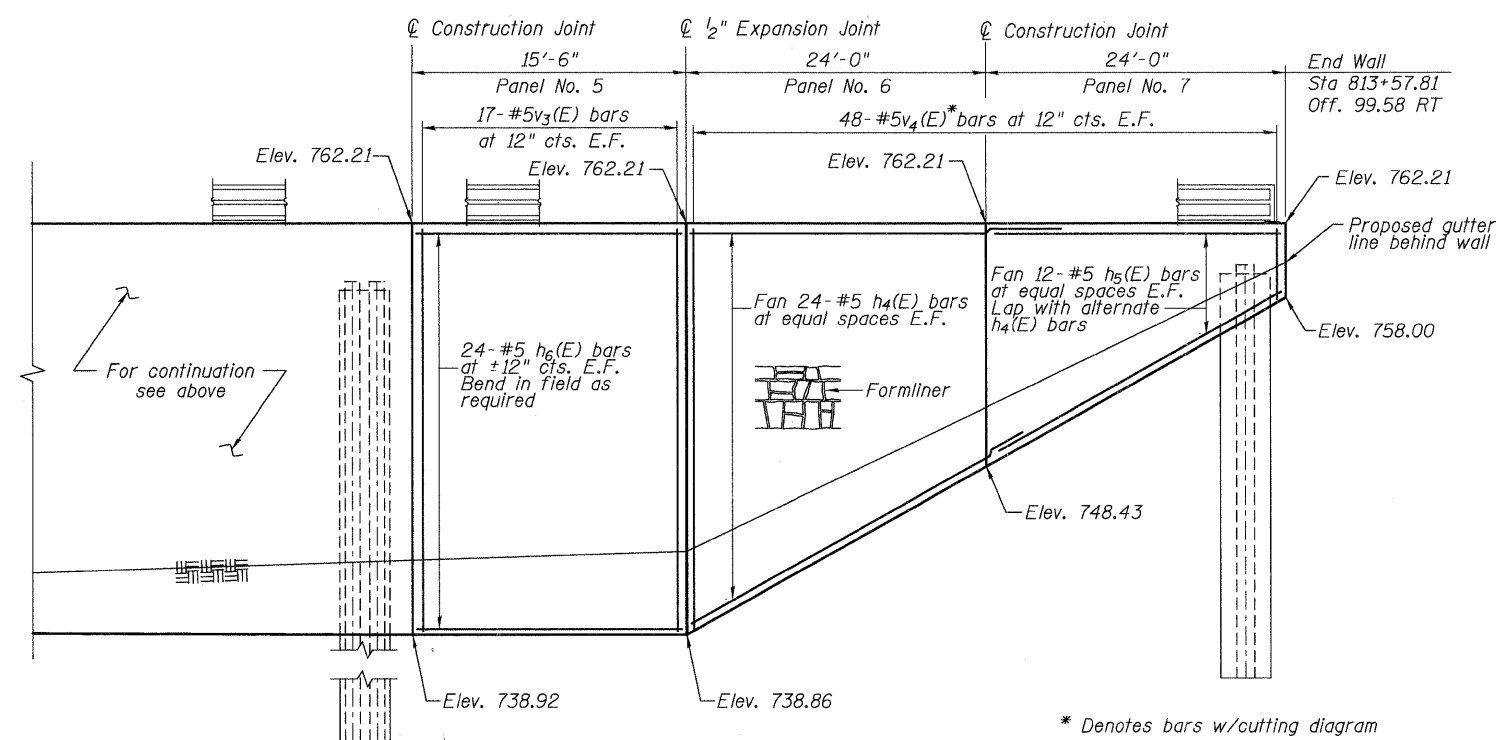


STATE OF ILLINOIS
DEPARTMENT OF TRANSPORTATION



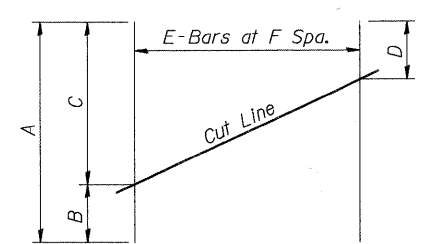
ELEVATION



ELEVATION (continued)

BAR LIST

Bar	No.	Size	Length	Shape
$h_1(E)$	72	#5	29'-8"	————
$h_2(E)$	48	#5	36'-8"	————
$h_3(E)$	48	#5	32'-4"	————
$h_4(E)$	48	#5	30'-6"	————
$h_5(E)$	24	#5	23'-8"	————
$h_6(E)$	48	#5	15'-2"	————
* $v_1(E)$	50	#5	26'-4"	————
$v_2(E)$	20	#5	22'-10"	————
$v_3(E)$	156	#5	22'-7"	————
* $v_4(E)$	48	#5	25'-9"	————
Reinforcement Bars, Epoxy Coated			Pound	15,380



FIELD CUTTING DIAGRAM

Order bars full length and cut as shown

Bar	A	B	C	D	E	F
$v_1(E)$	26'-4"	3'-6"	22'-10"	3'-6"	50	1'-0"
$v_4(E)$	25'-9"	2'-10"	22'-11"	2'-10"	48	1'-0"

* Indicates cutting diagram
Reinforcement bars designated (E) shall be epoxy coated.
Min. bar lap = 2'-2"

DESIGNED	JCE/KJH	200
CHECKED	PMH	
DRAWN	JCE/PMH	
CHECKED	KJH	
EXAMINED	ENGINEER OF BRIDGE DESIGN	
PASSED	ENGINEER OF BRIDGES AND STRUCTURES	

McDonough Associates Inc.
Engineers / Architects
130 East Randolph Street
Chicago, Illinois 60601
(312) 946-8500

SHEET NO. WW5	RTE.	SECTION	COUNTY	TOTAL SHEETS	SHEET NO.
	361	06-00214-02-BR	KANE	219	153
WW9 SHEETS	CONTRACT NO. 63073				
FED. ROAD DIST. NO. 1 ILLINOIS FED. AID PROJECT					

CONCRETE FACING DETAILS
STRUCTURE NO. 045-2038