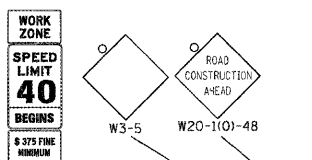
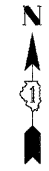


STAGE 2A

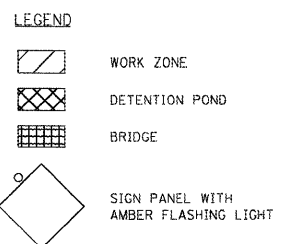
TRAFFIC:
 THROUGH TRAFFIC ON IL 25 WILL REMAIN IN THE EXISTING CONFIGURATION WITH SHIFTS ONTO TEMPORARY PAVEMENT AS NECESSARY TO ACCOMMODATE THE CONSTRUCTION. DUNHAM ROAD WILL BE CLOSED FROM STEARNS ROAD TO IL 25 REQUIRING USE OF A DETOUR. TRAFFIC WILL UTILIZE STEARNS ROAD, IL 59 (SUTTON ROAD) AND US 20 AS THE DETOUR.

CONSTRUCTION:

- ① BEGIN EAST HALF OF DUNHAM ROAD ROAD BRIDGE OVER BREWSTER CREEK (SH 045-2032)
- ② BUILD SOUTH SECTION OF MULTI-USE PATH UNDERPASS UNDER STEARNS ROAD INCLUDING THE SOUTH WING WALLS
- ③ BUILD STEARNS ROAD EAST OF DUNHAM ROAD TO STA. 150+00
- ④ BUILD THE NORTHBOUND LANES OF DUNHAM ROAD FROM STEARNS ROAD TO THE SOUTH APPROACH PAVEMENT OF THE BREWSTER CREEK BRIDGE
- ⑤ BUILD DUNHAM ROAD NORTH OF THE BREWSTER CREEK BRIDGE TO STA. 280+00
- ⑥ BUILD NORTHBOUND DUNHAM ROAD FROM STA. 280+00 TO THE NORTH END OF THE PROJECT.
- ⑦ BUILD STEARNS ROAD FROM STA. 505+00 TO THE WEST APPROACH PAVEMENT OF THE BREWSTER CREEK BRIDGE
- ⑧ BUILD TEMPORARY PAVEMENT TO CONNECT EXISTING IL 25 TO PROPOSED DUNHAM PAVEMENT COMPLETED AT STA. 280+00
- ⑨ BUILD TEMPORARY PAVEMENT TO CONNECT EXISTING IL 25 TO PROPOSED STEARNS PAVEMENT COMPLETED AT STA. 505+00
- ⑩ COMPLETE DUNHAM ROAD SOUTH OF STA 254+00 TO END OF PROJECT. UTILIZE TEMPORARY PAVEMENT TO MAINTAIN TRAFFIC.



- WORK RESTRICTIONS IN BREWSTER CREEK
1. NO IN-STREAM WORK OR WORK THAT COULD POTENTIALLY IMPACT FOX RIVER CAN OCCUR BETWEEN MARCH 1, 2010 AND JUNE 7, 2010
 2. THE TIME PERIODS FOR EACH STAGE ARE APPROXIMATE. CONTRACTOR IS REQUIRED TO SUBMIT CONSTRUCTION SCHEDULE FOR APPROVAL, IN ACCORDANCE WITH THE SPECIAL PROVISIONS.



NOTE:
 "WORKERS" SIGNS ARE TO BE DISPLAYED ONLY WHILE WORKERS ARE PRESENT.

X:\39095\3944\Engineering\documents\MOT\prp\in_abc\MOT_5sq_02A.dgn

FILE NAME = #FILES#	USER NAME = #USER#	DESIGNED - BJW	REVISED - ADDENDUM 6/5/09
		DRAWN - DMS	REVISED -
		CHECKED - JNR	REVISED -
		DATE - 3/31/09	REVISED -

KANE COUNTY
 DIVISION OF TRANSPORTATION

MAINTENANCE OF TRAFFIC
 SEQUENCE OF CONSTRUCTION
 STAGE 2A

SCALE: SHEET NO. OF SHEETS STA. TO STA.

F.A. RTE.	SECTION	COUNTY	TOTAL SHEETS	SHEET NO.
361	06-00214-15-BR	KANE/DUPAGE	545	87
FED. ROAD DIST. NO. ILLINOIS FED. AID PROJECT			CONTRACT NO. 63074	