

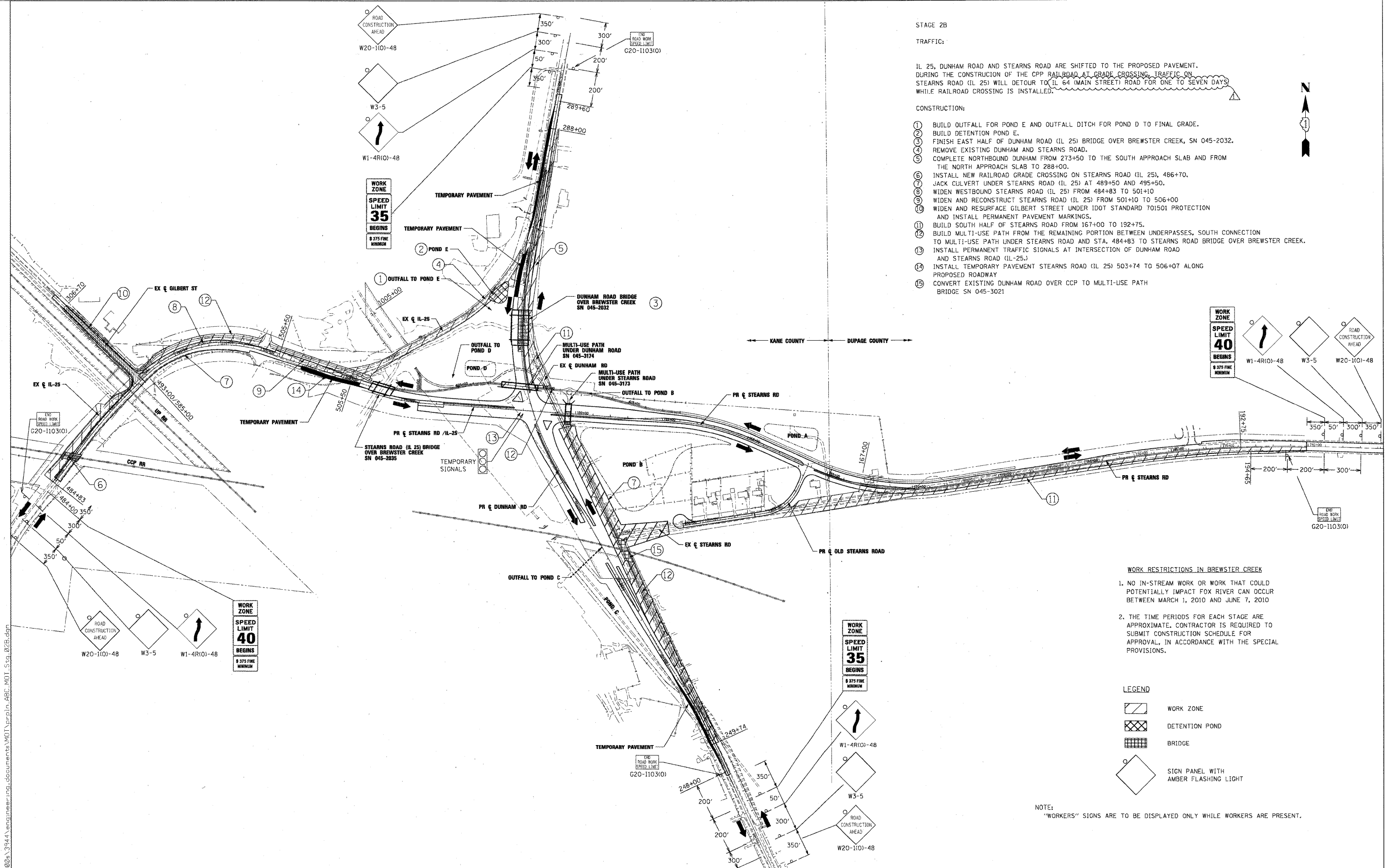
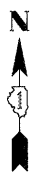
STAGE 2B

TRAFFIC:

IL 25, DUNHAM ROAD AND STEARNS ROAD ARE SHIFTED TO THE PROPOSED PAVEMENT. DURING THE CONSTRUCTION OF THE CPP RAILROAD AT GRADE CROSSING, TRAFFIC ON STEARNS ROAD (IL 25) WILL DETOUR TO IL 64 (MAIN STREET) ROAD FOR ONE TO SEVEN DAYS WHILE RAILROAD CROSSING IS INSTALLED.

CONSTRUCTION:

- 1 BUILD OUTFALL FOR POND E AND OUTFALL DITCH FOR POND D TO FINAL GRADE.
- 2 BUILD DETENTION POND E.
- 3 FINISH EAST HALF OF DUNHAM ROAD (IL 25) BRIDGE OVER BREWSTER CREEK, SN 045-2032.
- 4 REMOVE EXISTING DUNHAM AND STEARNS ROAD.
- 5 COMPLETE NORTHBOUND DUNHAM FROM 273+50 TO THE SOUTH APPROACH SLAB AND FROM THE NORTH APPROACH SLAB TO 288+00.
- 6 INSTALL NEW RAILROAD GRADE CROSSING ON STEARNS ROAD (IL 25), 486+70.
- 7 JACK CULVERT UNDER STEARNS ROAD (IL 25) AT 489+50 AND 495+50.
- 8 WIDEN WESTBOUND STEARNS ROAD (IL 25) FROM 484+83 TO 501+10.
- 9 WIDEN AND RECONSTRUCT STEARNS ROAD (IL 25) FROM 501+10 TO 506+00.
- 10 WIDEN AND RESURFACE GILBERT STREET UNDER IDOT STANDARD 701501 PROTECTION AND INSTALL PERMANENT PAVEMENT MARKINGS.
- 11 BUILD SOUTH HALF OF STEARNS ROAD FROM 167+00 TO 192+75.
- 12 BUILD MULTI-USE PATH FROM THE REMAINING PORTION BETWEEN UNDERPASSES, SOUTH CONNECTION TO MULTI-USE PATH UNDER STEARNS ROAD AND STA. 484+83 TO STEARNS ROAD BRIDGE OVER BREWSTER CREEK.
- 13 INSTALL PERMANENT TRAFFIC SIGNALS AT INTERSECTION OF DUNHAM ROAD AND STEARNS ROAD (IL-25).
- 14 INSTALL TEMPORARY PAVEMENT STEARNS ROAD (IL 25) 503+74 TO 506+07 ALONG PROPOSED ROADWAY.
- 15 CONVERT EXISTING DUNHAM ROAD OVER CCP TO MULTI-USE PATH BRIDGE SN 045-3021



WORK RESTRICTIONS IN BREWSTER CREEK

1. NO IN-STREAM WORK OR WORK THAT COULD POTENTIALLY IMPACT FOX RIVER CAN OCCUR BETWEEN MARCH 1, 2010 AND JUNE 7, 2010
2. THE TIME PERIODS FOR EACH STAGE ARE APPROXIMATE. CONTRACTOR IS REQUIRED TO SUBMIT CONSTRUCTION SCHEDULE FOR APPROVAL, IN ACCORDANCE WITH THE SPECIAL PROVISIONS.

LEGEND

- WORK ZONE
- DETENTION POND
- BRIDGE
- SIGN PANEL WITH AMBER FLASHING LIGHT

NOTE: "WORKERS" SIGNS ARE TO BE DISPLAYED ONLY WHILE WORKERS ARE PRESENT.

x:\3902\3914\engineer\ins_documents\MOI\prp\in_AFC_MOT_Stage2B.dwg

FILE NAME =	USER NAME = #USER*	DESIGNED - BJW	REVISED - ADDENDUM 6/5/09
#FILES*		DRAWN - DMS	REVISED -
	PLOT SCALE = 250.00' / IN.	CHECKED - JNR	REVISED -
	PLOT DATE = 6/4/2009	DATE - 3/31/09	REVISED -

**KANE COUNTY
DIVISION OF TRANSPORTATION**

**MAINTENANCE OF TRAFFIC
SEQUENCE OF CONSTRUCTION
STAGE 2B**

SCALE: SHEET NO. OF SHEETS STA. TO STA.

F.A. RTE.	SECTION	COUNTY	TOTAL SHEETS	SHEET NO.
361	06-00214-15-BR	KANE/DUPAGE	545	88
CONTRACT NO. 63074				
FED. ROAD DIST. NO. ILLINOIS FED. AID PROJECT				