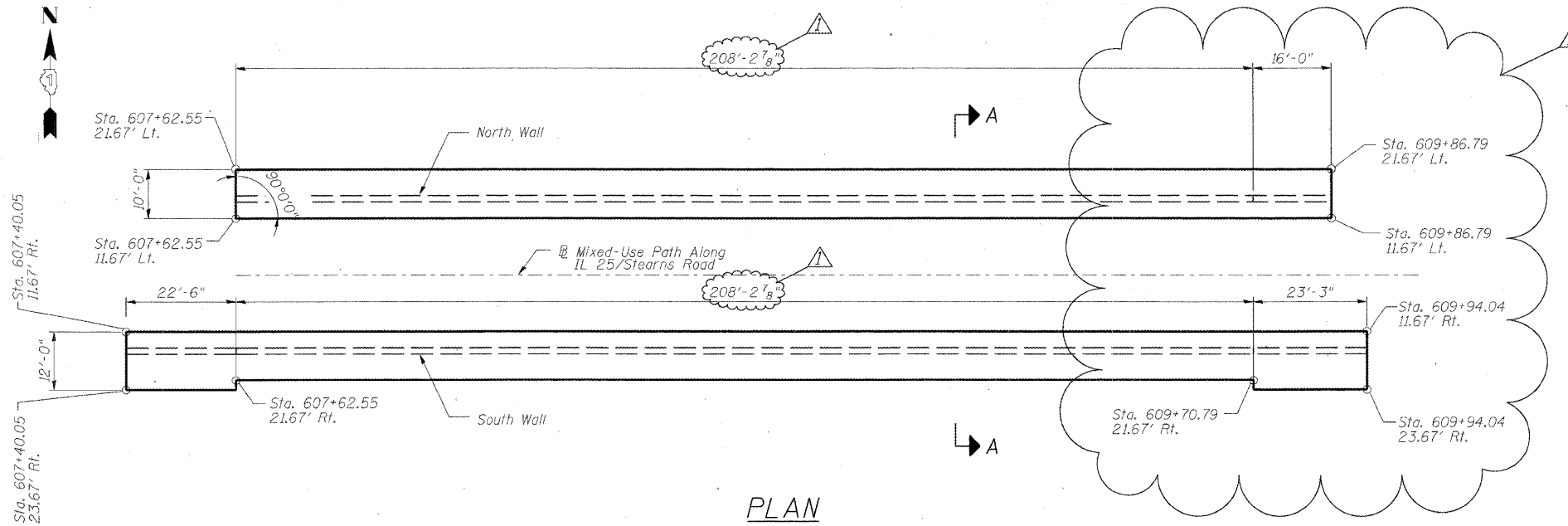


STATE OF ILLINOIS  
DEPARTMENT OF TRANSPORTATION

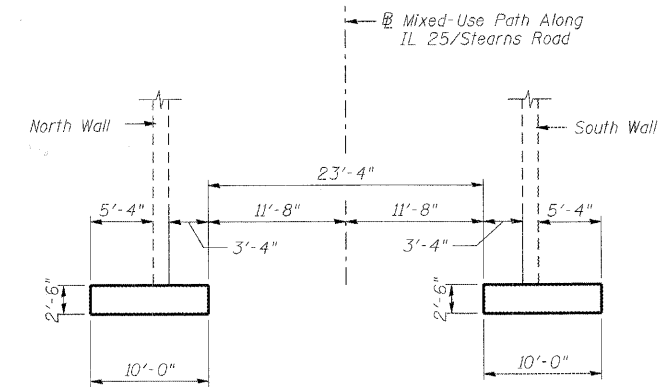
ROUTE NO.	SECTION	COUNTY	TOTAL SHEETS	SHEET NO.
		KANE	545	304
FED. ROAD DIST. NO. 7		RAILINGS	FED. AID PROJECT	

SHEET SB- 3  
OF 14 SHEETS

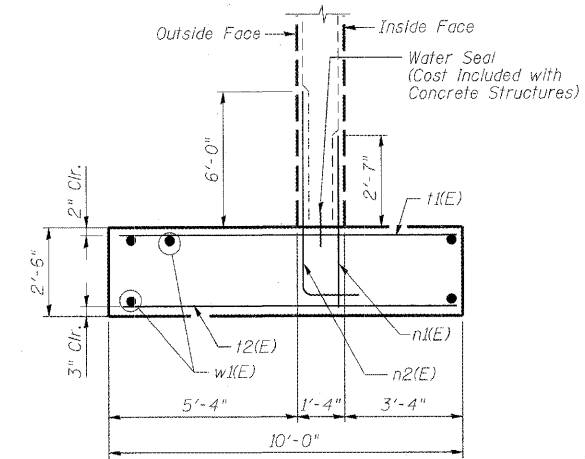
Contract # 63074



PLAN



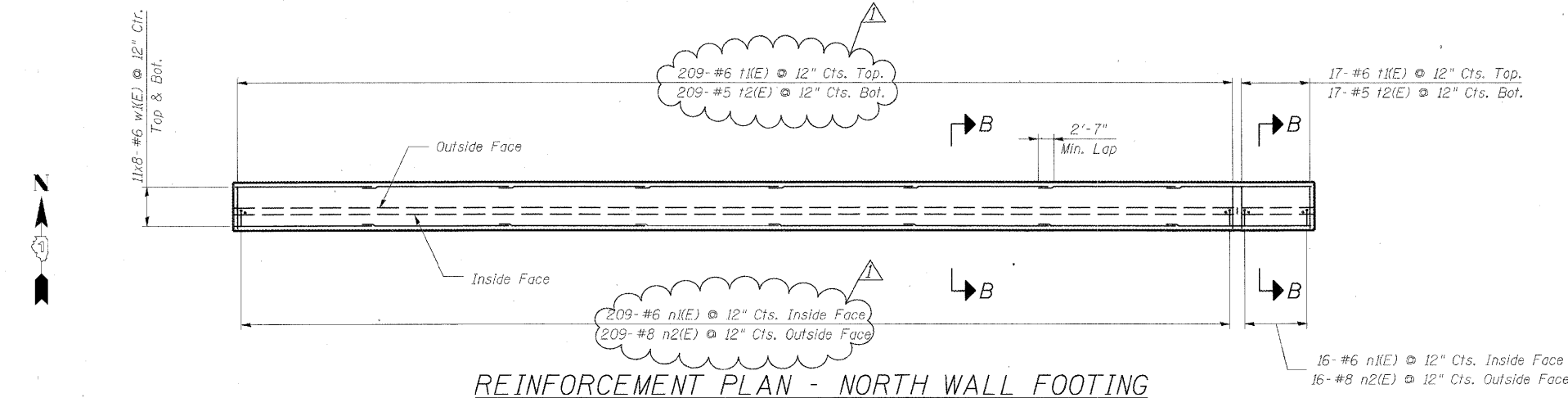
SECTION A-A



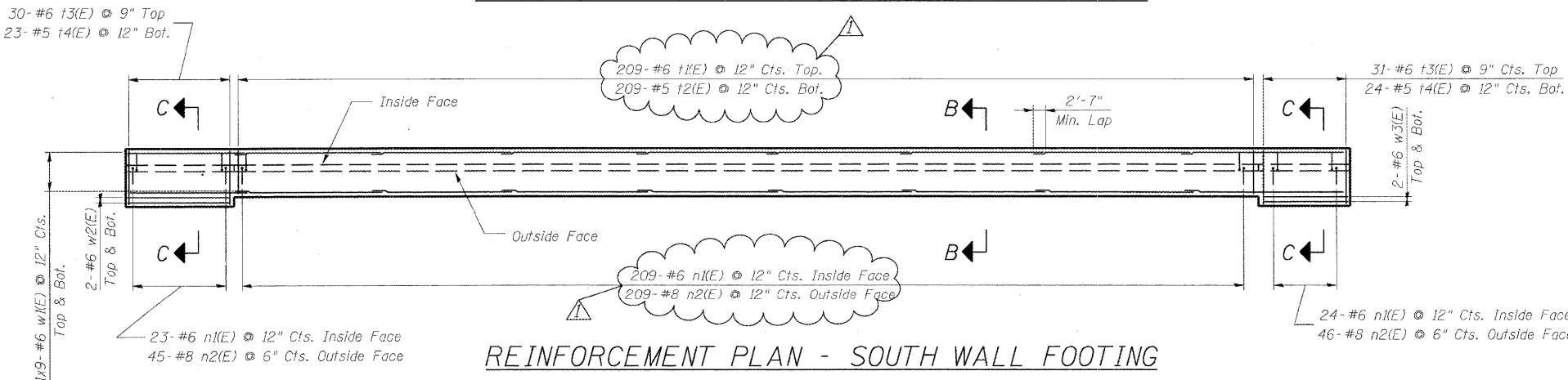
SECTION B-B

BILL OF MATERIAL

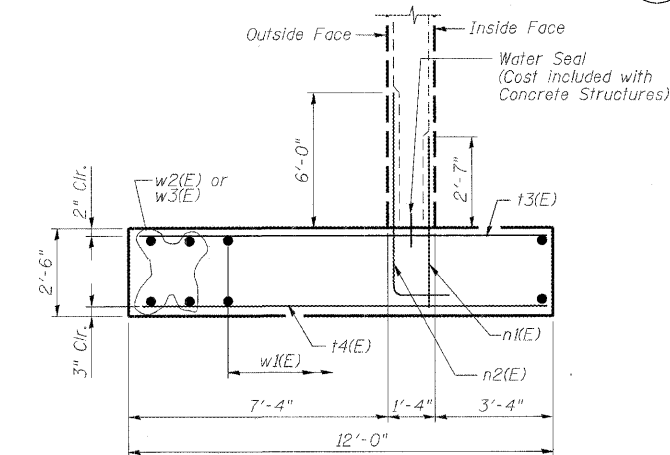
Bar	No.	Size	Length	Shape
n1(E)	481	#6	4'-10"	—
n2(E)	525	#8	9'-7"	—
t1(E)	435	#6	9'-8"	—
t2(E)	435	#5	9'-8"	—
t3(E)	61	#6	11'-8"	—
t4(E)	47	#5	11'-8"	—
w1(E)	374	#6	30'-9"	—
w2(E)	4	#6	22'-2"	—
w3(E)	4	#6	22'-11"	—
Concrete Structures			Cu. Yd.	451.3
Reinforcement Bars, Epoxy Coated			Pound	46,820



REINFORCEMENT PLAN - NORTH WALL FOOTING



REINFORCEMENT PLAN - SOUTH WALL FOOTING



SECTION C-C

BAR n2(E)

NOTES:

1. Stations and offsets are measured with respect to Mixed-Use Path along IL 25/ Stearns Road.
2. Bars indicated thus 13x8-#6 etc. indicates 13 lines of bars with 8 lengths per line.
3. Maximum Applied Bearing Pressure is 3000 psf.
4. 1" Conduit through footing at east end. See Lighting Plans.

DESIGNED	AAY
CHECKED	AJK
DRAWN	VH
CHECKED	HMA/DMC

Addendum #1 - 6/5/09

**benesch**  
alfred benesch & company  
Engineers • Surveyors • Planners  
205 North Michigan Avenue, Suite 2400  
Chicago, Illinois 60601  
312-685-0450  
Job # 3944

FOUNDATION PLAN AND REINFORCEMENT

MIXED-USE PATH UNDER

IL 25/DUNHAM ROAD

F.A.P. 360 - SEC. 06-00214-15-BR

KANE COUNTY

STATION 609+05.92

STRUCTURE NO. 045-3174

x:\3900s\3944\engineer\ing\_documents\N.L.25-Stearns\_Path\_under\_IL25-SN045-3174\Final\0453174-63074-003-fndp.dgn 1:45:09 PM 6/3/2009