

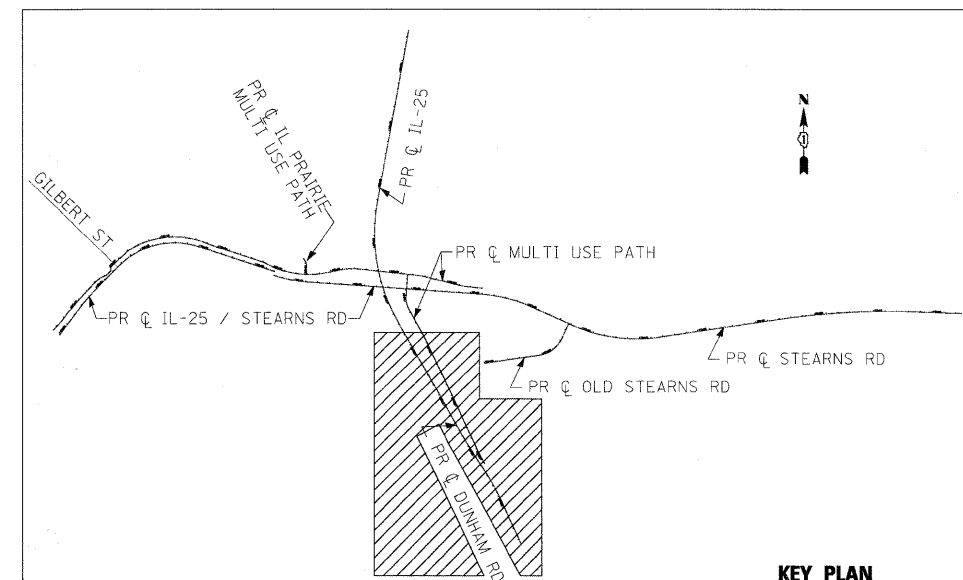
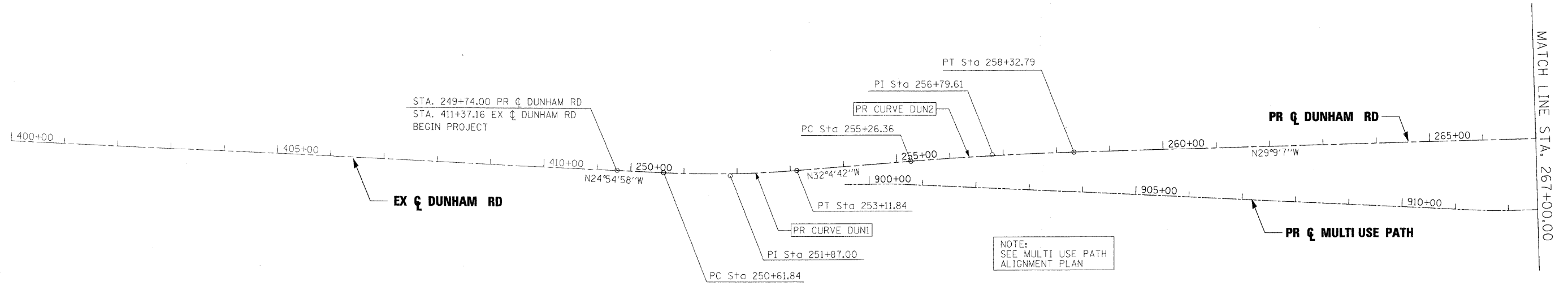
PR CURVE DUN1

PI STA. = 251+87.00
 $\Delta = 7^\circ 09' 43''$ (LT)
 $D = 2^\circ 51' 53''$
 $R = 2,000.00'$
 $T = 125.16'$
 $L = 250.00'$
 $E = 3.91'$
 $e = 2.90\%$
 $T.R. = 44.40'$
 $S.E. RUN = 64.38$
 $P.C. STA = 250+61.84$
 $P.T. STA = 253+11.84$

PR CURVE DUN2

PI STA. = 256+79.61
 $\Delta = 2^\circ 55' 34''$ (RT)
 $D = 0^\circ 57' 18''$
 $R = 6,000.00'$
 $T = 153.25'$
 $L = 306.43'$
 $E = 1.96'$
 $e = -----$
 $T.R. = -----$
 $S.E. RUN = -----$
 $P.C. STA = 255+26.36$
 $P.T. STA = 258+32.79$

COORDINATE DATA			
STATION	NORTHING	EASTING	REMARKS
249+74.00	1932594.53	1002756.95	POT PR ϕ DUNHAM RD
251+87.00	1932787.71	1002667.21	PI PR CURVE DUN1
250+61.84	1932674.19	1002719.94	PC PR CURVE DUN1
253+11.84	1932893.76	1002600.74	PT PR CURVE DUN1
256+79.61	1933205.38	1002405.43	PI PR CURVE DUN2
255+26.36	1933075.53	1002486.81	PC PR CURVE DUN2
258+32.79	1933339.22	1002330.78	PT PR CURVE DUN2



x:\2009\3944\eng\neer\ng_documents\alignments\roadway\alignments\pr\pr-ABC-DUN-ali-01.dgn

FILE NAME =	USER NAME = #USER#	DESIGNED - JRM	REVISED -	KANE COUNTY DIVISION OF TRANSPORTATION	ALIGNMENT PLAN DUNHAM ROAD	F.A. RTE.	SECTION	COUNTY	TOTAL SHEETS	SHEET NO.	
#FILES#		DRAWN - NMM	REVISED -			361	06-00214-15-BR	KANE/DUPAGE	545	48	
PLOT SCALE = 100.0000' / IN.		CHECKED - JNR	REVISED -			CONTRACT NO. 63074					
PLOT DATE = 3/30/2009		DATE = 3/31/09	REVISED -			FED. ROAD DIST. NO. ILLINOIS FED. AID PROJECT					