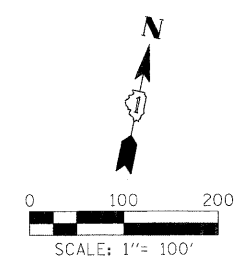


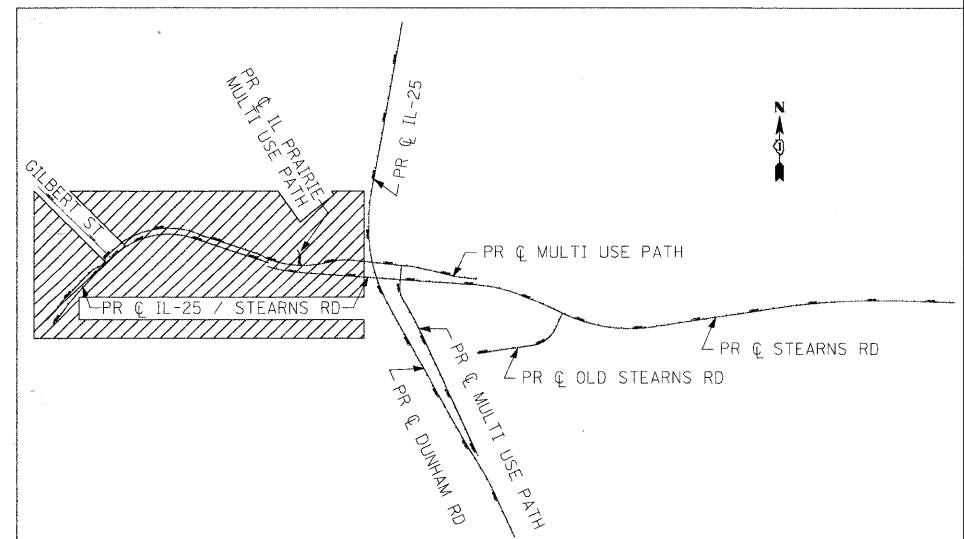
PR CURVE STN1	PR CURVE STN2	PR CURVE STN3
PI STA. = 489+45.88	PI STA. = 496+74.90	PI STA. = 139+80.56
$\Delta = 7^\circ 32' 03''$ (RT)	$\Delta = 63^\circ 23' 16''$ (RT)	$\Delta = 13^\circ 58' 39''$ (LT)
D = 1° 58' 33"	D = 8° 36' 57"	D = 4° 20' 02"
R = 2,900.00'	R = 665.00'	R = 1,322.00'
T = 190.94'	T = 410.61'	T = 162.06'
L = 381.33'	L = 735.71'	L = 322.51'
E = 6.28'	E = 116.56'	E = 9.90'
e = -----	e = 6.00%	e = 3.50%
T.R. = -----	T.R. = 66.60'	T.R. = 66.60'
S.E. RUN = -----	S.E. RUN = 199.80'	S.E. RUN = 116.55'
P.C. STA = 487+54.94	P.C. STA = 492+64.29	P.C. STA = 138+18.50
P.T. STA = 491+36.27	P.T. STA = 500+00.00	P.T. STA = 141+41.01



STA. 485+09.91 PR  $\oslash$  IL-25 / STEARNS RD  
 STA. 36+26.56 PR  $\oslash$  IL-25 STAGE 4  
 STA. 1207+54.00 EX  $\oslash$  IL-25  
 BEGIN PROJECT

NOTE:  
 SEE MULTI USE PATH  
 ALIGNMENT PLAN

COORDINATE DATA			
STATION	NORTHING	EASTING	REMARKS
485+09.91	1934113.08	998992.22	POT PR $\oslash$ IL-25/STEARNS RD
489+45.88	1934460.51	999255.58	PI PR CURVE STN1
487+54.94	1934308.35	999140.24	PC PR CURVE STN1
491+36.27	1934596.24	999389.89	PT PR CURVE STN1
492+51.91	1934678.44	999471.22	PR $\oslash$ IL-25/STEARNS RD = $\oslash$ GILBERT
496+74.90	1934979.11	999768.75	PI PR CURVE STN2
492+64.29	1934687.24	999479.93	PC PR CURVE STN2
500+00.00	1934851.64	1000159.07	PT PR CURVE STN2
506+76.88	1934641.51	1000802.51	POT PR $\oslash$ IL-25/STEARNS RD
139+80.56	1934559.83	1000946.32	PI PR CURVE STN3
138+18.50	1934610.14	1000792.27	PC PR CURVE STN3
141+41.01	1934548.22	1001107.97	PT PR CURVE STN3
305+80.00	1935165.77	998970.77	EX $\oslash$ GILBERT ST
312+78.53	1934678.44	999471.22	EX $\oslash$ GILBERT ST = PR $\oslash$ IL-25/STEARNS RD



KEY PLAN

x:\3000s\3944\engineer\document\3944\align\plan\ABC-STN.e1.dgn

FILE NAME =	USER NAME = #USER#	DESIGNED - JRM	REVISED -	<b>KANE COUNTY DIVISION OF TRANSPORTATION</b>	<b>ALIGNMENT PLAN IL 25 / STEARNS ROAD</b>	F.A. RTE.	SECTION	COUNTY	TOTAL SHEET NO.	
#FILES#	PLOT SCALE = 100.0000' / IN.	DRAWN - NMM	REVISED -			361	06-00214-15-BR	KANE/DUPAGE	545	50
	PLOT DATE = 3/30/2009	CHECKED - JNR	REVISED -			CONTRACT NO. 63074				
		DATE - 3/31/09	REVISED -			FED. ROAD DIST. NO. ILLINOIS FED. AID PROJECT				
SCALE:		SHEET NO. OF SHEETS		STA. 485+09.91 TO STA. 145+00.00						