

NOTE:
 SEE DUNHAM RD & IL-25
 ALIGNMENT PLAN
 SEE IL-25/STEARNS RD & STEARNS RD
 ALIGNMENT PLAN
 SEE CURVE DATA

PR CURVE DATA MULTI USE PATH IL-25 / STEARNS RD

COORDINATE DATA			
STATION	NORTHING	EASTING	REMARKS
577+54.59	1934131.83	998924.01	POB MULTI USE PATH
577+98.07	1934164.87	998952.27	PI PR CURVE SMUPC18
577+95.65	1934163.03	998950.70	PC PR CURVE SMUPC18
578+00.49	1934166.63	998953.94	PT PR CURVE SMUPC18
578+71.44	1934213.60	998998.22	PI PR CURVE SMUPC17
578+65.05	1934687.24	999479.93	PC PR CURVE SMUPC17
578+77.82	1934223.42	999006.37	PT PR CURVE SMUPC17
579+55.54	1934286.30	999052.06	PI PR CURVE SMUPC16
579+51.51	1934283.04	999049.69	PC PR CURVE SMUPC16
579+59.57	1934289.36	999054.68	PT PR CURVE SMUPC16
582+48.40	1934508.59	999242.72	PI PR CURVE SMUPC7
581+59.68	1934441.26	999184.97	PC PR CURVE SMUPC7
583+37.03	1934571.51	999305.27	PT PR CURVE SMUPC7
583+56.50	1934585.32	999318.99	PI PR CURVE SMUPC15
583+37.05	1934571.52	999305.28	PC PR CURVE SMUPC15
583+75.48	1934592.97	999336.88	PT PR CURVE SMUPC15
584+20.23	1934610.56	999378.03	PI PR CURVE SMUPC14
584+00.65	1934602.86	999360.03	PC PR CURVE SMUPC14
584+39.32	1934624.47	999391.80	PT PR CURVE SMUPC14
584+71.01	1934647.01	999414.09	PI PR CURVE SMUPC13
584+60.65	1934639.64	999406.81	PC PR CURVE SMUPC13
584+80.29	1934657.36	999414.04	PT PR CURVE SMUPC13
585+02.46	1934679.52	999413.92	PI PR CURVE SMUPC12
584+92.10	1934669.17	999413.97	PC PR CURVE SMUPC12
585+11.74	1934686.89	999421.20	PT PR CURVE SMUPC12
585+40.58	1934707.39	999441.49	POT PR Q MULTI USE PATH = Q GILBERT ST
586+01.56	1934750.73	999484.38	PI PR CURVE SMUPC11
585+53.30	1934716.43	999450.43	PC PR CURVE SMUPC11
586+49.67	1934780.10	999522.67	PT PR CURVE SMUPC11
586+60.10	1934786.45	999530.95	PI PR CURVE SMUPC10
586+50.17	1934780.41	999523.07	PC PR CURVE SMUPC10
586+69.97	1934793.93	999537.49	PT PR CURVE SMUPC10
586+96.41	1934813.84	999554.89	PI PR CURVE SMUPC9
586+82.19	1934803.13	999545.53	PC PR CURVE SMUPC9
587+10.44	1934821.51	999566.87	PT PR CURVE SMUPC9

PR CURVE DATA MULTI USE PATH IL-25 / STEARNS RD

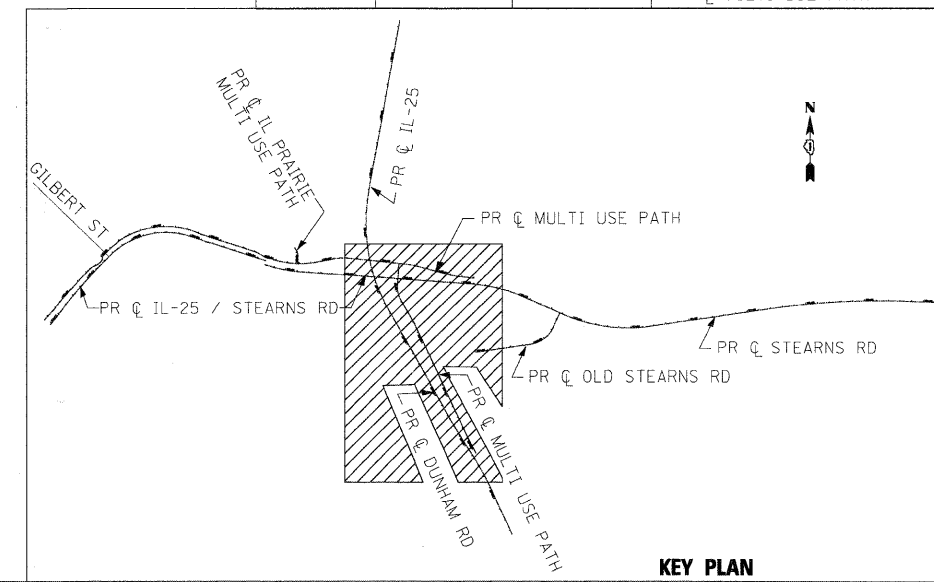
COORDINATE DATA			
STATION	NORTHING	EASTING	REMARKS
590+87.20	1935024.73	999884.11	PI PR CURVE SMUPC8
587+10.55	1934821.56	999566.96	PC PR CURVE SMUPC8
594+03.88	1934878.07	1000231.04	PT PR CURVE SMUPC8
594+32.91	1934866.76	1000257.78	PI PR CURVE SMUPC6
594+28.69	1934868.40	1000253.90	PC PR CURVE SMUPC6
594+37.12	1934865.45	1000261.79	PT PR CURVE SMUPC6
599+17.83	1934716.21	1000718.75	PI PR CURVE SMUPC5
599+08.53	1934719.10	1000709.91	PC PR CURVE SMUPC5
599+27.08	1934711.74	1000726.90	PT PR CURVE SMUPC5
600+12.18	1934670.86	1000801.54	PI PR CURVE SMUPC4
600+02.91	1934675.31	1000793.41	PC PR CURVE SMUPC4
600+21.40	1934667.97	1000810.35	PT PR CURVE SMUPC4
600+80.55	1934649.58	1000866.57	PI PR CURVE SMUPC3
600+21.40	1934667.97	1000810.35	PCC PR CURVE SMUPC3
601+39.61	1934636.52	1000924.26	PCC PR CURVE SMUPC3
602+90.00	1934617.61	1001073.22	PR Q MULTI USE PATH = PR Q IL PRAIRIE MULTI USE PATH
603+09.10	1934599.12	1001089.56	PI PR CURVE PRSMUPBL3
601+39.61	1934636.52	1000924.26	PCC PR CURVE PRSMUPBL3
604+73.41	1934633.58	1001255.51	PT PR CURVE PRSMUPBL3
606+54.86	1934670.48	1001433.17	PI PR CURVE PRSMUPBL4
605+76.93	1934654.63	1001356.86	PC PR CURVE PRSMUPBL4
607+31.54	1934662.35	1001510.67	PT PR CURVE PRSMUPBL4
611+53.93	1934618.31	1001930.76	PR Q MULTI USE PATH = PR Q MULTI USE PATH
612+65.26	1934606.70	1002041.48	PI PR CURVE SMUPC1
612+28.21	1934610.56	1002004.63	PC PR CURVE SMUPC1
613+02.17	1934597.45	1002077.36	PT PR CURVE SMUPC1
616+31.78	1934515.14	1002396.52	PI PR CURVE SMUPC2
615+98.26	1934523.51	1002364.06	PC PR CURVE SMUPC2
616+65.20	1934511.17	1002429.80	PT PR CURVE SMUPC2
618+04.51	1934494.70	1002568.14	POT PR Q MULTI USE PATH

PR CURVE DATA IL PRAIRIE MULTI USE PATH

COORDINATE DATA			
STATION	NORTHING	EASTING	REMARKS
100+00.00	1934617.61	1001073.22	PR Q IL PRAIRIE MULTI USE PATH = PR Q MULTI USE PATH
100+96.75	1934714.31	1001076.12	PI PR CURVE IPPMUPC1
100+59.91	1934677.49	1001075.02	PC PR CURVE IPPMUPC1
101+30.50	1934743.05	1001053.08	PT PR CURVE IPPMUPC1
101+41.32	1934751.49	1001046.31	PR Q IL PRAIRIE MULTI USE PATH

PR CURVE DATA MULTI USE PATH DUNHAM RD

COORDINATE DATA			
STATION	NORTHING	EASTING	REMARKS
899+54.33	1932986.17	1002582.94	PR Q MULTI USE PATH
900+38.47	1933060.08	1002542.74	PI PR CURVE PRDMUPBL1
900+01.09	1933027.46	1002560.98	PC PR CURVE PRDMUPBL1
900+75.81	1933093.98	1002526.99	PT PR CURVE PRDMUPBL1
911+72.58	1934088.64	1002064.88	PI PR CURVE PRDMUPBL2
911+35.35	1934054.88	1002080.57	PC PR CURVE PRDMUPBL2
912+09.77	1934121.14	1002046.73	PT PR CURVE PRDMUPBL2
914+85.40	1934361.79	1001912.33	PI PR CURVE PRDMUPBL3
914+18.13	1934303.06	1001945.13	PC PR CURVE PRDMUPBL3
915+48.86	1934428.88	1001917.15	PT PR CURVE PRDMUPBL3
917+38.78	1934618.31	1001930.76	PR Q MULTI USE PATH = PR Q MULTI USE PATH



KEY PLAN

x:\39026\3944\enr\user\reg_documents\roadway\alignments\pr_q\pr_q_abc_mup_al_02.dgn