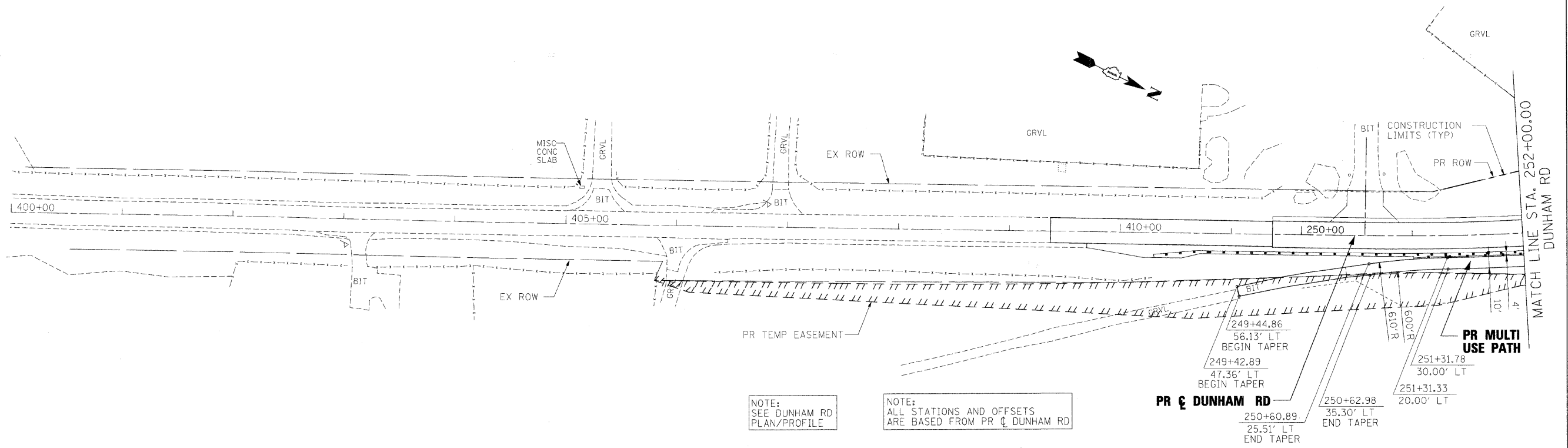


PLAN	SURVEYED	BY	DATE
	PLOTTED		
	ALIGNED		
	CHECKED		
	NO.		
	FILE NAME		

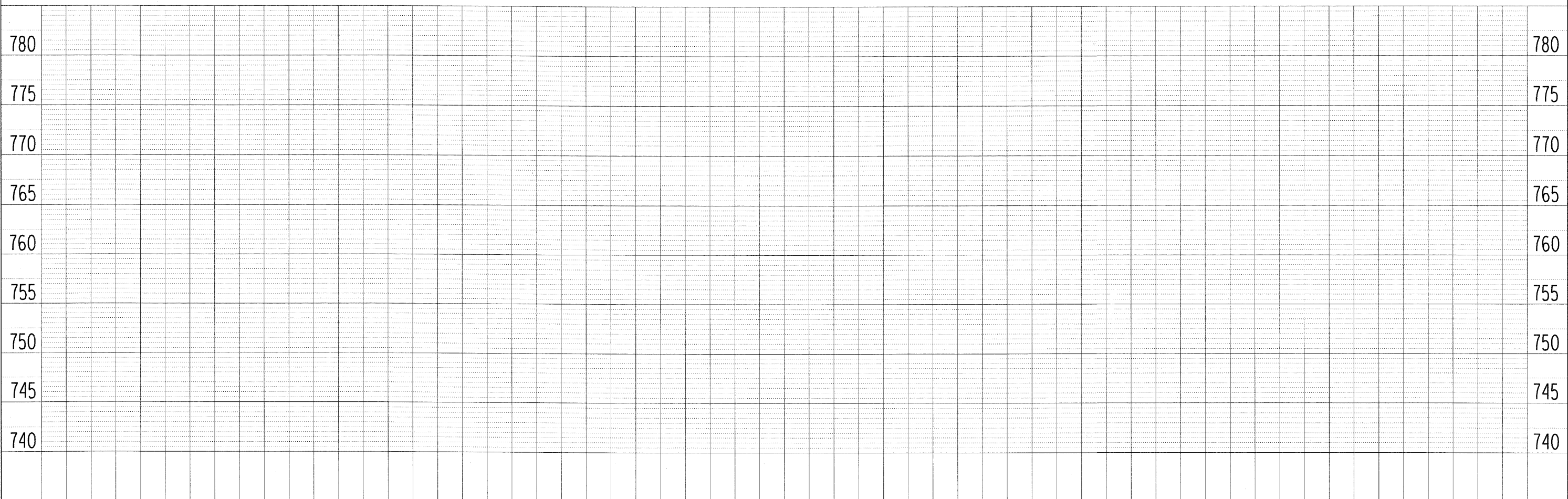
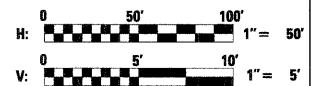
PROFILE	SURVEYED	BY	DATE
	PLOTTED		
	GRADES		
	CHECKED		
	NO.		
	FILE NAME		



NOTE:
SEE DUNHAM RD
PLAN/PROFILE

NOTE:
ALL STATIONS AND OFFSETS
ARE BASED FROM PR C DUNHAM RD

PR C DUNHAM RD
249+44.86
56.13' LT
BEGIN TAPER
249+42.89
47.36' LT
BEGIN TAPER
250+60.89
25.51' LT
END TAPER
250+62.98
35.30' LT
END TAPER
251+31.78
30.00' LT
251+31.33
20.00' LT



FILE NAME =	USER NAME = #USER#	DESIGNED - XXX	REVISED -	KANE COUNTY DIVISION OF TRANSPORTATION	MULTI USE PATH PLAN AND PROFILE DUNHAM ROAD				F.A. RTE.	SECTION	COUNTY	TOTAL SHEETS	SHEET NO.
#FILES#		DRAWN - NMM	REVISED -		361	06-00214-15-BR	KANE/DUPAGE	545	69				
PLOT SCALE = 50.0000' / IN.		CHECKED - JNR	REVISED -		CONTRACT NO. 63074								
PLOT DATE = 3/30/2009		DATE - 3/31/09	REVISED -		SCALE:	SHEET NO.	OF SHEETS	STA.	TO STA.	FED. ROAD DIST. NO.	ILLINOIS FED. AID PROJECT		