

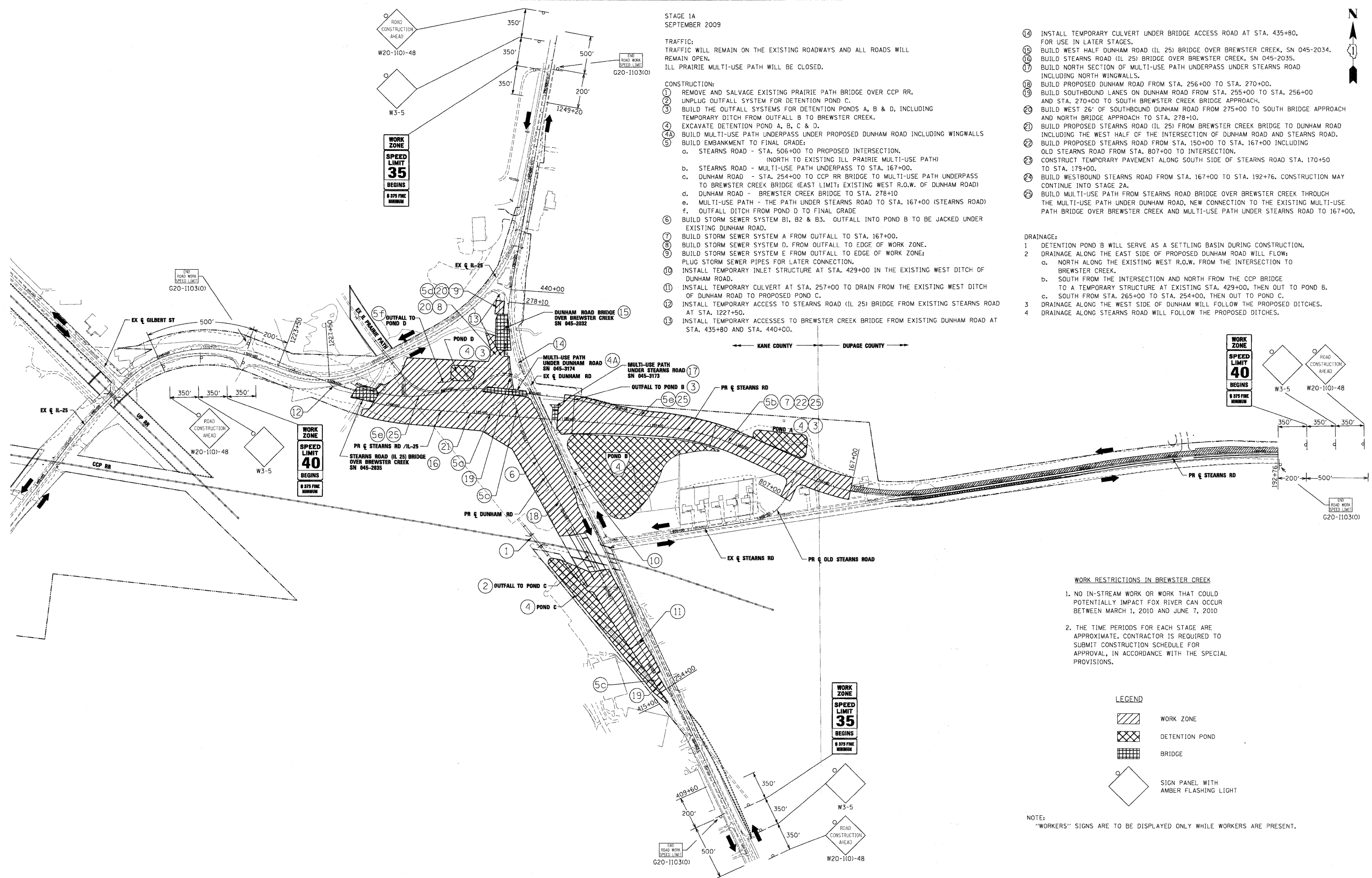
STAGE 1A
SEPTEMBER 2009

TRAFFIC:
TRAFFIC WILL REMAIN ON THE EXISTING ROADWAYS AND ALL ROADS WILL REMAIN OPEN.
ILL PRAIRIE MULTI-USE PATH WILL BE CLOSED.

- CONSTRUCTION:
- 1 REMOVE AND SALVAGE EXISTING PRAIRIE PATH BRIDGE OVER CCP RR.
 - 2 UNPLUG OUTFALL SYSTEM FOR DETENTION POND C.
 - 3 BUILD THE OUTFALL SYSTEMS FOR DETENTION PONDS A, B & D, INCLUDING TEMPORARY DITCH FROM OUTFALL B TO BREWSTER CREEK.
 - 4 EXCAVATE DETENTION POND A, B, C & D.
 - 4A BUILD MULTI-USE PATH UNDERPASS UNDER PROPOSED DUNHAM ROAD INCLUDING WINGWALLS
 - 5 BUILD EMBANKMENT TO FINAL GRADE:
 - a. STEARNS ROAD - STA. 506+00 TO PROPOSED INTERSECTION. (NORTH TO EXISTING ILL PRAIRIE MULTI-USE PATH)
 - b. STEARNS ROAD - MULTI-USE PATH UNDERPASS TO STA. 167+00.
 - c. DUNHAM ROAD - STA. 254+00 TO CCP RR BRIDGE TO MULTI-USE PATH UNDERPASS TO BREWSTER CREEK BRIDGE (EAST LIMIT; EXISTING WEST R.O.W. OF DUNHAM ROAD)
 - d. DUNHAM ROAD - BREWSTER CREEK BRIDGE TO STA. 278+10
 - e. MULTI-USE PATH - THE PATH UNDER STEARNS ROAD TO STA. 167+00 (STEARNS ROAD)
 - f. OUTFALL DITCH FROM POND D TO FINAL GRADE
 - 6 BUILD STORM SEWER SYSTEM B1, B2 & B3. OUTFALL INTO POND B TO BE JACKED UNDER EXISTING DUNHAM ROAD.
 - 7 BUILD STORM SEWER SYSTEM A FROM OUTFALL TO STA. 167+00.
 - 8 BUILD STORM SEWER SYSTEM D, FROM OUTFALL TO EDGE OF WORK ZONE.
 - 9 BUILD STORM SEWER SYSTEM E FROM OUTFALL TO EDGE OF WORK ZONE; PLUG STORM SEWER PIPES FOR LATER CONNECTION.
 - 10 INSTALL TEMPORARY INLET STRUCTURE AT STA. 429+00 IN THE EXISTING WEST DITCH OF DUNHAM ROAD.
 - 11 INSTALL TEMPORARY CULVERT AT STA. 257+00 TO DRAIN FROM THE EXISTING WEST DITCH OF DUNHAM ROAD TO PROPOSED POND C.
 - 12 INSTALL TEMPORARY ACCESS TO STEARNS ROAD (IL 25) BRIDGE FROM EXISTING STEARNS ROAD AT STA. 1227+50.
 - 13 INSTALL TEMPORARY ACCESS TO BREWSTER CREEK BRIDGE FROM EXISTING DUNHAM ROAD AT STA. 435+80 AND STA. 440+00.

- 14 INSTALL TEMPORARY CULVERT UNDER BRIDGE ACCESS ROAD AT STA. 435+80, FOR USE IN LATER STAGES.
- 15 BUILD WEST HALF DUNHAM ROAD (IL 25) BRIDGE OVER BREWSTER CREEK, SN 045-2034.
- 16 BUILD STEARNS ROAD (IL 25) BRIDGE OVER BREWSTER CREEK, SN 045-2035.
- 17 BUILD NORTH SECTION OF MULTI-USE PATH UNDERPASS UNDER STEARNS ROAD INCLUDING NORTH WINGWALLS.
- 18 BUILD PROPOSED DUNHAM ROAD FROM STA. 256+00 TO STA. 270+00.
- 19 BUILD SOUTHBOUND LANES ON DUNHAM ROAD FROM STA. 255+00 TO STA. 256+00 AND STA. 270+00 TO SOUTH BREWSTER CREEK BRIDGE APPROACH.
- 20 BUILD WEST 26' OF SOUTHBOUND DUNHAM ROAD FROM 275+00 TO SOUTH BRIDGE APPROACH AND NORTH BRIDGE APPROACH TO STA. 278+10.
- 21 BUILD PROPOSED STEARNS ROAD (IL 25) FROM BREWSTER CREEK BRIDGE TO DUNHAM ROAD INCLUDING THE WEST HALF OF THE INTERSECTION OF DUNHAM ROAD AND STEARNS ROAD.
- 22 BUILD PROPOSED STEARNS ROAD FROM STA. 150+00 TO STA. 167+00 INCLUDING OLD STEARNS ROAD FROM STA. 807+00 TO INTERSECTION.
- 23 CONSTRUCT TEMPORARY PAVEMENT ALONG SOUTH SIDE OF STEARNS ROAD STA. 170+50 TO STA. 179+00.
- 24 BUILD WESTBOUND STEARNS ROAD FROM STA. 167+00 TO STA. 192+76. CONSTRUCTION MAY CONTINUE INTO STAGE 2A.
- 25 BUILD MULTI-USE PATH FROM STEARNS ROAD BRIDGE OVER BREWSTER CREEK THROUGH THE MULTI-USE PATH UNDER DUNHAM ROAD, NEW CONNECTION TO THE EXISTING MULTI-USE PATH BRIDGE OVER BREWSTER CREEK AND MULTI-USE PATH UNDER STEARNS ROAD TO 167+00.

- DRAINAGE:
- 1 DETENTION POND B WILL SERVE AS A SETTLING BASIN DURING CONSTRUCTION.
 - 2 DRAINAGE ALONG THE EAST SIDE OF PROPOSED DUNHAM ROAD WILL FOLLOW:
 - a. NORTH ALONG THE EXISTING WEST R.O.W. FROM THE INTERSECTION TO BREWSTER CREEK.
 - b. SOUTH FROM THE INTERSECTION AND NORTH FROM THE CCP BRIDGE TO A TEMPORARY STRUCTURE AT EXISTING STA. 429+00, THEN OUT TO POND B.
 - c. SOUTH FROM STA. 265+00 TO STA. 254+00, THEN OUT TO POND C.
 - 3 DRAINAGE ALONG THE WEST SIDE OF DUNHAM WILL FOLLOW THE PROPOSED DITCHES.
 - 4 DRAINAGE ALONG STEARNS ROAD WILL FOLLOW THE PROPOSED DITCHES.



WORK RESTRICTIONS IN BREWSTER CREEK

1. NO IN-STREAM WORK OR WORK THAT COULD POTENTIALLY IMPACT FOX RIVER CAN OCCUR BETWEEN MARCH 1, 2010 AND JUNE 7, 2010
2. THE TIME PERIODS FOR EACH STAGE ARE APPROXIMATE. CONTRACTOR IS REQUIRED TO SUBMIT CONSTRUCTION SCHEDULE FOR APPROVAL, IN ACCORDANCE WITH THE SPECIAL PROVISIONS.

LEGEND

- WORK ZONE
- DETENTION POND
- BRIDGE
- SIGN PANEL WITH AMBER FLASHING LIGHT

NOTE:
"WORKERS" SIGNS ARE TO BE DISPLAYED ONLY WHILE WORKERS ARE PRESENT.

x:\32008\3944\eng\eng\eng_documents\MOT\prp\in_66C\MOT_Stage_01A.dgn

FILE NAME =	USER NAME = #USER#
#FILES#	

DESIGNED - BJW	REVISOR -
DRAWN - DMS	REVISION -
CHECKED - JNR	REVISION -
DATE - 3/31/09	REVISION -

PLOT SCALE = 250.00' / IN.
PLOT DATE = 3/30/2009

**KANE COUNTY
DIVISION OF TRANSPORTATION**

MAINTENANCE OF TRAFFIC SEQUENCE OF CONSTRUCTION STAGE 1A	
SCALE:	SHEET NO. OF SHEETS STA. TO STA.

F.A. RTE.	SECTION	COUNTY	TOTAL SHEETS	SHEET NO.
361	06-00214-15-BR	KANE/DUPAGE	545	86
CONTRACT NO. 63 74				
FED. ROAD DIST. NO. ILLINOIS FED. AID PROJECT				