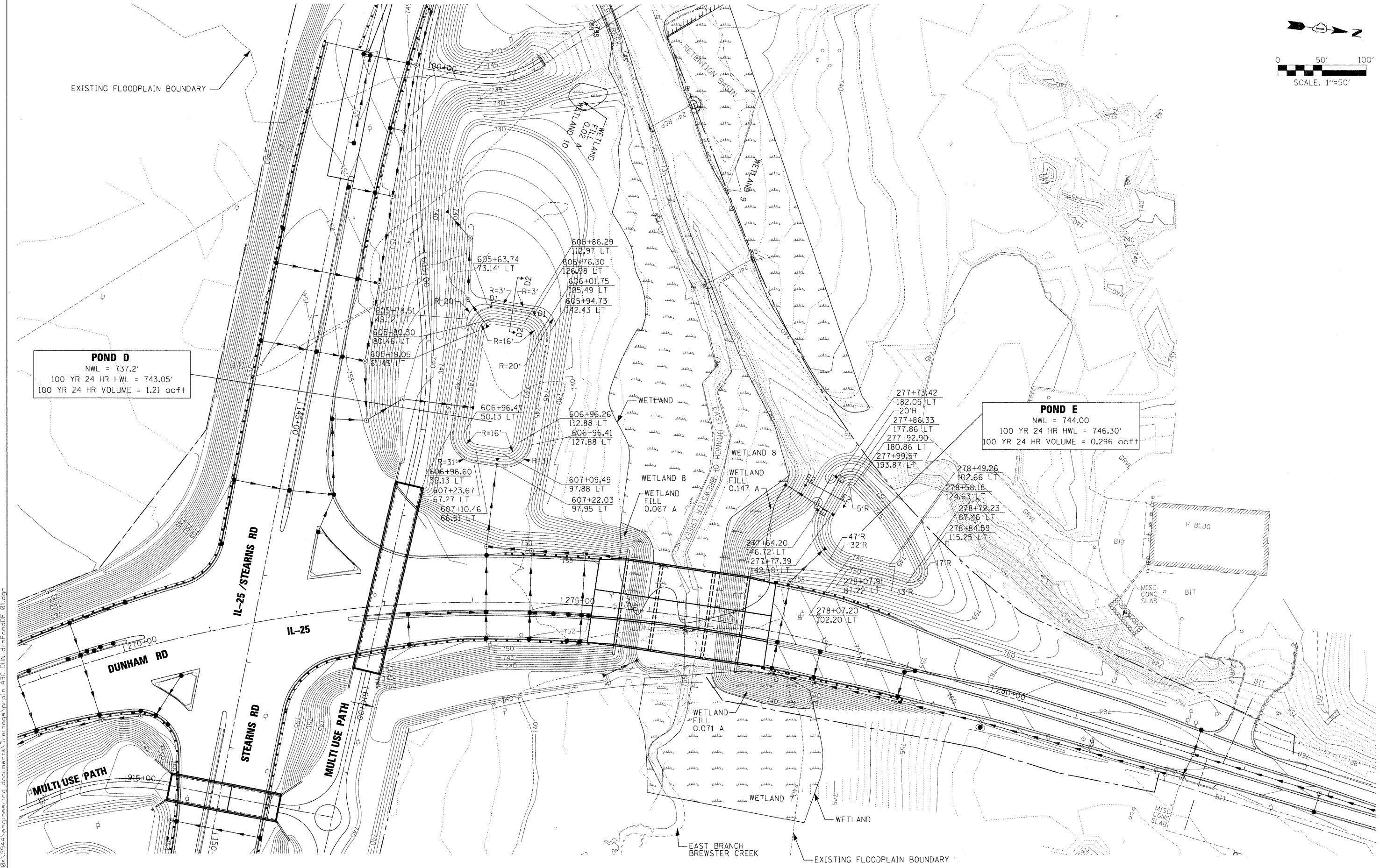


POND D
 NWL = 737.2'
 100 YR 24 HR HWL = 743.05'
 100 YR 24 HR VOLUME = 1.21 acft

POND E
 NWL = 744.00
 100 YR 24 HR HWL = 746.30'
 100 YR 24 HR VOLUME = 0.296 acft



FILE NAME =
 #FILES#

USER NAME = #USER#
 PLOT SCALE = 50.0000' / IN.
 PLOT DATE = 3/30/2009

DESIGNED - TJR
 DRAWN - AAF
 CHECKED - JNR
 DATE - 3/31/09

REVISED -
 REVISED -
 REVISED -
 REVISED -

**KANE COUNTY
 DIVISION OF TRANSPORTATION**

**DRAINAGE AND UTILITY
 DETENTION POND D /
 DETENTION POND E**

SCALE: SHEET NO. OF SHEETS STA. TO STA.

F.A. RTE.	SECTION	COUNTY	TOTAL SHEETS	SHEET NO.
361	06-00214-15-BR	KANE/DUPAGE	545	174
FED. ROAD DIST. NO.		ILLINOIS FED. AID PROJECT		CONTRACT NO. 63074

X:\2008\3944\engineer\rg_documents\Drainage\p\p\p\ABC-DUN.dwg-r\p\p\p\01.dwg