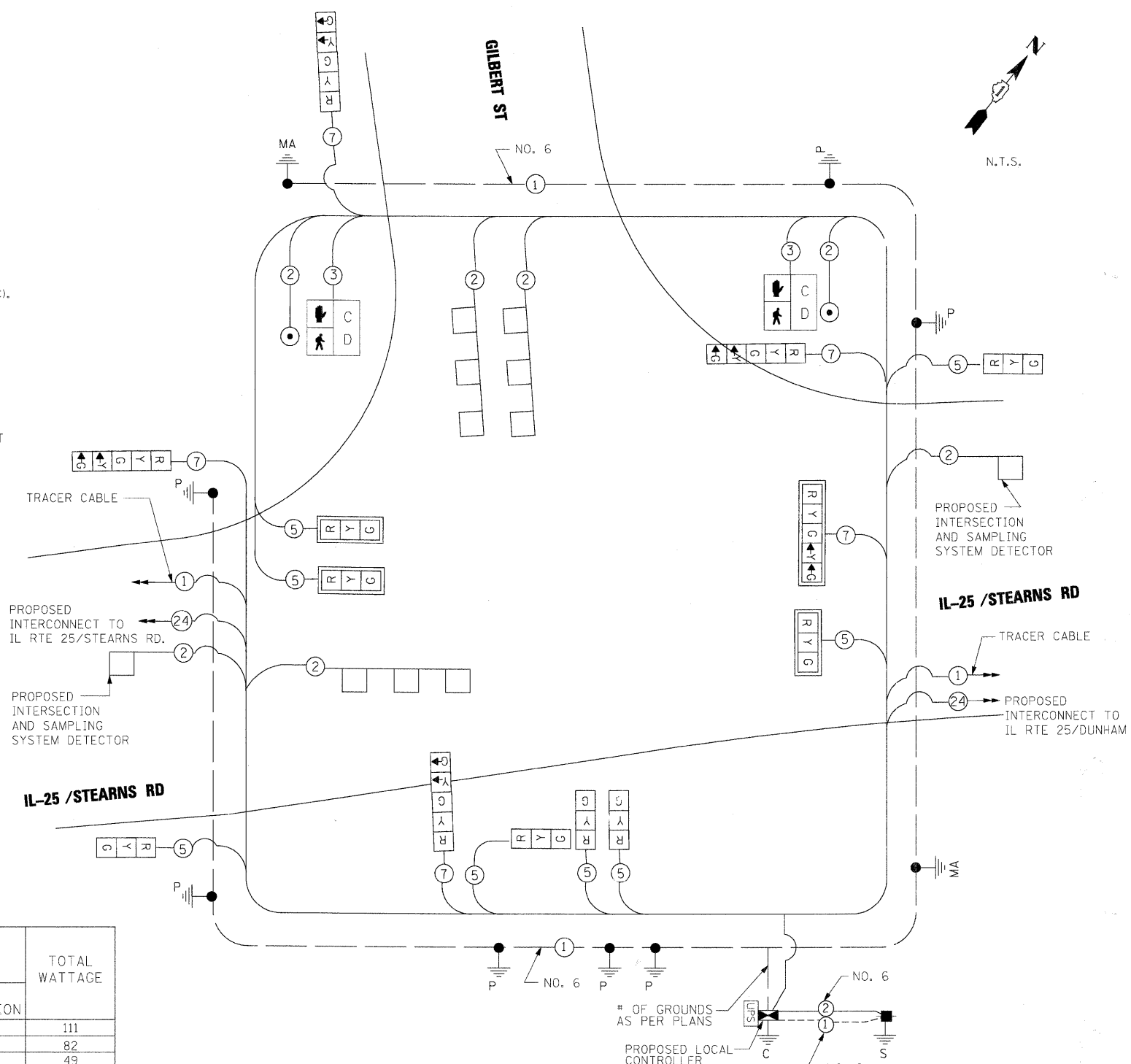


**CABLE SIGNAL LEGEND**

EXISTING	PROPOSED	DESCRIPTION
		12" (300mm) TRAFFIC SIGNAL SECTION
		CONTROLLER CABINET
		SERVICE INSTALLATION
		VEHICLE DETECTOR, INDUCTION LOOP
		DENOTES NUMBER OF CONDUCTORS, ALL CABLE NO. 14 EXCEPT AS INDICATED. ALL LOOP DETECTOR CABLE TO BE SHIELDED.
		GROUND ROD AT CONTROLLER (C).
		GROUND ROD AT POST (P), OR MAST ARM POLE (MA).
		GROUND ROD AT ELECTRIC SERVICE INSTALLATION
		GROUND CABLE IN CONDUIT NO. 6 SOLID COPPER (GREEN)
		FIBER OPTIC CABLE IN CONDUIT NO. 62.5/125 MM12F SM12F
		SIGNAL FACE WITH BACKPLATE, "P" INDICATES PROGRAMMED HEAD
		COUNTDOWN PEDESTRIAN HEAD
		UNINTERRUPTIBLE POWER SUPPLY

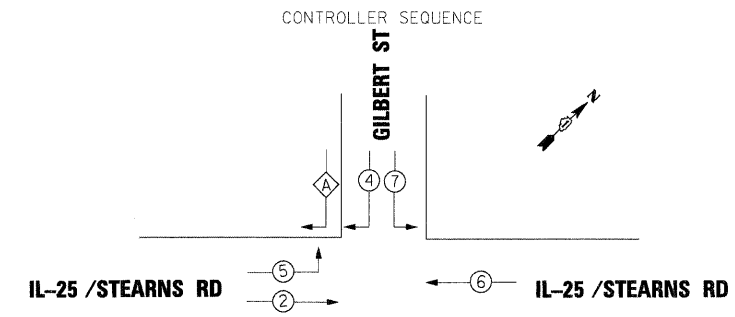
**SCHEDULE OF QUANTITIES**

ITEM	UNIT	QUANTITIES
ELECTRIC SERVICE INSTALLATION	EACH	1
CONDUIT IN TRENCH, 1 1/2" DIA., GALVANIZED STEEL	FOOT	23
CONDUIT IN TRENCH, 2" DIA., GALVANIZED STEEL	FOOT	520
CONDUIT IN TRENCH, 2 1/2" DIA., GALVANIZED STEEL	FOOT	86
CONDUIT IN TRENCH, 3" DIA., GALVANIZED STEEL	FOOT	181
CONDUIT IN TRENCH, 4" DIA., GALVANIZED STEEL	FOOT	25
CONDUIT PUSHED 3", DIA., GALVANIZED STEEL	FOOT	158
CONDUIT PUSHED 4", DIA., GALVANIZED STEEL	FOOT	76
HANDHOLE	EACH	7
HEAVY-DUTY HANDHOLE	EACH	2
DOUBLE HANDHOLE	EACH	1
TRENCH AND BACKFILL FOR ELECTRICAL WORK	FOOT	865
FULL-ACTUATED CONTROLLER AND TYPE V CABINET	EACH	1
TRANSCIVER - FIBER OPTIC	EACH	1
ELECTRIC CABLE IN CONDUIT, SIGNAL NO. 14 2/C	FOOT	409
ELECTRIC CABLE IN CONDUIT, SIGNAL NO. 14 3/C	FOOT	409
ELECTRIC CABLE IN CONDUIT, SIGNAL NO. 14 5/C	FOOT	1114
ELECTRIC CABLE IN CONDUIT, SIGNAL NO. 14 7/C	FOOT	964
ELECTRIC CABLE IN CONDUIT, LEAD-IN, NO. 14 1 PAIR	FOOT	1374
ELECTRIC CABLE IN CONDUIT, SERVICE, NO. 6 2C	FOOT	100
TRAFFIC SIGNAL POST, GALVANIZED STEEL 10 FT.	EACH	1
TRAFFIC SIGNAL POST, GALVANIZED STEEL 14 FT.	EACH	4
TRAFFIC SIGNAL POST, GALVANIZED STEEL 16 FT.	EACH	2
STEEL MAST ARM ASSEMBLY AND POLE, 36 FT.	EACH	1
STEEL MAST ARM ASSEMBLY AND POLE, 52 FT.	EACH	1
CONCRETE FOUNDATION, TYPE A	FOOT	28
CONCRETE FOUNDATION, TYPE C	FOOT	4
CONCRETE FOUNDATION, TYPE E, 30-INCH DIAMETER	FOOT	15
CONCRETE FOUNDATION, TYPE E, 36-INCH DIAMETER	FOOT	15
SIGNAL HEAD, LED, 1-FACE, 3-SECTION, MAST-ARM MOUNTED	EACH	2
SIGNAL HEAD, LED, 1-FACE, 3-SECTION, BRACKET MOUNTED	EACH	6
SIGNAL HEAD, LED, 1-FACE, 5-SECTION, BRACKET MOUNTED	EACH	3
SIGNAL HEAD, LED, 1-FACE, 5-SECTION, MAST-ARM MOUNTED	EACH	2
PEDESTRIAN SIGNAL HEAD, LED, 1-FACE, BRACKET MOUNTED WITH COUNTDOWN TIMER	EACH	2
TRAFFIC SIGNAL BACKPLATE, LOUVERED, ALUMINIUM	EACH	4
INDUCTIVE LOOP DETECTOR	EACH	5
DETECTOR LOOP, TYPE I	FOOT	354
PEDESTRIAN PUSH BUTTON	EACH	2
PREFORMED DETECTOR LOOP	FOOT	44
ELECTRIC CABLE IN CONDUIT, GROUNDING NO. 6 1C	FOOT	755
UNINTERRUPTIBLE POWER SUPPLY	EACH	1



**CABLE PLAN**

THE END OF THE TRACER CABLE WILL BE CONTINUOUS AND EXTEND INTO THE CONTROLLER CABINET



**LEGEND**

	DIAL ENTRY PHASE
	OVERLAP
	PEDESTRIAN PHASE
-	- NUMBER REFERS TO ASSOCIATED PHASE

**PHASE DESIGNATION DIAGRAM**

OVERLAP LETTER	PERMISSIVE PHASE	PROTECTED PHASE
A	4	5

**NOTES:**

- ALL DETECTOR LOOPS, TYPE I SHALL BE SAW CUT AND INSTALLED PRIOR TO THE PLACEMENT OF THE SURFACE COURSE ASPHALT.
- THE SYSTEM DETECTOR LOOP EAST OF THE INTERSECTION SHALL BE PREFORMED DETECTOR LOOPS (PLACED WITHIN THE PCC PAVEMENT) PER IDOT DISTRICT 1 SPECIAL PROVISIONS.

I.D.O.T. TRAFFIC SIGNAL INSTALLATION ELECTRICAL SERVICE REQUIREMENTS				TOTAL WATTAGE
TYPE	NO. LAMPS	WATTAGE INCAND. LED	%OPERATION	
SIGNAL (RED)	13	-	0.50	111
(YELLOW)	13	-	0.25	82
(GREEN)	13	-	0.25	49
ARROW	10	-	0.10	12
CONTROLLER	1	-	1.00	100
FLASHER				0.50
ENERGY COSTS TO:				TOTAL = 354

ILLINOIS DEPARTMENT OF TRANSPORTATION  
 201 W. CENTER COURT  
 SCHAMBURG, ILLINOIS 60196  
 ENERGY SUPPLY CONTACT: MARTY RUBIN  
 PHONE: 847-608-2400  
 COMPANY: COMED

FOUNDATION (DEPTH)	FT. (m)	CABLE SLACK	FT. (m)	VERTICAL	FT. (m)
TYPE A - POST	4 (1.2)	HANDHOLE	6.5 (2.0)	ALL FOUNDATIONS	3.5 (1.0)
D - CONTROLLER	4 (1.2)	DOUBLE HANDHOLE	13 (4.0)	MAST ARM (L) POLE	20'+L-2'
E - M. ARM POLE		SIGNAL POST	2 (1.0)		6m+L-0.6m
24" (600mm)	10 (3.0)	CONTROLLER CAB.	1 (0.5)	BRACKET MOUNTED	13 (4.0)
30" (750mm)	15 (4.6)	FIBER OPTIC	13 (4.0)	PED. PUSH BUTTON	4 (1.2)
		ELECTRIC SERVICE	1 (0.5)	ELECTRIC SERVICE	13.5 (4.1)
		GROUND CABLE	1 (0.5)	SERVICE TO GROUND	13.5 (4.1)
				POST MOUNTED	6 (1.8)

**KANE COUNTY DIVISION OF TRANSPORTATION**

**TRAFFIC SIGNAL CABLE PLAN IL. RTE. 25 / STEARNS RD. AT GILBERT ST.**

FILE NAME =	USER NAME = #USER#	DESIGNED - MPM	REVISED -	SCALE:	SHEET NO. OF SHEETS STA. TO STA.	F.A. RTE.	SECTION	COUNTY	TOTAL SHEETS	SHEET NO.
#FILES#		DRAWN - VLM	REVISED -			361	06-00214-15-BR	KANE/DUPAGE	545	261
	PLOT SCALE = 20,000' / IN.	CHECKED - GHT	REVISED -							
	PLOT DATE = 3/30/2009	DATE - 3/31/09	REVISED -							
						CONTRACT NO. 63074		FED. ROAD DIST. NO. ILLINOIS FED. AID PROJECT		