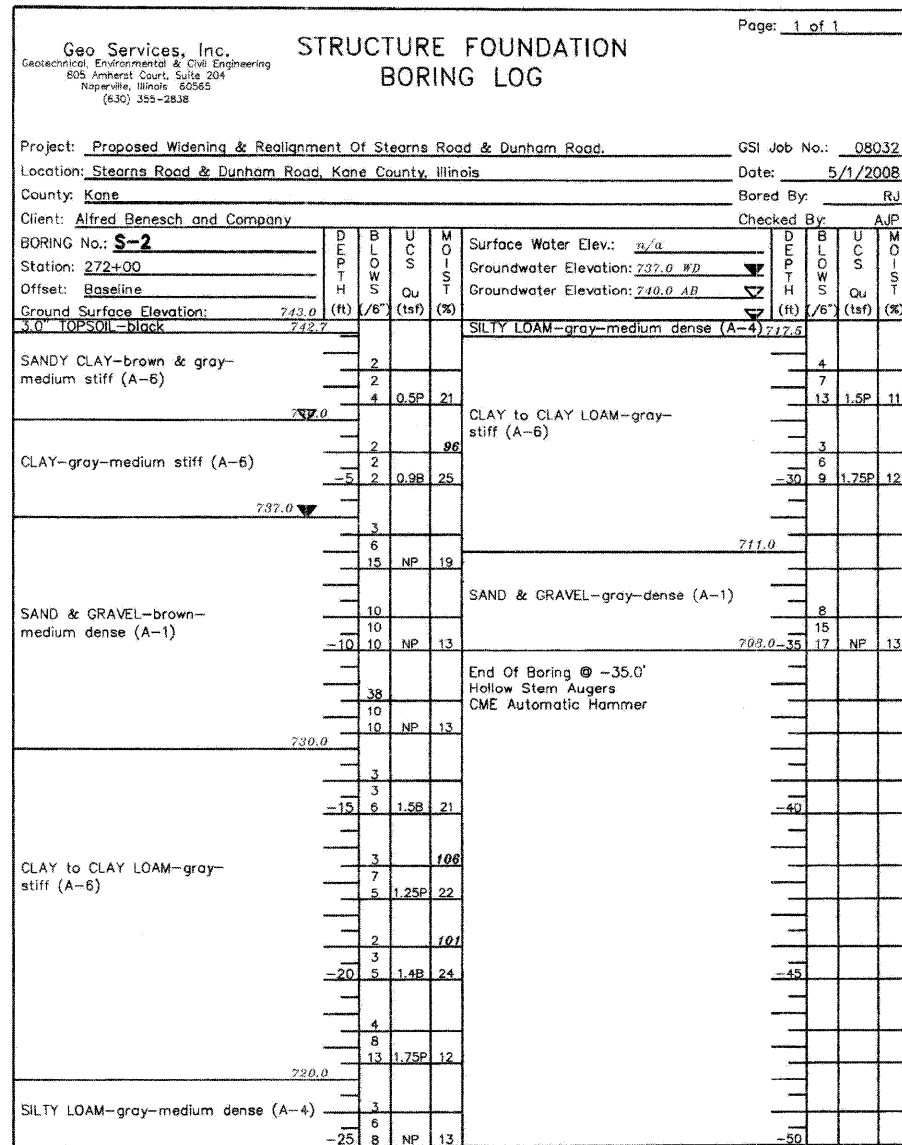
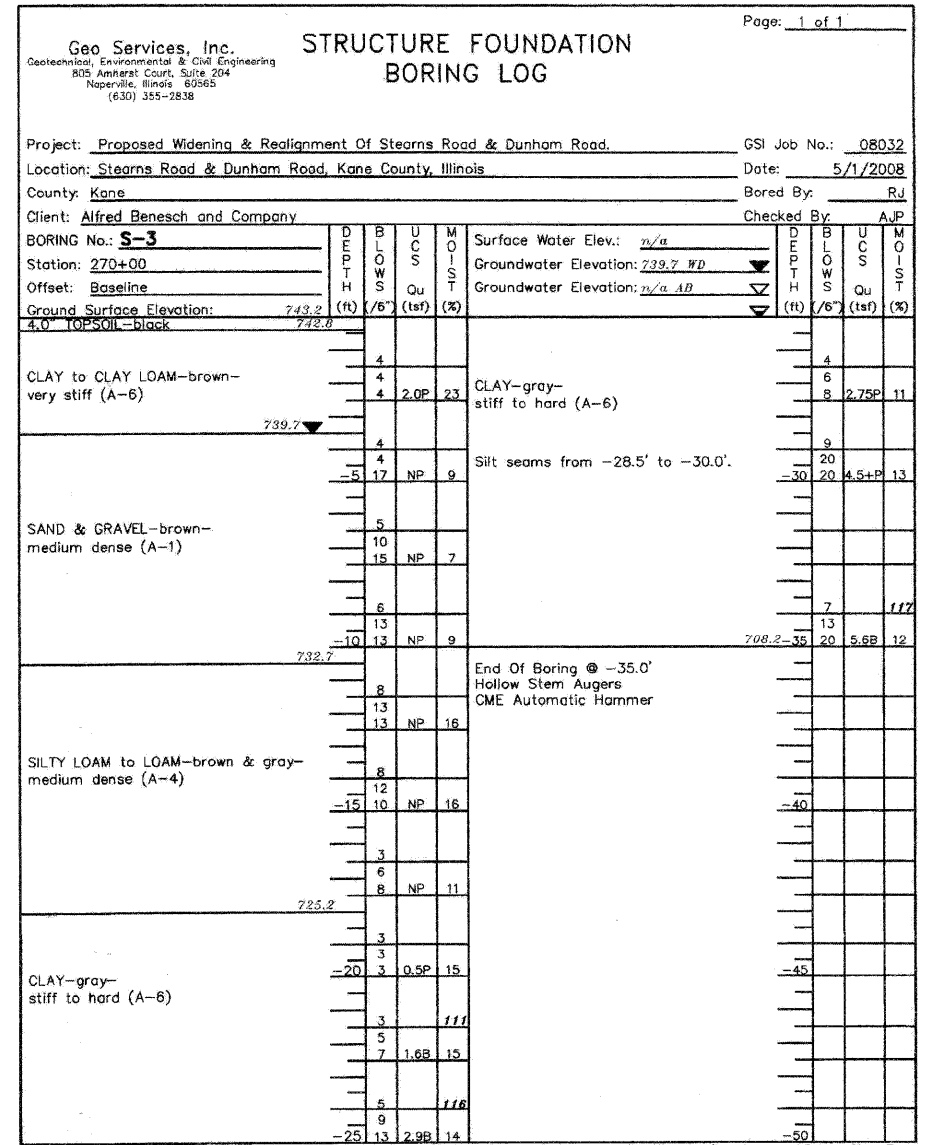


The Unconfined Compressive Strength (UCS) Failure Mode is indicated by (B-Bulge, S-Shear, P-Penetrometer) ST-Shelby Tube Sample VS-Vane Shear Test
 The SPT (N value) is the sum of the last two blow values in each sampling zone (AASHTO T206) The Unit Dry Weight (pcf) is noted in italics above moist (%)
 NR-No Recovery



The Unconfined Compressive Strength (UCS) Failure Mode is indicated by (B-Bulge, S-Shear, P-Penetrometer) ST-Shelby Tube Sample VS-Vane Shear Test
 The SPT (N value) is the sum of the last two blow values in each sampling zone (AASHTO T206) The Unit Dry Weight (pcf) is noted in italics above moist (%)
 NR-No Recovery



The Unconfined Compressive Strength (UCS) Failure Mode is indicated by (B-Bulge, S-Shear, P-Penetrometer) ST-Shelby Tube Sample VS-Vane Shear Test
 The SPT (N value) is the sum of the last two blow values in each sampling zone (AASHTO T206) The Unit Dry Weight (pcf) is noted in italics above moist (%)
 NR-No Recovery

x:\39020\3944\engineering_documents\geotechnical\geotech_ABC_SB_06.dgn

FILE NAME =	USER NAME = #USER#	DESIGNED - VLM	REVISED -	KANE COUNTY DIVISION OF TRANSPORTATION	SOIL BORING LOGS	F.A. RTE.	SECTION	COUNTY	TOTAL SHEETS	SHEET NO.	
#FILES#	PLOT SCALE = 1.0000' / IN.	DRAWN - VLM	REVISED -			361	06-00214-15-BR	KANE/DUPAGE	545	282	
	PLOT DATE = 3/30/2009	CHECKED - JRM	REVISED -			CONTRACT NO. 63074					
		DATE - 3/31/09	REVISED -			ILLINOIS FED. AID PROJECT					
				SCALE:	SHEET NO. OF SHEETS	STA. TO STA.					