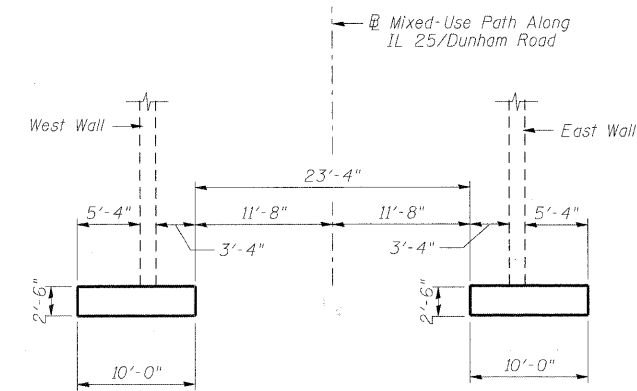
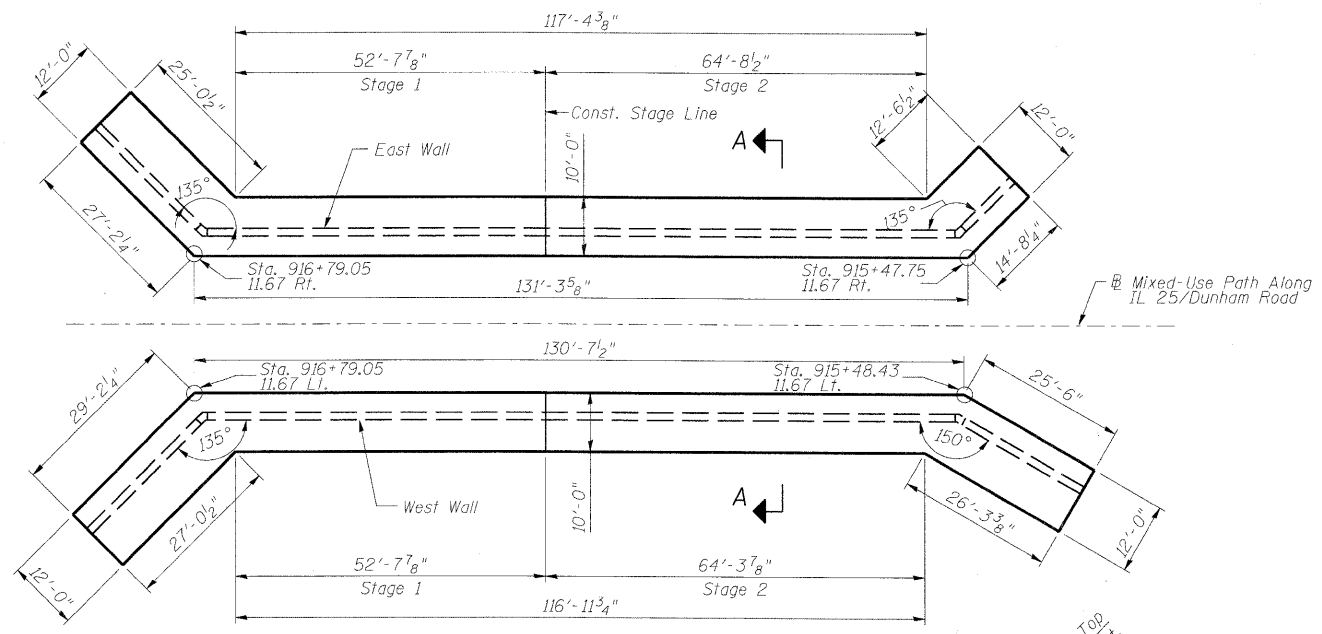


Contract #63074



SECTION A-A

**BILL OF MATERIAL**

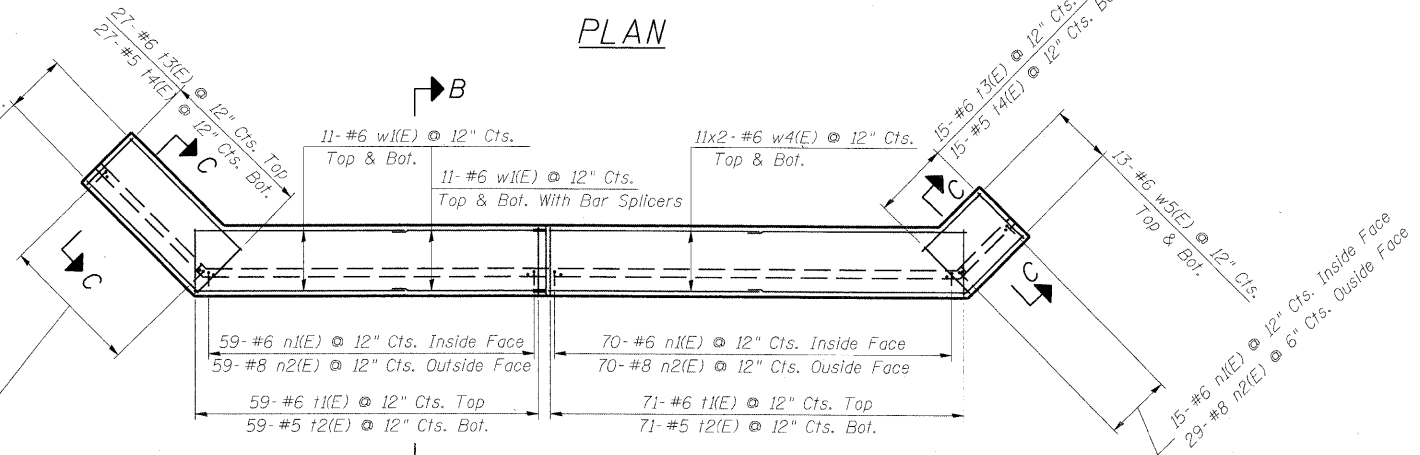
(Stage 1 Construction)

Bar	No.	Size	Length	Shape
n1(E)	173	#6	4'-10"	—
n2(E)	226	#8	9'-7"	—
t1(E)	118	#6	9'-8"	—
t2(E)	118	#5	9'-8"	—
t3(E)	55	#6	11'-8"	—
t4(E)	55	#5	11'-8"	—
w1(E)	88	#6	31'-0"	—
w2(E)	26	#6	26'-10"	—
w3(E)	26	#6	28'-11"	—
Concrete Structures	Cu. Yd.	164.3		
Reinforcement Bars, Epoxy Coated	Pound	17,850		
Bar Splicers	Each	44		

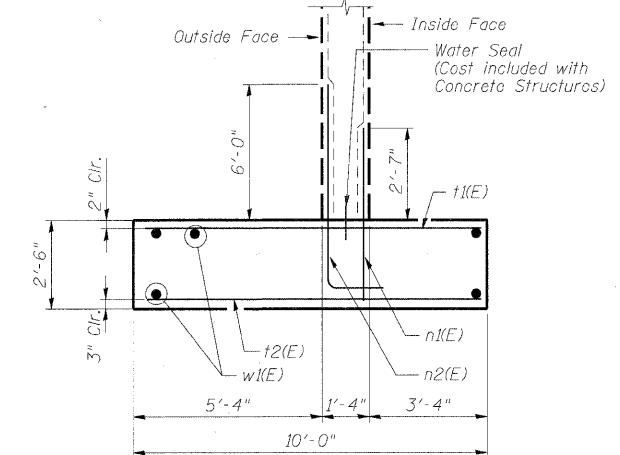
**BILL OF MATERIAL**

(Stage 2 Construction)

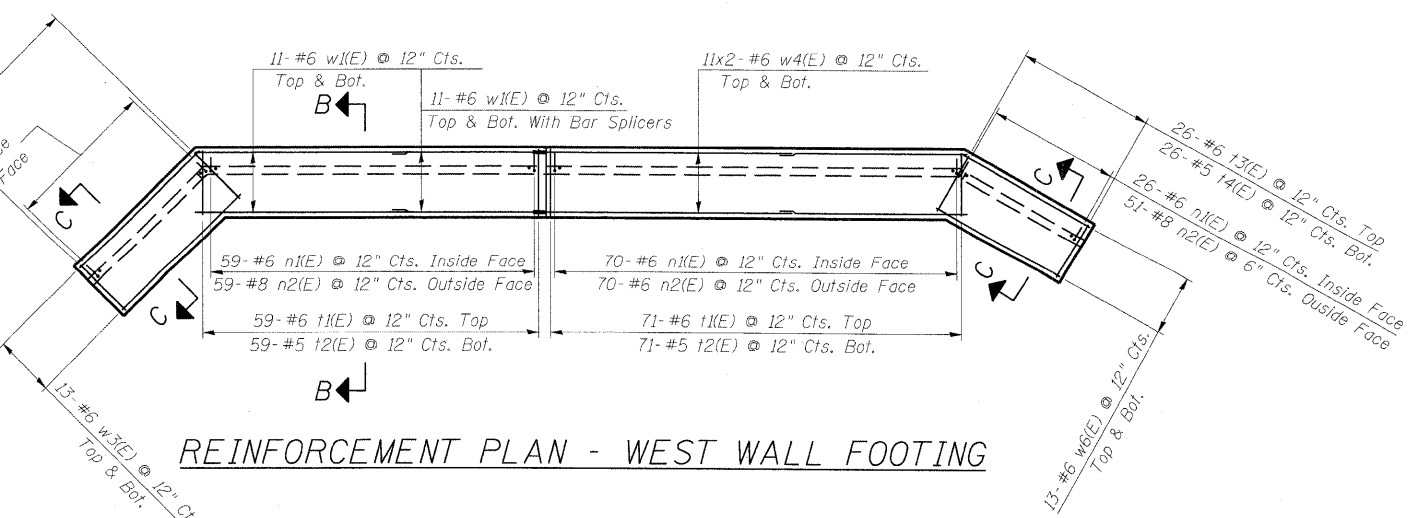
Bar	No.	Size	Length	Shape
n1(E)	181	#6	4'-10"	—
n2(E)	220	#8	9'-7"	—
t1(E)	142	#6	9'-8"	—
t2(E)	142	#5	9'-8"	—
t3(E)	41	#6	11'-8"	—
t4(E)	41	#5	11'-8"	—
w4(E)	88	#6	37'-3"	—
w5(E)	26	#6	14'-4"	—
w6(E)	26	#6	25'-2"	—
Concrete Structures	Cu. Yd.	169.7		
Reinforcement Bars, Epoxy Coated	Pound	18,130		



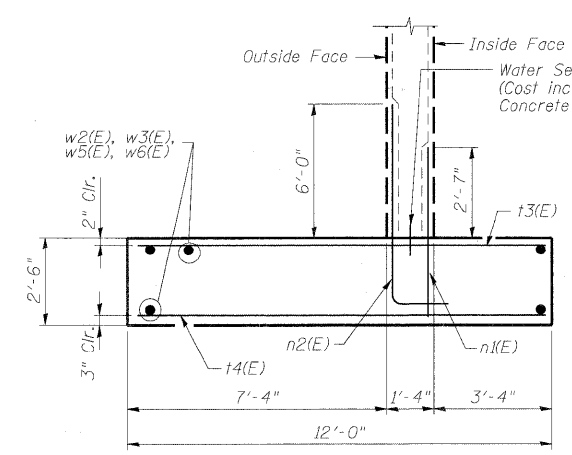
REINFORCEMENT PLAN - EAST WALL FOOTING



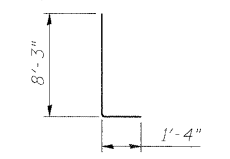
SECTION B-B



REINFORCEMENT PLAN - WEST WALL FOOTING



SECTION C-C



BAR n2(E)

- NOTES:
- Stations and offsets are measured with respect to Mixed-Use Path along IL 25/ Dunham Road
  - Bars indicated thus 13x8-#6 etc. indicates 13 lines of bars with 8 lengths per line.
  - Maximum Applied Bearing Pressure is 3000 psf.
  - 1" Conduit through footing at north end of Stage 1. See Lighting Plans.

**FOUNDATION PLAN AND REINFORCEMENT**  
**MULTI-USE PATH UNDER**  
**IL 25/STEARNS ROAD**  
**F.A.P. 360 - SEC. 06-00214-15-BR**  
**KANE COUNTY**  
**STATION 916+09.93**  
**STRUCTURE NO. 045-3173**

DESIGNED	AAV
CHECKED	AJK
DRAWN	VH
CHECKED	HMA/DMC

**benesch** alfred benesch & company  
Engineers • Surveyors • Planners  
205 North Michigan Avenue, Suite 2400  
Chicago, Illinois 60601  
312-565-0450  
Job # 3944