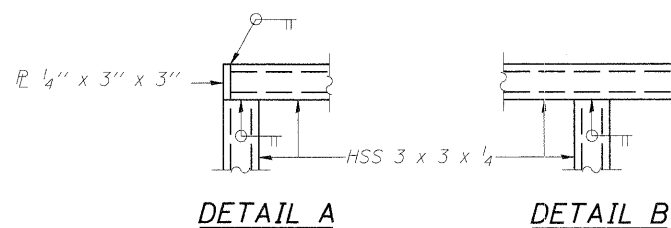
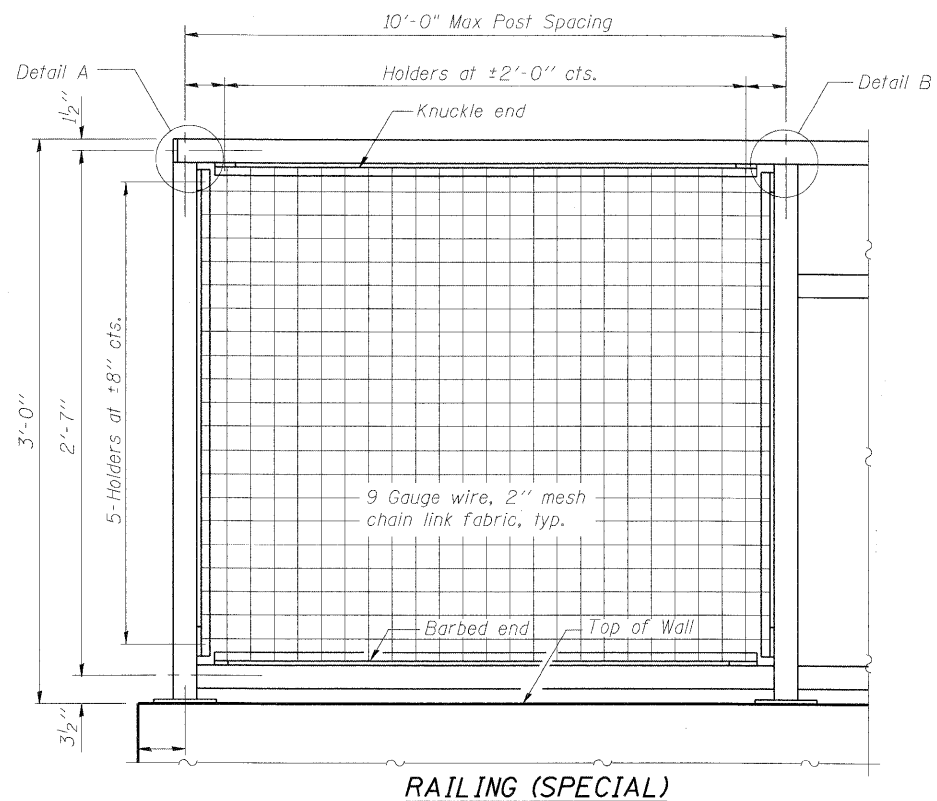


STATE OF ILLINOIS
DEPARTMENT OF TRANSPORTATION

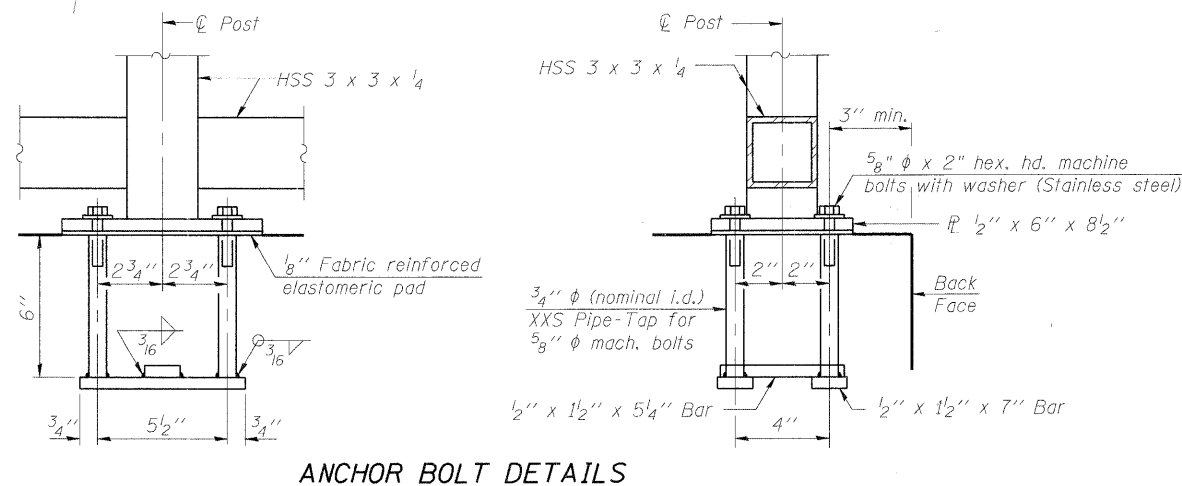
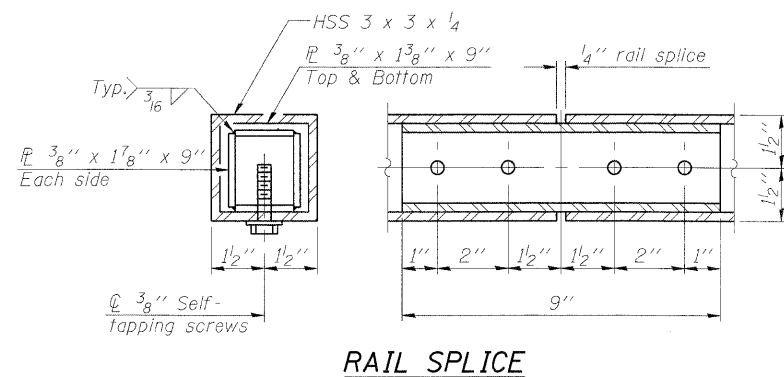
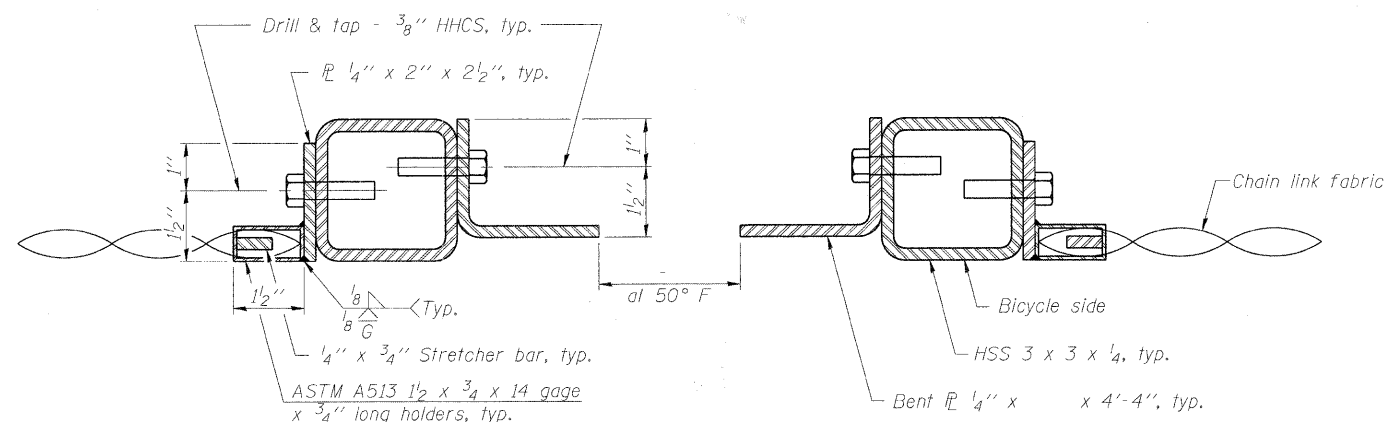
ROUTE NO.	SECTION	COUNTY	TOTAL SHEETS	SHEET NO.
-	-	KANE	545	299
FED. ROAD DIST. NO. 7	ILLINOIS	FED. AID PROJECT		

Contract #63074

SHEET SA- 12
OF 14 SHEETS



All post, railing, splices, anchor devices, and bent plates shall be painted. See Special Provisions.



In lieu of the cast-in-place anchor device shown, the Contractor has the option of drilling and setting 5/8" φ anchor rods according to Article 509.06 of the Standard Specifications. Embedment shall be according to the manufacturer's specifications.

Modify anchorage assembly or base plates as required to mount on both the headwall and wingwalls. Posts on wingwalls shall be vertical.

BILL OF MATERIAL

Item	Unit	Stage 1	Stage 2
Steel Railing (Special)	Foot	89	73

DESIGNED	AAY
CHECKED	AJK
DRAWN	VH
CHECKED	HMA/DMC

benesch
alfred benesch & company
Engineers • Surveyors • Planners
205 North Michigan Avenue, Suite 2400
Chicago, Illinois 60601
312-965-0450
Job # 3944

RAIL DETAILS
MULTI-USE PATH UNDER
IL 25/STEARNS ROAD
F.A.P. 360 - SEC. 06-00214-15-BR
KANE COUNTY
STATION 916+09.93
STRUCTURE NO. 045-3173

x:\39000s\3944\engineering_documents\Durham_Park_under_Stearns_S045-3173\Final\0453173-63074-012-rail.dgn

11:19:45 AM

3/30/2009