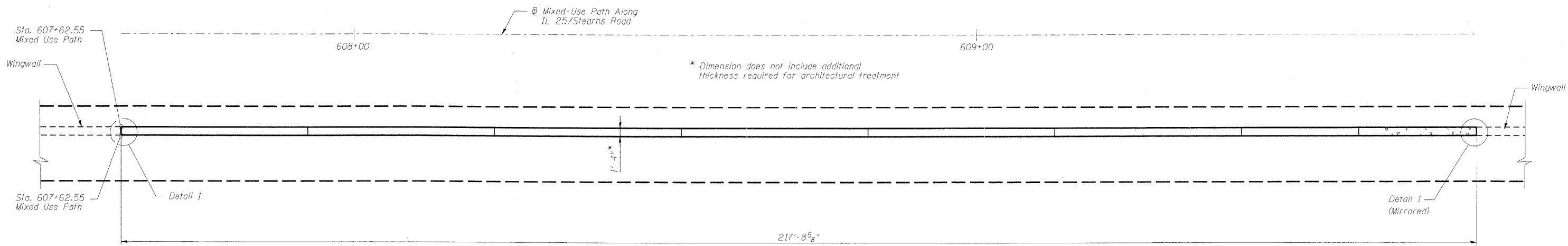


STATE OF ILLINOIS
DEPARTMENT OF TRANSPORTATION

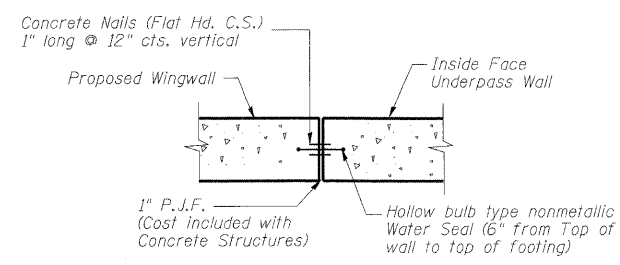
ROUTE NO.	SECTION	COUNTY	TOTAL SHEETS	SHEET NO.
-	-	KANE	545	307
FED. ROAD DIST. NO. 7		ILLINOIS	FED. AID PROJECT	

Contract # 63074

SHEET SB- 6
OF 14 SHEETS



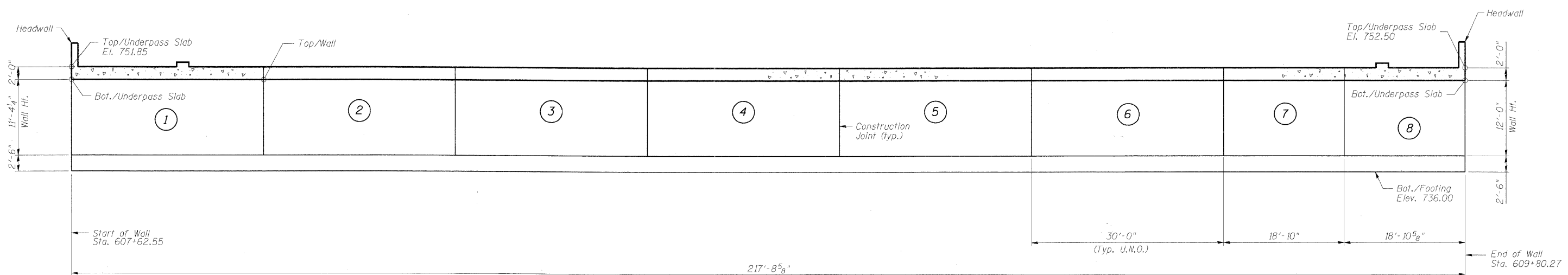
PLAN



DETAIL 1

TOP/WALL ELEVATIONS

Location Between	Station	Elevation
Start of Wall	607+62.55	749.85
Panels 1 & 2	607+92.55	749.94
Panels 2 & 3	608+22.55	750.03
Panels 3 & 4	608+52.55	750.12
Panels 4 & 5	608+82.55	750.21
Panels 5 & 6	609+12.55	750.30
Panels 6 & 7	609+42.55	750.39
Panels 7 & 8	609+61.38	750.44
End of Wall	609+80.27	750.50



ELEVATION

- NOTES:
- Stations and offsets are measured with respect to @ Mixed-Use Path along IL 25/Stearns Road
 - For wall reinforcement see sheet SB-7.
 - For Construction Joint detail see sheet SB-5.
 - U.N.O. denotes unless noted otherwise.

DESIGNED	AAY
CHECKED	AJK
DRAWN	VH
CHECKED	HMA/DMC

benesch
alfred benesch & company
Engineers • Surveyors • Planners
205 North Michigan Avenue, Suite 2400
Chicago, Illinois 60601
312-565-0450
Job # 3944

PLAN & ELEVATION SOUTH WALL
MIXED-USE PATH UNDER
IL 25/DUNHAM ROAD
F.A.P. 360 - SEC. 06-00214-15-BR
KANE COUNTY
STATION 609+05.92
STRUCTURE NO. 045-3174

x:\3900s\3944\engineering\documents\IL25-Stearns_Path_under_IL25_S1045-3174\Final\0453174-63074-006-swail.dgn 11:20:10 AM 3/30/2009