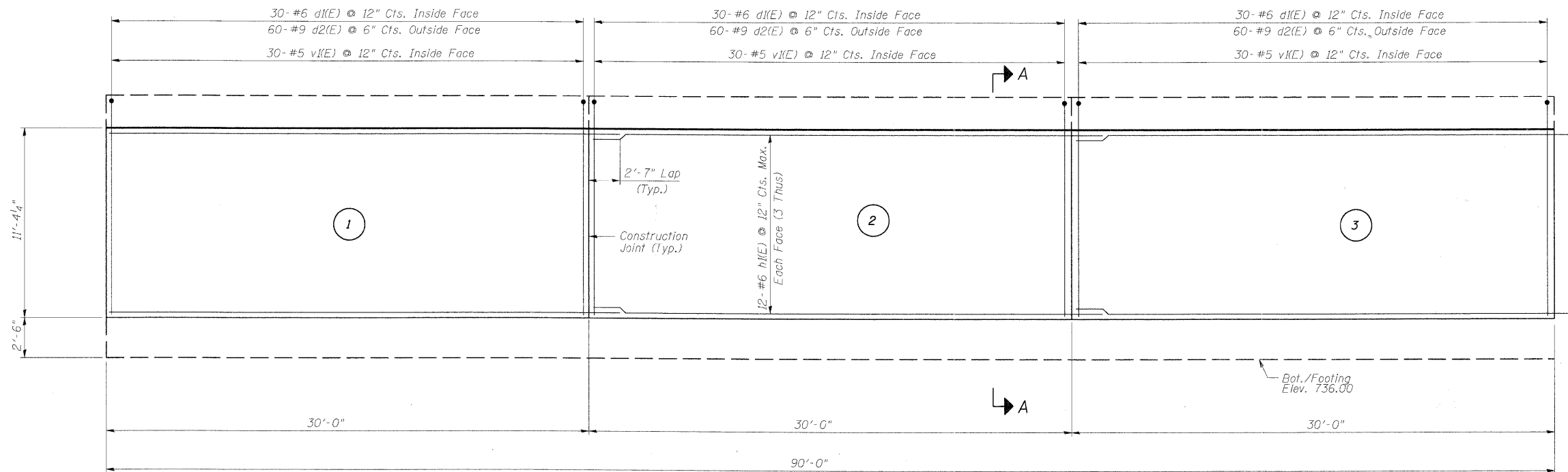


STATE OF ILLINOIS
DEPARTMENT OF TRANSPORTATION

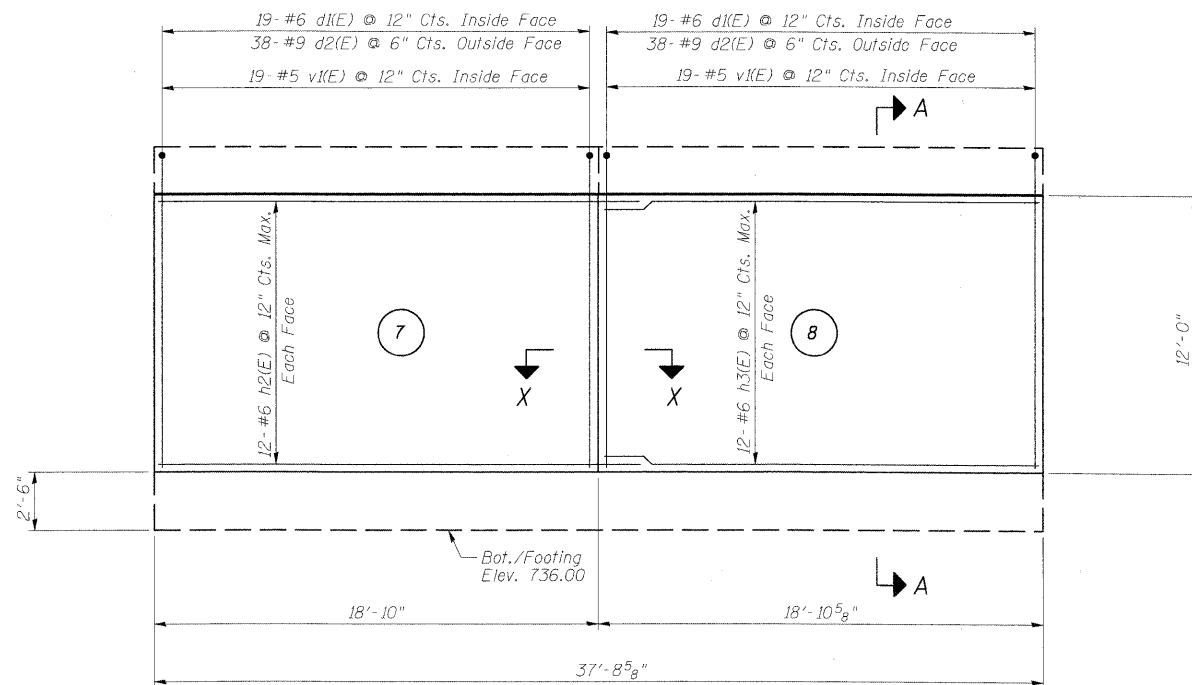
| | | | | | |
|-----------------------|----------|-------------------|--------------|-------|-----------------------------|
| ROUTE NO. | SECTION | COUNTY | TOTAL SHEETS | SHEET | SHEET SB- 7 OF 14 SHEETS |
| - | - | KANE | 545 | 328 | |
| FED. ROAD DIST. NO. / | ILLINOIS | FED. AID PROJECT- | | | |

Contract # 63074



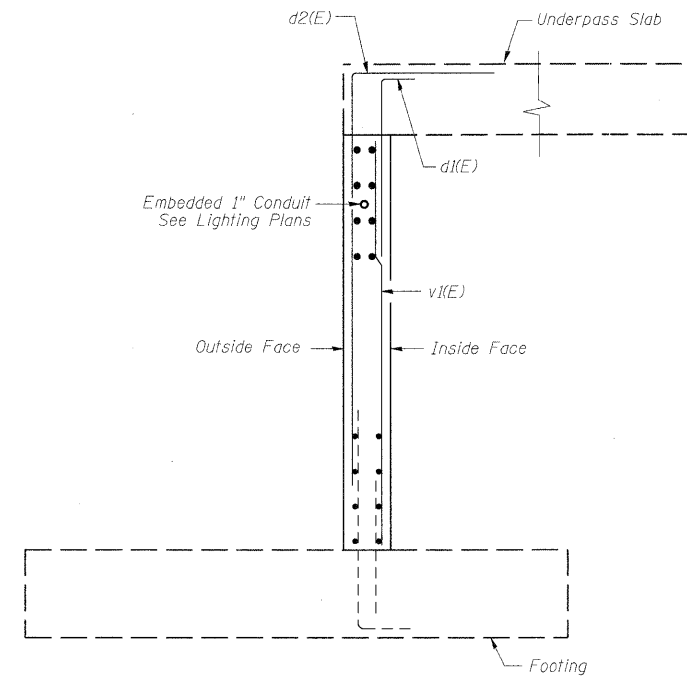
NORTH WALL ELEVATION

(South Wall Elevation Similar)
(Panels 1 thru 3, Panels 4 thru 6 similar)



NORTH WALL ELEVATION

(South Wall Elevation Similar)
(Panels 7 and 8)

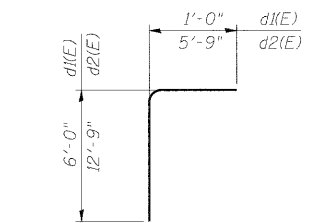


SECTION A-A

BILL OF MATERIAL

| Bar | No. | Size | Length | Shape | |
|----------------------------------|-----|------|--------|---------|--------|
| d1(E) | 436 | #6 | 7'-0" | ┌ | |
| d2(E) | 872 | #9 | 18'-6" | ┌ | |
| h1(E) | 288 | #6 | 32'-7" | — | |
| h2(E) | 48 | #6 | 21'-5" | — | |
| h3(E) | 48 | #6 | 18'-7" | — | |
| v1(E) | 436 | #5 | 11'-0" | — | |
| Concrete Structures | | | | Cu. Yd. | 251.1 |
| Reinforcement Bars, Epoxy Coated | | | | Pound | 81,420 |

* Totals shown are for the north and south walls.



BARS d1(E) & d2(E)

Notes:

1. Stations and offsets are measured with respect to the Mixed-Use Path along IL 25/Stearns Road.
2. (1) Denotes panel number.
3. For Section X-X see sheets SB-5 and SB-6.

| | |
|----------|---------|
| DESIGNED | AAY |
| CHECKED | AJK |
| DRAWN | VH |
| CHECKED | HMA/DMC |

benesch
alfred benesch & company
Engineers • Surveyors • Planners
205 North Michigan Avenue, Suite 2400
Chicago, Illinois 60601
312-565-0450
Job # 3944

**WALL REINFORCEMENT
MIXED-USE PATH UNDER
IL 25/DUNHAM ROAD
F.A.P. 360 - SEC. 06-00214-15-BR
KANE COUNTY
STATION 609+05.92
STRUCTURE NO. 045-3174**