

STATE OF ILLINOIS
DEPARTMENT OF TRANSPORTATION

ROUTE NO.	SECTION	COUNTY	TOTAL SHEETS	SHEET NO.
		KANE	545	351
FED. ROAD DIST. NO. 7		ILLINOIS	FED. AID PROJECT	

SHEET SS- 2
OF 22 SHEETS

Contract # 63074

GENERAL NOTES

- Reinforcement bars shall conform to the requirements of ASTM A 706 Gr 60. See Special Provisions.
- Reinforcement bars designated (E) shall be epoxy coated.
- Layout of slope protection system may be varied to suit ground conditions in the field as directed by the Engineer.
- The embankment configuration shown shall be the minimum that must be placed and compacted prior to construction of the abutments.
- The Contractor shall drive test piles to 110% of the nominal required bearing specified in production locations at substructures specified or approved by the Engineer before ordering the remainder of piles.
- All organic and/or other unsuitable materials must be removed from foundation and slab subgrades and backfill areas and then backfilled with an acceptable fill material per IDOT specification, and compacted to 95% of maximum density at optimum moisture content (ASTM D1557).
- Prior to construction, detailing of shop drawing and ordering materials the Contractor shall verify all dimensions and site conditions of the project area.
- Reinforcement bar lap splices shall be Class C. Top bars so placed that more than 12 inches of concrete is cast below the reinforcement shall be lapped for 1.4 x basic lap. Reinforcement bar splices shall be in accordance with the following table unless shown otherwise on the drawing.

Bar Size	Basic Lap	1.4 Basic Lap
#4	1'-8"	2'-5"
#5	2'-2"	3'-0"
#6	2'-7"	3'-7"
#7	3'-5"	4'-10"
#8	4'-6"	6'-4"
#9	5'-9"	8'-1"
#10	7'-3"	10'-3"
#11	9'-0"	12'-7"

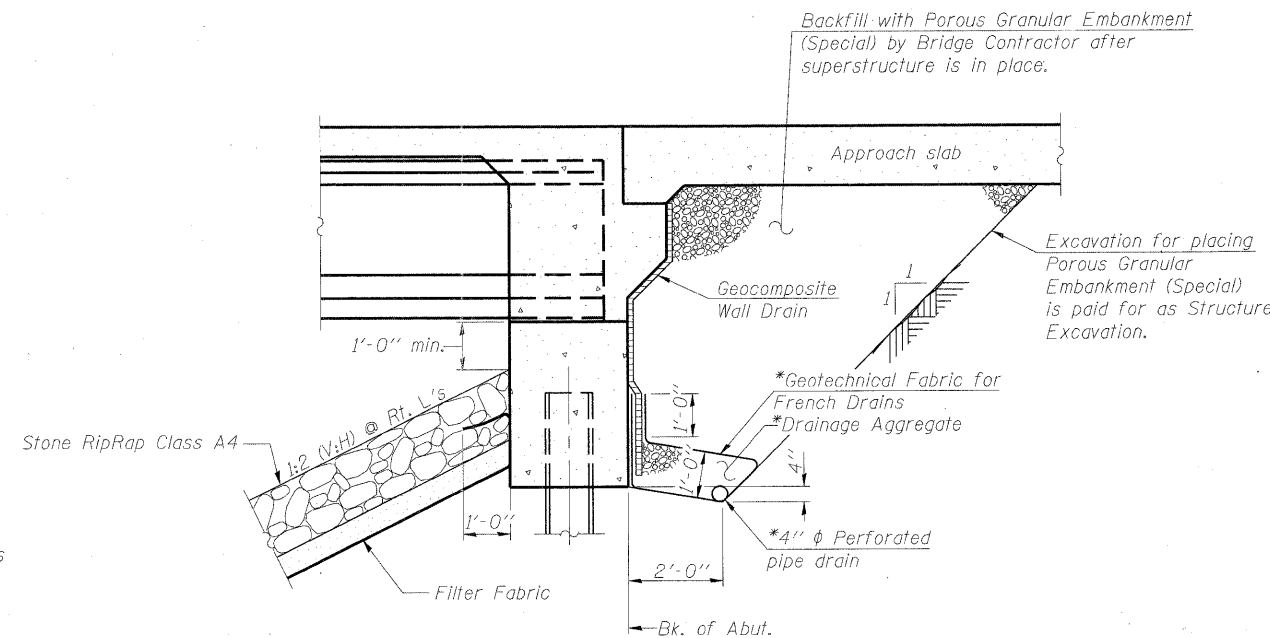
- Slipforming of the parapets is not allowed.
- For limits of removal of unsuitable materials, see Civil Plans.
- No in-stream work or work that could potentially impact the Fox River can occur between March 1, 2010 and June 7, 2010. In-stream work includes the East Branch of Brewster Creek.
- All disturbed areas and work areas must be isolated from creek flows at all times. The diversion/isolation of the creek flows must be constructed from non-erodible materials. The KDSWCD must be in agreement with overall exact method of diversion/isolation prior to the commencement of construction (Contact KDSWCD 630-584-7961 x3).
- No work shall be performed in flowing water and no equipment shall enter Brewster Creek without approval of the KDSWCD or the Army Corps of Engineers. Work in and near the critical areas should be isolated from concentrated flows or stream flow. The stream banks shall be stabilized at the end of each day. Once work in this area begins, priority shall be given to the completion of the work and final stabilization of all disturbed areas.
- See Erosion Control Plans for erosion control and de-watering details.

INDEX OF SHEETS

SS - 1 of 22	General Plan and Elevation
SS - 2 of 22	General Notes, Index of Sheets and Total Bill of Material
SS - 3 of 22	Foundation Layout
SS - 4 of 22	Deck Elevation Plan
SS - 5 of 22	Top of Slab Elevations
SS - 6 of 22	Top of Approach Slab Elevations
SS - 7 of 22	Deck Reinforcement Plan
SS - 8 of 22	Deck Cross Section
SS - 9 of 22	Diaphragm Section and Elevation
SS - 10 of 22	Parapet Elevation and Details
SS - 11 of 22	Framing Plan and Moment Table
SS - 12 of 22	48" PPC I-Beam Elevation
SS - 13 of 22	48" PPC I-Beam Details
SS - 14 of 22	West Abutment - Plan and Elevation
SS - 15 of 22	East Abutment - Plan and Elevation
SS - 16 of 22	Pile Details
SS - 17 of 22	Bar Splicer Assembly Details
SS - 18 of 22	Bridge Approach Slab Details (1 of 2)
SS - 19 of 22	Bridge Approach Slab Details (2 of 2)
SS - 20 of 22	Multi-Use Railing Details
SS - 21 of 22	Soil Boring Log 1 of 2
SS - 22 of 22	Soil Boring Log 2 of 2

TOTAL BILL OF MATERIAL

ITEM	UNIT	SUPER	SUB	TOTAL
Porous Granular Embankment, Special	Cu. Yd		213	213
Stone RipRap Class A4	Sq. Yd.		447	447
Filter Fabric	Sq. Yd.		447	447
Concrete Structures	Cu. Yd		94.9	94.9
Concrete Superstructure	Cu. Yd	365.1		365.1
Bridge Deck Grooving	Sq. Yd.	706		706
Concrete Encasement	Cu. Yd		8.4	8.4
Protective Coat	Sq. Yd.	846		846
Furnishing and Erecting Precast Prestressed Concrete I-Beams, 48 In.	Foot	479		479
Reinforcement Bars, Epoxy Coated	Pound	79,290	9,380	88,670
Bar Splicers	Each	112		112
Bicycle Railing	Foot	130		130
Parapet Railing	Foot	130		130
Furnishing Steel Piles HP12x53	Foot		1,584	1,584
Driving Piles	Foot		1,584	1,584
Test Pile Steel HP12x53	Each		2	2
Pile Shoes	Each		24	24
Name Plates	Each	1		1
Geocomposite Wall Drain	Sq. Yd.		106	106
Pipe Underdrains for Structures 4"	Foot		167	167



SECTION THRU INTEGRAL ABUTMENT
(Horiz. dim. @ Rt. L's)

*Included in the cost of Pipe Underdrains for Structures.

Note:
All drainage system components shall extend to 2'-0" from the end of each wingwall except an outlet pipe shall extend until intersecting with the side slopes. The pipes shall drain into concrete headwalls. (See Article 601.05 of the Standard Specifications and Highway Standard 601101).

DESIGNED	AJK
CHECKED	AAY
DRAWN	AYR
CHECKED	HMA/DMC

benesch
alfred benesch & company
Engineers • Surveyors • Planners
205 North Michigan Avenue, Suite 2400
Chicago, Illinois 60601
312-565-0450
Job # 3944

**GENERAL NOTES, INDEX OF SHEETS
AND TOTAL BILL OF MATERIAL
IL 25/STEARNS ROAD OVER THE
EAST BRANCH OF BREWSTER CREEK
F.A.P. 2503 - SEC. 06-00214-15-BR
KANE COUNTY
STATION 138+59.20
STRUCTURE NO. 045-2035**