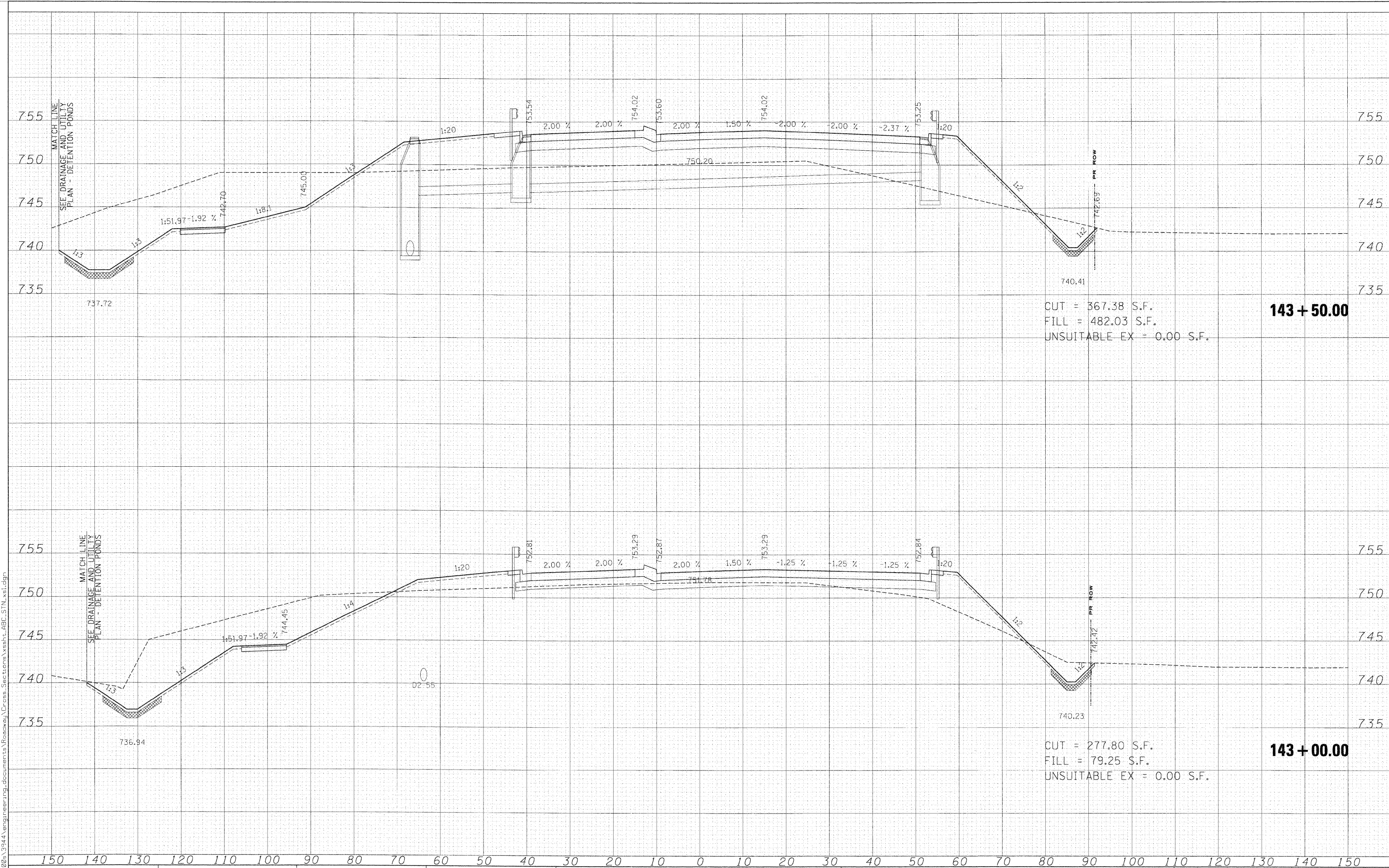


DATE	
BY	
FINAL SURVEY	SURVEYED
BY	FILED
NOTE BOOK	TEMPERATURE
NO.	AREAS CHECKED

DATE	
BY	
ORIGINAL SURVEY	SURVEYED
BY	FILED
NOTE BOOK	TEMPERATURE
NO.	AREAS CHECKED



CUT = 367.38 S.F.
 FILL = 482.03 S.F.
 UNSUITABLE EX = 0.00 S.F.

143 + 50.00

CUT = 277.80 S.F.
 FILL = 79.25 S.F.
 UNSUITABLE EX = 0.00 S.F.

143 + 00.00

FILE NAME =
 #FILES#

USER NAME = #USER#
 PLOT SCALE = 10.0000' / IN.
 PLOT DATE = 3/30/2009

DESIGNED - MAC
 DRAWN - MAC
 CHECKED - JJT
 DATE - 3/31/09

REVISED -
 REVISED -
 REVISED -
 REVISED -

**KANE COUNTY
 DIVISION OF TRANSPORTATION**

STEARNS ROAD CROSS SECTIONS

SCALE: SHEET NO. OF SHEETS STA. 143+00.00 TO STA. 143+50.00

F.A. RTE.	SECTION	COUNTY	TOTAL SHEETS	SHEET NO.
361	06-00214-15-BR	KANE/DUPAGE	545	473
FED. ROAD DIST. NO. ILLINOIS FED. AID PROJECT			CONTRACT NO. 63074	