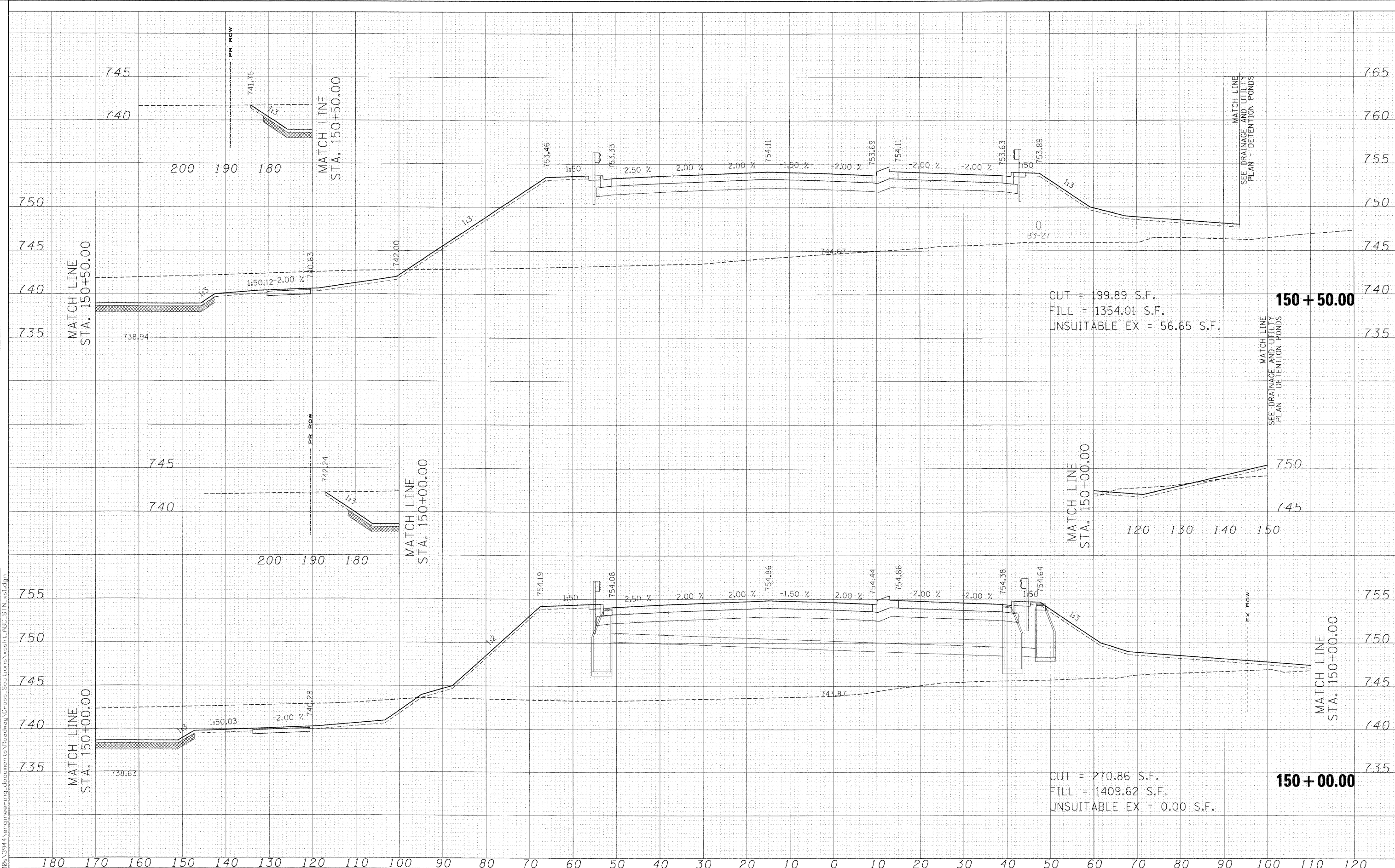


FINAL SURVEY	SURVEYED
NOTE BOOK	PLOTTED
NO.	AREAS CHECKED

ORIGINAL SURVEY	SURVEYED
NOTE BOOK	PLOTTED
NO.	AREAS CHECKED

FILE NAME = x:\31920s\3944\engineering\documents\Roadway\Cross Sections\ssht.abc.stn.xls.dgn



CUT = 199.89 S.F.
 FILL = 1354.01 S.F.
 UNSUITABLE EX = 56.65 S.F.

CUT = 270.86 S.F.
 FILL = 1409.62 S.F.
 UNSUITABLE EX = 0.00 S.F.

**KANE COUNTY
 DIVISION OF TRANSPORTATION**

STEARNS ROAD CROSS SECTIONS

DESIGNED - MAC	REVISED -
DRAWN - MAC	REVISED -
CHECKED - JJT	REVISED -
DATE - 3/31/09	REVISED -

SCALE:	SHEET NO. OF SHEETS	STA. 150+00.00 TO STA. 150+50.00
--------	---------------------	----------------------------------

F.A. RTE.	SECTION	COUNTY	TOTAL SHEETS	SHEET NO.
361	06-00214-15-BR	KANE/DUPAGE	545	480
FED. ROAD DIST. NO.			ILLINOIS FED. AID PROJECT	

CONTRACT NO. 63074