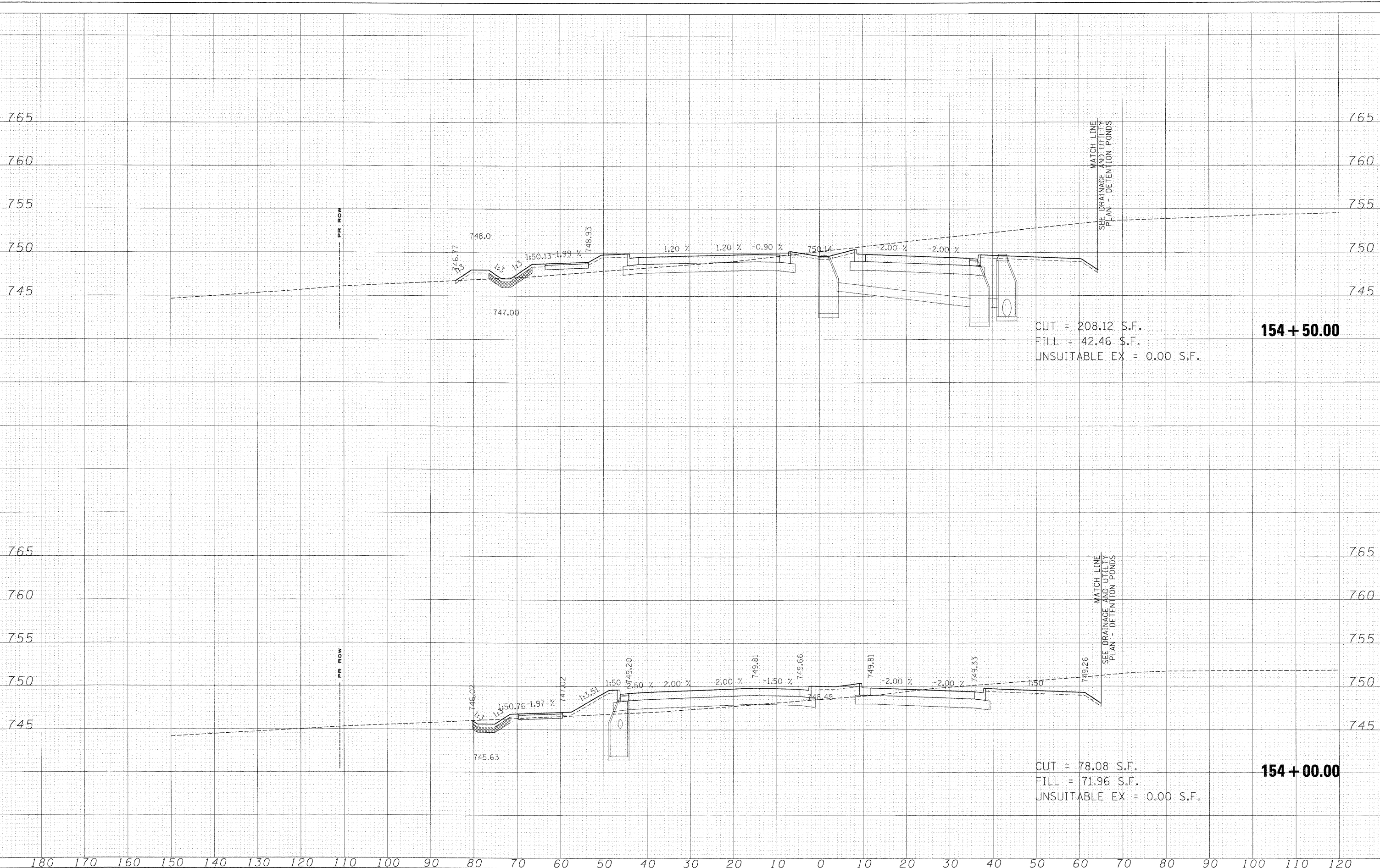


FINAL	SURVEYED
	PLOTTED
	NOTE BOOK
	AREAS CHECKED
	NO.

ORIGINAL	SURVEYED
	PLOTTED
	NOTE BOOK
	AREAS CHECKED
	NO.

x:\31302a\3144\engineering\documents\Roadway\Cross-Sections\ssht.ABC.STN.xls.dgn



CUT = 208.12 S.F.
 FILL = 42.46 S.F.
 UNSUITABLE EX = 0.00 S.F.
154 + 50.00

CUT = 78.08 S.F.
 FILL = 71.96 S.F.
 UNSUITABLE EX = 0.00 S.F.
154 + 00.00

FILE NAME =	USER NAME = *USER*	DESIGNED - MAC	REVISED -	KANE COUNTY DIVISION OF TRANSPORTATION	STEARNS ROAD CROSS SECTIONS	F.A. RTE.	SECTION	COUNTY	TOTAL SHEETS	SHEET NO.
FILES	DESIGNED - MAC	REVISED -	361			06-00214-15-BR	KANE/DUPAGE	545	484	
PLOT SCALE = 10,0000 "/ IN.	CHECKED - JJT	REVISED -	CONTRACT NO. 63074							
PLOT DATE = 3/31/09	DATE - 3/31/09	REVISED -	FED. ROAD DIST. NO. ILLINOIS FED. AID PROJECT							
SCALE:						SHEET NO.	OF	SHEETS	STA. 154+00.00	TO STA. 154+50.00