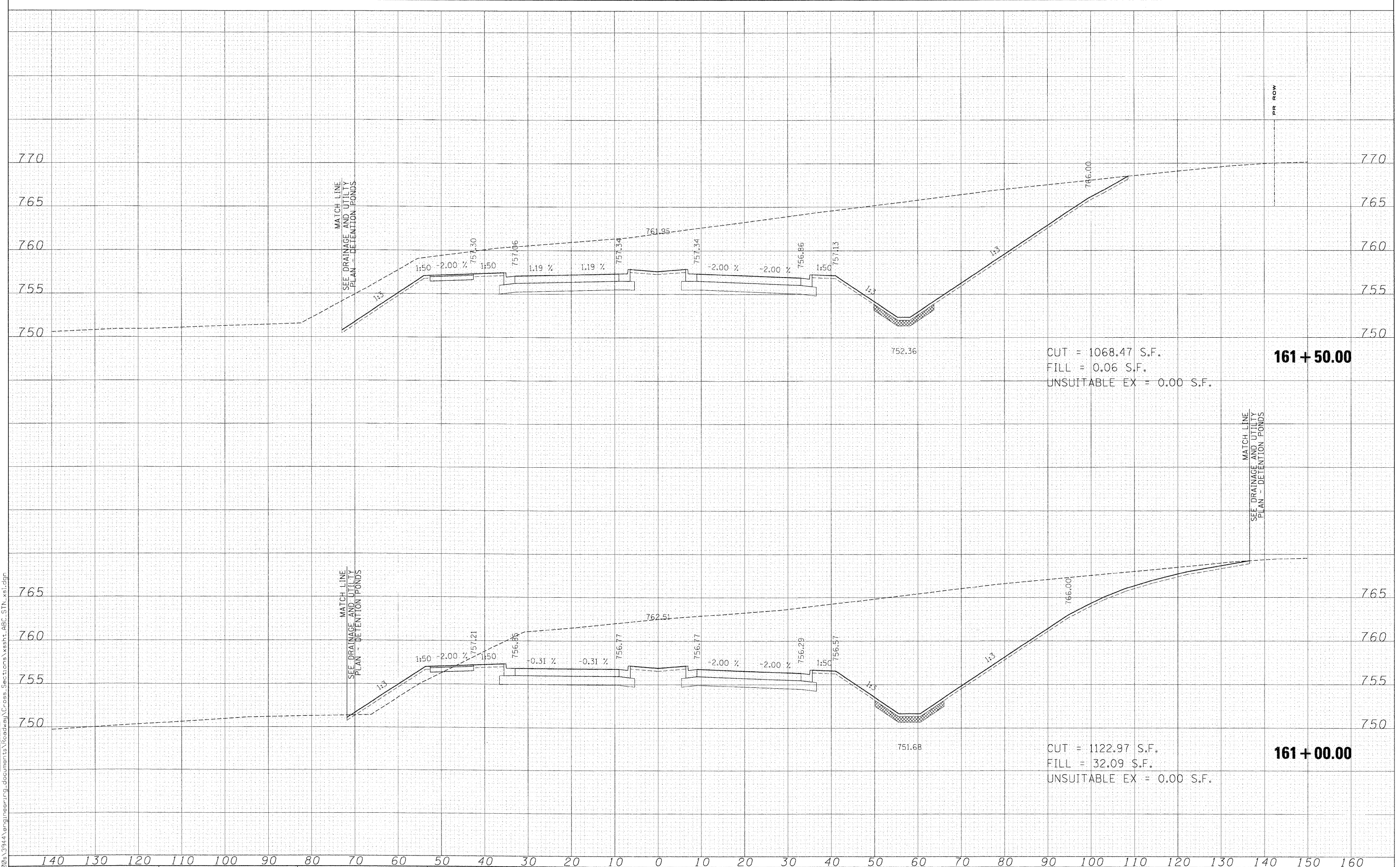


FINAL	SURVEYED	PLOTTED	AREA
NO.	BOOK	NO.	NO.
			AREAS CHECKED

ORIGINAL	SURVEYED	PLOTTED	AREA
NO.	BOOK	NO.	NO.
			AREAS CHECKED

x:\3920s\3944\eng\neer\g\_documents\Roadway\Cross Sections\ssst-ABC.STN\_xsi.dgn



CUT = 1068.47 S.F.  
 FILL = 0.06 S.F.  
 UNSUITABLE EX = 0.00 S.F.

**161 + 50.00**

CUT = 1122.97 S.F.  
 FILL = 32.09 S.F.  
 UNSUITABLE EX = 0.00 S.F.

**161 + 00.00**

FILE NAME =	USER NAME =
#FILES*	*USER*

DESIGNED -	MAC	REVISED -	-
DRAWN -	MAC	REVISED -	-
CHECKED -	JJT	REVISED -	-
DATE -	3/31/09	REVISED -	-

DESIGNED -	MAC	REVISED -	-
DRAWN -	MAC	REVISED -	-
CHECKED -	JJT	REVISED -	-
DATE -	3/31/09	REVISED -	-

**KANE COUNTY  
 DIVISION OF TRANSPORTATION**

<b>STEARNS ROAD CROSS SECTIONS</b>			
SCALE:	SHEET NO.	OF SHEETS	STA. 161+00.00 TO STA. 161+50.00

F.A. RTE.	SECTION	COUNTY	TOTAL SHEETS	SHEET NO.
361	06-00214-15-BR	KANE/DUPAGE	545	491
FED. ROAD DIST. NO.			ILLINOIS FED. AID PROJECT	
			CONTRACT NO. 63074	