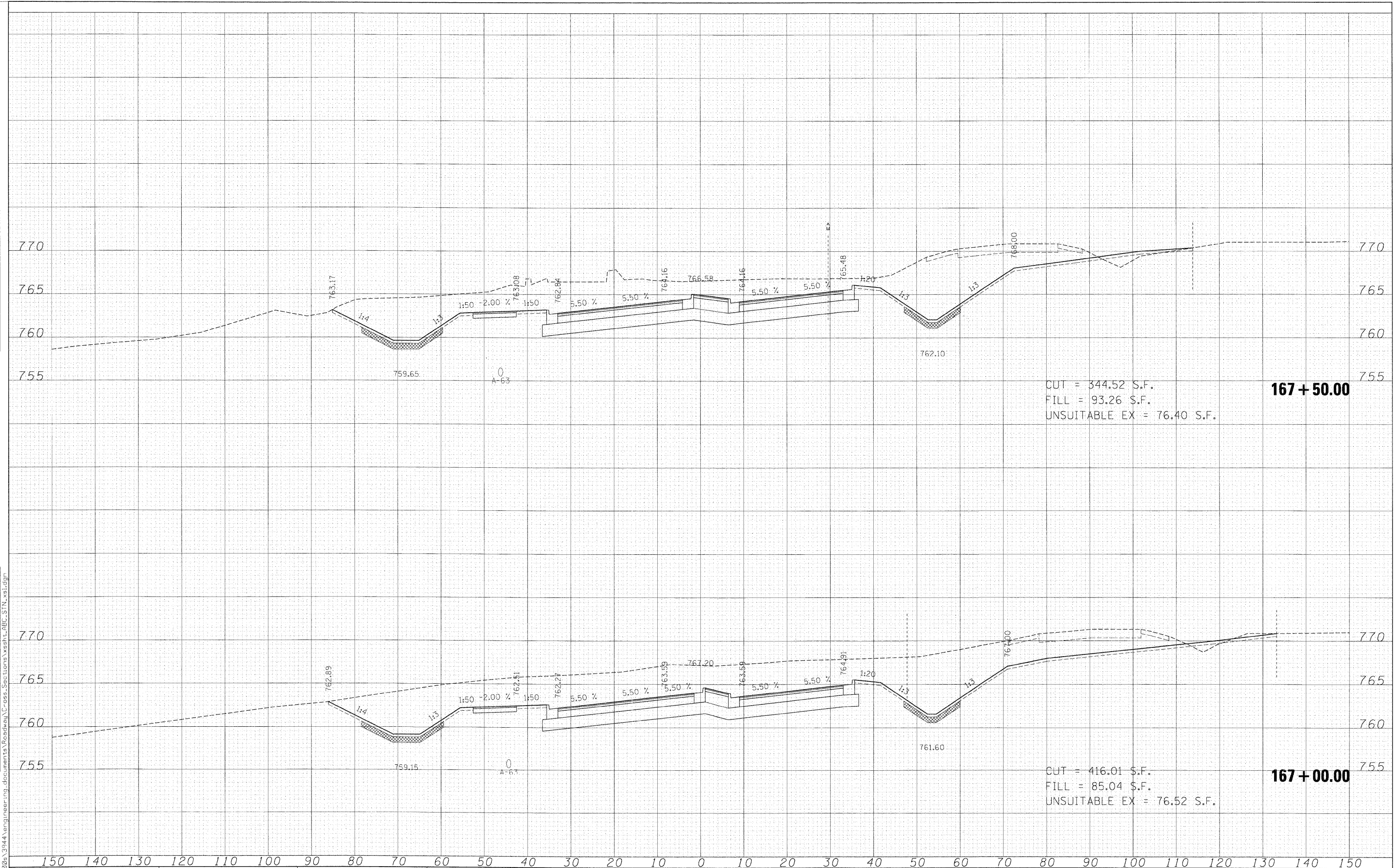


FINAL	SURVEYED
	PLOTTED
	NOTE BOOK
	AREAS CHECKED
	NO.

ORIGINAL	SURVEYED
	PLOTTED
	NOTE BOOK
	AREAS CHECKED
	NO.



CUT = 344.52 S.F.
 FILL = 93.26 S.F.
 UNSUITABLE EX = 76.40 S.F.

167+50.00

CUT = 416.01 S.F.
 FILL = 85.04 S.F.
 UNSUITABLE EX = 76.52 S.F.

167+00.00

FILE NAME =
 FILES

USER NAME = *USER*
 PLOT SCALE = 10.0000 "/ IN.
 PLOT DATE = 3/30/2009

DESIGNED - MAC
 DRAWN - MAC
 CHECKED - JJT
 DATE - 3/31/09

REVISED -
 REVISED -
 REVISED -
 REVISED -

**KANE COUNTY
 DIVISION OF TRANSPORTATION**

STEARNS ROAD CROSS SECTIONS
 SCALE: SHEET NO. OF SHEETS STA. 167+00.00 TO STA. 167+50.00

F.A. RTE.	SECTION	COUNTY	TOTAL SHEETS	SHEET NO.
361	06-00214-15-BR	KANE/DUPAGE	545	500
FED. ROAD DIST. NO.			ILLINOIS FED. AID PROJECT	
			CONTRACT NO. 63074	