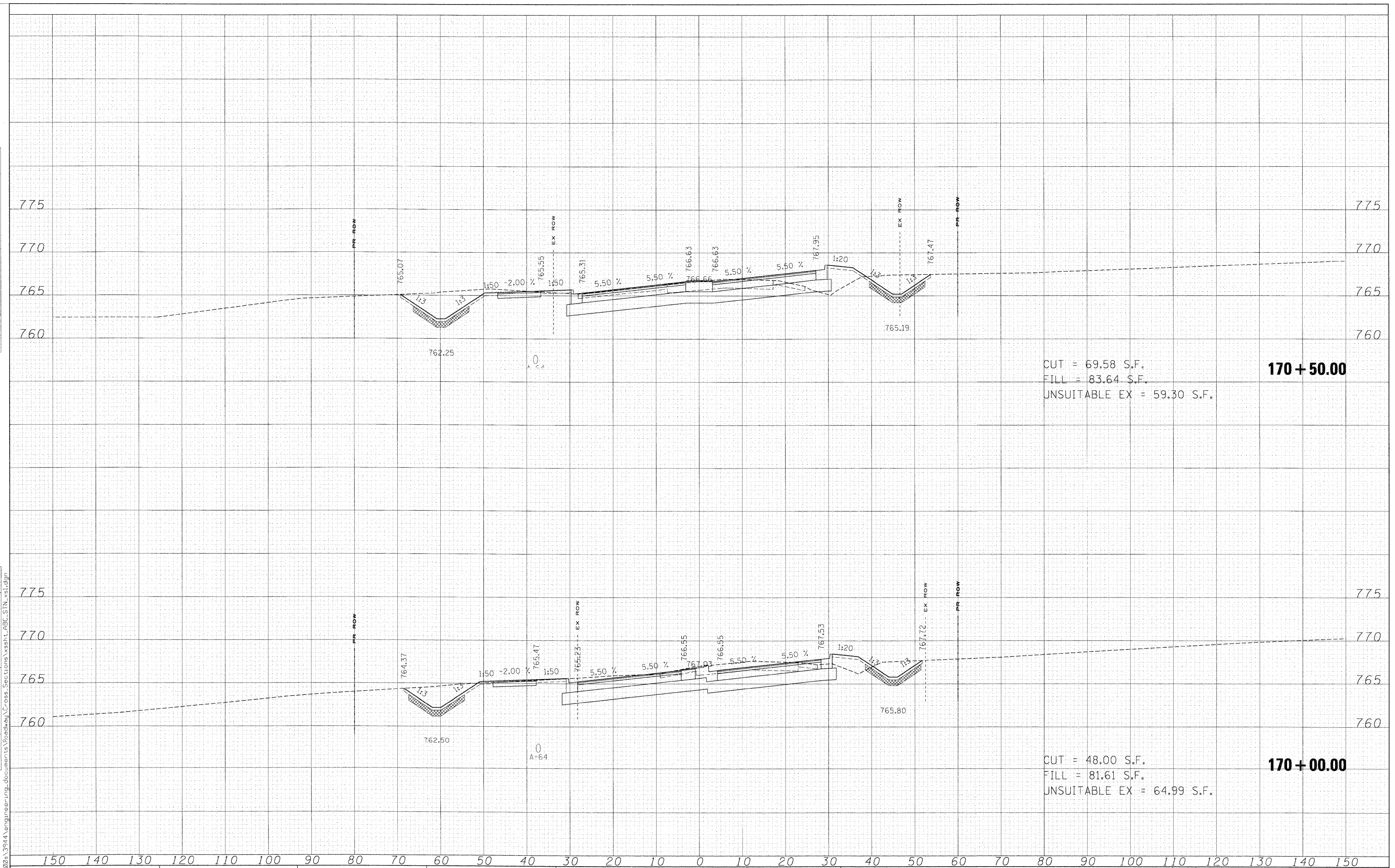


FINAL SURVEY PLotted DATE AREAS CHECKED NO.

ORIGINAL SURVEY PLotted DATE AREAS CHECKED NO.



CUT = 69.58 S.F.  
 FILL = 83.64 S.F.  
 UNSUITABLE EX = 59.30 S.F.  
**170 + 50.00**

CUT = 48.00 S.F.  
 FILL = 81.61 S.F.  
 UNSUITABLE EX = 64.99 S.F.  
**170 + 00.00**

150 140 130 120 110 100 90 80 70 60 50 40 30 20 10 0 10 20 30 40 50 60 70 80 90 100 110 120 130 140 150

FILE NAME =  
 \*FILES\*

USER NAME = \$USER\$	DESIGNED - MAC	REVISED -
	DRAWN - MAC	REVISED -
PLLOT SCALE = 1/8" = 100.0000' / IN.	CHECKED - JJT	REVISED -
PLLOT DATE = 3/30/2009	DATE - 3/31/09	REVISED -

**KANE COUNTY  
 DIVISION OF TRANSPORTATION**

**STEARNS ROAD CROSS SECTIONS**  
 SCALE: SHEET NO. OF SHEETS STA. 170+00.00 TO STA. 170+50.00

F.A. RTE.	SECTION	COUNTY	TOTAL SHEETS	SHEET NO.
361	06-00214-15-BR	KANE/DUPAGE	545	503
FED. ROAD DIST. NO. ILLINOIS FED. AID PROJECT			CONTRACT NO. 63074	