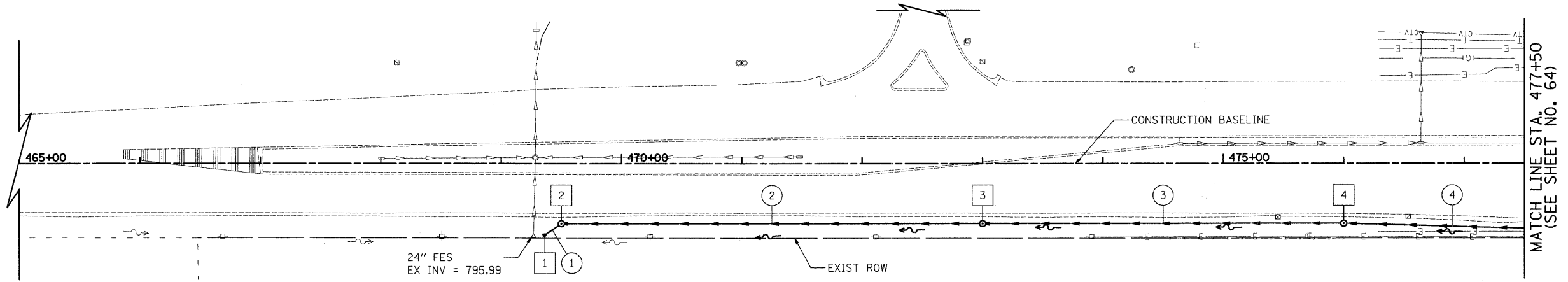


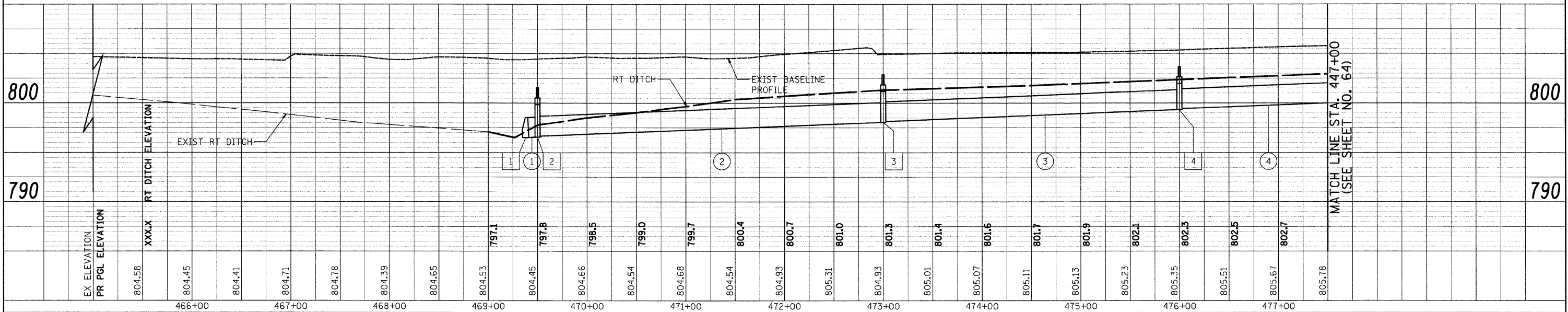
- 1 STA. 469+35, 60.0' RT.
PRC FLAR END SEC 24"
INV = 796.50 (24" NW)
- 2 STA. 469+50, 50.0' RT.
RD MAN 5 DIA TIF CL
RIM = 801.56
INV = 796.66 (24" N)
INV = 796.56 (24" SE)
- 3 STA. 473+00, 50.0' RT.
RD MAN 5 DIA TIF CL
RIM = 802.86
INV = 798.14 (24" N)
INV = 798.04 (24" S)
- 4 STA. 476+00, 50.0' RT.
RD MAN 5 DIA TIF CL
RIM = 803.67
INV = 799.42 (24" N)
INV = 799.32 (24" S)



- 1 10' - STORM SEW CL A 1, 24" @ 0.40%
T.B.F. = 0.0 CU. YD.
- 2 345' - STORM SEW CL A 1, 24" @ 0.40%
T.B.F. = 0.0 CU. YD.
- 3 295' - STORM SEW CL A 1, 24" @ 0.40%
T.B.F. = 0.0 CU. YD.
- 4 176' - STORM SEW CL A 1, 24" @ 0.40%
T.B.F. = 0.0 CU. YD.

NOTES
THE STATION AND OFFSET CALL-OUT FOR FLARED END SECTIONS IS MEASURED FROM THE TOE.

RANDALL ROAD



EX ELEVATION	804.58	804.45	804.41	804.71	804.78	804.39	804.65	804.53	797.1	804.45	797.8	804.66	798.5	804.54	799.0	804.68	799.7	804.54	800.4	804.93	800.7	805.31	801.0	804.93	801.3	805.01	801.4	805.07	801.5	805.11	801.7	805.13	801.9	805.23	802.1	805.35	802.3	805.51	802.5	805.67	802.7	805.78				
PR PGL ELEVATION																																														
RT DITCH ELEVATION																																														

DATE	
BY	
REVISED	
PLANNED	
NOTED	
NO.	

DATE	
BY	
REVISED	
PLANNED	
NOTED	
NO.	



USER NAME = mjp	DESIGNED - MJP	REVISED -
PLOT SCALE = 50.0000' / IN.	DRAWN - MJP	REVISED -
PLOT DATE = 3/27/2009	CHECKED - DNM	REVISED -
	DATE - 3/30/09	REVISED -

**KANE COUNTY
DIVISION OF TRANSPORTATION**

DRAINAGE AND UTILITIES - RANDALL ROAD
SCALE: 1"=50' SHEET NO. 1 OF 14 SHEETS STA. 465+00 TO STA. 477+50

F.A. RT. E.	SECTION	COUNTY	TOTAL SHEETS	SHEET NO.
361	06-00214-25-BR	KANE	220	63
CONTRACT NO. 63076				
FED. ROAD DIST. NO. 1 [ILLINOIS] FED. AID PROJECT				