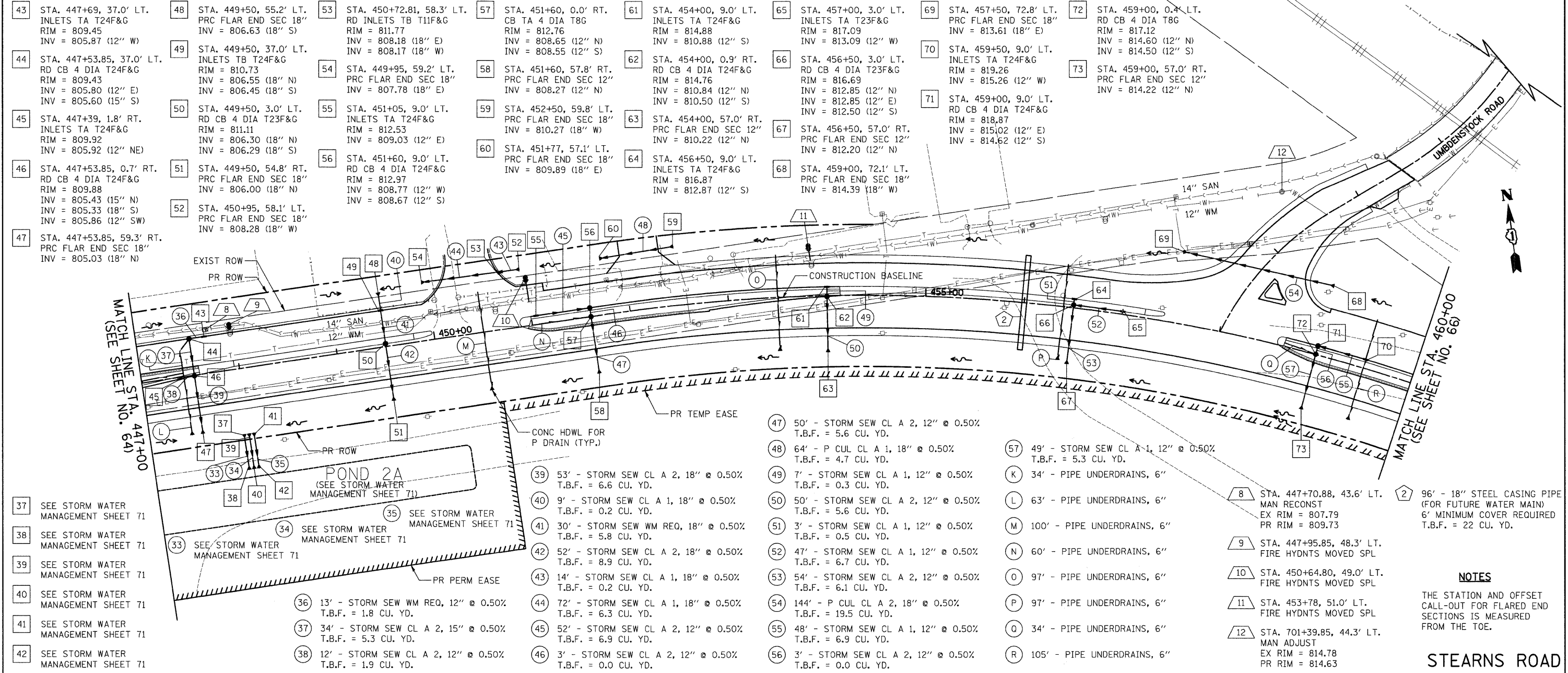


DATE	
BY	
REVISIONS	
NO.	
DESCRIPTION	
DATE	
BY	
REVISIONS	
NO.	
DESCRIPTION	
DATE	
BY	
REVISIONS	
NO.	
DESCRIPTION	

DATE	
BY	
REVISIONS	
NO.	
DESCRIPTION	
DATE	
BY	
REVISIONS	
NO.	
DESCRIPTION	
DATE	
BY	
REVISIONS	
NO.	
DESCRIPTION	



- 37 SEE STORM WATER MANAGEMENT SHEET 71
- 38 SEE STORM WATER MANAGEMENT SHEET 71
- 39 SEE STORM WATER MANAGEMENT SHEET 71
- 40 SEE STORM WATER MANAGEMENT SHEET 71
- 41 SEE STORM WATER MANAGEMENT SHEET 71
- 42 SEE STORM WATER MANAGEMENT SHEET 71

- 33 SEE STORM WATER MANAGEMENT SHEET 71
- 34 SEE STORM WATER MANAGEMENT SHEET 71
- 35 SEE STORM WATER MANAGEMENT SHEET 71
- 36 13' - STORM SEW WM REQ, 12" @ 0.50% T.B.F. = 1.8 CU. YD.
- 37 34' - STORM SEW CL A 2, 15" @ 0.50% T.B.F. = 5.3 CU. YD.
- 38 12' - STORM SEW CL A 2, 12" @ 0.50% T.B.F. = 1.9 CU. YD.

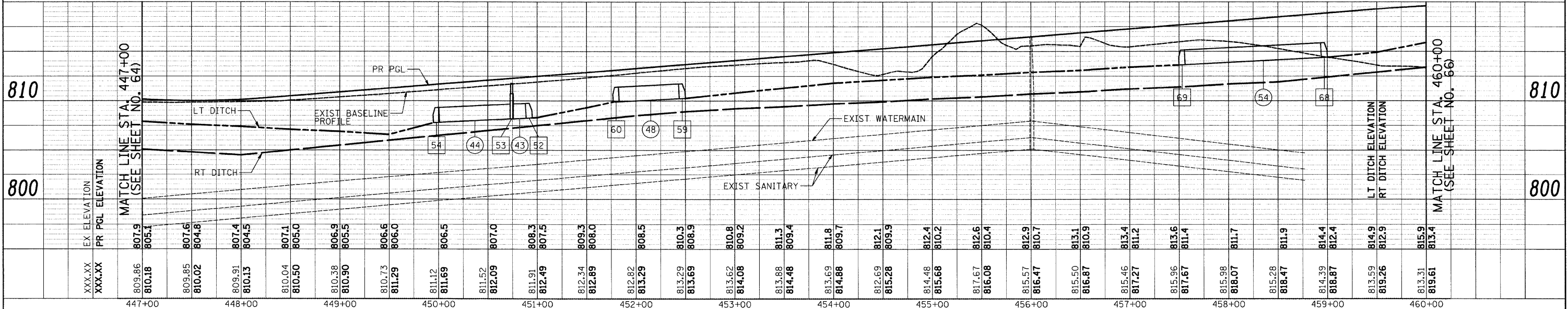
- 39 53' - STORM SEW CL A 2, 18" @ 0.50% T.B.F. = 6.6 CU. YD.
- 40 9' - STORM SEW CL A 1, 18" @ 0.50% T.B.F. = 0.2 CU. YD.
- 41 30' - STORM SEW WM REQ, 18" @ 0.50% T.B.F. = 5.8 CU. YD.
- 42 52' - STORM SEW CL A 2, 18" @ 0.50% T.B.F. = 8.9 CU. YD.
- 43 14' - STORM SEW CL A 1, 18" @ 0.50% T.B.F. = 0.2 CU. YD.
- 44 72' - STORM SEW CL A 1, 18" @ 0.50% T.B.F. = 6.3 CU. YD.
- 45 52' - STORM SEW CL A 2, 12" @ 0.50% T.B.F. = 6.9 CU. YD.
- 46 3' - STORM SEW CL A 2, 12" @ 0.50% T.B.F. = 0.0 CU. YD.

- 47 50' - STORM SEW CL A 2, 12" @ 0.50% T.B.F. = 5.6 CU. YD.
- 48 64' - P CUL CL A 1, 18" @ 0.50% T.B.F. = 4.7 CU. YD.
- 49 7' - STORM SEW CL A 1, 12" @ 0.50% T.B.F. = 0.3 CU. YD.
- 50 50' - STORM SEW CL A 2, 12" @ 0.50% T.B.F. = 5.6 CU. YD.
- 51 3' - STORM SEW CL A 1, 12" @ 0.50% T.B.F. = 0.5 CU. YD.
- 52 47' - STORM SEW CL A 1, 12" @ 0.50% T.B.F. = 6.7 CU. YD.
- 53 54' - STORM SEW CL A 2, 12" @ 0.50% T.B.F. = 6.1 CU. YD.
- 54 144' - P CUL CL A 2, 18" @ 0.50% T.B.F. = 19.5 CU. YD.
- 55 48' - STORM SEW CL A 1, 12" @ 0.50% T.B.F. = 6.9 CU. YD.
- 56 3' - STORM SEW CL A 2, 12" @ 0.50% T.B.F. = 0.0 CU. YD.

- 57 49' - STORM SEW CL A-1, 12" @ 0.50% T.B.F. = 5.3 CU. YD.
- K 34' - PIPE UNDERDRAINS, 6"
- L 63' - PIPE UNDERDRAINS, 6"
- M 100' - PIPE UNDERDRAINS, 6"
- N 60' - PIPE UNDERDRAINS, 6"
- O 97' - PIPE UNDERDRAINS, 6"
- P 97' - PIPE UNDERDRAINS, 6"
- Q 34' - PIPE UNDERDRAINS, 6"
- R 105' - PIPE UNDERDRAINS, 6"

- 8 STA. 447+70.88, 43.6' LT. MAN RECONST EX RIM = 807.79 PR RIM = 809.73
- 9 STA. 447+95.85, 48.3' LT. FIRE HYDNTS MOVED SPL
- 10 STA. 450+64.80, 49.0' LT. FIRE HYDNTS MOVED SPL
- 11 STA. 453+78, 51.0' LT. FIRE HYDNTS MOVED SPL
- 12 STA. 701+39.85, 44.3' LT. MAN ADJUST EX RIM = 814.78 PR RIM = 814.63
- 2 96' - 18" STEEL CASING PIPE (FOR FUTURE WATER MAIN) 6" MINIMUM COVER REQUIRED T.B.F. = 22 CU. YD.

NOTES
THE STATION AND OFFSET CALL-OUT FOR FLARED END SECTIONS IS MEASURED FROM THE TOE.



FILE NAME =	USER NAME = m_jp	DESIGNED - MJP	REVISED -	F.A. RTE. 361	SECTION 06-00214-25-BR	COUNTY KANE	TOTAL SHEETS 220	SHEET NO. 65
CIVILTECH	PLOT SCALE = 50.0000' / IN.	DRAWN - MJP	REVISED -	CONTRACT NO. 63076				
	PLOT DATE = 3/27/2009	CHECKED - DNM	REVISED -	SCALE: 1"=50'				
		DATE - 3/30/09	REVISED -	SHEET NO. 3 OF 14 SHEETS STA. 447+00 TO STA. 460+00				
				FED. ROAD DIST. NO. 1 ILLINOIS FED. AID PROJECT				