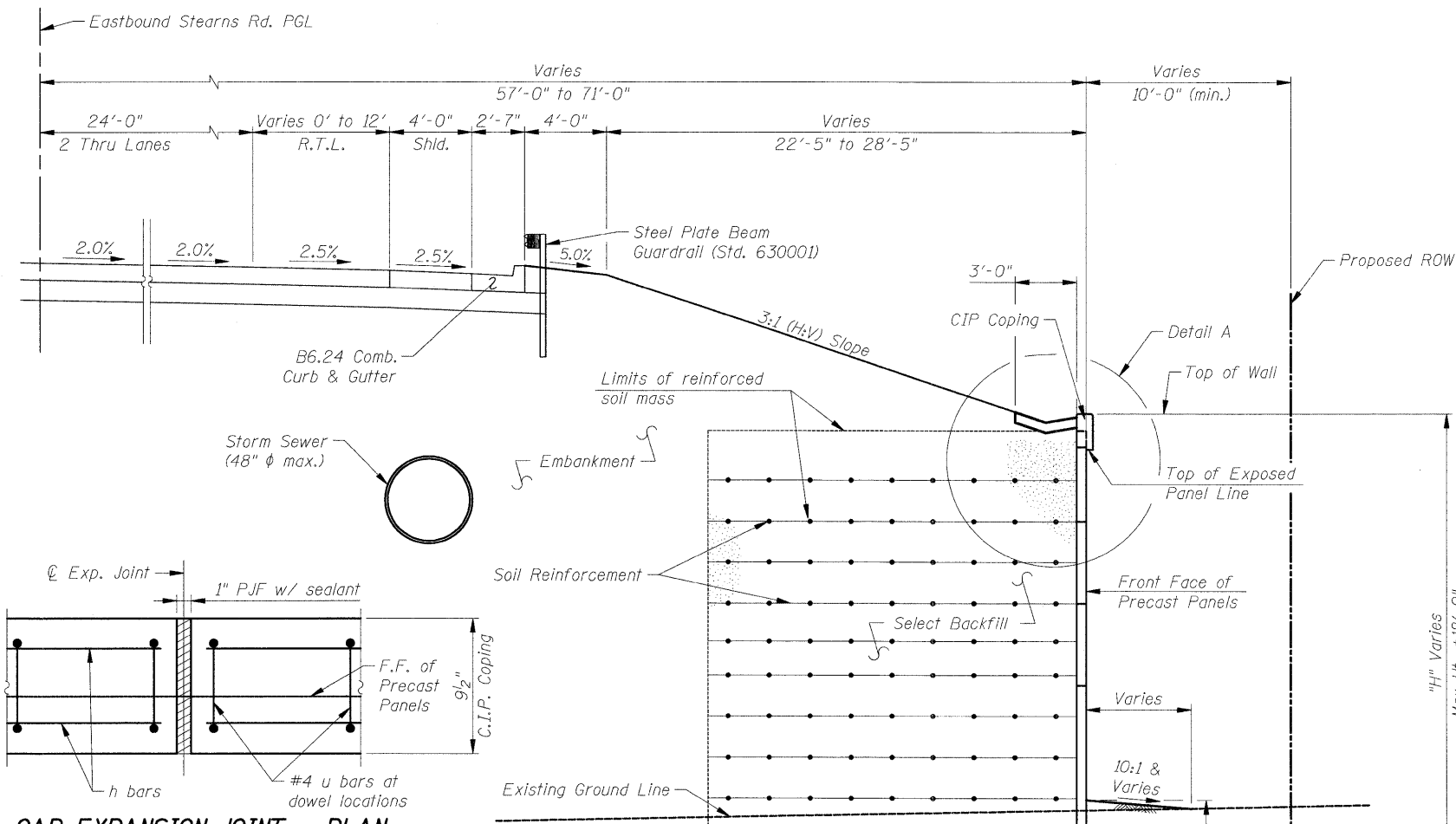
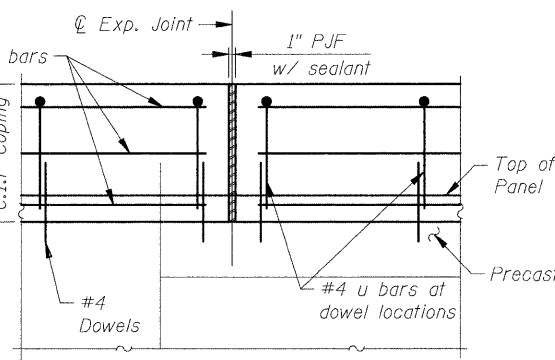


| | | | | |
|----------------------------|---------------------------|----------------|---------------------|------------------|
| ROUTE NO. F.A.P. 361 | SECTION 06-00214-25-BR | COUNTY KANE | TOTAL SHEETS 220 | SHEET NO. 125 |
| FED. ROAD DIST. NO. 1 | | ILLINOIS | FED. AID PROJECT- | |

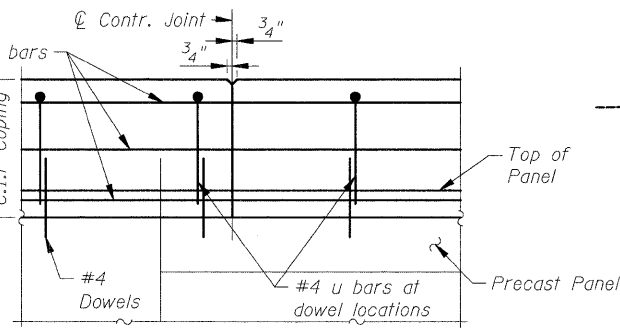
Contract # 63076



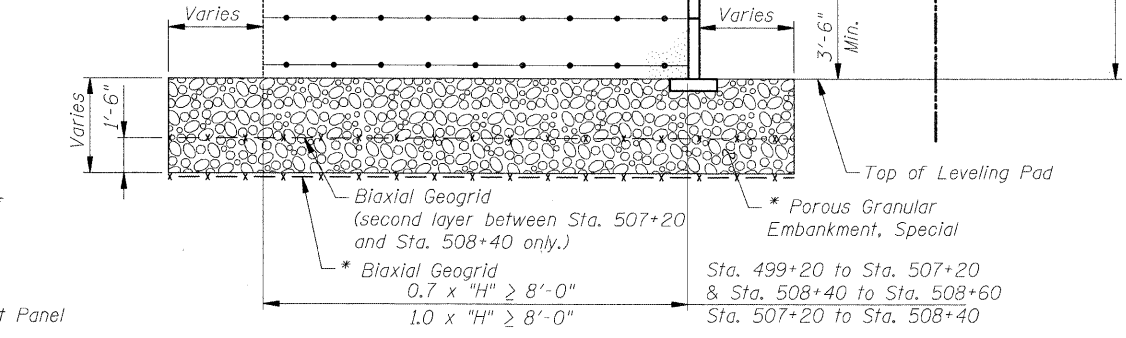
CAP EXPANSION JOINT - PLAN



CAP EXPANSION JOINT - ELEVATION

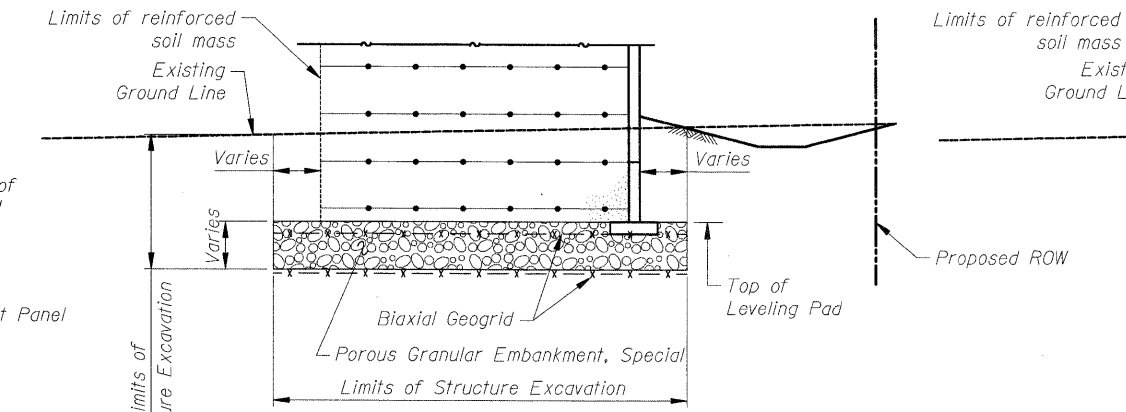


CAP CONTRACTION JOINT - ELEVATION



TYPICAL WALL SECTION

(Looking East)
* - Occurs only between Station 505+50 and 508+62

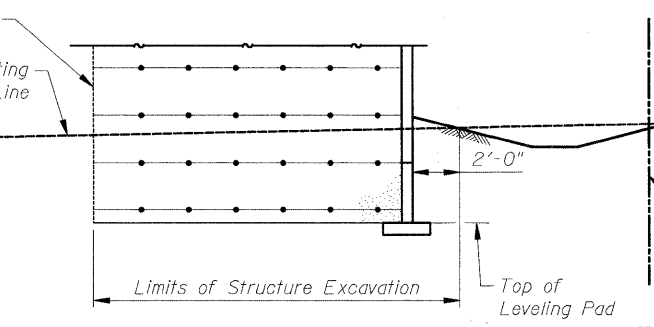


LIMITS OF STRUCTURE EXCAVATION

(Looking East)
Station 505+50 to Station 508+62

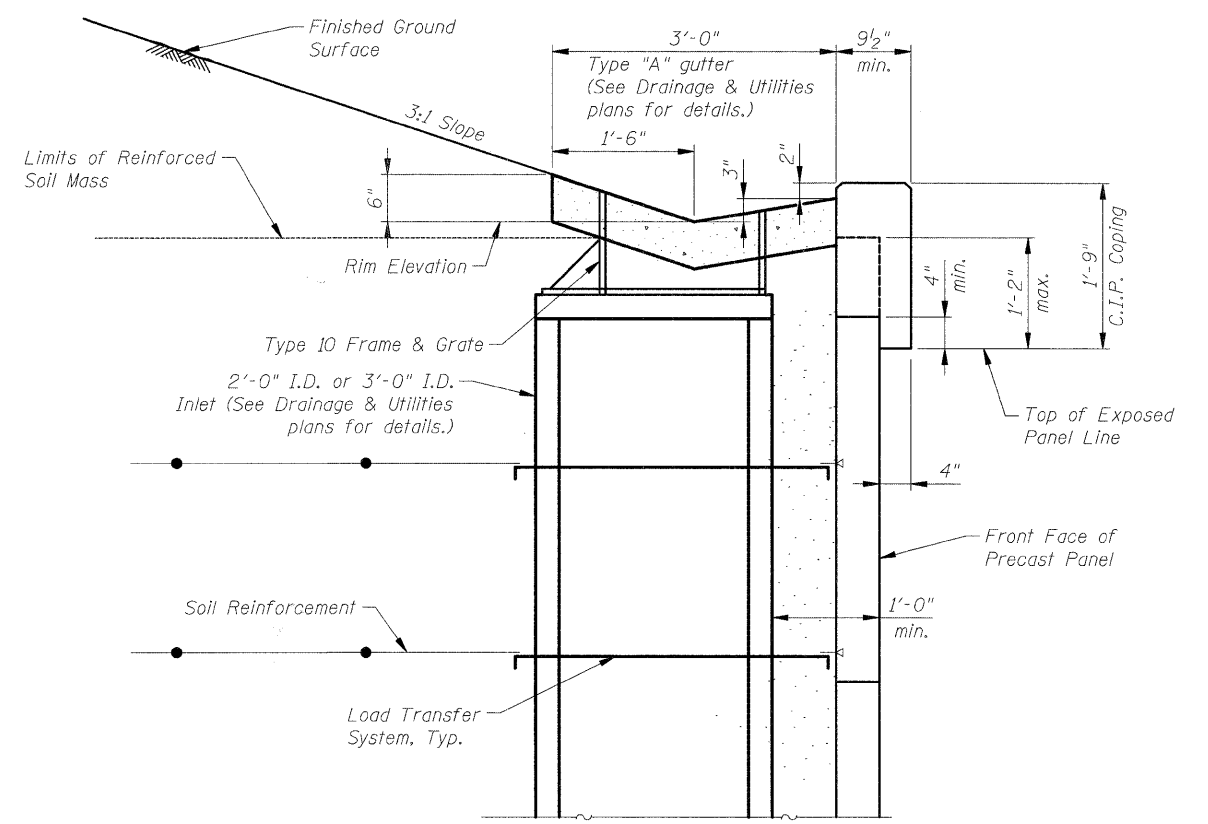
Notes:

- Neither the construction of the CIP Coping, Type "A" Gutter nor the roadway pavement shall not begin until after the roadway embankment and retaining wall have been in place for 5 months, at which time two thirds of the anticipated settlement of 6 inches is assumed to have occurred, without prior approval of the Engineer.
- The limits and quantities of removal and replacement shown are based on the boring data and may be modified by the District Geotechnical and Field Engineers for variable subsurface conditions encountered in the field.

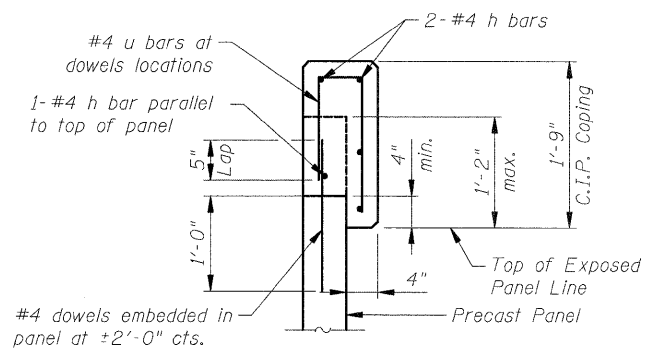


LIMITS OF STRUCTURE EXCAVATION

(Looking East)
Station 499+20 to Station 505+50



DETAIL A



CAST IN PLACE COPING

Notes: All edges shall have 3/4" chamfer.

| REVISIONS | |
|-----------|------|
| NAME | DATE |
| | |
| | |
| | |
| | |
| | |
| | |

ILLINOIS DEPARTMENT OF TRANSPORTATION
SECTIONS & DETAILS
STEARNS ROAD (FAP 361) RETAINING WALL
STA. 499+20 TO STA. 508+60
SECTION 06-00214-25-BR KANE COUNTY
STRUCTURE NUMBER 045-7000
SCALE: None DRAWN BY: M. Lange
DATE: March 30, 2009 CHECKED BY: G. Hatlestad

CIVILTECH
450 E Devon Ave, Suite 300
Itasca, Illinois 60143
Tel: 630.773.3900 Fax: 630.773.3975
www.civiltechinc.com