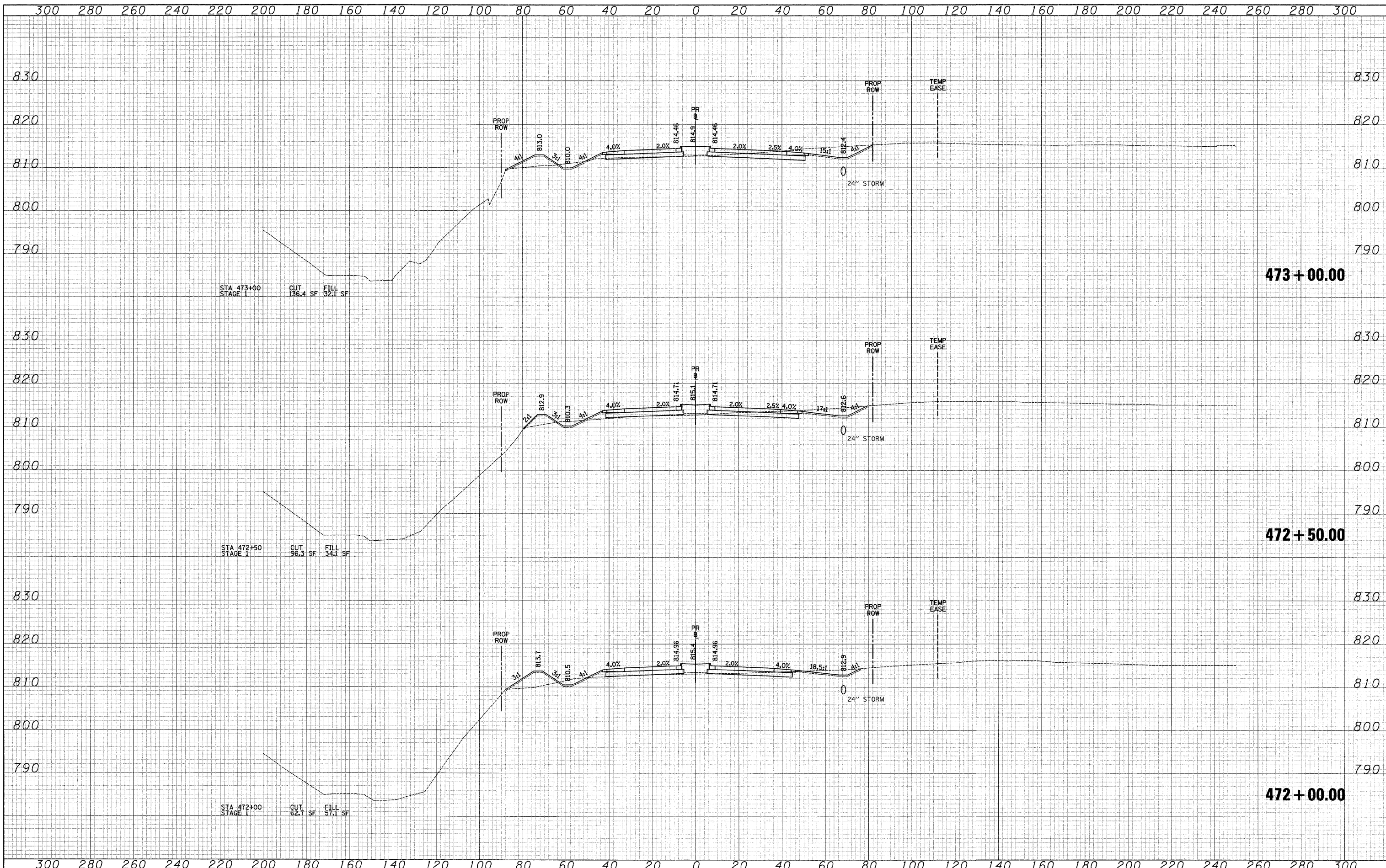


DATE	
BY	
SURVEYED	
PLOTTED	
TEMPLATE	
NOTE BOOK	
AREAS CHECKED	

DATE	
BY	
SURVEYED	
PLOTTED	
TEMPLATE	
NOTE BOOK	
AREAS CHECKED	



FILE NAME =	USER NAME = ead	DESIGNED - JSM	REVISED -	<b>KANE COUNTY DEPARTMENT OF TRANSPORTATION</b>	<b>CROSS SECTIONS - STEARNS ROAD</b>	F.A. RTE. 361	SECTION 06-00214-25-BR	COUNTY KANE	TOTAL SHEETS 220	SHEET NO. 174		
	PLOT SCALE = 20.0000' / IN.	DRAWN - JSM	REVISED -			SCALE: 1"=10'V/20'H	SHEET NO. 29 OF 63 SHEETS	STA. 472+00.00	TO STA. 473+00.00	CONTRACT NO. 63076		
	PLOT DATE = 3/27/2009	CHECKED - DNM	REVISED -			FED. ROAD DIST. NO. 1   ILLINOIS FED. AID PROJECT						
		DATE - 3/30/09	REVISED -									