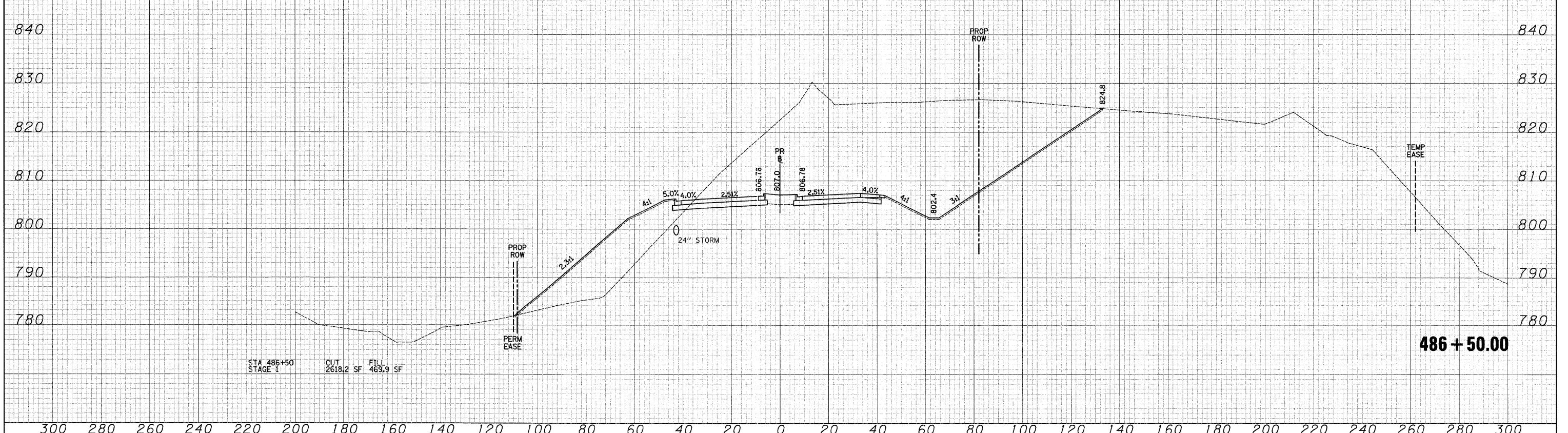
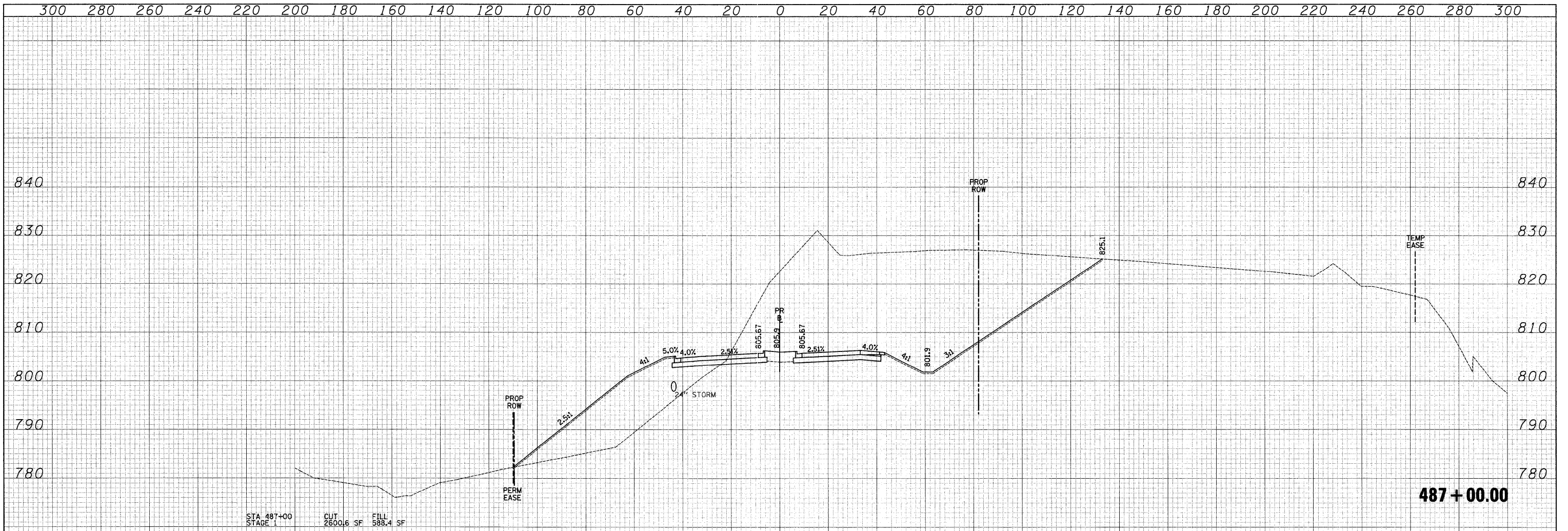


DATE	
BY	
SURVEYED	
PLOTTED	
TEMPLATE	
NOTE BOOK	
NO.	
AREAS CHECKED	

DATE	
BY	
SURVEYED	
PLOTTED	
TEMPLATE	
NOTE BOOK	
NO.	
AREAS CHECKED	



FILE NAME =	USER NAME = ead	DESIGNED - JSM	REVISED -	KANE COUNTY DEPARTMENT OF TRANSPORTATION	CROSS SECTIONS - STEARNS ROAD	F.A. RTE. 361	SECTION 06-00214-25-BR	COUNTY KANE	TOTAL SHEETS 220	SHEET NO. 187		
	PLOT SCALE = 20.0000' / IN.	DRAWN - JSM	REVISED -			SCALE: 1"=10'V/20'H SHEET NO. 42 OF 63 SHEETS	STA. 486+50.00 TO STA. 487+00.00	CONTRACT NO. 63076				
	PLOT DATE = 3/27/2009	CHECKED - DNM	REVISED -			FED. ROAD DIST. NO. 1 ILLINOIS FED. AID PROJECT						
		DATE - 3/30/09	REVISED -									

