

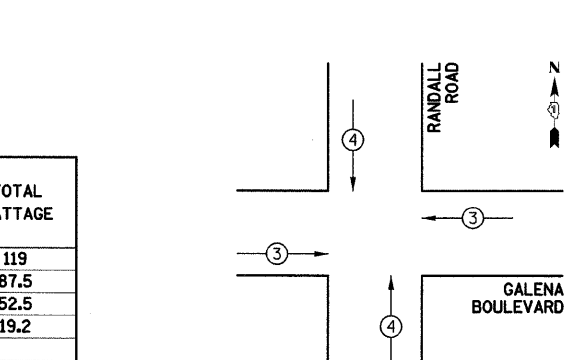
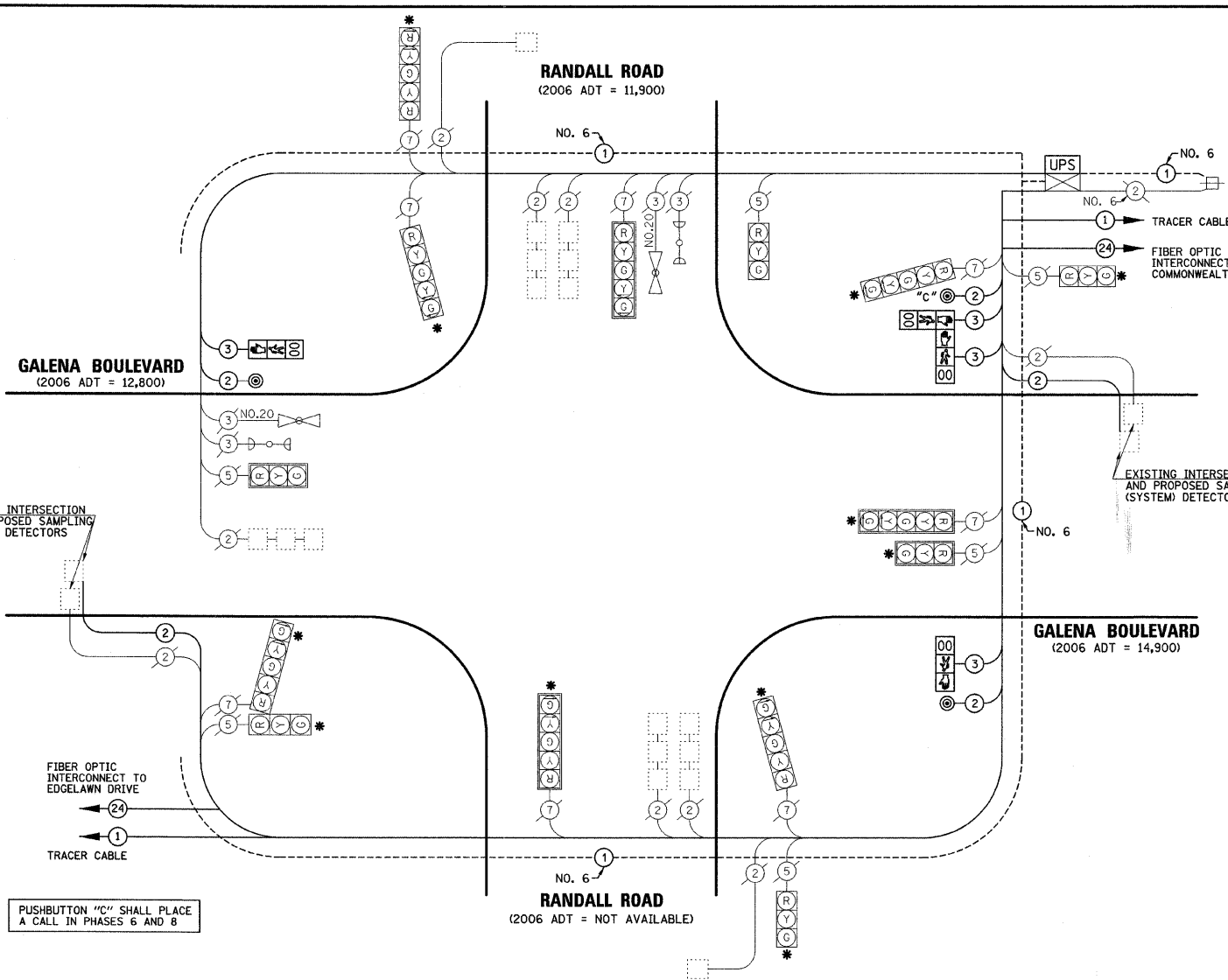
CABLE PLAN LEGEND

EXISTING	PROPOSED	DESCRIPTION
		8" (200mm) TRAFFIC SIGNAL SECTION
		12" (300mm) TRAFFIC SIGNAL SECTION
		12" (300mm) PEDESTRIAN SIGNAL SECTION
		12" (300mm) PEDESTRIAN SIGNAL SECTION
		CONTROLLER CABINET
		SERVICE INSTALLATION
		TELEPHONE INSTALLATION
		VEHICLE DETECTOR, INDUCTION LOOP
		MAGNETIC DETECTOR
		EMERGENCY VEHICLE LIGHT DETECTOR
		CONFIRMATION BEACON
		PUSHBUTTON DETECTOR
		LUMINAIRE
		DENOTES NUMBER OF CONDUCTORS. ALL CABLE NO. 14 EXCEPT AS INDICATED. ALL LOOP DETECTOR CABLE TO BE SHIELDED.
		GROUND CABLE IN CONDUIT NO. 6 SOLID COPPER (GREEN)
		FIBER OPTIC CABLE IN CONDUIT NO. 62.5/125 2-MM12F SMI2F
		SIGNAL FACE WITH BACKPLATE. "P" INDICATES PROGRAMMED HEAD.
		RAILROAD CONTROL CABINET
		ILLUMINATED SIGN "NO LEFT TURN"
		ILLUMINATED SIGN "NO RIGHT TURN"
		WIRELESS ANTENNA
		GROUND ROD AT HANDHOLE (H), DOUBLE HANDHOLE (H), OR CONTROLLER (C)
		GROUND ROD AT POST (P) OR MAST ARM POLE (MA)
		GROUND ROD AT ELECTRIC SERVICE INSTALLATION
		UNINTERRUPTABLE POWER SUPPLY
		LED STREET NAME SIGN
		VIDEO DETECTION CAMERA

SCHEDULE OF QUANTITIES

PAY ITEM DESCRIPTION	UNIT	RANDALL ROAD
MAINTENANCE OF EXISTING TRAFFIC SIGNAL INSTALLATION	EACH	1
ELECTRIC CABLE IN CONDUIT, SIGNAL NO. 14 2C	FOOT	336
ELECTRIC CABLE IN CONDUIT, SIGNAL NO. 14 3C	FOOT	413
ELECTRIC CABLE IN CONDUIT, LEAD-IN, NO. 14 1 PAIR	FOOT	767
PEDESTRIAN SIGNAL HEAD, LED, 1-FACE, BRACKET MOUNTED WITH COUNTDOWN TIMER	EACH	2
PEDESTRIAN SIGNAL HEAD, LED, 2-FACE, BRACKET MOUNTED WITH COUNTDOWN TIMER	EACH	1
INDUCTIVE LOOP DETECTOR	EACH	2
PEDESTRIAN PUSH-BUTTON	EACH	3
REMOVE ELECTRIC CABLE FROM CONDUIT	FOOT	792
REMOVE EXISTING TRAFFIC SIGNAL EQUIPMENT	EACH	1
UNINTERRUPTABLE POWER SUPPLY	EACH	1
ELECTRIC CABLE IN CONDUIT, GROUNDING, NO. 6 1C	FOOT	269.5
GROUND EXISTING HANDHOLE FRAME AND COVER	EACH	4
SIGNAL HEAD, LED, 3-SECTION, BRACKET MOUNTED, RETROFIT	EACH	3
SIGNAL HEAD, LED, 3-SECTION, MAST ARM MOUNTED, RETROFIT	EACH	1
SIGNAL HEAD, LED, 5-SECTION, BRACKET MOUNTED, RETROFIT	EACH	5
SIGNAL HEAD, LED, 5-SECTION, MAST ARM MOUNTED, RETROFIT	EACH	2

* SIGNAL HEAD, LED RETROFIT

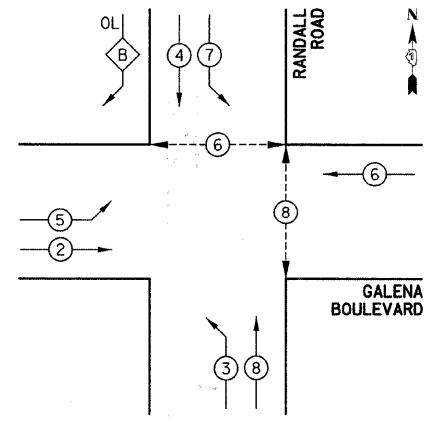


PROPOSED EMERGENCY VEHICLE PREEMPTORS

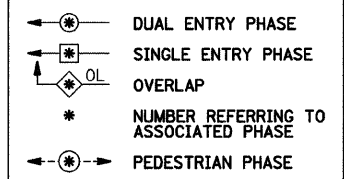
PROPOSED EMERGENCY VEHICLE PREEMPTORS	3	4
MOVEMENT	←	↑

FOUNDATION (DEPTH)	FT. (m)	CABLE SLACK	FT. (m)	VERTICAL	FT. (m)
TYPE A - POST	4 (1.2)	HANDHOLE	6.5 (2.0)	ALL FOUNDATIONS	3.5 (1.0)
C - CONTROLLER	4 (1.2)	DOUBLE HANDHOLE	13 (4.0)	MAST ARM (L) POLE	20'±L-2=
D - CONTROLLER	4 (1.2)	SIGNAL POST	2 (1.0)		(6m±L-0.6m)
E - M.A. LENGTH		CONTROLLER CAB.	1 (0.5)	BRACKET MOUNTED	13 (4.0)
<30'	30" (900mm)	FIBER OPTIC	13 (4.0)	PED. PUSHBUTTON	4 (1.2)
<40'	30" (750mm)	ELECTRIC SERVICE	1 (0.5)	ELECTRIC SERVICE	13.5 (4.1)
<40'	36" (900mm)	GROUND CABLE	1 (0.5)	SERVICE TO GROUND	13.5 (4.1)
<50'	36" (900mm)			POST MOUNTED	6 (1.8)
≥50'	36" (900mm)				

CONTROLLER SEQUENCE

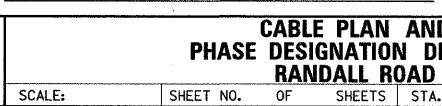


CONTROLLER SEQUENCE LEGEND



OVERLAP PHASE = PERMISSIVE PHASE + PROTECTED PHASE
B = 4 + 5

PHASE DESIGNATION DIAGRAM



I.D.O.T TRAFFIC SIGNAL INSTALLATION ELECTRICAL SERVICE REQUIREMENTS

TYPE	NO. LAMPS	WATTAGE		% OPERATION	TOTAL WATTAGE
		INCAND.	LED		
SIGNAL (RED)	14		17	0.50	119
(YELLOW)	14		25	0.25	87.5
(GREEN)	14		15	0.25	52.5
ARROW	16		12	0.10	19.2
PED. SIGNAL	4		25	1.00	100
CONTROLLER	1		100	1.00	100
UPS	1		25	1.00	25
TOTAL =					503.2

ENERGY COSTS TO: CITY OF AURORA
44 E. DOWNER PLACE
AURORA, ILLINOIS 60507-2067

ENERGY SUPPLY CONTACT: MARK SCHERIBEL
PHONE: (630) 723-2128
COMPANY: COMMONWEALTH EDISON

DATE: _____ BY: _____

PLAN: _____

NO. _____

DATE: _____ BY: _____

PROFILE: _____

NO. _____