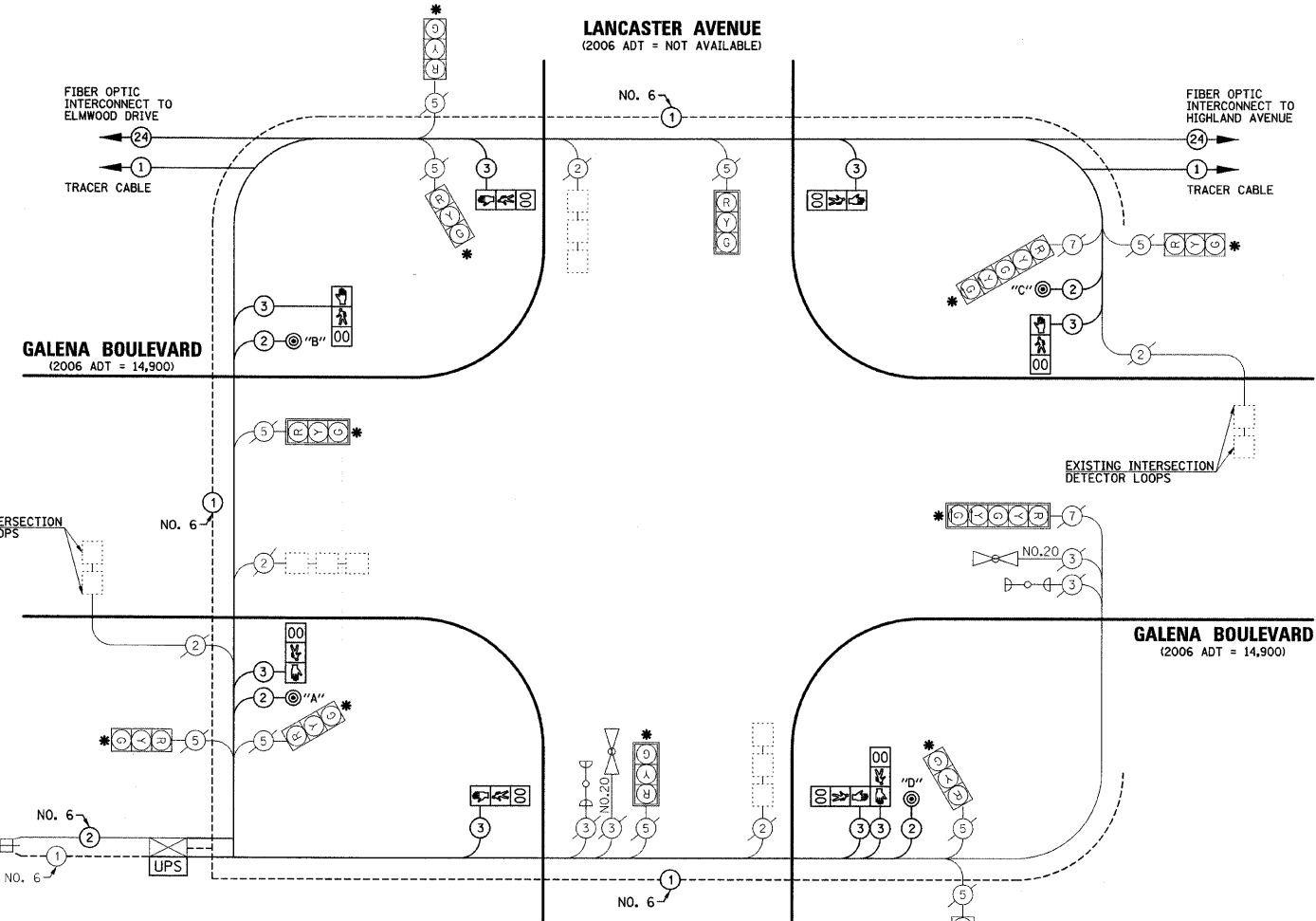
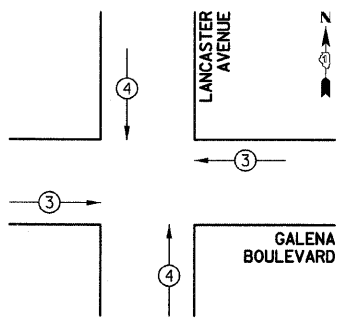


**CABLE PLAN LEGEND**

EXISTING	PROPOSED	DESCRIPTION
		8" (200mm) TRAFFIC SIGNAL SECTION
		12" (300mm) TRAFFIC SIGNAL SECTION
		12" (300mm) PEDESTRIAN SIGNAL SECTION
		12" (300mm) PEDESTRIAN SIGNAL SECTION
		CONTROLLER CABINET
		SERVICE INSTALLATION
		TELEPHONE INSTALLATION
		VEHICLE DETECTOR, INDUCTION LOOP
		MAGNETIC DETECTOR
		EMERGENCY VEHICLE LIGHT DETECTOR
		CONFIRMATION BEACON
		PUSHBUTTON DETECTOR
		LUMINAIRE
		DENOTES NUMBER OF CONDUCTORS. ALL CABLE NO. 14 EXCEPT AS INDICATED. ALL LOOP DETECTOR CABLE TO BE SHIELDED.
		FIBER OPTIC CABLE IN CONDUIT NO. 62.5/125 2-MM12F SM12F
		SIGNAL FACE WITH BACKPLATE. "P" INDICATES PROGRAMMED HEAD.
		RAILROAD CONTROL CABINET
		ILLUMINATED SIGN "NO LEFT TURN"
		ILLUMINATED SIGN "NO RIGHT TURN"
		WIRELESS ANTENNA
		GROUND ROD AT HANDHOLE (H), DOUBLE HANDHOLE (H), OR CONTROLLER (C)
		GROUND ROD AT POST (P) OR MAST ARM POLE (MA)
		GROUND ROD AT ELECTRIC SERVICE INSTALLATION
		UNINTERRUPTIBLE POWER SUPPLY
		LED STREET NAME SIGN
		VIDEO DETECTION CAMERA



- PUSHBUTTON "A" SHALL PLACE A CALL IN PHASES 2 AND 4
- PUSHBUTTON "B" SHALL PLACE A CALL IN PHASES 4 AND 6
- PUSHBUTTON "C" SHALL PLACE A CALL IN PHASES 6 AND 8
- PUSHBUTTON "D" SHALL PLACE A CALL IN PHASES 2 AND 8



**PROPOSED EMERGENCY VEHICLE PREEMPTORS**

PROPOSED EMERGENCY VEHICLE PREEMPTORS	3	4
MOVEMENT		

FOUNDATION (DEPTH)	FT. (m)	CABLE SLACK	FT. (m)	VERTICAL	FT. (m)
TYPE A - POST	4 (1.2)	HANDHOLE	6.5 (2.0)	ALL FOUNDATIONS	3.5 (1.0)
C - CONTROLLER	4 (1.2)	DOUBLE HANDHOLE	13 (4.0)	MAST ARM (L) POLE	20'-H-2=(6m+H-0.6m)
D - CONTROLLER	4 (1.2)	SIGNAL POST	2 (1.0)	BRACKET MOUNTED	13 (4.0)
E - M.A. LENGTH		CONTROLLER CAB.	1 (0.5)	PED. PUSHBUTTON	4 (1.2)
<30'	30" (900mm)	FIBER OPTIC	13 (4.0)	ELECTRIC SERVICE	13.5 (4.1)
<40'	30" (750mm)	ELECTRIC SERVICE	1 (0.5)	SERVICE TO GROUND	13.5 (4.1)
<40'	36" (900mm)	GROUND CABLE	1 (0.5)	POST MOUNTED	6 (1.8)
<50'	36" (900mm)				
>50'	36" (900mm)				

**I.D.O.T TRAFFIC SIGNAL INSTALLATION ELECTRICAL SERVICE REQUIREMENTS**

TYPE	NO. LAMPS	WATTAGE		% OPERATION	TOTAL WATTAGE
		INCAND.	LED		
SIGNAL (RED)	12		17	0.50	102
(YELLOW)	12		25	0.25	75
(GREEN)	12		15	0.25	45
ARROW	4		12	0.10	4.8
PED. SIGNAL	8		25	1.00	200
CONTROLLER	1		100	1.00	100
UPS	1		25	1.00	25
<b>TOTAL =</b>					<b>551.8</b>

**ENERGY COSTS TO:** CITY OF AURORA  
44 E. DOWNER PLACE  
AURORA, ILLINOIS 60507-2067

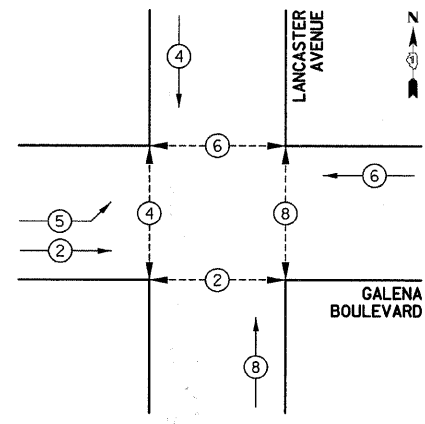
**ENERGY SUPPLY CONTACT:** MARK SCHERIBEL  
PHONE: (630) 723-2128  
COMPANY: COMMONWEALTH EDISON

**SCHEDULE OF QUANTITIES**

PAY ITEM DESCRIPTION	UNIT	LANCASTER STREET
MAINTENANCE OF EXISTING TRAFFIC SIGNAL INSTALLATION	EACH	1
ELECTRIC CABLE IN CONDUIT, SIGNAL NO. 14 2C	FOOT	461
ELECTRIC CABLE IN CONDUIT, SIGNAL NO. 14 3C	FOOT	1030
PEDESTRIAN SIGNAL HEAD, LED, 1-FACE, BRACKET MOUNTED WITH COUNTDOWN TIMER	EACH	6
PEDESTRIAN SIGNAL HEAD, LED, 2-FACE, BRACKET MOUNTED WITH COUNTDOWN TIMER	EACH	1
PEDESTRIAN PUSH-BUTTON	EACH	4
REMOVE ELECTRIC CABLE FROM CONDUIT	FOOT	2040
REMOVE EXISTING TRAFFIC SIGNAL EQUIPMENT	EACH	1
UNINTERRUPTIBLE POWER SUPPLY	EACH	1
ELECTRIC CABLE IN CONDUIT, GROUNDING, NO. 6 1C	FOOT	247.5
GROUND EXISTING HANDHOLE FRAME AND COVER	EACH	6
SIGNAL HEAD, LED, 3-SECTION, BRACKET MOUNTED, RETROFIT	EACH	7
SIGNAL HEAD, LED, 3-SECTION, MAST ARM MOUNTED, RETROFIT	EACH	2
SIGNAL HEAD, LED, 5-SECTION, BRACKET MOUNTED, RETROFIT	EACH	1
SIGNAL HEAD, LED, 5-SECTION, MAST ARM MOUNTED, RETROFIT	EACH	1

\* SIGNAL HEAD, LED RETROFIT

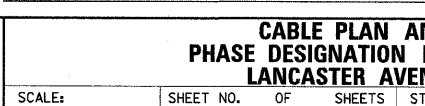
**CONTROLLER SEQUENCE**



**CONTROLLER SEQUENCE LEGEND**

- 
- 
- 
- 
- 

**PHASE DESIGNATION DIAGRAM**



**PLAN**

DATE	BY	REVISION

**PROFILE**

DATE	BY	REVISION

FILE NAME =	USER NAME = .USER.	DESIGNED -	REVISED -
g:\Jobs\smith\2007\070690 AURO - Traffic	Signal\070690 AURO Galena Blvd Traffic	DRAWN -	REVISED -
		CHECKED - APS	REVISED -
		DATE -	REVISED -

STATE OF ILLINOIS  
DEPARTMENT OF TRANSPORTATION

**CABLE PLAN AND PHASE DESIGNATION DIAGRAM LANCASTER AVENUE**

SCALE:	SHEET NO. OF SHEETS	STA. TO STA.
--------	---------------------	--------------

F.A. RTE.	SECTION	COUNTY	TOTAL SHEETS	SHEET NO.
	05-00257-00-TL	KANE	39	23
CONTRACT NO. 63105				
FED. ROAD DIST. NO. ILLINOIS FED. AID PROJECT				