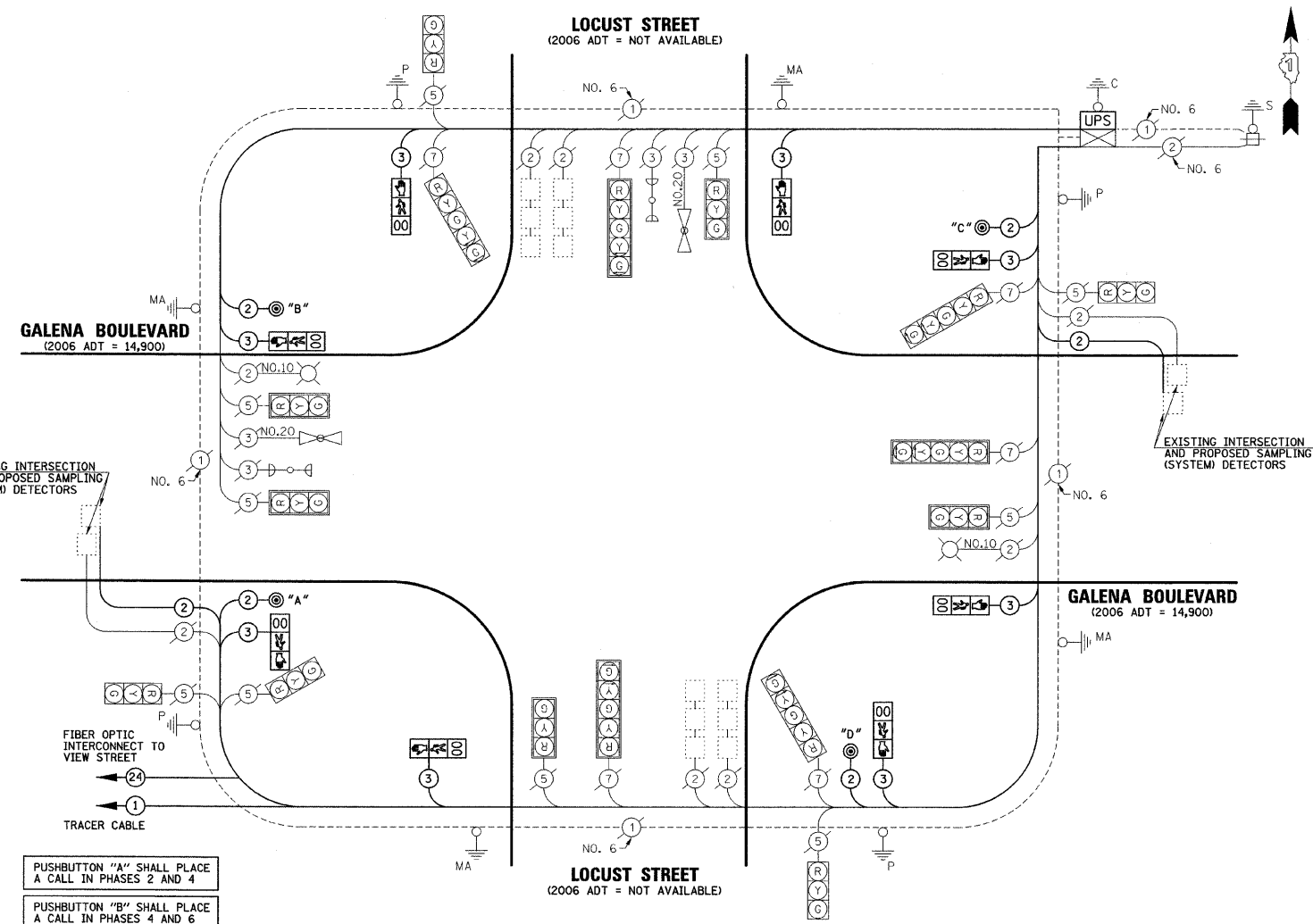
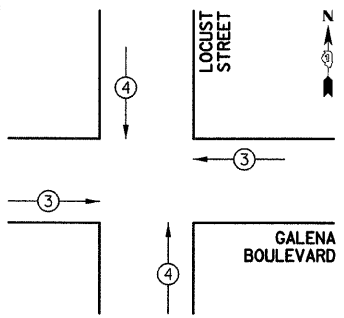


CABLE PLAN LEGEND

- | | | |
|-----------------|-----------------|---|
| EXISTING | PROPOSED | |
| | | 8" (200mm) TRAFFIC SIGNAL SECTION |
| | | 12" (300mm) TRAFFIC SIGNAL SECTION |
| | | 12" (300mm) PEDESTRIAN SIGNAL SECTION |
| | | 12" (300mm) PEDESTRIAN SIGNAL SECTION |
| | | CONTROLLER CABINET |
| | | SERVICE INSTALLATION |
| | | TELEPHONE INSTALLATION |
| | | VEHICLE DETECTOR, INDUCTION LOOP |
| | | MAGNETIC DETECTOR |
| | | EMERGENCY VEHICLE LIGHT DETECTOR |
| | | CONFIRMATION BEACON |
| | | PUSHBUTTON DETECTOR |
| | | LUMINAIRE |
| | | DENOTES NUMBER OF CONDUCTORS.
ALL CABLE NO. 14 EXCEPT AS INDICATED.
ALL LOOP DETECTOR CABLE TO BE SHIELDED. |
| | | GROUND CABLE IN CONDUIT
NO. 6 SOLID COPPER (GREEN) |
| | | FIBER OPTIC CABLE IN CONDUIT
NO. 62.5/125 2-MM12F SM12F |
| | | SIGNAL FACE WITH BACKPLATE.
"P" INDICATES PROGRAMMED HEAD. |
| | | RAILROAD CONTROL CABINET |
| | | ILLUMINATED SIGN
"NO LEFT TURN" |
| | | ILLUMINATED SIGN
"NO RIGHT TURN" |
| | | WIRELESS ANTENNA |
| | | GROUND ROD AT HANDHOLE (H),
DOUBLE HANDHOLE (H), OR CONTROLLER (C) |
| | | GROUND ROD AT POST (P)
OR MAST ARM POLE (MA) |
| | | GROUND ROD AT ELECTRIC
SERVICE INSTALLATION |
| | | UNINTERRUPTIBLE POWER SUPPLY |
| | | LED STREET NAME SIGN |
| | | VIDEO DETECTION CAMERA |



- PUSHBUTTON "A" SHALL PLACE A CALL IN PHASES 2 AND 4
- PUSHBUTTON "B" SHALL PLACE A CALL IN PHASES 4 AND 6
- PUSHBUTTON "C" SHALL PLACE A CALL IN PHASES 6 AND 8
- PUSHBUTTON "D" SHALL PLACE A CALL IN PHASES 2 AND 8



PROPOSED EMERGENCY VEHICLE PREEMPTORS

PROPOSED EMERGENCY VEHICLE PREEMPTORS	3	4
MOVEMENT	←	↑

FOUNDATION (DEPTH)	FT. (m)	CABLE SLACK	FT. (m)	VERTICAL	FT. (m)
TYPE A - POST	4 (1.2)	HANDHOLE	6.5 (2.0)	ALL FOUNDATIONS	3.5 (1.0)
C - CONTROLLER	4 (1.2)	DOUBLE HANDHOLE	13 (4.0)	MAST ARM (L) POLE	20'±L-2=
D - CONTROLLER	4 (1.2)	SIGNAL POST	2 (1.0)		(6m±L-0.6m)
E - M.A. LENGTH		CONTROLLER CAB.	1 (0.5)	BRACKET MOUNTED	13 (4.0)
<30'	30" (900mm)	FIBER OPTIC	13 (4.0)	PED. PUSHBUTTON	4 (1.2)
<40'	30" (750mm)	ELECTRIC SERVICE	1 (0.5)	ELECTRIC SERVICE	13.5 (4.1)
<40'	36" (900mm)	GROUND CABLE	1 (0.5)	SERVICE TO GROUND	13.5 (4.1)
<50'	36" (900mm)			POST MOUNTED	6 (1.8)
≥50'	36" (900mm)				

I.D.O.T TRAFFIC SIGNAL INSTALLATION ELECTRICAL SERVICE REQUIREMENTS

TYPE	NO. LAMPS	WATTAGE		% OPERATION	TOTAL WATTAGE
		INCAND.	LED		
SIGNAL (RED)	16		17	0.50	136
(YELLOW)	16		25	0.25	100
(GREEN)	16		15	0.25	60
ARROW	12		12	0.10	14.4
PED. SIGNAL	8		25	1.00	200
CONTROLLER	2		100	1.00	200
UPS	1		25	1.00	25
TOTAL =					735.4

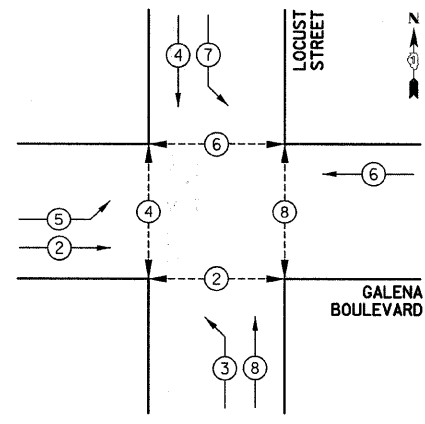
ENERGY COSTS TO: CITY OF AURORA
44 E. DOWNER PLACE
AURORA, ILLINOIS 60507-2067

ENERGY SUPPLY CONTACT: MARK SCHERIBEL
PHONE: (630) 723-2128
COMPANY: COMMONWEALTH EDISON

SCHEDULE OF QUANTITIES

PAY ITEM DESCRIPTION	UNIT	LOCUST STREET
MAINTENANCE OF EXISTING TRAFFIC SIGNAL INSTALLATION	EACH	1
ELECTRIC CABLE IN CONDUIT, SIGNAL NO. 14 2C	FOOT	562
ELECTRIC CABLE IN CONDUIT, SIGNAL NO. 14 3C	FOOT	1074
ELECTRIC CABLE IN CONDUIT, LEAD-IN, NO. 14 1 PAIR	FOOT	812.5
PEDESTRIAN SIGNAL HEAD, LED, 1-FACE, BRACKET MOUNTED WITH COUNTDOWN TIMER	EACH	8
INDUCTIVE LOOP DETECTOR	EACH	2
PEDESTRIAN PUSH-BUTTON	EACH	4
REMOVE ELECTRIC CABLE FROM CONDUIT	FOOT	1559
REMOVE EXISTING TRAFFIC SIGNAL EQUIPMENT	EACH	1
UNINTERRUPTIBLE POWER SUPPLY	EACH	1

CONTROLLER SEQUENCE



CONTROLLER SEQUENCE LEGEND

- DUAL ENTRY PHASE
- SINGLE ENTRY PHASE
- OVERLAP
- NUMBER REFERRING TO ASSOCIATED PHASE
- PEDESTRIAN PHASE

PHASE DESIGNATION DIAGRAM