

FOR INDEX OF SHEETS SEE SHEET NUMBER 2

STATE OF ILLINOIS  
DEPARTMENT OF TRANSPORTATION  
DIVISION OF HIGHWAYS  
**PROPOSED  
HIGHWAY PLANS**  
RESURFACING AND WIDENING  
VILLAGE OF DEERFIELD  
F.A.U. ROUTE 2718 (WILMOT ROAD)  
GORDON TERRACE TO F.A.U. ROUTE 1257 (DEERFIELD ROAD)  
SECTION 07-00080-00-WR  
PROJECT: ARA -8003(870)  
LAKE COUNTY  
C-91-031-08

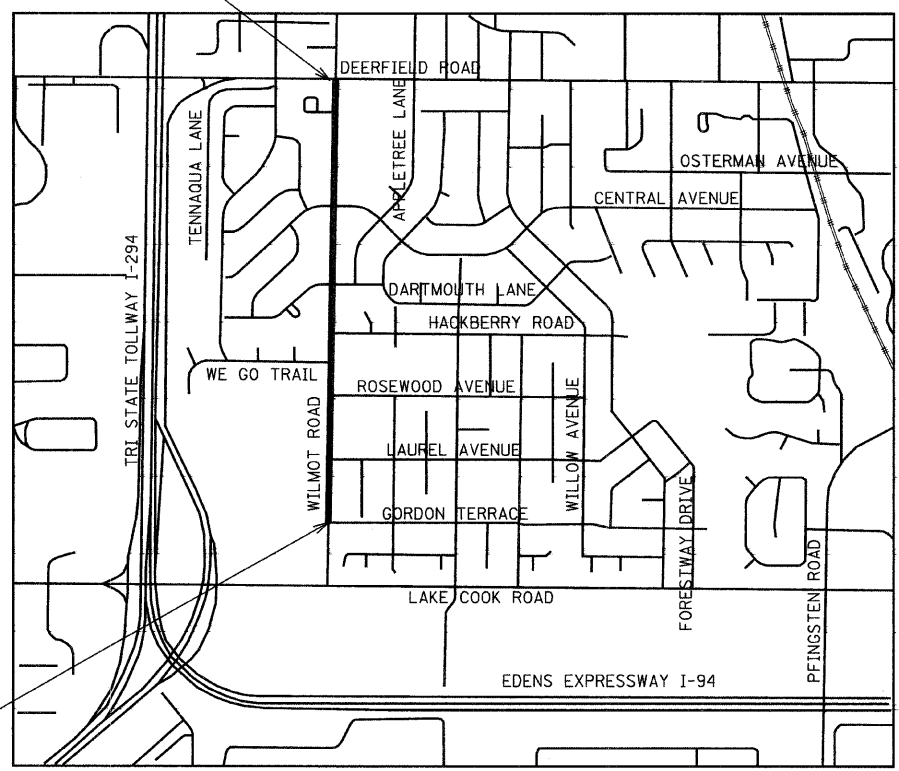
F.A.U. RTE.	SECTION	COUNTY	TOTAL SHEETS	SHEET NO.
2718	07-00080-00-WR	LAKE	1	1
FED. ROAD DIST. NO.		ILLINOIS CONTRACT NO.		63124
55+2=57				

D-91-116-08



LOCATION OF SECTION INDICATED THUS: - [thick line] -

END IMPROVEMENT  
STA. 95 + 69



BEGIN IMPROVMENT  
STA. 50 + 34



T 34 N R 12 E

LOCATION MAP  
1" = 1000'

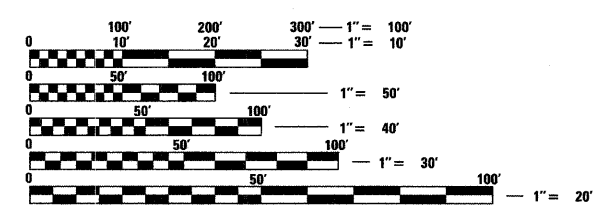
GROSS AND NET LENGTH OF PROJECT = 4,535 FT = 0.86 MI

**DESIGN DESIGNATION**

WILMOT ROAD  
FUNCTIONAL CLASSIFICATION: LOCAL COLLECTOR  
DESIGN SPEED = 30 MPH  
POSTED SPEED = 30 MPH

**TRAFFIC DATA**

EXISTING ADT - 7905 (2008)  
DESIGN ADT - 7905

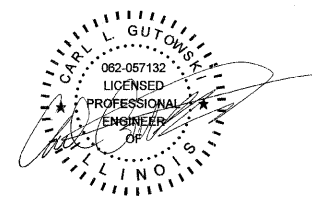


FULL SIZE PLANS HAVE BEEN PREPARED USING STANDARD ENGINEERING SCALES. REDUCED SIZED PLANS WILL NOT CONFORM TO STANDARD SCALES. IN MAKING MEASUREMENTS ON REDUCED PLANS, THE ABOVE SCALES MAY BE USED.

J.U.L.I.E.  
JOINT UTILITY LOCATION INFORMATION FOR EXCAVATION  
1-800-892-0123  
OR 811

CONTRACT NO. 63124

ASSOCIATE FIELD ENGINEER: KEVIN STALLWORTH (847) 705-4169  
CONSULTANT: CIORBA GROUP, INC. (773) 775-4009



DATE: 1/30/2009  
SEAL EXPIRES: 11/30/2009

APPROVED: *[Signature]*  
VILLAGE OF DEERFIELD, VILLAGE ENGINEER

STATE OF ILLINOIS  
DEPARTMENT OF TRANSPORTATION  
DIVISION OF HIGHWAYS

PASSED: FEBRUARY 9, 2009  
*[Signature]*  
DISTRICT ENGINEER OF LOCAL ROAD & STREETS

RELEASING FOR BID  
BASED ON LIMITED REVIEW: FEBRUARY 10, 2009  
*[Signature]*  
DEPUTY DIRECTOR OF HIGHWAYS, REGION 1 ENGINEER

**PRINTED BY THE AUTHORITY  
OF THE STATE OF ILLINOIS**

Ciorba Group, Inc.  
DESIGN FIRM  
REGISTRATION NUMBER  
184-001016  
CONSULTING ENGINEERS  
SUITE 402, 5507 NORTH CUMBERLAND AVE  
CHICAGO, ILLINOIS 60656 :: (773) 775-4009

PLANS PREPARED BY: CIORBA GROUP