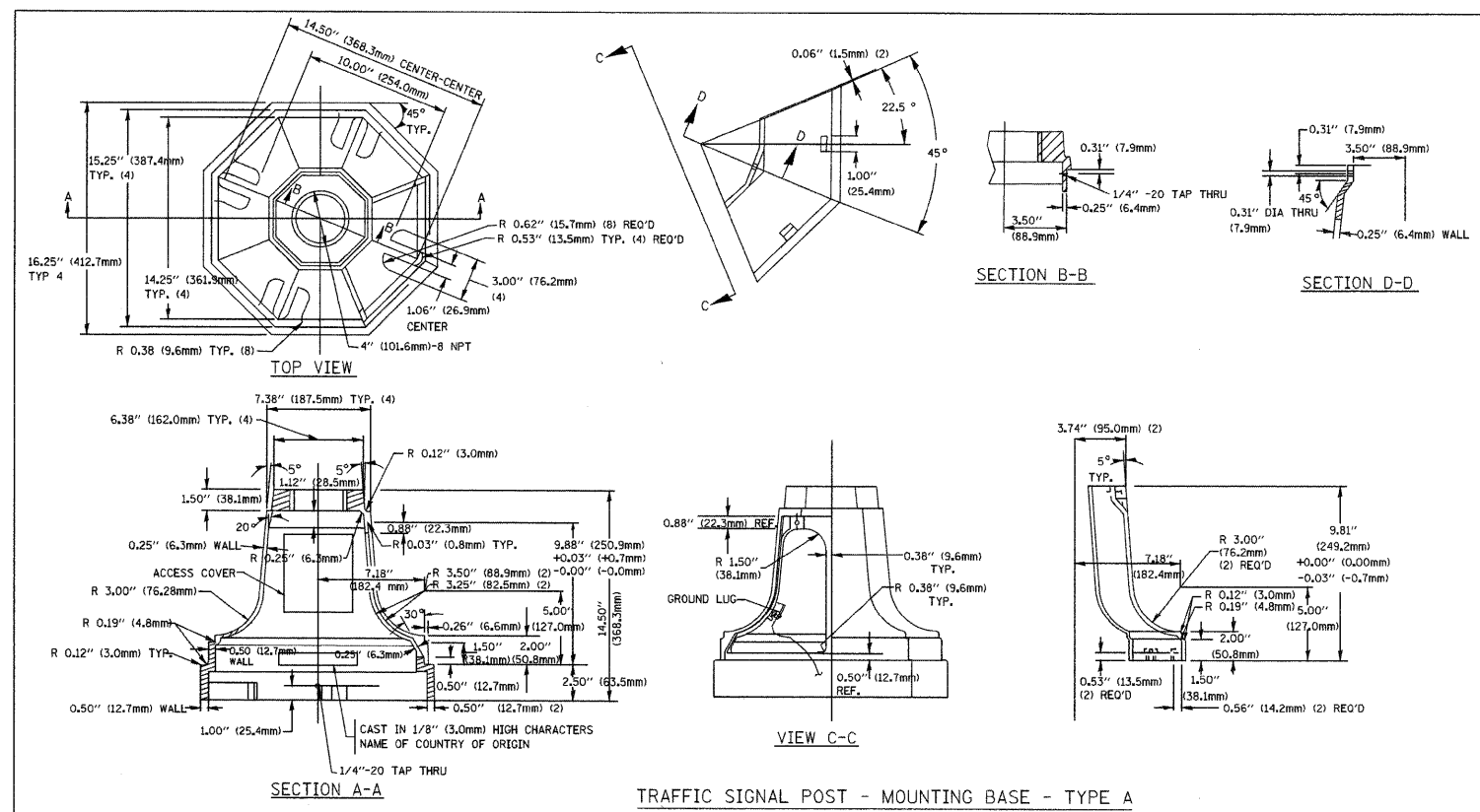
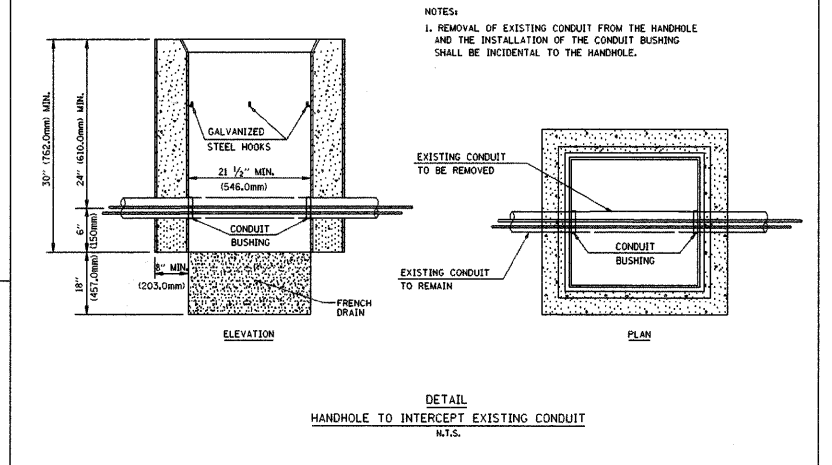
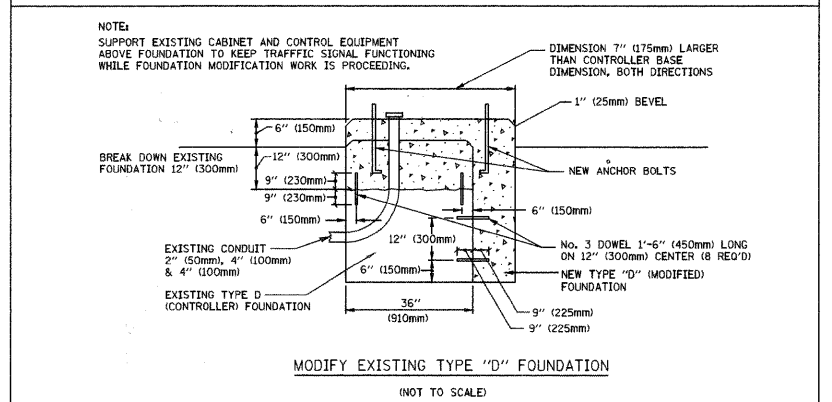
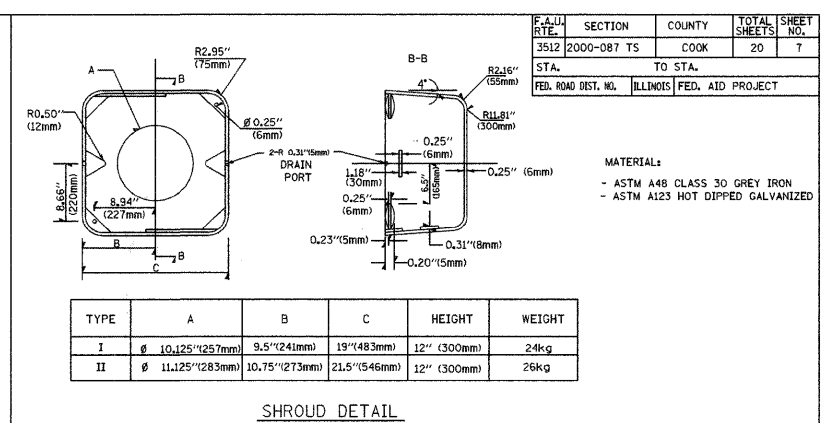
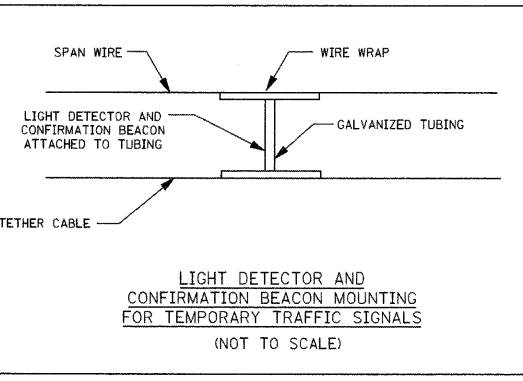
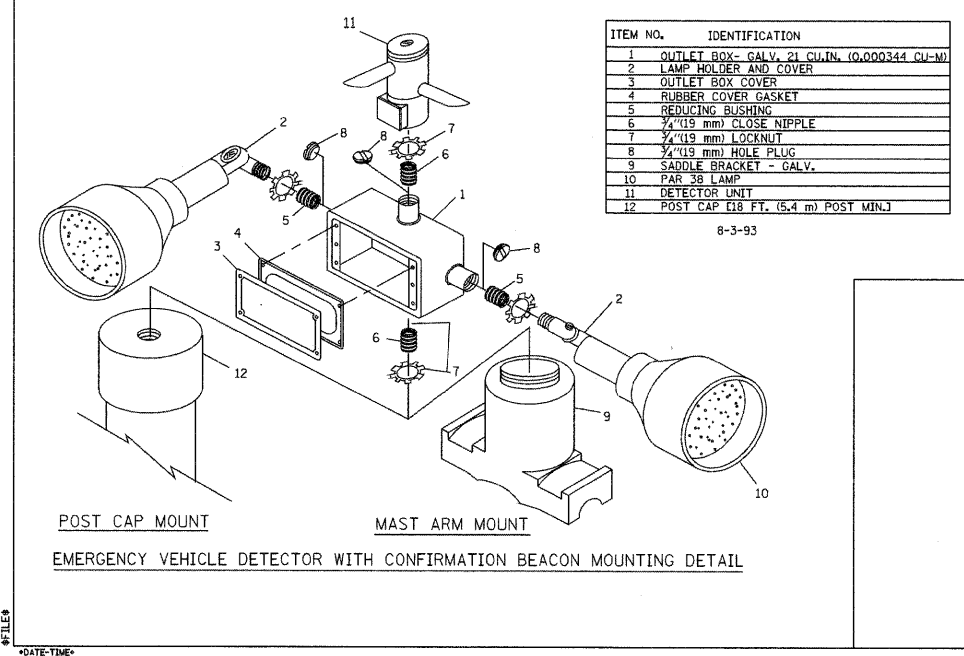


DATE BY DATE BY DATE BY  
 SURVEYED PLOTTED CHECKED  
 PLAN NOTE BOOK NO. FILE NAME  
 HNTB CORPORATION  
 1175 N. STATE STREET  
 CHICAGO, IL 60606  
 TEL: 312-353-9115  
 FAX: 312-353-9116  
 HNTB  
 SURVEYED PLOTTED CHECKED  
 PROFILE NOTE BOOK NO. FILE NAME  
 STRUCTURE NOTATIONS CPWD



ITEM NO.	IDENTIFICATION
1	OUTLET BOX- GALV. 21 CU.IN. (0,000344 CU-M)
2	LAMP HOLDER AND COVER
3	OUTLET BOX COVER
4	RUBBER COVER GASKET
5	REDUCING BUSHING
6	1/2\" (19 mm) CLOSE NIPPLE
7	1/2\" (19 mm) LOCKNUT
8	1/2\" (19 mm) HOLE PLUG
9	SADDLE BRACKET - GALV.
10	PAR. 38 LAMP
11	DETECTOR UNIT
12	POST CAP (18 FT. (5,4 m) POST MIN.)

- NOTES:
- ALL ELECTRICAL ITEMS, EXCEPT ITEMS #2 AND #11 SHALL BE ALUMINUM OR GALVANIZED
  - ITEM #1- OZ/GEDNEY FSX-1-50 OR EQUIVALENT  
 ITEM #2- MULBERRY CON-O-SHADE LAMP SHIELD OR EQUIVALENT  
 ITEM #3- "BAND-IT" SADDLE BRACKET OR EQUIVALENT
  - WHEN POST MOUNTING IS SPECIFIED, ITEM #9 SHALL NOT BE REQUIRED. THE DETECTION UNIT SHALL BE MOUNTED DIRECTLY ON TOP OF THE CAP BY DRILLING AND TAPPING A 1/2\" (19 mm) HOLE WITH PIPE THREADS. THE POST CAP SHALL EITHER BE SCREWED TO THE TOP OF THE POST OR A MINIMUM OF 3 TIGHTENING SCREWS SHALL BE REQUIRED ON EACH CAP.



REVISIONS	NAME	DATE

ILLINOIS DEPARTMENT OF TRANSPORTATION  
 DISTRICT 1  
 STANDARD TRAFFIC SIGNAL  
 DESIGN DETAILS

SCALE: VERT. NONE  
 HORIZ. 1\" = 1'-0\"  
 DATE 1-01-02

DRAWN BY: RWP  
 DESIGNED BY: DAD  
 CHECKED BY: DAZ  
 SHEET 4 OF 4