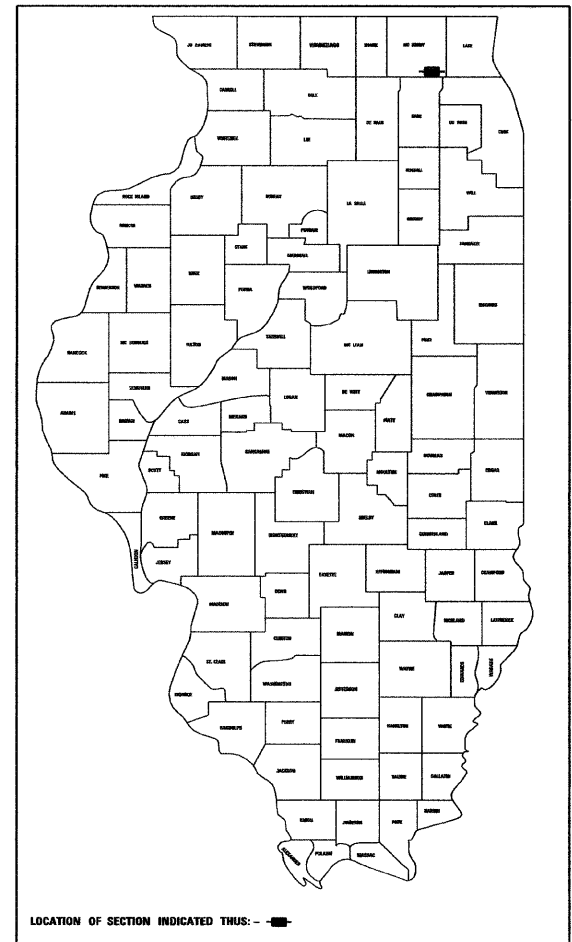


F.A.U. ROUTE NO.	SECTION	COUNTY	TOTAL SHEETS	SHEET NO.
4011	07-00072-00-PV	McHENRY	80	1
ILLINOIS PROJECT				
CONTRACT NO. 63137				

STATE OF ILLINOIS
DEPARTMENT OF TRANSPORTATION
DIVISION OF HIGHWAYS
PLANS FOR PROPOSED
FEDERAL AID HIGHWAY
FAU ROUTE 4011 / HANSON ROAD
EDGEWOOD DRIVE TO HUNTINGTON DRIVE
ROADWAY RECONSTRUCTION
PROJECT CMM - M-9003 (107)
JOB NO. C-91-105-09
SECTION NO. 07-00072-00-PV
VILLAGE OF ALGONQUIN
MCHENRY COUNTY

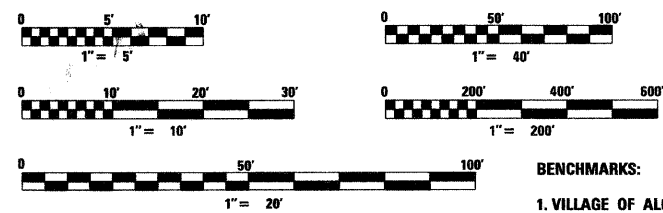


INDEX OF SHEETS

1	TITLE SHEET	19	INTERSECTION GRADING PLAN
2	GENERAL NOTES	20-21	OVERALL UTILITY PLAN
3	SUMMARY OF QUANTITIES	22-34	STORM SEWER PLAN AND PROFILE
4	TYPICAL SECTIONS	35-38	DRAINAGE SCHEDULES
5	ALIGNMENT AND TIES	39-41	RESTORATION AND EROSION CONTROL
6-8	STAGING AND DETOUR PLAN	42-70	CROSS SECTIONS
9-18	EXISTING CONDITIONS/REMOVALS PROPOSED ROADWAY PLAN & PROFILE	71-74	VILLAGE DETAILS
		75-80	DISTRICT ONE STANDARDS

HIGHWAY STANDARDS

- 000001-05 STANDARD SYMBOLS, ABBREVIATIONS, AND PATTERNS
- 280001-04 TEMPORARY EROSION CONTROL SYSTEMS
- 424001-05 CURB RAMPS FOR SIDEWALKS
- 442201-03 CLASS C AND D PATCHING
- 602001-01 CATCH BASIN, TYPE A
- 602301-02 INLET, TYPE A
- 602401-02 MANHOLE, TYPE A
- 602406-03 MANHOLE, TYPE A, 6' DIAMETER
- 602601-02 PRECAST REINFORCED CONCRETE FLAT SLAB TOP
- 602701-02 MANHOLE STEPS
- 604001-03 FRAME AND LIDS, TYPE 1
- 604006-04 FRAME AND GRATE, TYPE 3
- 604011-04 FRAME AND GRATE, TYPE 3V
- 604036-02 GRATE, TYPE 8
- 606001-04 CONCRETE CURB TYPE B AND COMBINATION CONCRETE CURB AND GUTTER
- 630001-08 STEEL PLATE BEAM GUARDRAIL
- 630101-08 GUARDRAIL MOUNTED ON EXISTING CULVERTS
- 630201-06 PCC/HMA STABILIZATION AT STEEL PLATE BEAM GUARDRAILS
- 630301-05 SHOULDER WIDENING FOR TYPE 1(SPECIAL) GUARDRAIL TERMINALS
- 701701-06 URBAN LANE CLOSURE, MULTILANE INTERSECTION
- 701901-01 TRAFFIC CONTROL DEVICES
- 780001-02 TYPICAL PAVEMENT MARKINGS
- BLR 24-2 MAILBOX TURNOUT FOR LOCAL ROADS
- BLR 23-3 TRAFFIC BARRIER TERMINAL TYPE 1
- BD 01 DRIVEWAY DETAILS DISTANCE BETWEEN R.O.W. AND FACE OF CURB & EDGE OF SHOULDER >=15' (4.5 M)
- BD 22 PAVEMENT PATCHING FOR HOT MIX ASPHALT SURFACED PAVEMENT
- BD 32 BUTT JOINT AND HMA PAVEMENT TAPER DETAILS
- BD 34 DETAILS FOR STEEL PLATE BEAM AND GUARD RAIL ADJACENT TO CURB AND GUTTER
- TC 10 TRAFFIC CONTROL AND PROTECTION FOR SIDE SIDE ROADS, INTERSECTIONS, AND DRIVEWAYS
- TC 13 DISTRICT 1 TYPICAL PAVEMENT MARKINGS

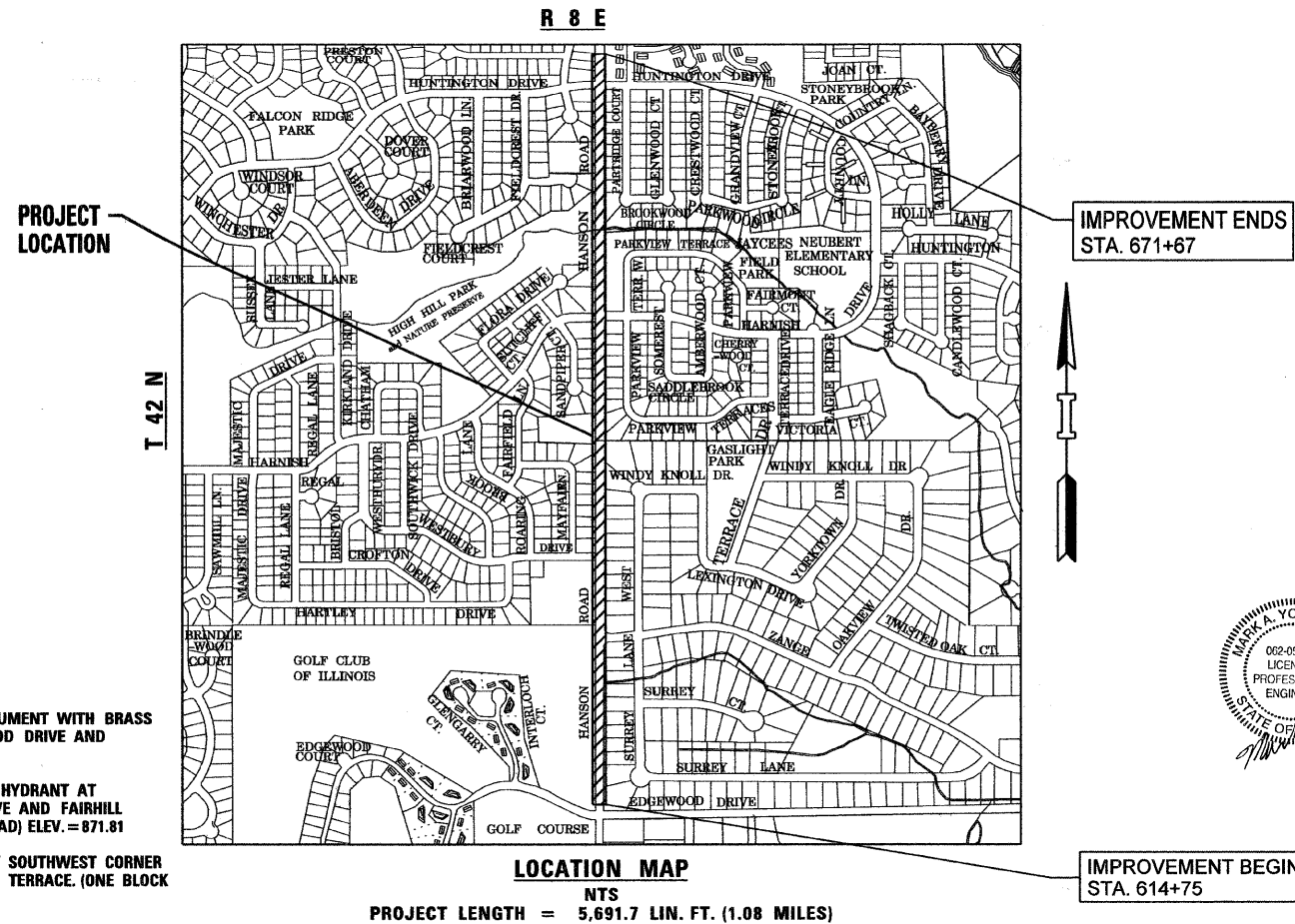


BENCHMARKS:

1. VILLAGE OF ALGONQUIN CONCRETE MONUMENT WITH BRASS CAP AT SOUTHWEST CORNER OF EDGEWOOD DRIVE AND HANSON ROAD ELEV.=862.31
2. SOUTHEAST TOP FLANGE BOLT ON FIRE HYDRANT AT NORTHEAST CORNER OF HUNTINGTON DRIVE AND FAIRHILL COURT. (ONE BLOCK WEST OF HANSON ROAD) ELEV.=871.81
3. TOP FLANGE BOLT ON FIRE HYDRANT AT SOUTHWEST CORNER OF HARNISH DRIVE AND WEST PARKVIEW TERRACE. (ONE BLOCK EAST OF HANSON ROAD) ELEV.=861.17

**FOR UNDERGROUND UTILITY LOCATIONS
CALL J.U.L.I.E. (TOLL FREE 1-800-892-0123)
48 HOURS PRIOR TO CONSTRUCTION**

CONTRACT NO. 63137



TRAFFIC DATA

6,800 (2006) ADT
10,000 (2030) ADT
POSTED SPEED LIMIT 40 MPH

STATE OF ILLINOIS
DEPARTMENT OF TRANSPORTATION
DIVISION OF HIGHWAYS

APPROVED 3/31 2009

 VILLAGE OF ALGONQUIN

PASSED APRIL 06 2009

 DISTRICT 1 ENGINEER OF LOCAL ROADS AND STREETS

RELEASING FOR BID APRIL 07 2009
 BASED ON LIMITED REVIEW

 DEPUTY DIRECTOR OF HIGHWAYS, REGION 1 ENGINEER



LIC. EX. 11/30/09

IMPROVEMENT BEGINS
STA. 614+75



GRAEF, ANHALT, SCHLOEMER & ASSOCIATES, INC.
CONSULTING ENGINEERS AND LAND SURVEYORS
8501 W. Higgins Road, Suite 280
Chicago, Illinois 60631
(773) 399-0112

**PRINTED BY THE
AUTHORITY OF THE
STATE OF ILLINOIS**

I.D.O.T. FEDERAL-AID DESIGN ENGINEER: KEVIN STALLWORTH P.E. (847) 705-4169