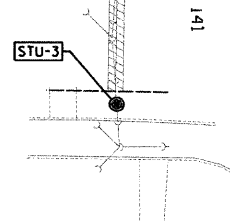


NOTE: GENERAL LOCATIONS OF ALL UTILITY WORK ARE SHOWN ABOVE. FOR DETAILED UTILITY LOCATIONS SEE UTILITY PLAN AND PROFILE SHEETS.



LEGEND

- - - - - EXISTING SANITARY SEWER
- - - - - EXISTING WATER MAIN
- - - - - EXISTING STORM SEWER
- - - - - EXISTING GAS MAIN
- - - - - EXISTING OVERHEAD
- - - - - EXISTING CABLE T.V.
- - PROPOSED INLET
- - PROPOSED CATCH BASIN
- - PROPOSED MANHOLE
- ▲ - PROPOSED FIRE HYDRANT
- - PROPOSED VALVE VAULT
- - - - - PROPOSED STORM SEWER
- - - - - PROPOSED SANITARY SEWER
- DM-B - PROPOSED STORM SEWER STRUCTURE NUMBER

REVISIONS	
NAME	DATE

HANSON ROAD IMPROVEMENTS
EDGEWOOD DRIVE TO HUNTINGTON DRIVE

OVERALL UTILITY PLAN

DRAWN BY: AJR
CHECKED BY: MAY

DATE: 03-27-09

GRAEF, ANHALT, SCHLOEMER & ASSOCIATES, INC.
CHICAGO, ILLINOIS