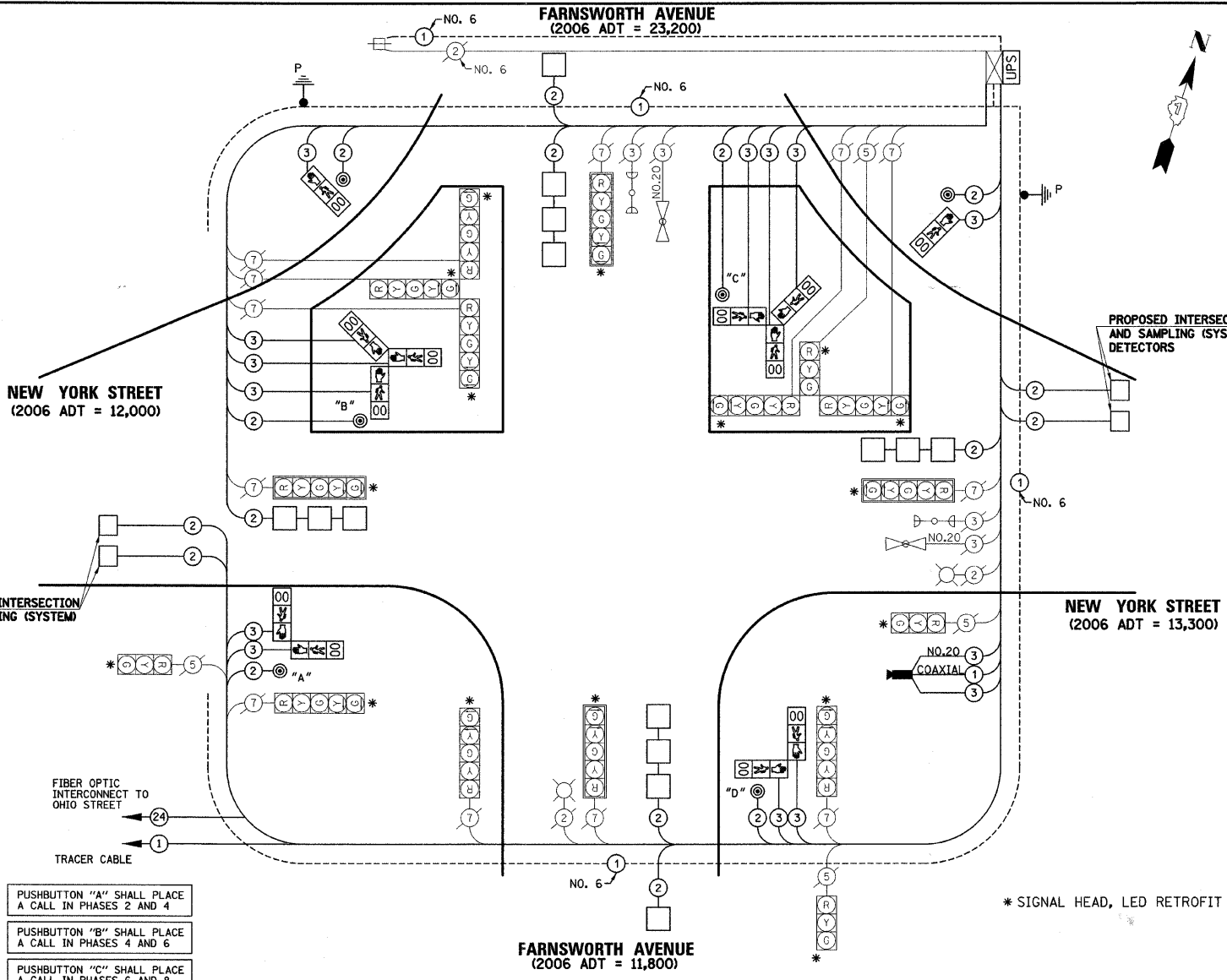


CABLE PLAN LEGEND

EXISTING	PROPOSED	DESCRIPTION
		8" (200mm) TRAFFIC SIGNAL SECTION
		12" (300mm) TRAFFIC SIGNAL SECTION
		12" (300mm) PEDESTRIAN SIGNAL SECTION
		12" (300mm) PEDESTRIAN SIGNAL SECTION
		CONTROLLER CABINET
		SERVICE INSTALLATION
		TELEPHONE INSTALLATION
		VEHICLE DETECTOR, INDUCTION LOOP
		MAGNETIC DETECTOR
		EMERGENCY VEHICLE LIGHT DETECTOR
		CONFIRMATION BEACON
		PUSHBUTTON DETECTOR
		LUMINAIRE
		DENOTES NUMBER OF CONDUCTORS. ALL CABLE NO. 14 EXCEPT AS INDICATED. ALL LOOP DETECTOR CABLE TO BE SHIELDED.
		GROUND CABLE IN CONDUIT NO. 6 SOLID COPPER (GREEN)
		FIBER OPTIC CABLE IN CONDUIT NO. 62.5/125 2-MM12F SMI2F
		SIGNAL FACE WITH BACKPLATE. "P" INDICATES PROGRAMMED HEAD.
		RAILROAD CONTROL CABINET
		ILLUMINATED SIGN "NO LEFT TURN"
		ILLUMINATED SIGN "NO RIGHT TURN"
		WIRELESS ANTENNA
		GROUND ROD AT HANDHOLE (H), DOUBLE HANDHOLE (H), OR CONTROLLER (C)
		GROUND ROD AT POST (P) OR MAST ARM POLE (MA)
		GROUND ROD AT ELECTRIC SERVICE INSTALLATION
		UNINTERRUPTIBLE POWER SUPPLY
		LED STREET NAME SIGN
		VIDEO DETECTION CAMERA
		PAN/TILT/ZOOM CAMERA



SCHEDULE OF QUANTITIES

PAY ITEM DESCRIPTION	UNIT	FARNSWORTH AVENUE
DETECTABLE WARNINGS	SQ FT	87
MANHOLES TO BE ADJUSTED	EACH	1
THERMOPLASTIC PAVEMENT MARKING - LINE 6"	FOOT	626
THERMOPLASTIC PAVEMENT MARKING - LINE 24"	FOOT	177
PAVEMENT MARKING REMOVAL	SQ FT	523
CONDUIT IN TRENCH, 2" DIA., GALVANIZED STEEL	FOOT	414
CONDUIT IN TRENCH, 2 1/2" DIA., GALVANIZED STEEL	FOOT	11
CONDUIT PUSHED, 2" DIA., GALVANIZED STEEL	FOOT	75
HANDHOLE	EACH	2
TRENCH AND BACKFILL FOR ELECTRICAL WORK	FOOT	606
MAINTENANCE OF EXISTING TRAFFIC SIGNAL INSTALLATION	EACH	1
ELECTRIC CABLE IN CONDUIT, SIGNAL NO. 14 2C	FOOT	917
ELECTRIC CABLE IN CONDUIT, SIGNAL NO. 14 3C	FOOT	2183.5
ELECTRIC CABLE IN CONDUIT, LEAD-IN, NO. 14 1 PAIR	FOOT	3073
TRAFFIC SIGNAL POST, GALVANIZED STEEL 10 FT.	EACH	2
CONCRETE FOUNDATION, TYPE A	FOOT	8
DRILL EXISTING HANDHOLE	EACH	21
PEDESTRIAN SIGNAL HEAD, LED, 1-FACE, BRACKET MOUNTED WITH COUNTDOWN TIMER	EACH	2
PEDESTRIAN SIGNAL HEAD, LED, 2-FACE, BRACKET MOUNTED WITH COUNTDOWN TIMER	EACH	2
INDUCTIVE LOOP DETECTOR	EACH	10
DETECTOR LOOP, TYPE I	FOOT	897.2
PEDESTRIAN PUSH-BUTTON	EACH	6
REMOVE ELECTRIC CABLE FROM CONDUIT	FOOT	1830
REMOVE EXISTING TRAFFIC SIGNAL EQUIPMENT	EACH	1
ISLAND PAVEMENT REMOVAL AND REPLACEMENT	SQ FT	575
UNINTERRUPTIBLE POWER SUPPLY	EACH	1
ELECTRIC CABLE IN CONDUIT, GROUNDING, NO. 6 1C	FOOT	829.5
SIDEWALK REMOVAL AND REPLACEMENT	SQ FT	68
VIDEO BELDEN 8281 COAXIAL CABLE IN CONDUIT	FOOT	204
ELECTRIC CABLE IN CONDUIT, NO. 20 3C TWISTED SHIELDED	FOOT	204
GROUND EXISTING HANDHOLE FRAME AND COVER	EACH	8
INTERSECTION VIDEO TRAFFIC MONITORING SYSTEM WITH PTZ CAMERA	EACH	1
SIGNAL HEAD, LED, 3-SECTION, BRACKET MOUNTED, RETROFIT	EACH	4
SIGNAL HEAD, LED, 5-SECTION, BRACKET MOUNTED, RETROFIT	EACH	8
SIGNAL HEAD, LED, 5-SECTION, MAST ARM MOUNTED, RETROFIT	EACH	4
PEDESTRIAN SIGNAL HEAD, LED, 3-FACE, BRACKET MOUNTED WITH COUNTDOWN TIMER	EACH	2

DATE	BY
DATE	BY

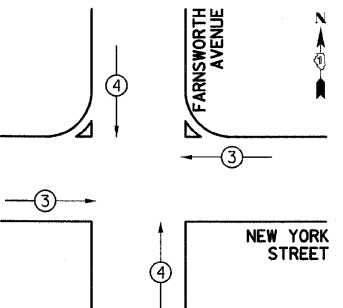
DATE	BY
DATE	BY

I.D.O.T TRAFFIC SIGNAL INSTALLATION ELECTRICAL SERVICE REQUIREMENTS					
TYPE	NO. LAMPS	WATTAGE		% OPERATION	TOTAL WATTAGE
		INCAND.	LED		
SIGNAL (RED)	16		17	0.50	136
(YELLOW)	16		25	0.25	100
(GREEN)	16		15	0.25	60
ARROW	24		12	0.10	28.8
PED. SIGNAL	12		25	1.00	200
CONTROLLER	1		100	1.00	100
UPS	1		25	1.00	25
LUMINAIRE	2		250	0.50	250
TOTAL =					899.8

ENERGY COSTS TO: CITY OF AURORA
44 E. DOWNER PLACE
AURORA, ILLINOIS 60507-2067

ENERGY SUPPLY CONTACT: MARK SCHERIBEL
PHONE: (630) 723-2128
COMPANY: COMMONWEALTH EDISON

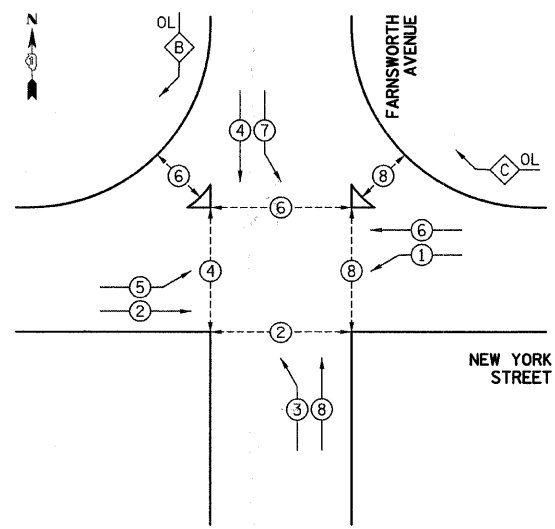
PUSHBUTTON "A" SHALL PLACE A CALL IN PHASES 2 AND 4
PUSHBUTTON "B" SHALL PLACE A CALL IN PHASES 4 AND 6
PUSHBUTTON "C" SHALL PLACE A CALL IN PHASES 6 AND 8
PUSHBUTTON "D" SHALL PLACE A CALL IN PHASES 8 AND 2



FOUNDATION (DEPTH)	FT. (m)	CABLE SLACK	FT. (m)	VERTICAL	FT. (m)
TYPE A - POST	4 (1.2)	HANDHOLE	6.5 (2.0)	ALL FOUNDATIONS	3.5 (1.0)
C - CONTROLLER	4 (1.2)	DOUBLE HANDHOLE	13 (4.0)	MAST ARM (L) POLE	20'+L-2=(6m+L-0.6m)
D - CONTROLLER	4 (1.2)	SIGNAL POST	2 (1.0)		
E - M.A. LENGTH		CONTROLLER CAB.	1 (0.5)	BRACKET MOUNTED	13 (4.0)
<30'	30" (900mm)	FIBER OPTIC	13 (4.0)	PED. PUSHBUTTON	4 (1.2)
<40'	30" (750mm)	ELECTRIC SERVICE	1 (0.5)	ELECTRIC SERVICE	13.5 (4.1)
<40'	36" (900mm)	GROUND CABLE	1 (0.5)	SERVICE TO GROUND	13.5 (4.1)
<50'	36" (900mm)			POST MOUNTED	6 (1.8)
>50'	36" (900mm)				

PROPOSED EMERGENCY VEHICLE PREEMPTORS		
PROPOSED EMERGENCY VEHICLE PREEMPTORS	3	4
MOVEMENT	←	↑

CONTROLLER SEQUENCE



OVERLAP PHASE	PERMISSIVE PHASE	PROTECTED PHASE
B	= 4	+ 5
C	= 6	+ 7

CONTROLLER SEQUENCE LEGEND	
	DUAL ENTRY PHASE
	SINGLE ENTRY PHASE
	OVERLAP
	NUMBER REFERRING TO ASSOCIATED PHASE
	PEDESTRIAN PHASE