

F.A. RTE.	SECTION	COUNTY	TOTAL SHEETS	SHEET NO.
0360	08-00279-00-RS	KANE	12	1
FED. ROAD DIST. NO.	ILLINOIS	CONTRACT NO.	63155	

**INDEX OF SHEETS**

- 1 COVER SHEET
- 2 GENERAL NOTES & HIGHWAY STANDARDS
- 3 SUMMARY OF QUANTITIES
- 4 TYPICAL SECTIONS
- 5-7 ROADWAY PLAN
- 8-12 CONSTRUCTION DETAILS

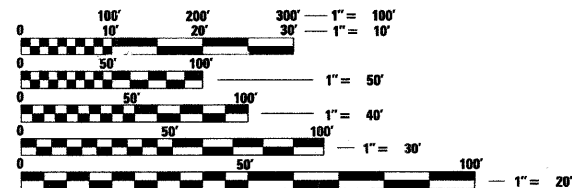
**STATE OF ILLINOIS  
DEPARTMENT OF TRANSPORTATION  
DIVISION OF HIGHWAYS**

# PLANS FOR PROPOSED FEDERAL AID HIGHWAY

**FARNSWORTH AVENUE F.A.P. ROUTE 0360  
FROM RECKINGER ROAD TO MOLITOR ROAD  
RESURFACING  
SECTION NO.: 08-00279-00-RS  
PROJECT NO.: ARA-9003 (252)  
JOB NO.: C-91-365-09  
CITY OF AURORA  
KANE COUNTY**

**TRAFFIC DATA**

FARNSWORTH AVENUE (F.A.P. 0360)  
POSTED SPEED LIMIT = 35 MPH  
DESIGN SPEED LIMIT = 35 MPH  
2008 ADT = 20,400  
DESIGN DESIGNATION: COLLECTOR



FULL SIZE PLANS HAVE BEEN PREPARED USING STANDARD ENGINEERING SCALES. REDUCED SIZED PLANS WILL NOT CONFORM TO STANDARD SCALES. IN MAKING MEASUREMENTS ON REDUCED PLANS, THE ABOVE SCALES MAY BE USED.

**J.U.L.I.E.**  
JOINT UTILITY LOCATION INFORMATION FOR EXCAVATION  
CALL 811

Know what's below.  
Call before you dig.

Illinois Professional Design Firm # 184-000108

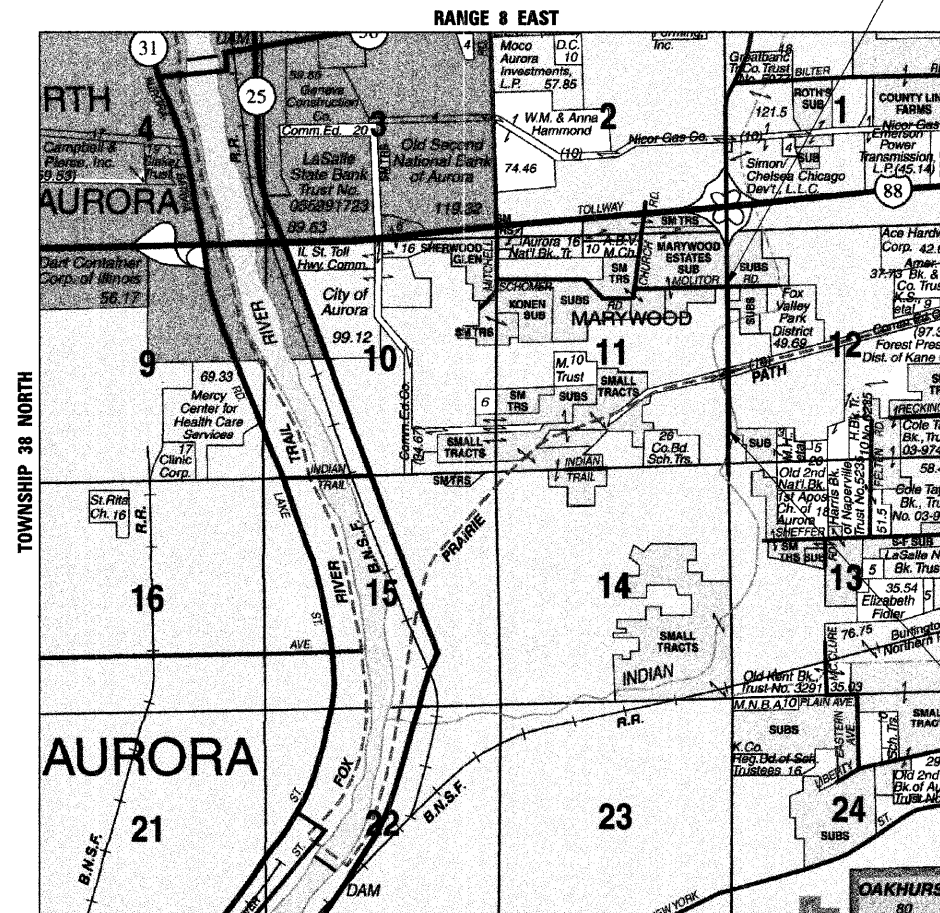
**SEC Group, Inc.**  
Engineering  
Surveying  
Planning  
Landscape Architecture

McHenry • Yorkville • New Lenox • Chicago  
www.secgroupinc.com

**PROJECT ENGINEER: JEFFREY STRZALKA, P.E.**  
**PROJECT MANAGER: AKRAM CHAUDHRY, P.E.**

**CONTRACT NO. 63155**

**PROJECT LOCATION MAP  
(NOT TO SCALE)**



**PROJECT LENGTH**

NET LENGTH OF IMPROVEMENT = 2,913 FT (0.55 MI)  
GROSS LENGTH OF PROJECT = 2,913 FT (0.55 MI)



**STATE OF ILLINOIS  
DEPARTMENT OF TRANSPORTATION  
DIVISION OF HIGHWAYS**

APPROVED 4-7 20 09  
*Chris E. List*  
LOCAL AGENCY REPRESENTATIVE

PASSED APRIL 09 20 09  
*Chris E. List*  
DISTRICT 1 ENGINEER OF LOCAL ROADS AND STREETS

RELEASING FOR BID BASED ON LIMITED REVIEW APRIL 09 20 09  
*Diana M. O'Keefe*  
DEPUTY DIRECTOR OF HIGHWAYS, REGION 1 ENGINEER

**PROFESSIONAL ENGINEER'S SIGN & SEAL**

**PRINTED BY THE AUTHORITY  
OF THE STATE OF ILLINOIS**

FIELD ENGINEER: MARILIN SOLOMON (847) 705-4407

COMPANY NAME: Smith  
PROJECT CONTACT: #PROJECT CONTACT  
DATE PLOTTED: 4/27/09 10:26:00 PM  
FILE NAME: 080530-CVT-001  
PLOT DRIVER: McHenry-1050-plott11r-45.LS.plt  
PEN TABLE: standard-trans.tbl

**GENERAL NOTES**

- ALL REFERENCES TO "STANDARD SPECIFICATIONS" IN THESE GENERAL NOTES SHALL BE INTERPRETED TO MEAN "STANDARD SPECIFICATIONS FOR ROAD AND BRIDGE CONSTRUCTION" ADOPTED BY THE ILLINOIS DEPARTMENT OF TRANSPORTATION, JANUARY 1, 2007.
- ALL REFERENCES TO "ENGINEER" SHALL BE INTERPRETED TO MEAN THE RESIDENT ENGINEER.
- IT IS THE CONTRACTOR'S RESPONSIBILITY TO ASCERTAIN EXISTING FIELD CONDITIONS PRIOR TO BIDDING ON THE PROJECT.
- BEFORE STARTING ANY EXCAVATION, THE CONTRACTOR SHALL CALL "JULIE" (JOINT UTILITY LOCATION INFORMATION FOR EXCAVATION) AT 1-800-892-0123 AND THE CITY OF AURORA AT (630) 844-3621 FOR FIELD LOCATIONS OF BURIED UTILITIES (48 HOURS NOTIFICATION IS REQUIRED).
- THE CONTRACTOR WILL NOT BE ALLOWED TO SET UP A YARD OR FIELD OFFICE ON STATE OR CITY PROPERTY WITHOUT WRITTEN PERMISSION FROM THE DEPARTMENT OR CITY.
- SAW CUTTING OF PAVEMENTS, SIDEWALK, ETC. SHALL BE TO FULL DEPTH AND SHALL RESULT IN A CLEAN STRAIGHT EDGE ON THE PORTION REMAINING. ALL SAW CUTTING SHALL BE CONSIDERED INCLUDED IN THE ITEM REMOVED.
- THE CONTRACTOR SHALL PROTECT AND CAREFULLY PRESERVE ALL SECTION OR SUBSECTION MONUMENTS, PROPERTY CORNERS, AND REFERENCE MARKERS UNTIL THE OWNER, HIS AGENT, OR AN AUTHORIZED SURVEYOR HAS WITNESSED OR OTHERWISE REFERENCED THEIR LOCATIONS.
- OFFSET LOCATIONS GIVEN IN THE PLANS FOR STRUCTURES, EDGE OF PAVEMENT, ETC. ARE FROM THE ROADWAY CENTERLINE.
- BUTT JOINTS WILL BE INSTALLED AT THE ENDS OF ALL RESURFACING (WHERE RESURFACING MEETS EXISTING PAVEMENT), IN ACCORDANCE WITH THE BUTT JOINT AND HOT-MIX ASPHALT TAPER DETAILS SHEET INCLUDED IN THE PLANS, UNLESS OTHERWISE SPECIFIED.
- THE BITUMINOUS MATERIAL PRIME COAT QUANTITIES HAVE BEEN DETERMINED USING A RATE OF 0.10 GAL/SO-YD.
- THE AGGREGATE PRIME COAT QUANTITIES HAVE BEEN DETERMINED USING A RATE OF 4 LBS/SO-YD.
- QUANTITIES FOR PATCHING SHALL NOT EXCEED THOSE PROVIDED IN THE SUMMARY OF QUANTITIES UNLESS APPROVED BY THE ENGINEER. THE ENGINEER WILL IDENTIFY FINAL PATCH LOCATIONS IN THE FIELD.
- THE CONTRACTOR SHALL NOTIFY IDOT BUREAU OF MATERIALS AT (847) 705-4337 AT LEAST 24 HOURS PRIOR TO THE PLACEMENT OF HOT-MIX ASPHALT OR CONCRETE.
- FOR STEEL BARS CERTIFICATION, CONTACT IDOT BUREAU OF MATERIALS AT (847) 705-4337.

**STORM SEWERS, WATER MAINS, AND UTILITIES**

- THE CONTRACTOR SHALL BE RESPONSIBLE FOR CONTACTING THE OWNERS OF ALL UTILITIES PRIOR TO CONSTRUCTION TO DETERMINE THE LOCATION OF ALL UTILITY EQUIPMENT. THE CONTRACTOR SHALL COOPERATE WITH ALL UTILITY OWNERS IN ACCORDANCE WITH THE STANDARD SPECIFICATIONS IF UTILITY RELOCATION, ADJUSTMENT, OR PROTECTION IS NECESSARY.
- THE LOCATION OF EXISTING DRAINAGE STRUCTURES, STORM SEWERS, WATER MAINS, SANITARY SEWERS, AND ANY OTHER PUBLIC UTILITIES AS SHOWN ON THE PLANS IS APPROXIMATE AND THEIR EXACT LOCATION IS TO BE DETERMINED IN THE FIELD BY THE CONTRACTOR. THIS WORK SHALL BE CONSIDERED AS INCLUDED IN THE UNIT BID PRICES OF THE CONTRACT, AND NO ADDITIONAL COMPENSATION WILL BE ALLOWED.
- THE CONTRACTOR SHALL BE RESPONSIBLE FOR THE PROTECTION OF ALL UNDERGROUND AND SURFACE UTILITIES EVEN THOUGH THEY MIGHT NOT BE SHOWN ON THE PLANS. ANY UTILITY PROPERTY DAMAGED DURING CONSTRUCTION SHALL BE REPAIRED OR REPLACED TO THE SATISFACTION OF THE OWNER AT THE CONTRACTOR'S EXPENSE.
- ALL UTILITY COMPANIES SHALL BE NOTIFIED AT LEAST 3 DAYS PRIOR TO THE START OF CONSTRUCTION.

**GENERAL NOTES (CONTINUED)**

- THE CONTRACTOR SHALL USE ALL NECESSARY PRECAUTIONS AND PROTECTION MEASURES REQUIRED TO MAINTAIN EXISTING UTILITIES, SEWERS, AND APPURTENANCES THAT MUST BE KEPT IN OPERATION.
- THE CONTRACTOR SHALL ENSURE THAT ALL WATER SYSTEM VALVES, VALVE VAULTS, AND SANITARY SEWER MANHOLES REMAIN READILY ACCESSIBLE TO THE CITY FOR EMERGENCY OPERATIONS. THE LOCATIONS OF ALL WATER AND SANITARY FACILITIES SHALL BE MARKED AND READILY VISIBLE AT ALL TIMES.

7. ANY LOOSE MATERIAL DEPOSITED IN THE FLOWLINE OF DRAINAGE STRUCTURES, WHICH OBSTRUCTS THE NATURAL FLOW OF WATER SHALL BE REMOVED AT THE CLOSE OF EACH WORKING DAY. PRIOR TO ACCEPTANCE OF THE IMPROVEMENT, ALL DRAINAGE STRUCTURES SHALL BE FREE OF DIRT AND DEBRIS. THIS WORK WILL NOT BE PAID FOR SEPARATELY, BUT SHALL BE CONSIDERED AS INCLUDED IN THE UNIT BID PRICES OF THE CONTRACT.

**SIGNING AND STRIPING**

- SEE IDOT STANDARD DETAIL 780001. DISTRICT ONE DETAIL AND PLAN SHEETS FOR PAVEMENT MARKING DETAILS.
- ALL EXISTING SIGNS LOCATED ON UTILITY/LIGHT POLES TO REMAIN THAT DO NOT CONFLICT WITH THE IMPROVEMENTS SHALL REMAIN IN PLACE UNLESS DIRECTED BY THE ENGINEER.
- SIGNS SHALL NOT BE MOVED OR COVERED UNTIL PROGRESS OF WORK NECESSITATES IT.

4. THE CONTRACTOR WILL BE REQUIRED TO TEMPORARILY RESET ALL SUCH SIGNS THAT INTERFERE WITH CONSTRUCTION OPERATIONS. ALL SUCH SIGNS MUST BE MAINTAINED STRAIGHT AND CLEAN FOR THE DURATION OF THE TEMPORARY SETTING AND MUST BE RE-ERECTED AT A TEMPORARY LOCATION IN A WORKMANLIKE MANNER AND BE VISIBLE TO THE TRAFFIC FOR WHICH IT IS INTENDED. THIS WORK WILL NOT BE PAID FOR SEPARATELY, BUT SHALL BE INCLUDED IN THE UNIT BID PRICES OF THE CONTRACT.

- ALL SIGNS SHALL BE INSTALLED OR RELOCATED IN PERMANENT LOCATIONS AS THE ROADWAY IS COMPLETED. THIS WORK SHALL BE PAID FOR USING THE APPROPRIATE PAY ITEMS.
- ALL REMOVED SIGNS SHALL BE RETURNED TO THE STATE OR CITY AS APPLICABLE.

**TRAFFIC CONTROL**

- SEE TRAFFIC CONTROL PLANS AND GENERAL NOTES CONCERNING TRAFFIC CONTROL AND PROTECTION.

**HIGHWAY STANDARDS**

- 000001-05 STANDARD SYMBOLS, ABBREVIATIONS, AND PATTERNS
- 424001-05 CURB RAMPS FOR SIDEWALKS
- 442201-03 CLASS C AND D PATCHES
- 6060-1-04 CONCRETE CURB TYPE B AND COMBINATION CONCRETE CURB AND CUTTER
- 701602-04 URBAN LANE CLOSURE, MULTILANE, 2W WITH BIDIRECTIONAL LEFT TURN LANE
- 701701-06 URBAN LANE CLOSURE, MULTILANE INTERSECTION
- 701801-04 LANE CLOSURE MULTILANE 1W OR 2W CROSSWALK OR SIDEWALK CLOSURE
- 701901-01 TRAFFIC CONTROL DEVICES
- 780001-02 TYPICAL PAVEMENT MARKINGS
- 886001-01 DETECTOR LOOP INSTALLATIONS
- 886006-01 TYPICAL LAYOUTS FOR DETECTION LOOPS

**DISTRICT ONE DETAILS**

- TC-10 TRAFFIC CONTROL AND PROTECTION FOR SIDE ROADS, INTERSECTIONS, AND DRIVEWAYS
- TC-13 DISTRICT ONE TYPICAL PAVEMENT MARKINGS
- BD-8 DETAILS FOR FRAMES AND LIDS ADJUSTMENT WITH MILLING
- BD-32 BUTT JOINT AND HMA TAPER DETAILS

CITY OF AURORA

GENERAL NOTES AND HIGHWAY STANDARDS

SCALE: NONE SHEET NO. 1 OF 1 SHEETS STA. NA TO STA. NA

F.A. RTE.	SECTION	COUNTY	TOTAL SHEETS	SHEET NO.
0360	08-00279-00-RS	KANE	12	2
FED. ROAD DIST. NO.			ILLINOIS FED. AID PROJECT	
			CONTRACT NO. 63155	

**SEC Group, Inc.**  
 Engineering  
 Surveying  
 Planning  
 Landmarks Architecture  
 McHenry • Yorkville • New Lenox • Chicago  
 www.secgroupinc.com

USER NAME = jst-zelko	DESIGNED - JJS	REVISED -
	DRAWN - JJS	REVISED -
PLOT SCALE = NONE	CHECKED - AC	REVISED -
PLOT DATE = 2/16/2009	DATE - 2/16/09	REVISED -

**SUMMARY OF QUANTITIES**

CODE NUMBER	PAY ITEM DESCRIPTION	UNITS	ROADWAY 1000
40600100	BITUMINOUS MATERIALS (PRIME COAT)	GALLON	2,055
40600300	AGGREGATE (PRIME COAT)	TON	45
40600635	LEVELING BINDER (MACHINE METHOD), N70	TON	1,830
40603340	HOT-MIX ASPHALT SURFACE COURSE, MIX "D", N70	TON	1,870
42300400	PORTLAND CEMENT CONCRETE DRIVEWAY PAVEMENT, 8 INCH	SQ YD	525
42400800	DETECTABLE WARNINGS	SQ FT	120
44000160	HOT-MIX ASPHALT SURFACE REMOVAL, 2 3/4 INCH	SQ YD	21,580
44000200	DRIVEWAY PAVEMENT REMOVAL	SQ YD	525
44001700	COMBINATION CONCRETE CURB AND GUTTER REMOVAL AND REPLACEMENT	FOOT	5,830
44004610	SIDEWALK REMOVAL AND REPLACEMENT (SPECIAL)	SQ FT	585
60251500	CATCH BASINS TO BE ADJUSTED WITH NEW TYPE 11 FRAME AND GRATE	EACH	2
60255800	MANHOLES TO BE ADJUSTED WITH NEW TYPE 1 FRAME, CLOSED LID	EACH	8
60261300	INLETS TO BE ADJUSTED WITH NEW TYPE 11 FRAME AND GRATE	EACH	9
60266600	VALVE BOXES TO BE ADJUSTED	EACH	3
67100100	MOBILIZATION	LSUM	1
70106810	CHANGEABLE MESSAGE SIGN, SPECIAL	CAL MO	2
70101700	TRAFFIC CONTROL AND PROTECTION	LSUM	1
70300100	SHORT-TERM PAVEMENT MARKING	FOOT	3,225
70300510	PAVEMENT MARKING TAPE, TYPE III - LETTERS AND SYMBOLS	SQ FT	240
70300520	PAVEMENT MARKING TAPE, TYPE III - 4 INCH	FOOT	800
70300540	PAVEMENT MARKING TAPE, TYPE III - 6 INCH	FOOT	40
70300560	PAVEMENT MARKING TAPE, TYPE III - 12 INCH	FOOT	280
70300570	PAVEMENT MARKING TAPE, TYPE III - 24 INCH	FOOT	70
* 78000100	THERMOPLASTIC PAVEMENT MARKING, LETTERS AND SYMBOLS	SQ FT	280
* 78000200	THERMOPLASTIC PAVEMENT MARKING, LINE 4 INCH	FOOT	9,880
* 78000400	THERMOPLASTIC PAVEMENT MARKING, LINE 6 INCH	FOOT	650
* 78000600	THERMOPLASTIC PAVEMENT MARKING, LINE 12 INCH	FOOT	280
* 78000650	THERMOPLASTIC PAVEMENT MARKING, LINE 24 INCH	FOOT	130
* 88600600	DETECTOR LOOP REPLACEMENT	FOOT	800
Z0017400	DRAINAGE & UTILITY STRUCTURES TO BE ADJUSTED	EACH	20
X4420132	CLASS D PATCHES (SPECIAL)	SQ YD	500
XX006806	HOT-MIX ASPHALT DRIVEWAY PAVEMENT	SQ YD	30

\* SPECIALTY ITEMS

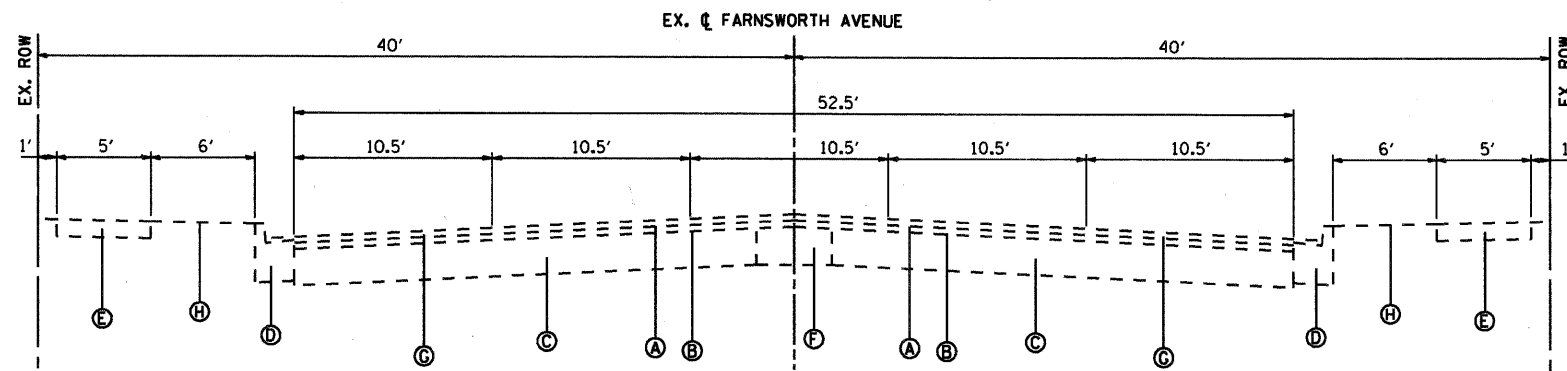


USER NAME = jstrzelka	DESIGNED - JJS	REVISED -
PLOT SCALE = NONE	DRAWN - JJS	REVISED -
PLOT DATE = 2/16/2009	CHECKED - AC	REVISED -
	DATE - 2/16/09	REVISED -

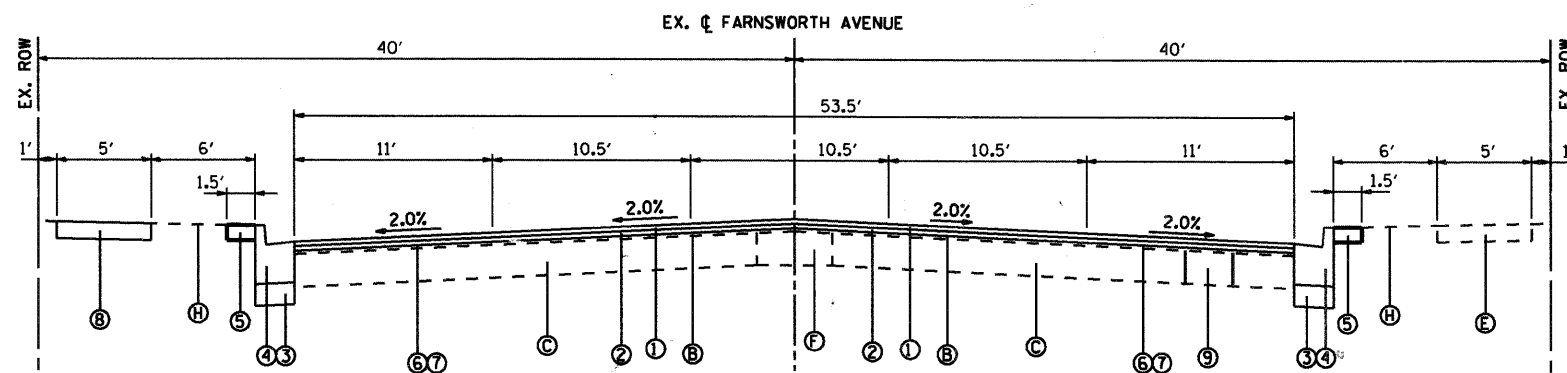
**CITY OF AURORA**

<b>SUMMARY OF QUANTITIES</b>			
SCALE: NONE	SHEET NO. 1 OF 1 SHEETS	STA. NA	TO STA. NA

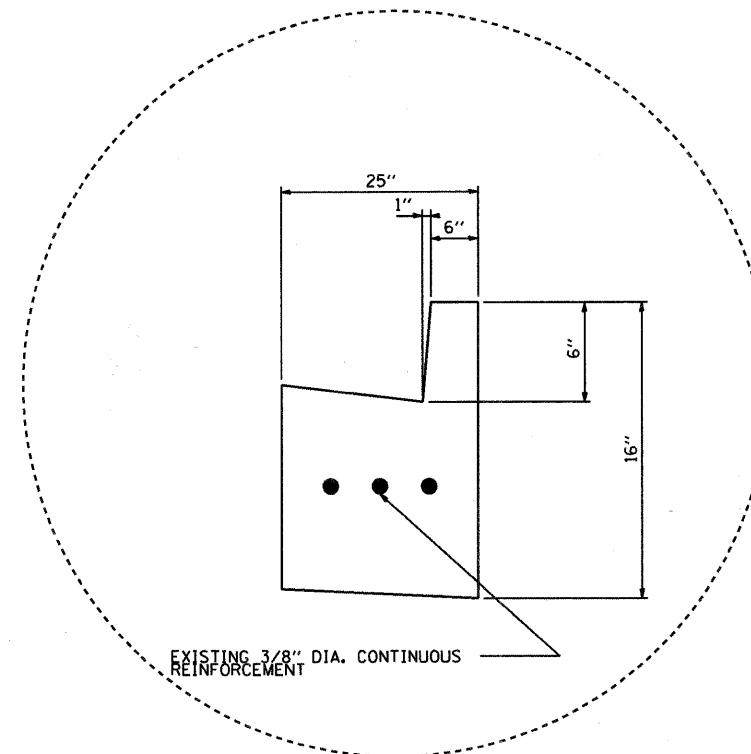
F.A. RTE.	SECTION	COUNTY	TOTAL SHEETS	SHEET NO.
0360	08-00279-00-RS	KANE	12	3
FED. ROAD DIST. NO.			ILLINOIS FED. AID PROJECT	
			CONTRACT NO. 63155	



**EXISTING TYPICAL SECTION  
FARNSWORTH AVENUE**  
STA. 70+75 TO STA. 99+88



**PROPOSED TYPICAL SECTION  
FARNSWORTH AVENUE**  
STA. 70+75 TO STA. 99+88



**EXISTING COMBINATION CONCRETE  
CURB AND GUTTER, TYPE B6.18**

NOTE:  
FOR PROPOSED CONCRETE CURB AND GUTTER, TYPE B6.12  
DETAIL, SEE CITY OF AURORA DETAIL ON SHEET 9.

**EXISTING LEGEND**

- Ⓐ HOT-MIX ASPHALT SURFACE COURSE, 2"
- Ⓑ HOT-MIX ASPHALT BINDER COURSE, 2"
- Ⓒ HOT-MIX ASPHALT BASE COURSE, 10 1/2"
- Ⓓ COMBINATION CONCRETE CURB & GUTTER, TYPE B6.18 TO BE REMOVED
- Ⓔ PORTLAND CEMENT CONCRETE SIDEWALK, 5"
- Ⓕ PORTLAND CEMENT CONCRETE BASE COURSE
- Ⓖ HOT-MIX ASPHALT SURFACE REMOVAL, 2 3/4"
- Ⓗ EXISTING GROUND

**PROPOSED LEGEND**

- ① HOT-MIX ASPHALT SURFACE COURSE, MIX "D", N70, 1 1/2"
- ② LEVELING BINDER (MACHINE METHOD), N70, 1 1/2" (MIN.)
- ③ AGGREGATE BASE COURSE, TYPE B CA-7, 6" (INCLUDED IN THE COST OF CURB & GUTTER)
- ④ COMBINATION CONCRETE CURB AND GUTTER, TYPE B-6.12
- ⑤ SODDING, SALT TOLERANT & TOPSOIL 4" (TO BE INCLUDED IN THE COST OF CURB & GUTTER REMOVAL & REPLACEMENT)
- ⑥ BITUMINOUS MATERIALS (PRIME COAT)
- ⑦ AGGREGATE (PRIME COAT)
- ⑧ SIDEWALK REMOVAL AND REPLACEMENT, SPECIAL (AS DIRECTED BY THE RESIDENT ENGINEER)
- ⑨ CLASS D PATCHES, SPECIAL, 12-INCH (AS DIRECTED BY THE RESIDENT ENGINEER)

**HOT-MIX ASPHALT MIXTURE REQUIREMENTS**

MIXTURE TYPE	AC TYPE	VOIDS
<b>RESURFACING</b>		
HOT-MIX ASPHALT SURFACE COURSE, MIX "D", N70 (IL 9.5mm)	PG 64-22	4% @ 70 GYR
LEVELING BINDER (MACHINE METHOD), N70 (IL 9.5mm)	PG 64-22*	4% @ 70 GYR
<b>PATCHING</b>		
CLASS D PATCHES (HMA BINDER IL-19mm), 12-INCH	PG 64-22*	4% @ 70 GYR
<b>DRIVEWAYS</b>		
HOT-MIX ASPHALT SURFACE COURSE, MIX "C", N50 (IL 9.5mm)	PG 64-22	4% @ 50 GYR

THE UNIT WEIGHT USED TO CALCULATE ALL HOT-MIX ASPHALT SURFACE MIXTURES IS 112 LBS/50 YD/IN

\*WHEN RAP EXCEEDS 20% THE NEW ASPHALT BINDER IN THE MIX SHALL BE PG 58-22



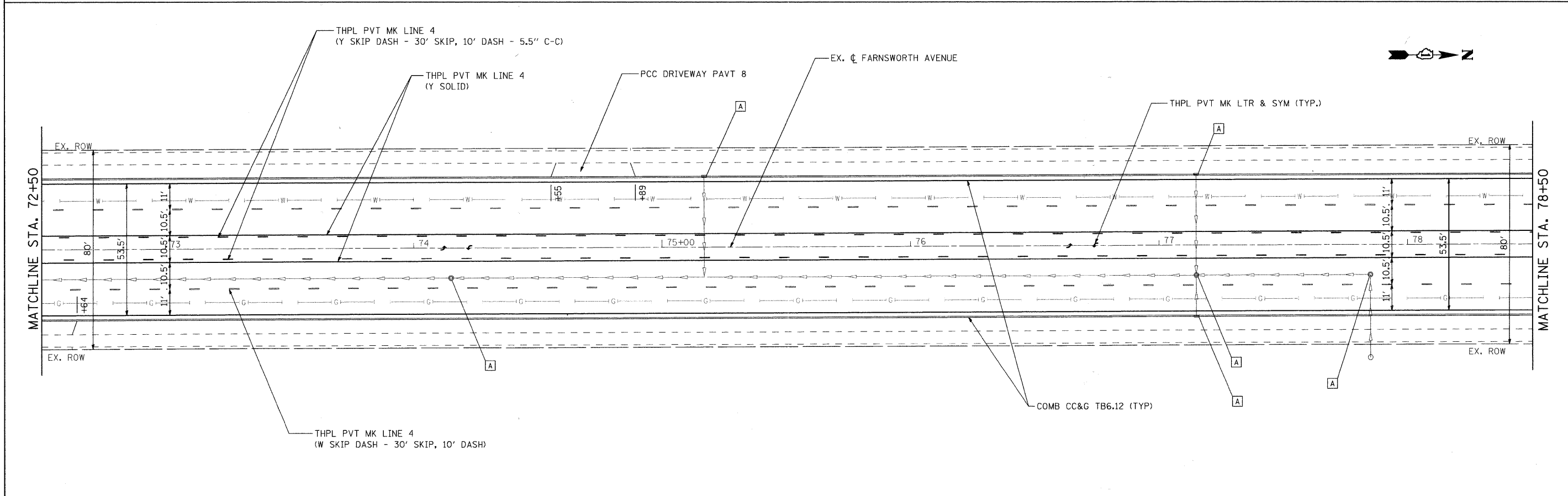
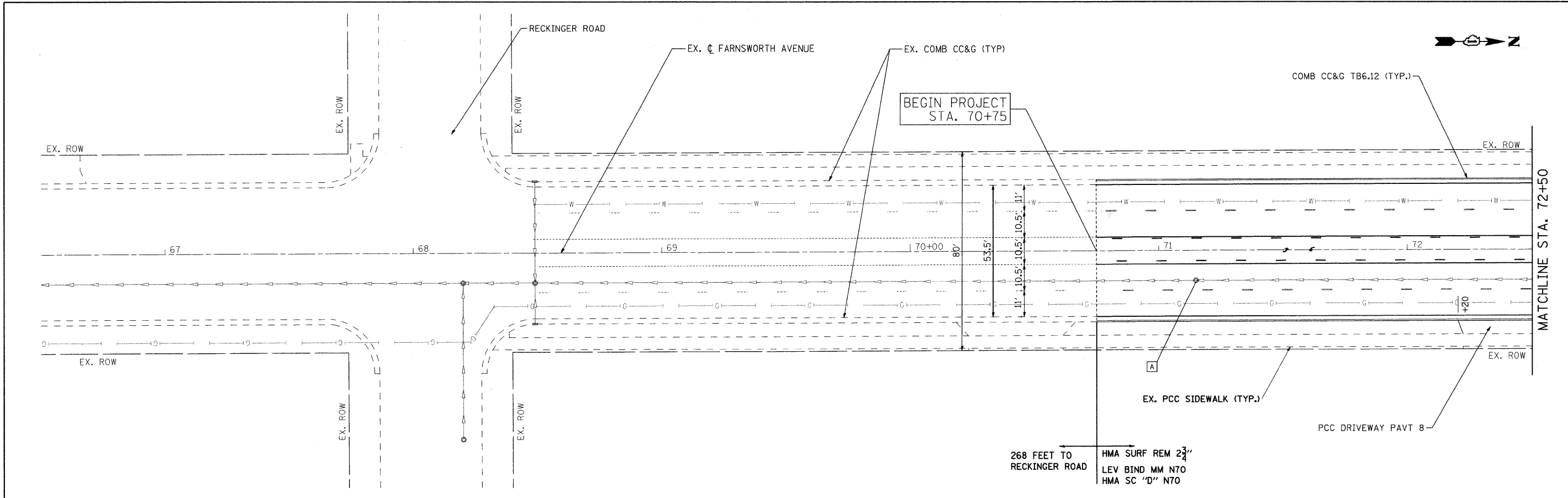
USER NAME = jatzeke	DESIGNED - JJS	REVISED -
PLOT SCALE = NONE	DRAWN - JJS	REVISED -
PLOT DATE = 2/16/2009	CHECKED - AC	REVISED -
	DATE - 2/16/09	REVISED -

**CITY OF AURORA**

**TYPICAL SECTIONS**

SCALE: NONE SHEET NO. 1 OF 1 SHEETS STA. BEGIN TO STA. END

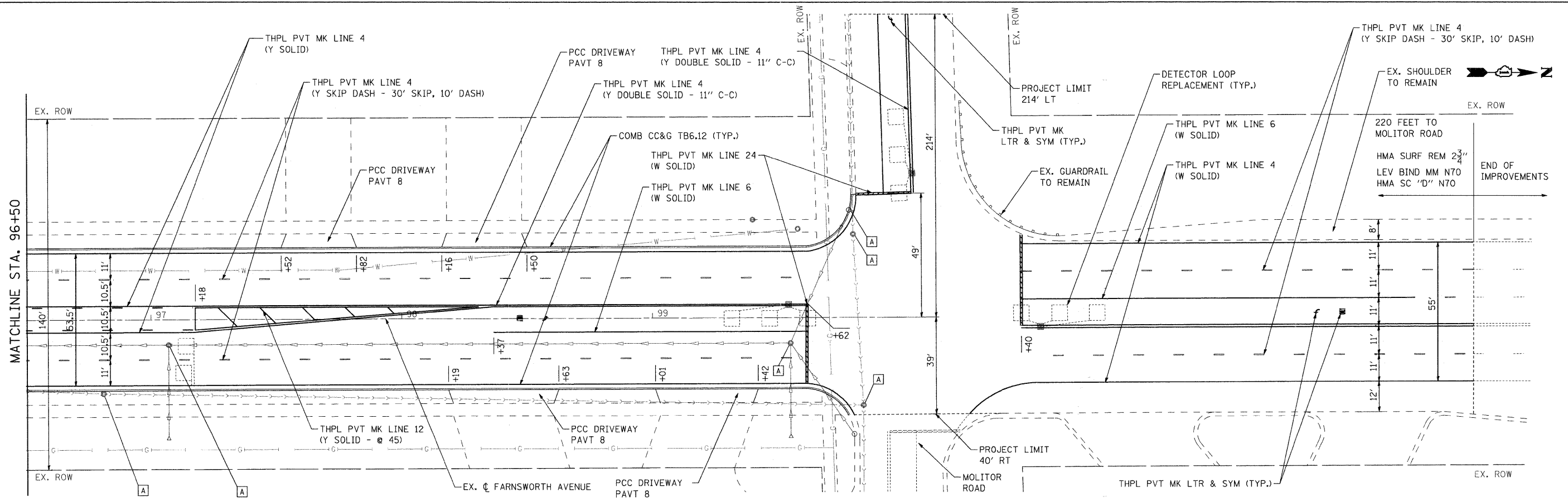
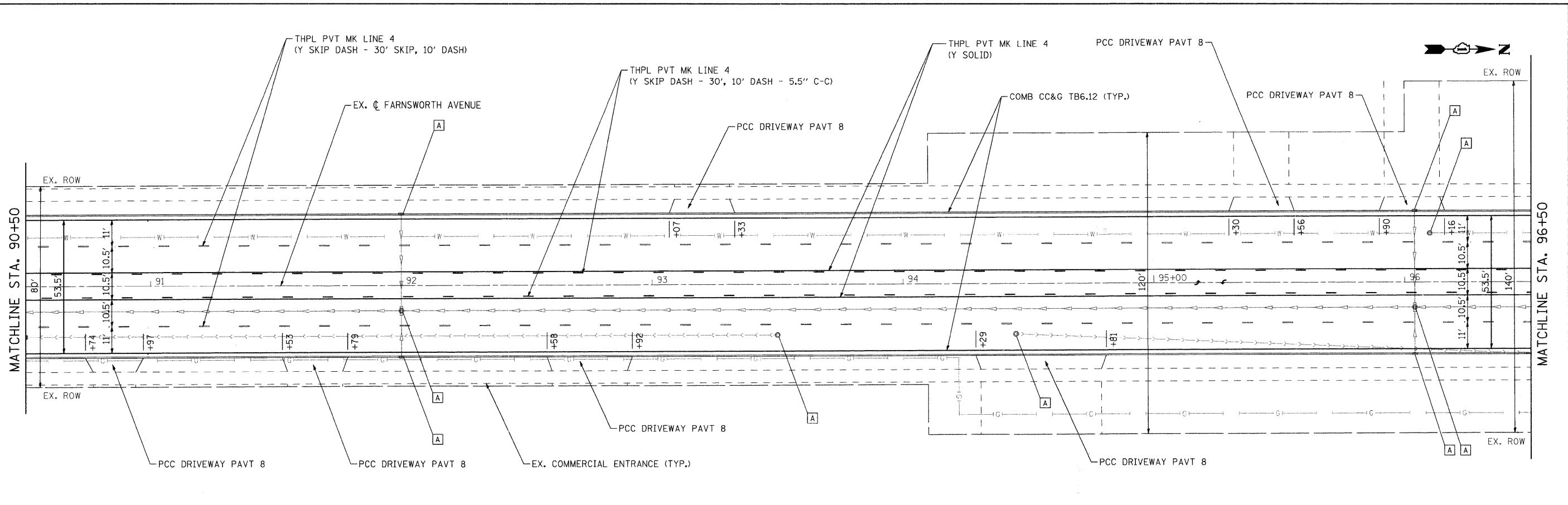
F.A. RTE.	SECTION	COUNTY	TOTAL SHEETS	SHEET NO.
0360	08-00279-00-RS	KANE	12	4
FED. ROAD DIST. NO. ILLINOIS FED. AID PROJECT			CONTRACT NO. 63155	



<p>SEC Group, Inc. Engineering Planning Architecture</p> <p>McHenry • Yorkville • New Lenox • Chicago www.secgroupinc.com</p>	USER NAME = jstrzelko FILE NAME = 080530-pin-01.dgn PLOT SCALE = 1" = 20' PLOT DATE = 3/13/2009	DESIGNED - JJS DRAWN - JJS CHECKED - AC DATE - 3/13/09	REVISED - 3/13/2009 REVISED - REVISED - REVISED -	<b>CITY OF AURORA</b>	<b>ROADWAY PLAN - FARNSWORTH AVENUE</b>	F.A. RTE. 0360 SECTION 08-00279-00-RS COUNTY KANE TOTAL SHEETS 12 SHEET NO. 5 CONTRACT NO. 63155	FED. ROAD DIST. NO. ILLINOIS FED. AID PROJECT
	SCALE: 1" = 20'    SHEET NO. 1 OF 3 SHEETS    STA. BEGIN TO STA. 78+50						
	MATCHLINE STA. 72+50    MATCHLINE STA. 78+50						
	BEGIN PROJECT STA. 70+75						

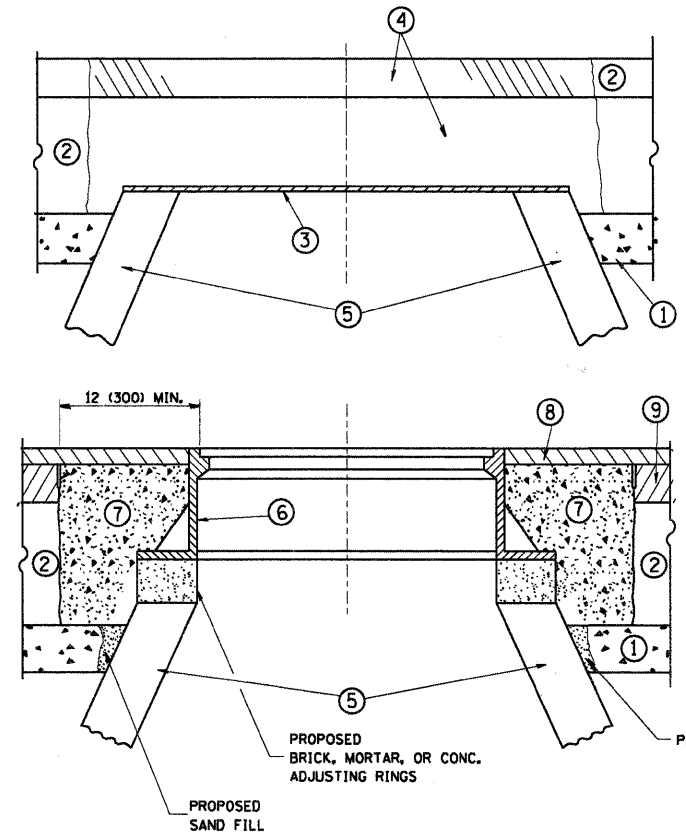
FARNSWORTH AV LAPP RESURFACING  
 APR-080530  
 080530-pin-01.dgn





<p>SEC Group, Inc. Engineering Planning Architecture McHenry • Yorkville • New Lenox • Chicago www.secgroupinc.com</p>	USER NAME = jstrzelko	DESIGNED - JJS	REVISED - 3/15/2009	<p><b>CITY OF AURORA</b></p> <p><b>ROADWAY PLAN - FARNSWORTH AVENUE</b></p>	F.A. RTE. 0360	SECTION 08-00279-00-RS	COUNTY KANE	TOTAL SHEETS 12	SHEET NO. 7	
	FILE NAME = 080530-pln-03.dgn	DRAWN - JJS	REVISED -		SCALE: 1" = 20'	SHEET NO. 3 OF 3 SHEETS	STA. 90+50 TO STA. END	CONTRACT NO. 63155		
	PLOT SCALE = 1" = 20'	CHECKED - AC	REVISED -			FED. ROAD DIST. NO. ILLINOIS FED. AID PROJECT				
	PLOT DATE = 3/13/2009	DATE = 3/13/09	REVISED -							

FARNSWORTH AV LAPP RESURFACING  
AURORA-080530  
080530-pln-03.dgn



**CONSTRUCTION PROCEDURES**

**STAGE 1 (BEFORE PAVEMENT MILLING)**

- A) REMOVE A MINIMUM OF 12 (300) OF THE PAVEMENT FROM AROUND THE STRUCTURE.
- B) REMOVE THE EXISTING FRAME AND LID FROM THE STRUCTURE.
- C) COVER THE STRUCTURE OPENING WITH A 36 (900) DIAMETER METAL PLATE.
- D) BACKFILL WITH CRUSHED STONE AND A MINIMUM 8 INCH THICK HMA SURFACE MIX APPROVED BY THE ENGINEER.

**STAGE 2 (AFTER PAVEMENT MILLING)**

- A) REMOVE THE HMA SURFACE MIX AND CRUSHED STONE.
- B) INSTALL THE FRAME AND LID; ADJUST THE FRAME TO ITS FINAL SURFACE ELEVATION.
- C) THE SURROUNDING SPACE SHALL BE FILLED WITH CLASS S1 CONCRETE, OR HMA SURFACE COURSE OR HMA BINDER COURSE TO THE ELEVATION OF THE SURFACE OF THE EXISTING BASE COURSE OR THE BINDER COURSE.

THE PROCEDURE EXPLAINED ABOVE SHALL CONFORM TO THE APPLICABLE PORTIONS OF SECTIONS 353, 406, 602, AND 603 OF THE STANDARD SPECIFICATIONS.

**LEGEND**

- ① SUB-BASE GRANULAR MATERIAL
- ② EXISTING PAVEMENT
- ③ 36 (900) DIAMETER METAL PLATE
- ④ PROPOSED CRUSHED STONE AND HMA SURFACE MIX
- ⑤ EXISTING STRUCTURE
- ⑥ FRAME AND LID (SEE NOTES)
- ⑦ CLASS S1 CONCRETE, HMA SURFACE COURSE OR HMA BINDER COURSE
- ⑧ PROPOSED HMA SURFACE COURSE
- ⑨ PROPOSED HMA BINDER COURSE

**LOCATION OF STRUCTURES:**

THE CONTRACTOR WILL BE REQUIRED TO KEEP A RECORD OF THE LOCATIONS OF THE BURIED STRUCTURES ACCORDING TO THE STATION AND DISTANCE LEFT OR RIGHT OF THE CENTERLINE OF PAVEMENT. UPON COMPLETION OF THE WORK, THE CONTRACTOR WILL DELIVER THE RECORD TO THE ENGINEER.

**BASIS OF PAYMENT:** THIS WORK WILL BE PAID FOR AT THE CONTRACT UNIT PRICE PER EACH FOR "DRAINAGE & UTILITY STRUCTURES TO BE ADJUSTED" OR "MANHOLES TO BE ADJUSTED WITH NEW TYPE 1 FRAME, CLOSED LID.

**NOTES:**

EXISTING BROKEN FRAMES AND LIDS SHALL BE REMOVED AND DISPOSED OF BY THE CONTRACTOR AND SHALL BE REPLACED AS DIRECTED BY THE ENGINEER. REPLACEMENT FRAMES AND LIDS WILL BE PAID FOR IN ACCORDANCE WITH ARTICLE 109.04 OF THE STANDARD SPECIFICATIONS UNLESS A SEPARATE PAY ITEM HAS BEEN PROVIDED.

IF THE EXISTING LIDS ARE OPEN, THE FRAME WILL BE ADJUSTED TO THE ELEVATION OF THE MILLED PAVEMENT SURFACE PRIOR TO THE MILLING OPERATION. THE FRAME WILL NOT BE REMOVED AND COVERED BY THE METAL PLATE.

CITY OF CHICAGO CASTINGS ARE THE PROPERTY OF THE CITY AND THE CONTRACTOR SHALL NOTIFY THE CITY FOR REMOVAL AND DISPOSITION OF THE CASTINGS.

THE METAL PLATE USED TO COVER THE STRUCTURE SHALL REMAIN THE PROPERTY OF THE CONTRACTOR.

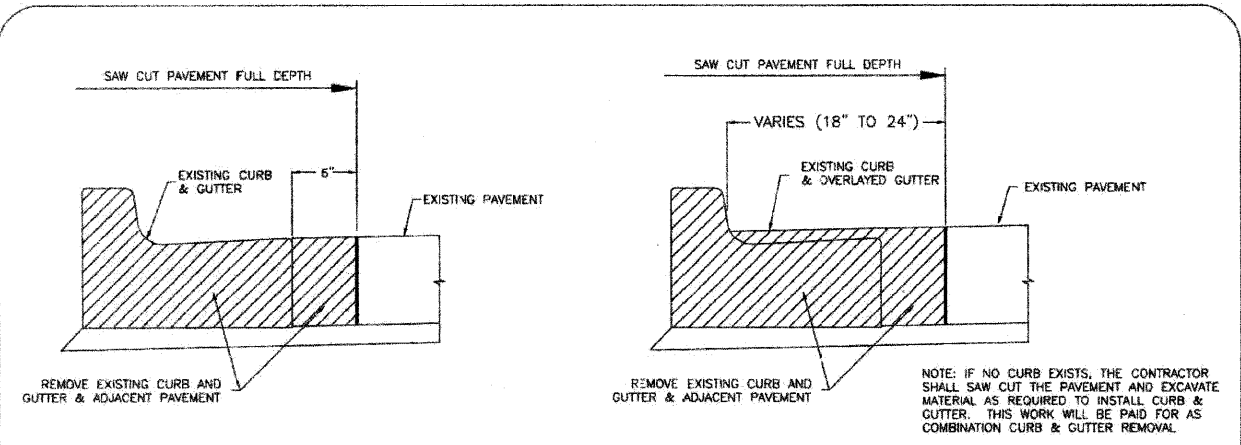
WHEN STRUCTURES ARE TO BE ADJUSTED OR RECONSTRUCTED, THE LOWERING AND RAISING OF THE FRAMES AND LIDS WILL NOT BE PAID FOR SEPARATELY BUT WILL BE INCLUDED IN THE COST OF THE CORRESPONDING PAY ITEM.

**DETAILS FOR FRAMES AND LIDS ADJUSTMENT WITH MILLING**

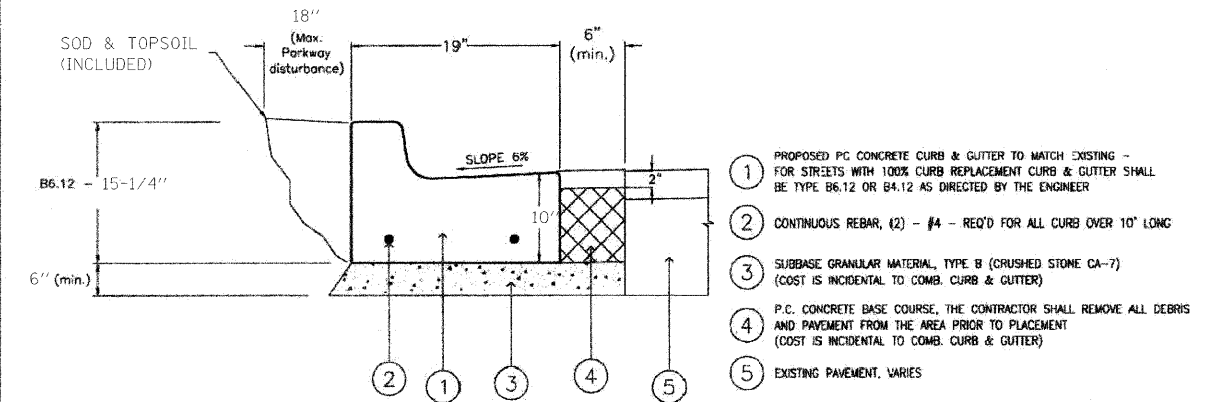
ALL DIMENSIONS ARE IN INCHES (MILLIMETERS) UNLESS OTHERWISE SHOWN

<p>SEC Group, Inc.          Single Professional Design Firm # 194-00010          Engineering          Surveying          Planning          Landscape Architecture          McHenry • Yorkville • New Lenox • Chicago          www.secgroupinc.com</p>	USER NAME = jstrzelko PLOT SCALE = NONE PLOT DATE = 2/16/2009	DESIGNED - R. SHAH DRAWN - CHECKED - DATE - 2/16/09	REVISED - R. SHAH 03-10-95 REVISED - A. ABBAS 03-21-97 REVISED - R. WIEDEMAN 05-14-04 REVISED - R. BORO 01-01-07	<b>CITY OF AURORA</b>	<b>DETAILS FOR FRAMES AND LIDS ADJUSTMENT WITH MILLING</b>		F.A. RTE. 0360 SECTION 08-00279-00-RS COUNTY KANE TOTAL SHEETS 12 SHEET NO. 8	CONTRACT NO. 63155
	SCALE: NONE SHEET NO. 1 OF 1 SHEETS STA. TO STA.	FED. ROAD DIST. NO. [ILLINOIS] FED. AID PROJECT						

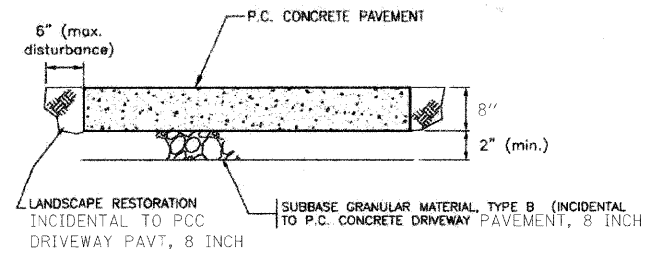




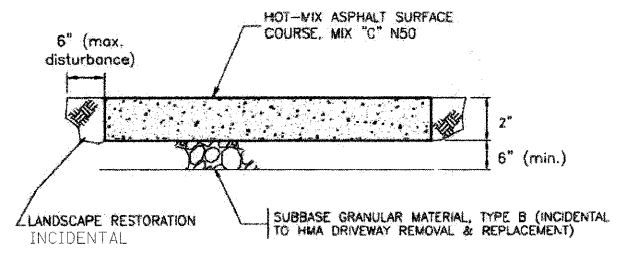
CURB AND GUTTER REMOVAL DETAIL



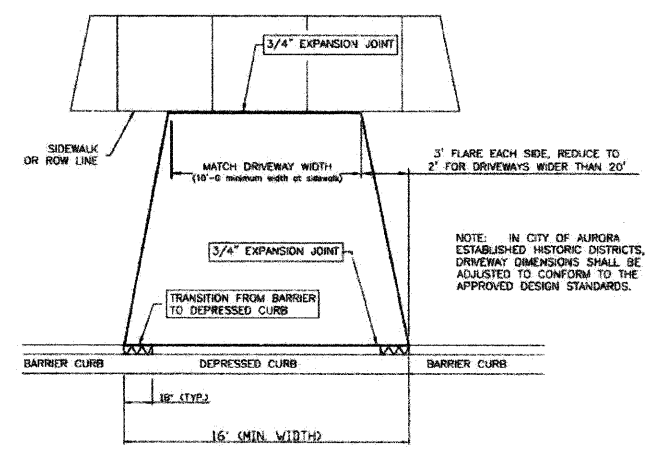
COMBINATION CONCRETE CURB AND GUTTER REMOVAL AND REPLACEMENT,



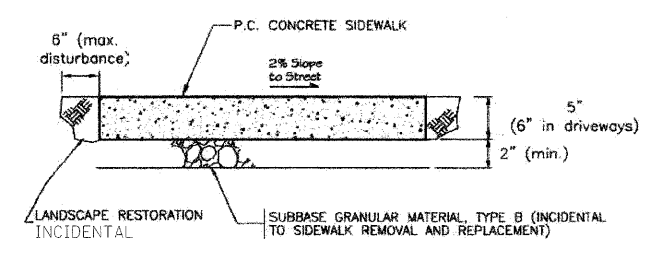
P. C. CONCRETE DRIVEWAY REMOVAL AND REPLACEMENT, 8"



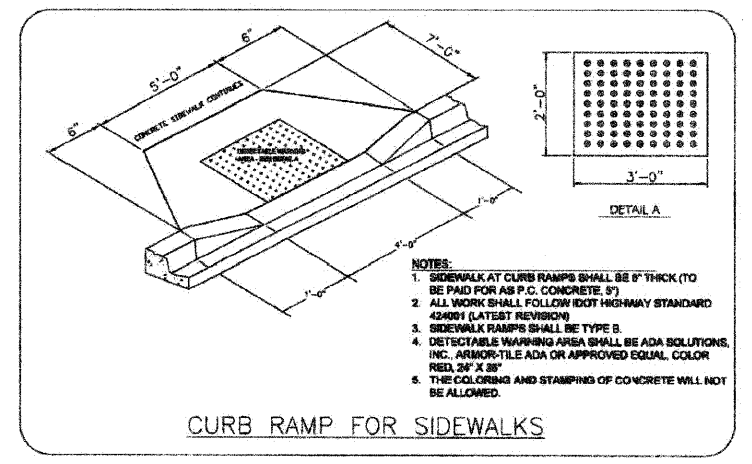
HOT-MIX ASPHALT DRIVEWAY PAVEMENT



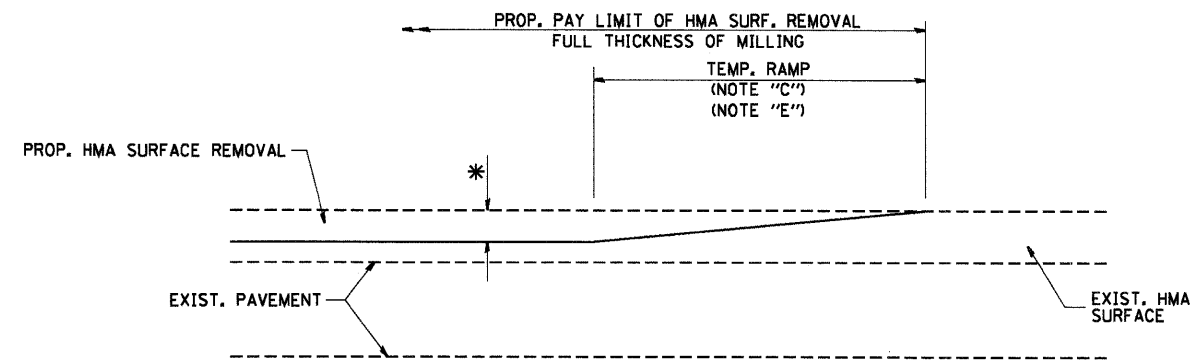
TYPICAL DRIVEWAY DETAIL



SIDEWALK REMOVAL AND REPLACEMENT, 5"

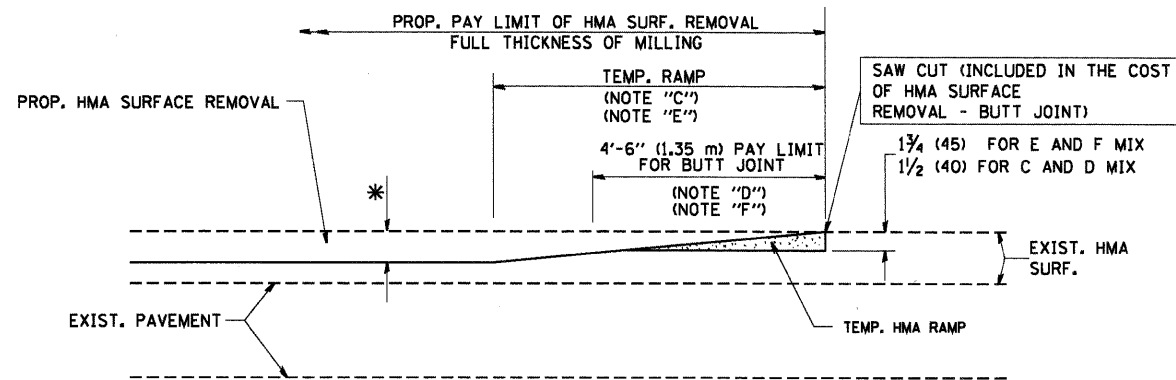


CURB RAMP FOR SIDEWALKS



MILLED TEMPORARY RAMP  
(FOR BUTT JOINT AND HMA TAPER SEE DETAIL BELOW)

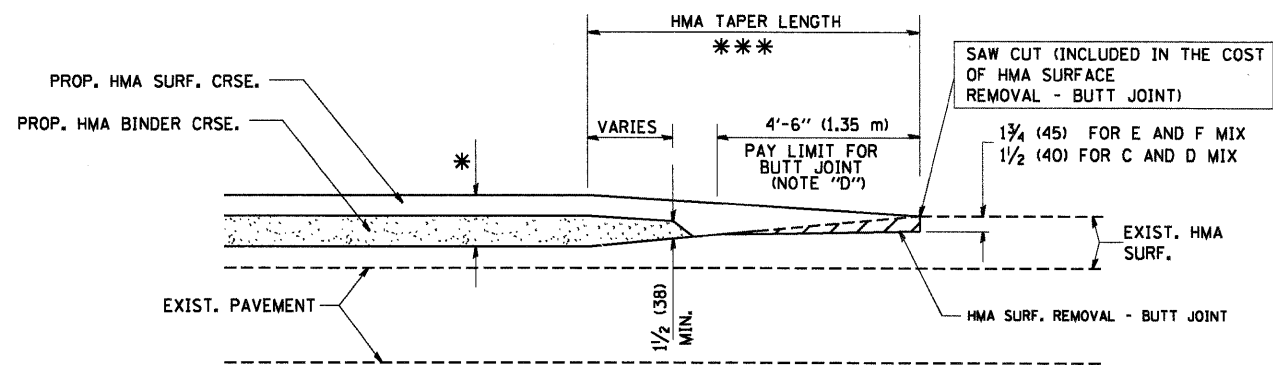
**OPTION 1**



HMA CONSTRUCTED TEMPORARY RAMP  
(FOR BUTT JOINT AND HMA TAPER SEE DETAIL BELOW)

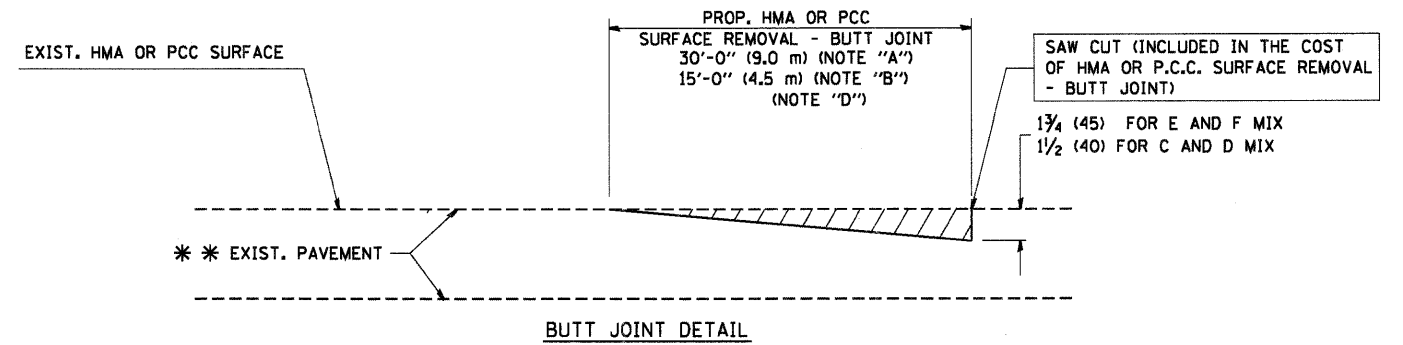
**OPTION 2**

**TYPICAL TEMPORARY RAMP**

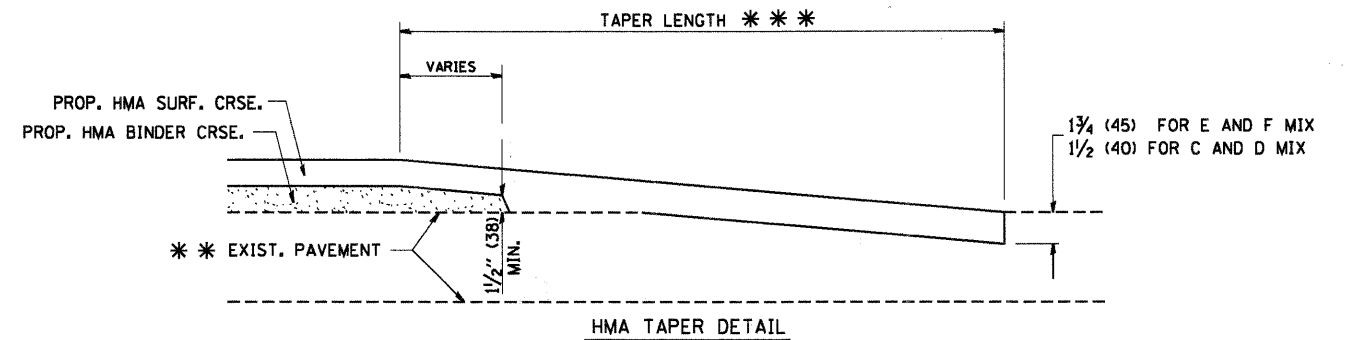


BUTT JOINT AND HMA TAPER

**TYPICAL BUTT JOINT AND HMA TAPER FOR MILLING AND RESURFACING**



BUTT JOINT DETAIL



HMA TAPER DETAIL

**TYPICAL BUTT JOINT AND HMA TAPER FOR RESURFACING ONLY**

\*\*\* PC CONCRETE, HMA OR HMA RESURFACED PAVEMENT.

**NOTES**

- A: MAINLINE ROADWAYS AND MAJOR SIDE ROADS.
- B: MINOR SIDE ROADS.
- C: THE TEMP. RAMP SHALL BE CONSTRUCTED IMMEDIATELY UPON REMOVAL OF THE EXISTING HMA SURFACE.
- D: THE BUTT JOINT SHALL BE CONSTRUCTED IMMEDIATELY PRIOR TO PLACING THE PROPOSED HMA COURSES.
- E: TAPER THE TEMP. RAMP AT A RATE OF 3'-0" (900 mm) PER 1 INCH (25 mm) OF MILLING THICKNESS.
- F: INSTALLATION AND REMOVAL OF THE 4'-6" (1.35 m) TEMP. RAMP IS INCLUDED IN COST OF HMA SURFACE REMOVAL - BUTT JOINT
- G: SEE ARTICLE 406.08 AND 406.14 OF THE STANDARD SPECIFICATIONS FOR "HMA AND/OR PCC SURFACE REMOVAL, BUTT JOINT".
- \* SEE TYPICAL SECTIONS FOR MILLING THICKNESS.
- \*\*\* 20'-0" (6.1 m) PER 1 (25) RESURFACING (NOTE "A")  
10'-0" (3.0 m) PER 1 (25) RESURFACING (NOTE "B")

**BASIS OF PAYMENT:**

THE BUTT JOINT WILL BE PAID FOR AT THE CONTRACT UNIT PRICE PER SQUARE YARD (SQUARE METER) FOR "HOT-MIX ASPHALT SURFACE REMOVAL - BUTT JOINT" OR FOR "PORTLAND CEMENT CONCRETE SURFACE REMOVAL - BUTT JOINT".

ALL DIMENSIONS ARE IN INCHES (MILLIMETERS) UNLESS OTHERWISE SHOWN.



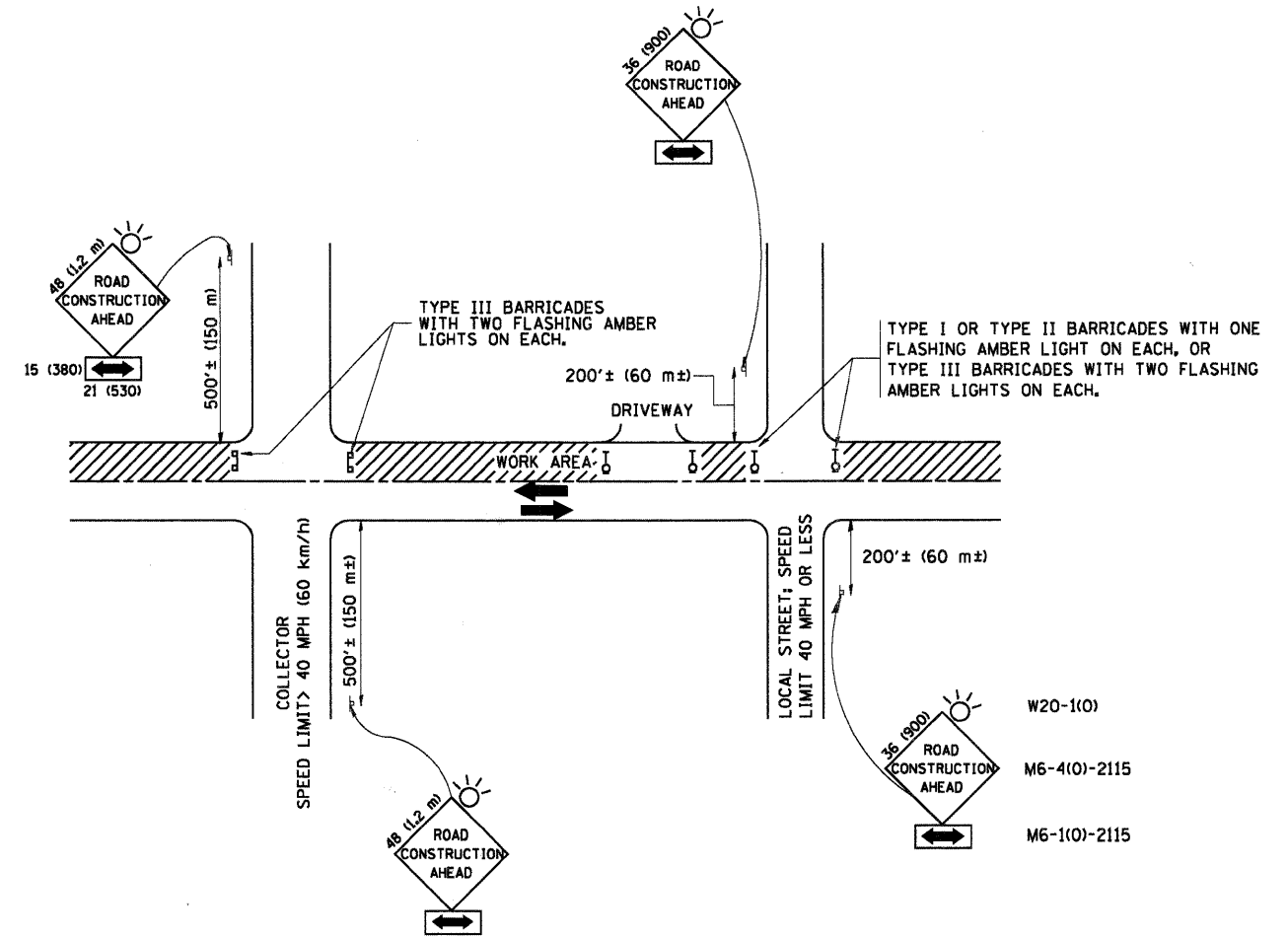
USER NAME = jstrzelka	DESIGNED - M. DE YOUNG	REVISED - R. SHAH 10-25-94
PLOT SCALE = NONE	DRAWN -	REVISED - A. ABBAS 03-21-97
PLOT DATE = 2/16/2009	CHECKED -	REVISED - M. GOMEZ 04-06-01
	DATE - 2/16/09	REVISED - R. BORO 01-01-07

CITY OF AURORA

**BUTT JOINT AND HMA TAPER DETAILS**

SCALE: NONE SHEET NO. 1 OF 1 SHEETS STA. TO STA.

F.A. RTE.	SECTION	COUNTY	TOTAL SHEETS	SHEET NO.
0360	08-00279-00-RS	KANE	12	10
BD400-05 (BD-32)			CONTRACT NO. 63155	
FED. ROAD DIST. NO. ILLINOIS FED. AID PROJECT				



TRAFFIC CONTROL AND PROTECTION FOR SIDE ROADS, INTERSECTIONS, AND DRIVEWAYS

NOTES:

- A. FOR NO LANE RESTRICTION ON THE SIDE ROAD OR DRIVEWAYS
  1. SIDE ROAD WITH A SPEED LIMIT OF 40 MPH (60 km/h) OR LESS AS SHOWN ON THE DRAWING AND AS DIRECTED BY THE ENGINEER:
    - a) ONE ROAD CONSTRUCTION AHEAD SIGN 36 x 36 (900x900) WITH A FLASHER AND FLAG MOUNTED ON IT APPROXIMATELY 200' (60 m) IN ADVANCE OF THE MAIN ROUTE.
    - b) THE CLOSED PORTION OF THE MAIN ROUTE SHALL BE PROTECTED BY BLOCKING WITH TYPE I, TYPE II OR TYPE III BARRICADES, 1/3 OF THE CROSS SECTION OF THE CLOSED PORTION.
  2. SIDE ROAD WITH A SPEED LIMIT GREATER THAN 40 MPH (60 km/h) AS SHOWN ON THE DRAWING AND AS DIRECTED BY THE ENGINEER:
    - a) ONE ROAD CONSTRUCTION AHEAD SIGN 48 x 48 (1.2 m x 1.2 m) WITH A FLASHER MOUNTED ON IT APPROXIMATELY 500' (150 m) IN ADVANCE OF THE MAIN ROUTE.
    - b) THE CLOSED PORTION OF THE MAIN ROUTE SHALL BE PROTECTED BY BLOCKING WITH TYPE III BARRICADES, 1/2 OF THE CROSS SECTION OF THE CLOSED PORTION.
- 3. WHEN THE SIDE ROAD LIES BETWEEN THE BEGINNING OF THE MAINLINE SIGNING AND THE WORK ZONE, A SINGLE HEADED ARROW (M6-1) SHALL BE USED IN LIEU OF THE DOUBLE HEADED ARROW (M6-4).
- B. FOR A LANE CLOSURE ON A SIDE ROAD OR DRIVEWAY:
 

USE APPLICABLE PORTIONS OF THE TYPICAL APPLICATION OF TRAFFIC CONTROL DEVICES (STD. 701501, STD. 701606 OR THE APPROPRIATE STANDARD). THE SPACING OF SIGNS AND BARRICADES SHALL BE ADJUSTED FOR FIELD CONDITIONS AS DIRECTED BY THE ENGINEER. THE DIRECTIONAL ARROW SHALL BE COVERED OR REMOVED WHEN NO LONGER CONSISTENT WITH THE SIDE ROAD LANE CLOSURE.
- C. ADVANCE WARNING SIGNS ARE TO BE OMITTED ON DRIVEWAY UNLESS OTHERWISE NOTED.
- D. THE TRAFFIC CONTROL AND PROTECTION FOR SIDE ROADS, INTERSECTIONS, AND DRIVEWAYS SHALL BE INCIDENTAL TO THE COST OF SPECIFIED TRAFFIC CONTROL STANDARDS OR ITEMS.

All dimensions are in millimeters (inches) unless otherwise shown.



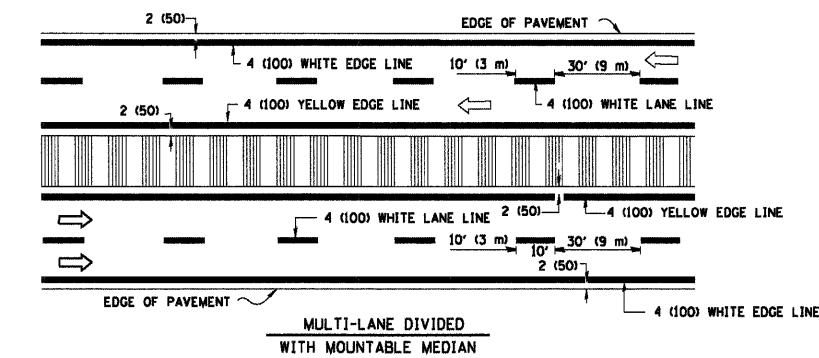
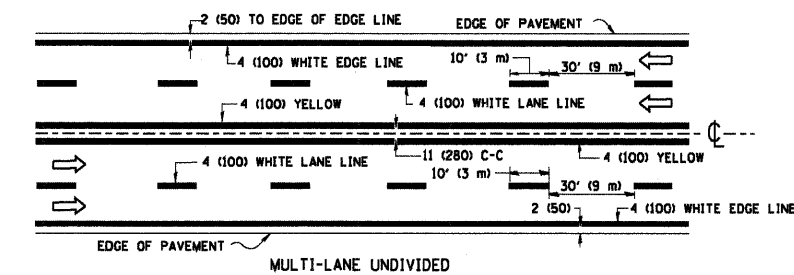
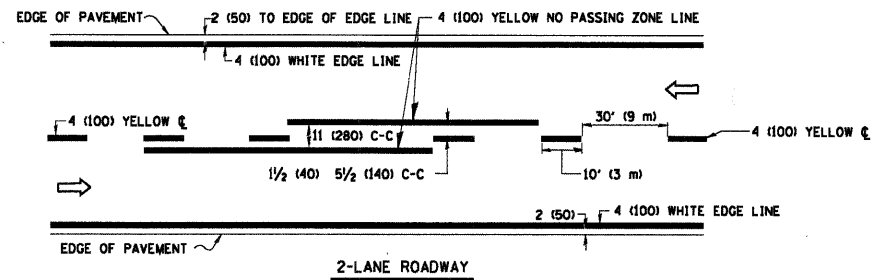
USER NAME = jstrzelko	DESIGNED - LHA	REVISED - J. OBERLE 10-18-95
PLOT SCALE = NONE	DRAWN -	REVISED - A. HOUSEH 03-06-96
PLOT DATE = 2/16/2009	CHECKED -	REVISED - A. HOUSEH 10-15-96
	DATE - 2/16/09	REVISED - T. RAMMACHER 01-06-00

CITY OF AURORA

TRAFFIC CONTROL AND PROTECTION FOR SIDE ROADS, INTERSECTIONS, AND DRIVEWAYS

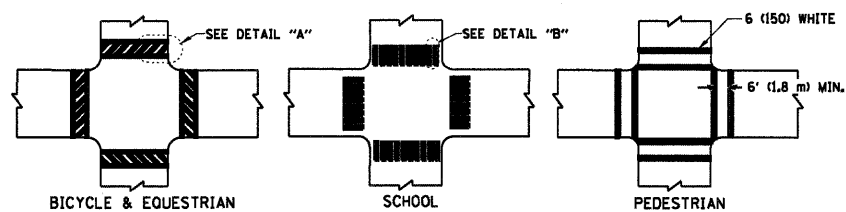
SCALE: NONE SHEET NO. 1 OF 1 SHEETS STA. TO STA.

F.A. RTE.	SECTION	COUNTY	TOTAL SHEETS	SHEET NO.
0360	08-00279-00-RS	KANE	12	11
TC-10			CONTRACT NO. 63155	
FED. ROAD DIST. NO. [ILLINOIS] FED. AID PROJECT				

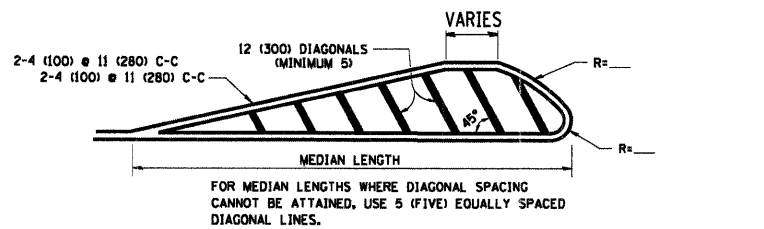
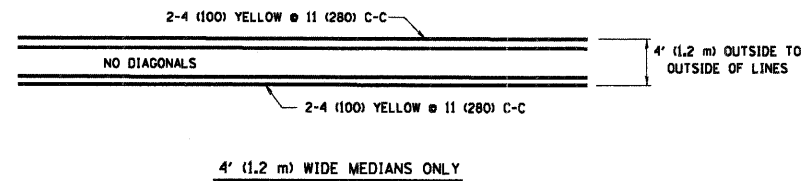


NOTE: MEDIANS WITH BARRIER CURB DO NOT REQUIRE AN EDGE LINE

**TYPICAL LANE AND EDGE LINE MARKING**

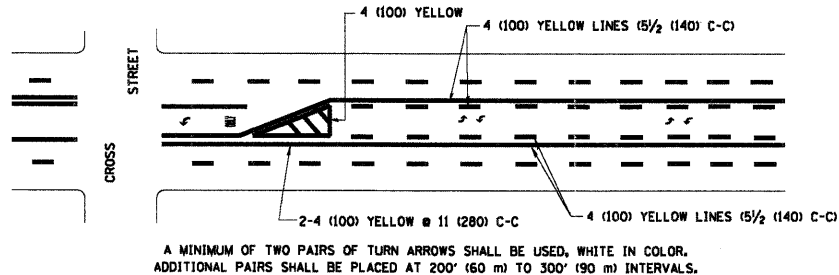


**TYPICAL CROSSWALK MARKING**

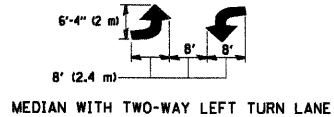


DIAGONAL LINE SPACING: 50' (15 m) C-C (LESS THAN 30MPH (50 km/h))  
75' (25 m) C-C (30MPH (50 km/h) TO 45MPH (70 km/h))  
150' (45 m) C-C (MORE THAN 45MPH (70 km/h))

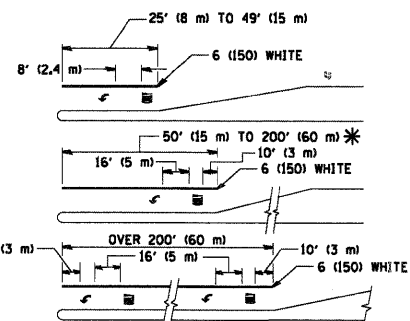
**MEDIANS OVER 4' (1.2 m) WIDE**



A MINIMUM OF TWO PAIRS OF TURN ARROWS SHALL BE USED, WHITE IN COLOR. ADDITIONAL PAIRS SHALL BE PLACED AT 200' (60 m) TO 300' (90 m) INTERVALS.



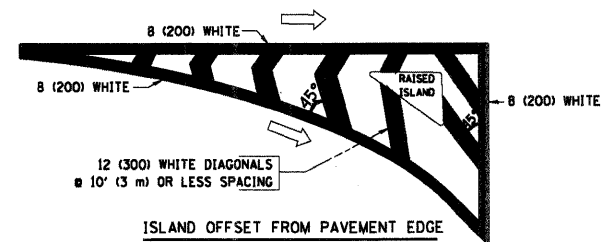
**TYPICAL PAINTED MEDIAN MARKING**



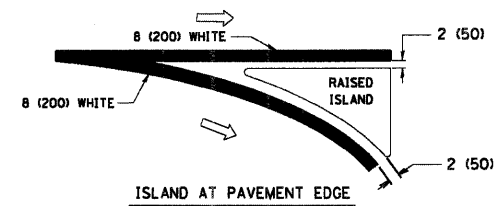
FULL SIZE LETTERS 8' (2.4 m) AND ARROWS SHALL BE USED.  
\* TURN LANES IN EXCESS OF 400' (120 m) IN LENGTH MAY HAVE AN ADDITIONAL SET OF ARROW - "ONLY" INSTALLED MIDWAY BETWEEN THE OTHER TWO SETS OF ARROW - "ONLY".

**TYPICAL LEFT (OR RIGHT) TURN LANE**

**TYPICAL TURN LANE MARKING**



**ISLAND OFFSET FROM PAVEMENT EDGE**



**ISLAND AT PAVEMENT EDGE**

**TYPICAL ISLAND MARKING**

TYPE OF MARKING	WIDTH OF LINE	PATTERN	COLOR	SPACING / REMARKS
CENTERLINE ON 2 LANE PAVEMENT	4 (100)	SKIP-DASH	YELLOW	10' (3 m) LINE WITH 30' (9 m) SPACE
CENTERLINE ON MULTI-LANE UNDIVIDED PAVEMENT	2 @ 4 (100)	SOLID	YELLOW	11 (280) C-C
NO PASSING ZONE LINES: FOR ONE DIRECTION FOR BOTH DIRECTIONS	4 (100) 2 @ 4 (100)	SOLID	YELLOW YELLOW	5/2 (140) C-C FROM SKIP-DASH CENTERLINE 11 (280) C-C OMIT SKIP-DASH CENTERLINE BETWEEN
LANE LINES	4 (100) 5 (125) ON FREEWAYS	SKIP-DASH SKIP-DASH	WHITE WHITE	10' (3 m) LINE WITH 30' (9 m) SPACE
DOTTED LINES (EXTENSIONS OF CENTER, LANE OR TURN LANE MARKINGS)	SAME AS LINE BEING EXTENDED	SKIP-DASH	SAME AS LINE BEING EXTENDED	2' (600) LINE WITH 6' (1.8 m) SPACE
EDGE LINES	4 (100)	SOLID	YELLOW-LEFT WHITE-RIGHT	OUTLINE MOUNTABLE MEDIANS IN YELLOW; EDGE LINES ARE NOT USED NEXT TO BARRIER CURB
TURN LANE MARKINGS	6 (150) LINE; FULL SIZE LETTERS & SYMBOLS 18' (2.4m)	SOLID	WHITE	SEE TYPICAL TURN LANE MARKING DETAIL
TWO WAY LEFT TURN MARKING	2 @ 4 (100) EACH DIRECTION 8' (2.4m) LEFT ARROW	SKIP-DASH AND SOLID IN PAIRS	YELLOW WHITE	10' (3 m) LINE WITH 30' (9 m) SPACE FOR SKIP-DASH; 5/2 (140) C-C BETWEEN SOLID LINE AND SKIP-DASH LINE SEE TYPICAL TWO-WAY LEFT TURN MARKING DETAIL
CROSSWALK LINES (PEDESTRIAN) A. DIAGONALS (BIKE & EQUESTRIAN) B. LONGITUDINAL BARS (SCHOOL)	2 @ 6 (150) 12 (300) @ 45° 12 (300) @ 90°	SOLID SOLID SOLID	WHITE WHITE WHITE	NOT LESS THAN 6' (1.8 m) APART 2' (600) APART 2' (600) APART SEE TYPICAL CROSSWALK MARKING DETAILS.
STOP LINES	24 (600)	SOLID	WHITE	PLACE 4' (1.2 m) IN ADVANCE OF AND PARALLEL TO CROSSWALK, IF PRESENT. OTHERWISE, PLACE AT DESIRED STOPPING POINT, PARALLEL TO CROSSROAD CENTERLINE, WHERE POSSIBLE
PAINTED MEDIANS	2 @ 4 (100) WITH 12 (300) DIAGONALS @ 45° NO DIAGONALS USED FOR 4' (1.2 m) WIDE MEDIANS	SOLID	YELLOW; TWO WAY TRAFFIC WHITE; ONE WAY TRAFFIC	11 (280) C-C FOR THE DOUBLE LINE SEE TYPICAL PAINTED MEDIAN MARKING.
GORE MARKING AND CHANNELIZING LINES	8 (200) WITH 12 (300) DIAGONALS @ 45°	SOLID	WHITE	DIAGONALS: 16' (4.5 m) C-C (LESS THAN 30MPH (50 km/h)) 20' (6 m) C-C (30MPH (50 km/h) TO 45MPH (70 km/h)) 30' (9 m) C-C (OVER 45MPH (70 km/h))
RAILROAD CROSSING	24 (600) TRANSVERSE LINES; "RR" IS 6' (1.8 m) LETTERS; 16 (400) LINE FOR "X"	SOLID	WHITE	SEE STATE STANDARD 780001 AREA OF: "R"=3.6 SQ. FT. (0.33 m <sup>2</sup> ) EACH "X"=54.0 SQ. FT. (5.0 m <sup>2</sup> )
SHOULDER DIAGONALS	12 (300) @ 45°	SOLID	WHITE - RIGHT YELLOW - LEFT	50' (15 m) C-C (LESS THAN 30MPH (50 km/h)) 75' (25 m) C-C (30 MPH (50 km/h) TO 45MPH (70 km/h)) 150' (45 m) C-C (OVER 45MPH (70 km/h))

FOR FURTHER DETAILS ON PAVEMENT MARKING REFER TO STANDARD SPECIFICATIONS FOR ROAD AND BRIDGE CONSTRUCTION AND STATE STANDARD 780001.

All dimensions are in inches (millimeters) unless otherwise shown.



USER NAME = jstrzelko	DESIGNED - EVERS	REVISED - T. RAMMACHER 10-27-94
PLOT SCALE = NONE	DRAWN - A. HOUSEH 10-09-96	REVISED - A. HOUSEH 10-09-96
PLOT DATE = 2/16/2009	CHECKED -	REVISED - A. HOUSEH 10-17-96
	DATE - 2/16/09	REVISED - T. RAMMACHER 01-06-00

CITY OF AURORA

**DISTRICT ONE  
TYPICAL PAVEMENT MARKINGS**

SCALE: NONE	SHEET NO. 1 OF 1 SHEETS	STA. TO STA.	F.A. RTE. 0360	SECTION 08-00279-00-RS	COUNTY KANE	TOTAL SHEETS 12	SHEET NO. 12
			TC-13		CONTRACT NO. 63155		
			FED. ROAD DIST. NO. (ILLINOIS) FED. AID PROJECT				