

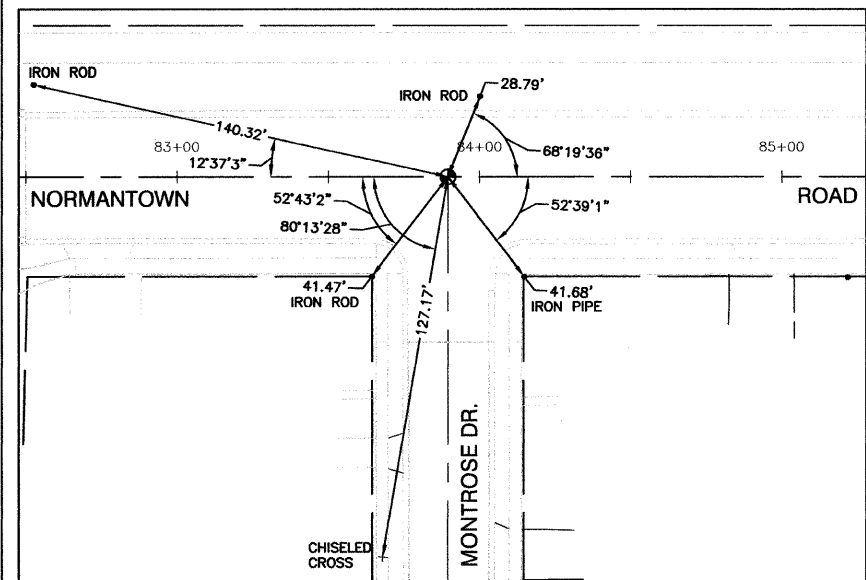
F. A. U. NO.	SECTION	COUNTY	TOTAL SHEETS	SHEET NO.
0281	07-00050-00-FP	WILL	33	6
STA.	TO STA.			
FED. ROAD DIST. NO. 1	ILLINOIS	FED. AID PROJECT		

CONTRACT #63157

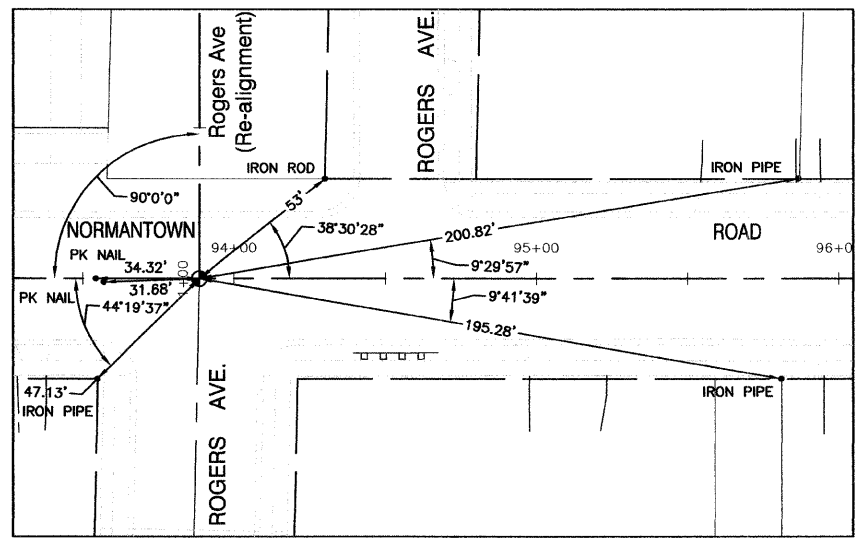


**CURVE "R-1"**  
 PI = 2+81.76  
 Included angle = 20°-18'-04"  
 Radius = 295.00'  
 Tangent length = 52.82'  
 Arc length = 104.53'  
 Chord length = 103.98'  
 External secant = 4.69'  
 Mid ordinate = 4.62'  
 Degree of curve = 19°-25'-20"

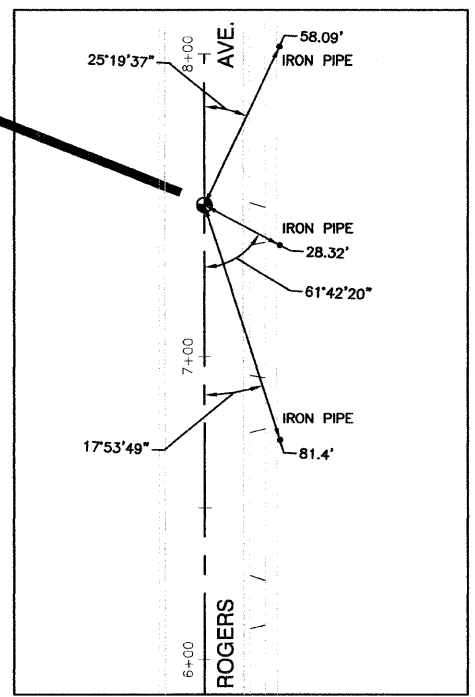
**CURVE "R-2"**  
 PI = 4+70.33  
 Included angle = 20°-21'-45"  
 Radius = 295.00'  
 Tangent length = 52.98'  
 Arc length = 104.84'  
 Chord length = 104.29'  
 External secant = 4.72'  
 Mid ordinate = 4.65'  
 Degree of curve = 19°-25'-20"



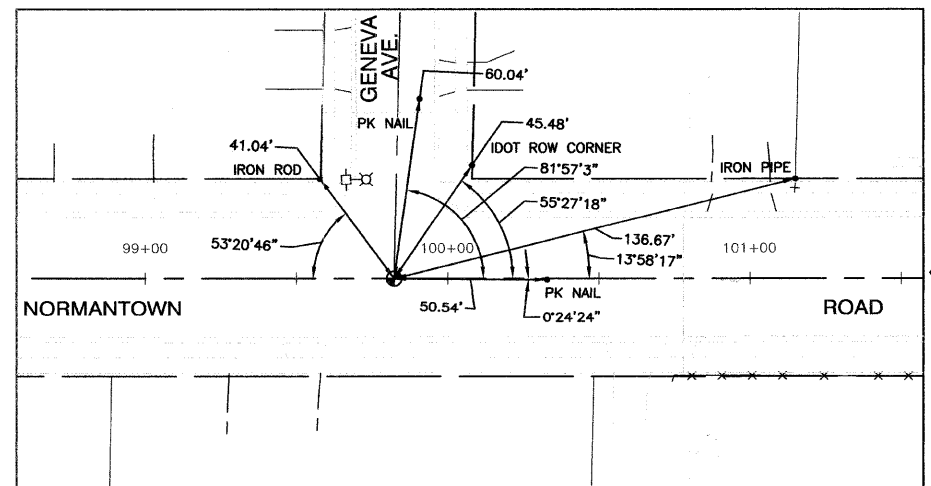
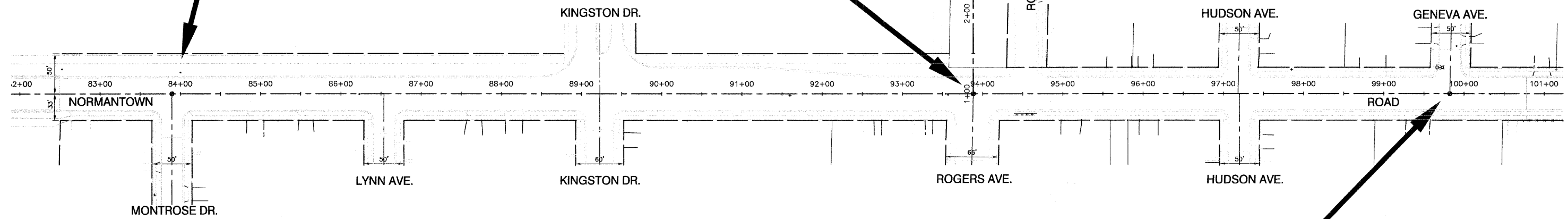
STATION 83+89.52 - NORMANTOWN ROAD CENTERLINE @  
 MONTROSE DR. INTERSECTION  
 SCALE: 1" = 30'



STATION 93+88.52 - NORMANTOWN ROAD CENTERLINE =  
 1+00 @ ROGERS AVE. CENTERLINE (RE-ALIGNMENT)  
 SCALE: 1" = 30'



STATION 7+50 - ROGERS AVE. CENTERLINE  
 SCALE: 1" = 30'



STATION 99+82.28 - NORMANTOWN ROAD CENTERLINE @ GENEVA AVE. INTERSECTION  
 SCALE: 1" = 30'

REVISIONS	
NAME	DATE

ILLINOIS DEPARTMENT OF TRANSPORTATION  
**NORMANTOWN ROAD RECONSTRUCTION  
 ROMEOVILLE  
 ALIGNMENT AND TIES**

SCALE: VERT. N/A  
 HORIZ. 1" = 60'  
 DATE 01/19/2009  
 DRAWN BY JJB  
 CHECKED BY BDB