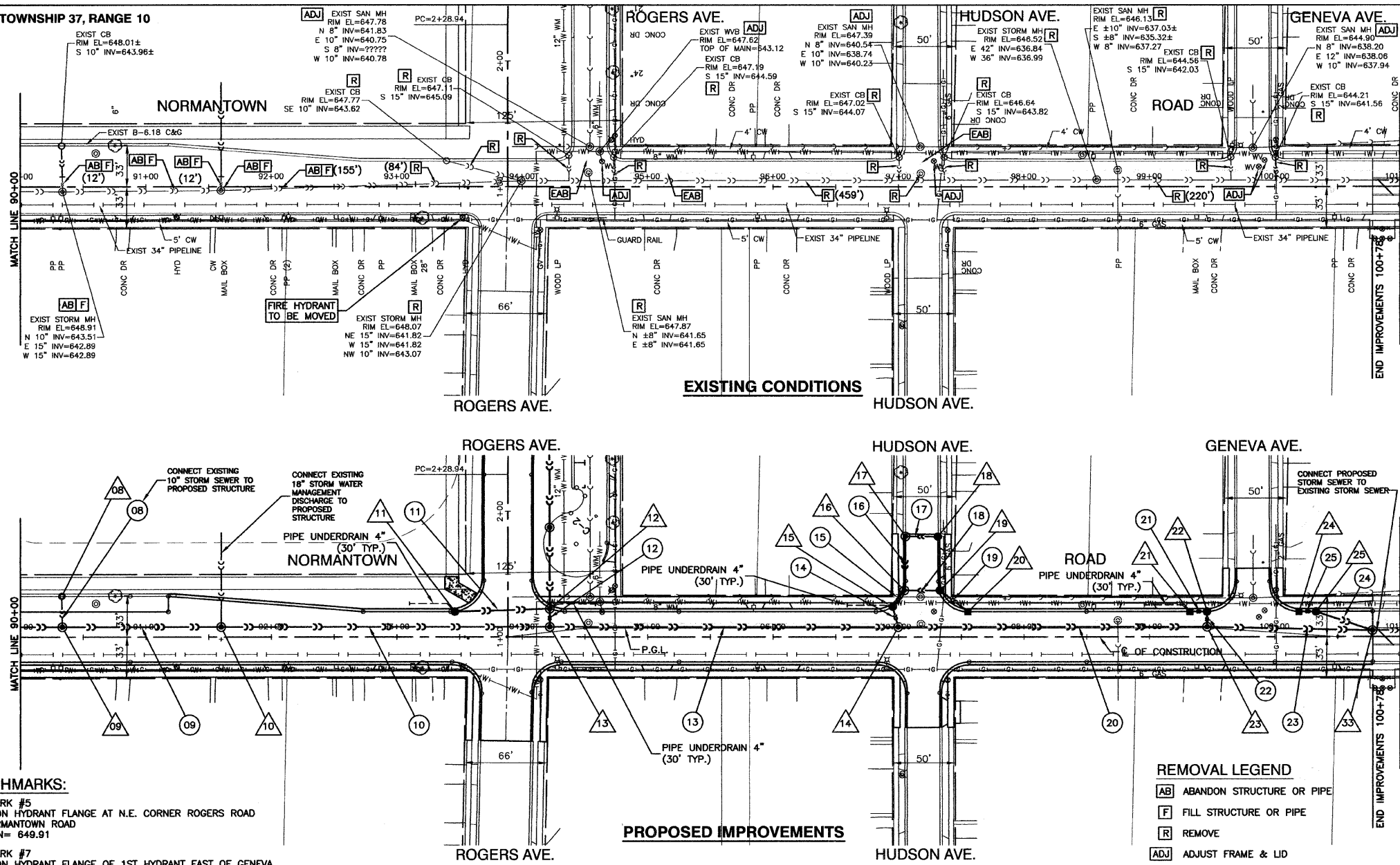


SECTION 33, TOWNSHIP 37, RANGE 10



F.A.U. NO.	SECTION	COUNTY	TOTAL SHEETS	SHEET NO.
0281	07-0050-00-PP	WILL	33	14

CONTRACT #63157

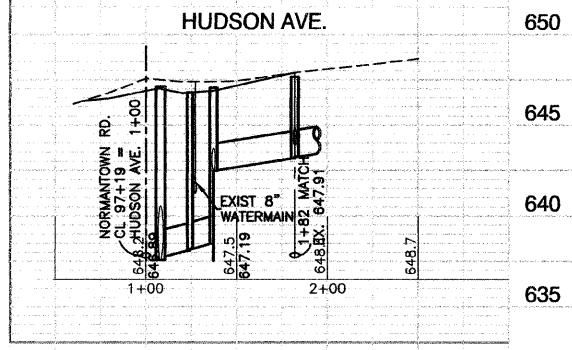
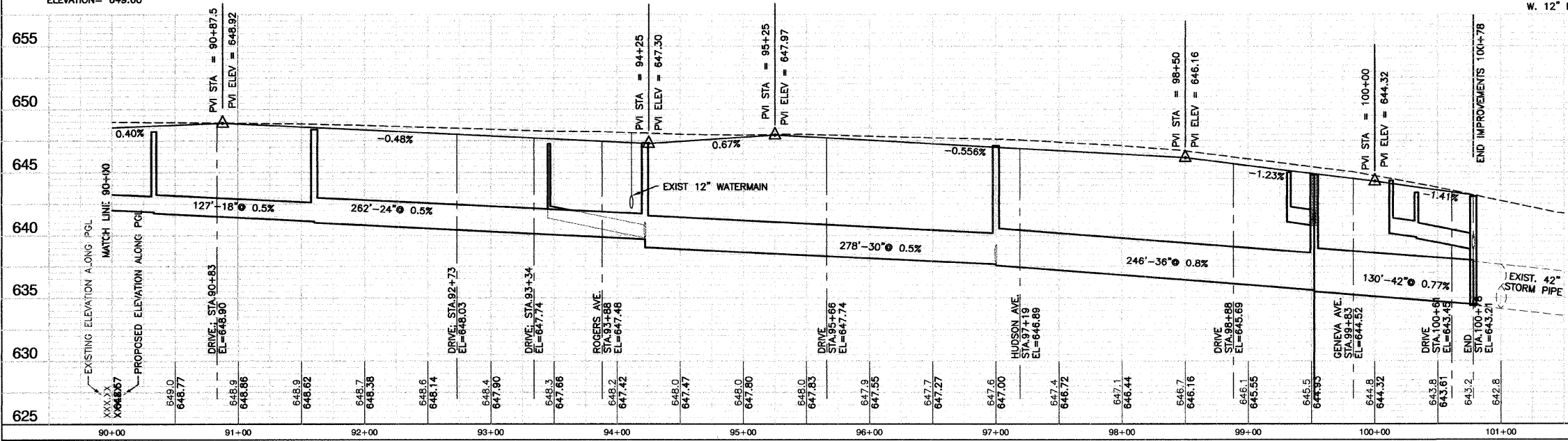
- PROPOSED STORM PIPE**
- 08 EXISTING 10" STORM SEWER
 - 09 127'-18" SST2 @ 0.5% (37.0)
 - 10 262'-24" SST2-WMQP @ 0.5% (246.8)
 - 11 75'-12" SST2-WMQP @ 2% (55.6)
 - 12 14'-15" SST2-WMQP @ 1.5% (12.1)
 - 13 278'-30" SST2 @ 0.5% (346.7)
 - 14 17'-18" SST2-WMQP @ 2% (19.1)
 - 15 16'-18" SST2-WMQP @ 2% (11.3)
 - 16 43'-18" SST2 @ 1.5% (10.8)
 - 17 26'-12" SST1 @ 2% (3.4)
 - 18 28'-15" SST1 @ 2% (5.9)
 - 19 28'-15" SST1-WMQP @ 1% (3.4)
 - 20 246'-36" SST2 @ 0.8% (340.2)
 - 21 14'-15" SST1-WMQP @ 2% (2.7)
 - 22 12'-15" SST1 @ 2% (2.8)
 - 23 130'-42" SST2 @ 0.77% (172.5)
 - 24 45'-15" SST2 @ 2% (9.0)
 - 25 14'-15" SST1-WMQP @ 2% (2.0)

- PROPOSED STRUCTURES**
- 08 STA. 90+33 (32' LT.)
EX. CB
EX. RIM EL.=648.01±
EX. 10" FL.=643.96±
 - 09 STA. 90+33 (8' LT.)
MH TA 4'DIA. T1F CL
RIM EL.=648.25
EX. N. 10" FL.=643.48±
W. 15" FL.=641.88
E. 18" FL.=641.78
 - 10 STA. 91+60 (8' LT.)
MH TA 5'DIA. T1F CL
RIM EL.=648.41
EX. N. 18" FL.=642.43±
W. 18" FL.=641.14
E. 24" FL.=641.04
 - 11 STA. 93+46 (20' LT.) E/W
STA. 1+20 (33' RT) N/S
MH TA 4'DIA. T24 F&G
RIM EL.=646.88
N. 15" FL.=640.14
S. 15" FL.=639.77
W. 12" FL.=639.87
 - 12 STA. 94+22 (22' LT.) E/W
STA. 1+22 (33' RT) N/S
MH TA 4'DIA. T24 F&G
RIM EL.=646.88
N. 15" FL.=640.14
S. 15" FL.=639.77
W. 12" FL.=639.87
 - 13 STA. 94+22 (8' LT.)
MH TA 5'DIA. T1F CL
RIM EL.=647.35
N. 15" FL.=639.56
W. 24" FL.=639.73
E. 30" FL.=639.09
 - 14 STA. 97+00 (8' LT.)
MH TA 5'DIA. T1F CL
RIM EL.=647.12
N. 18" FL.=637.74
W. 30" FL.=637.70
E. 36" FL.=637.60
 - 15 STA. 96+94.40 (24' LT.)
CB TA 4'DIA. T24 F&G
RIM EL.=646.88
NE. 18" FL.=638.18
S. 18" FL.=638.08
 - 16 STA. 97+04.66 (37' LT.)
MH TA 4'DIA. T11 F&G
RIM EL.=647.06
N. 18" FL.=642.52
E. 15" FL.=642.41
SW. 18" FL.=638.50
 - 17 STA. 97+06 (80' LT.)
MH TA 4'DIA. T11 F&G
RIM EL.=647.67
E. 12" FL.=643.89
N. 18" STUB FL.=643.27
S. 18" FL.=643.17
 - 18 STA. 87+31 (80' LT.)
CB TA 2'DIA. T11 F&G
RIM EL.=647.41
12" FL.=644.41
 - 19 STA. 97+32.84 (37' LT.)
CB TA 4'DIA. T11 F&G
RIM EL.=646.76
SE. 12" FL.=643.07
W. 15" FL.=642.97
 - 20 STA. 97+55.33 (20' LT.)
INL TA T24 F&G
RIM EL.=646.52
12" FL.=643.35
 - 21 STA. 99+32 (20' LT.)
INL TA T24 F&G
RIM EL.=645.02
12" FL.=641.06
 - 22 STA. 99+45.97 (20' LT.)
CB TA 4'DIA. T24 F&G
RIM EL.=644.76
W. 36" FL.=640.78
S. 12" FL.=640.68
 - 23 STA. 99+46 (8' LT.)
MH TA 6'DIA. T1F CL
RIM EL.=644.89
N. 15" FL.=640.44
W. 36" FL.=635.62
E. 42" FL.=635.52
 - 24 STA. 100+19.32 (20' LT.)
INL TA T24 F&G
RIM EL.=643.71
E. 12" FL.=640.16
 - 25 STA. 100+33 (20' LT.)
CB TA 4'DIA. T24 F&G
RIM EL.=643.41
W. 12" FL.=639.88
SE. 15" FL.=639.77
 - 33 STA. 100+76 (5' LT.)
MH TA 6'DIA. T1F CL
RIM EL.=643.15
NW. 15" FL.=638.88
W. 42" FL.=634.52
EXIST 42" FL.=634.42±

BENCHMARKS:
BENCHMARK #5
ARROW ON HYDRANT FLANGE AT N.E. CORNER ROGERS ROAD AND NORMANTOWN ROAD
ELEVATION= 649.91
BENCHMARK #7
ARROW ON HYDRANT FLANGE OF 1ST HYDRANT EAST OF GENEVA AVENUE, NORTH SIDE OF NORMANTOWN ROAD
ELEVATION= 649.60

REMOVAL LEGEND
[AB] ABANDON STRUCTURE OR PIPE
[F] FILL STRUCTURE OR PIPE
[R] REMOVE
[ADJ] ADJUST FRAME & LID
[EAB] EXISTING ABANDONED PIPE

- NOTE:**
- OFFSETS ARE FROM C. R.O.W.
 - QUANTITIES IN () ARE TRENCH BACKFILL
 - ALL RIM ELEVATIONS OF STRUCTURES IN THE PROPOSED CURB LINE ARE GIVEN TO THE EDGE OF PAVEMENT. ALL OTHER RIM ELEVATIONS ARE GIVEN TO THE CENTER OF STRUCTURES.
 - W.M.Q.P. = WATER MAIN QUALITY PIPE
 - STORM FLOWS TO BE MAINTAINED AT ALL TIMES.



REVISIONS

NO.	NAME	DATE
1	IDOT REVIEW	2-24-2009

ILLINOIS DEPARTMENT OF TRANSPORTATION

**NORMANTOWN ROAD RECONSTRUCTION
ROMEVILLE
DRAINAGE AND UTILITIES
NORMANTOWN RD. STA 90+00 TO STA 101+00**

SCALE: VERT. 1" = 5'
HORIZ. 1" = 50'

DATE 01/19/2009 DRAWN BY JJB
CHECKED BY BDB