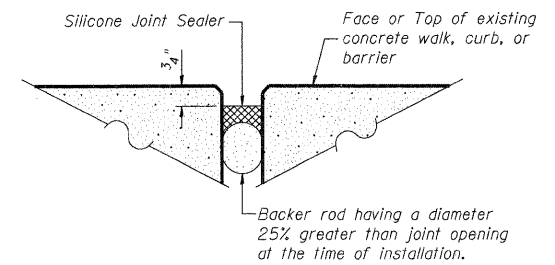
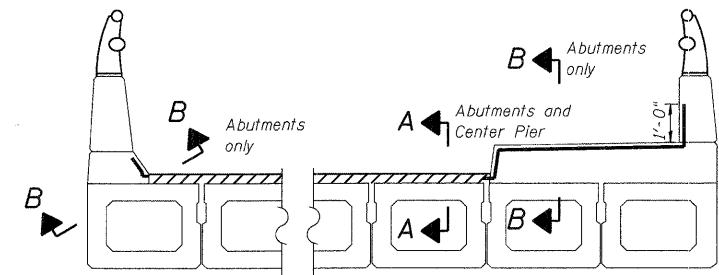


SECTION A-A



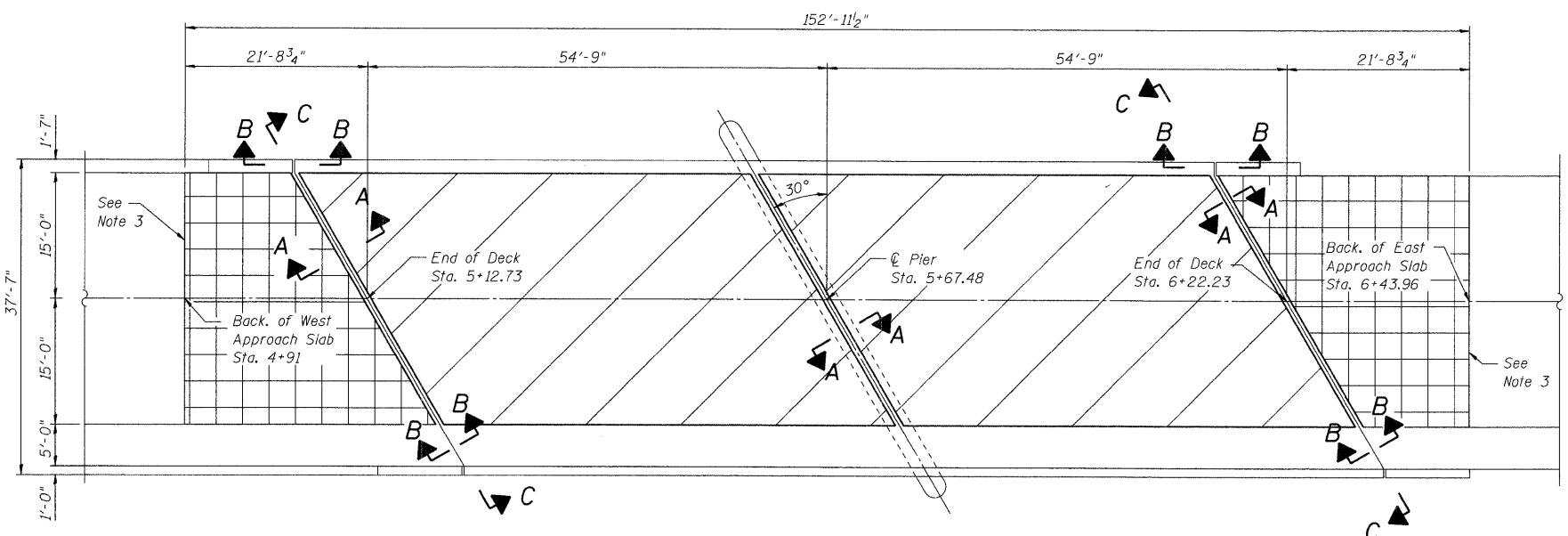
SECTION B-B



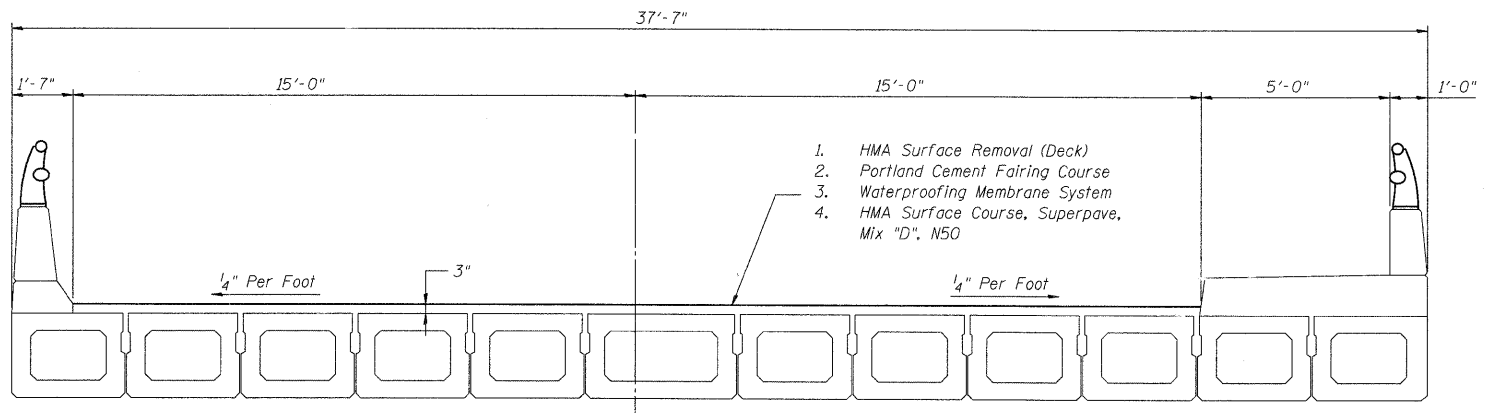
SECTION C-C
Each end of bridge

NOTES:

- HMA Surface Course shall be constructed according to Section 582, except for no calibration strip on the bridge deck.
- The cost of removing the existing Neoprene Expansion Joint shall be included in the cost of Silicone Joint Sealer.
- The existing Approach Slabs were constructed of reinforced concrete with an asphalt surface course.



PLAN VIEW



CROSS SECTION

BILL OF MATERIAL

Item	Unit	Quantity
Hot-Mix Asphalt Surface Course, Superpave, Mix "D", N50	Tons	88
Hot-Mix Asphalt Surface Removal, 2-1/2"	Sq. Yds.	145
Hot-Mix Asphalt Surface Removal (Deck)	Sq. Yds.	366
Waterproofing Membrane System	Sq. Ft.	3294
Portland Cement Mortar Fairing Course	Foot	1095
Silicone Joint Sealer	Foot	118
Polymer Concrete	Cu. Ft.	21.8

LEGEND:

- Limits of Hot Mix Asphalt Surface Removal (Deck), Waterproof Membrane System, and Portland Cement Mortar Fairing Course assumed for 10 joints 109.5' long (each).
- Limits of Hot Mix Asphalt Surface Removal, 2-1/2".

	USER NAME = jguerrero	DESIGNED - MGH	REVISED -	VILLAGE OF LAKE IN THE HILLS 2009 LAPP RESURFACING PROGRAM	OAK STREET OVER CRYSTAL CREEK SN 056-6403		F.A. RTE.	SECTION	COUNTY	TOTAL SHEETS	SHEET NO.
	PLOT SCALE = N/A	CHECKED - DVC	REVISED -		SCALE: N/A	SHEET NO. OF SHEETS	STA. 4+91 TO STA. 6+43.96	08-00032-00-RS	MCHENRY	21	15
	PLOT DATE = 4/9/2009	DATE - TBD	REVISED -				CONTRACT NO. 63164		FED. ROAD DIST. NO. ILLINOIS FED. AID PROJECT		