



CHAIN IL82 DESCRIPTION

Chain IL82 contains:
310 CUR 200 210 CUR 220 230 CUR 240 250 CUR 260 CUR 270 280 CUR 290 10

Beginning chain IL82 description

Point 310 N 1,686,670.0404 E 2,296,953.0212 Sta 544+36.8000

Course from 310 to PC 200 0° 11' 52.9395" Dist 3,573.5528

Curve Data

Curve 200
P.I. Station 585+53.9859 N 1,690,787.2018 E 2,296,967.2519
Delta = 0° 21' 44.7179" (LT)
Degree = 0° 02' 00.0002"
Tangent = 543.6332
Length = 1,087.2628
Radius = 171,886.9999
External = 0.8597
Long Chord = 1,087.2609
Mid. Ord. = 0.8597
P.C. Station 580+10.3528 N 1,690,243.5718 E 2,296,965.3729
P.T. Station 590+97.6155 N 1,691,330.8327 E 2,296,965.6922
C.C. N 1,690,837.6858 E 2,125,079.3997
Back = 0° 11' 52.9395"
Ahead = 359° 50' 08.2217"
Chord Bear = 0° 01' 00.5806"

Course from PT 200 to 210 359° 50' 08.2217" Dist 2,097.1956

Point 210 N 1,693,428.0197 E 2,296,959.6753 Sta 611+94.8111

Course from 210 to PC 220 359° 43' 49.7963" Dist 4,047.8477

Curve Data

Curve 220
P.I. Station 656+39.6999 N 1,697,872.8594 E 2,296,938.7680
Delta = 0° 37' 51.6843" (RT)
Degree = 0° 04' 46.0796"
Tangent = 397.0411
Length = 794.0743
Radius = 72,100.4990
External = 1.0932
Long Chord = 794.0703
Mid. Ord. = 1.0932
P.C. Station 652+42.6588 N 1,697,475.8226 E 2,296,940.6356
P.T. Station 660+36.7331 N 1,698,269.8926 E 2,296,941.2733
C.C. N 1,697,814.9591 E 2,369,040.3370
Back = 359° 43' 49.7963"
Ahead = 0° 21' 41.4806"
Chord Bear = 0° 02' 45.6385"

Course from PT 220 to 230 0° 21' 41.4806" Dist 4,946.9845

Point 230 N 1,703,216.7786 E 2,296,972.4873 Sta 709+83.7176

Course from 230 to PC 240 0° 29' 46.3397" Dist 5,047.5240

Curve Data

Curve 240
P.I. Station 765+31.2415 N 1,708,764.0946 E 2,297,020.5306
Delta = 0° 17' 37.1732" (LT)
Degree = 0° 01' 45.7175"
Tangent = 500.0000
Length = 999.9978
Radius = 195,109.3373
External = 0.6407
Long Chord = 999.9967
Mid. Ord. = 0.6407
P.C. Station 760+31.2415 N 1,708,264.1133 E 2,297,016.2004
P.T. Station 770+31.2393 N 1,709,264.0914 E 2,297,022.2981
C.C. N 1,709,953.8209 E 2,101,914.1800
Back = 0° 29' 46.3397"
Ahead = 0° 12' 09.1666"
Chord Bear = 0° 20' 57.7531"

Course from PT 240 to 250 0° 12' 09.1666" Dist 9,713.4707

Point 250 N 1,718,977.5015 E 2,297,056.6362 Sta 867+44.7101

Course from 250 to PC 260 0° 20' 15.9982" Dist 5,457.6237

Curve Data

Curve 260
P.I. Station 924+00.3603 N 1,724,633.0535 E 2,297,089.9779
Delta = 11° 59' 46.4759" (RT)
Degree = 3° 02' 24.2203"
Tangent = 198.0266
Length = 394.6053
Radius = 1,884.6917
External = 10.3749
Long Chord = 393.8849
Mid. Ord. = 10.3181
P.C. Station 922+02.3337 N 1,724,435.0303 E 2,297,088.8104
P.T. Station 925+96.9391 N 1,724,826.5094 E 2,297,132.2784
C.C. N 1,724,423.9195 E 2,298,973.4693
Back = 0° 20' 15.9982"
Ahead = 12° 20' 02.4741"
Chord Bear = 6° 20' 09.2362"

Course from PT 260 to PC 270 12° 20' 02.4741" Dist 3,040.8219

HORIZONTAL AND VERTICAL CONTROL

Curve Data

Curve 270
P.I. Station 958+89.5426 N 1,728,043.1161 E 2,297,835.6131
Delta = 0° 37' 37.5029" (LT)
Degree = 0° 07' 28.3102"
Tangent = 251.7816
Length = 503.5582
Radius = 46,009.3944
External = 0.6889
Long Chord = 503.5557
Mid. Ord. = 0.6889
P.C. Station 956+37.7610 N 1,727,797.1459 E 2,297,781.8299
P.T. Station 961+41.3192 N 1,728,289.6602 E 2,297,886.7010
C.C. N 1,737,625.2352 E 2,252,834.3824
Back = 12° 20' 02.4741"
Ahead = 11° 42' 24.9713"
Chord Bear = 12° 01' 13.7227"

Course from PT 270 to 280 11° 42' 24.9713" Dist 1,877.4576

Point 280 N 1,730,128.0634 E 2,298,267.6482 Sta 980+18.7768

Course from 280 to PC 290 11° 44' 24.7293" Dist 3,762.5977

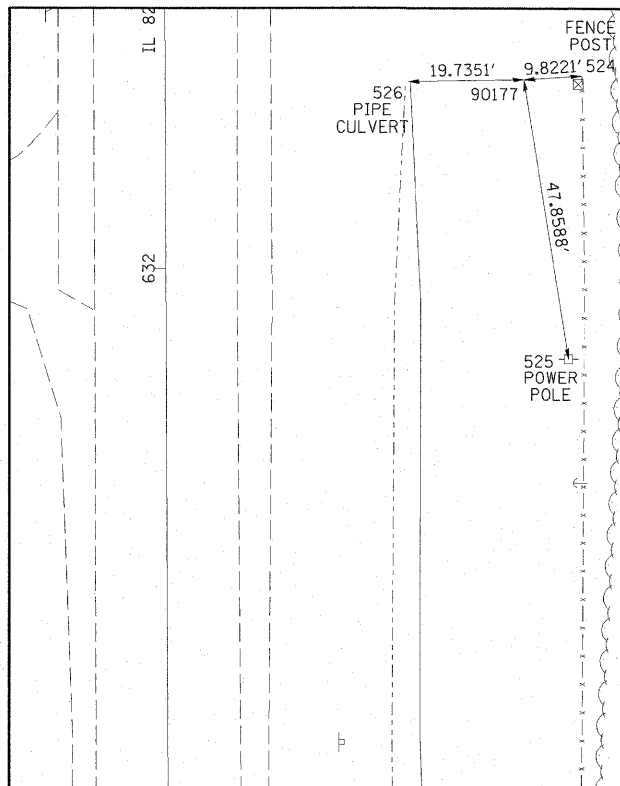
Curve Data

Curve 290
P.I. Station 1020+46.4385 N 1,734,071.4676 E 2,299,087.1740
Delta = 15° 39' 04.6343" (LT)
Degree = 2° 58' 15.0800"
Tangent = 265.0641
Length = 526.8276
Radius = 1,928.5953
External = 18.1299
Long Chord = 525.1911
Mid. Ord. = 17.9610
P.C. Station 1017+81.3744 N 1,733,811.9485 E 2,299,033.2402
P.T. Station 1023+08.2020 N 1,734,335.9144 E 2,299,069.0944
C.C. N 1,734,204.3682 E 2,297,144.9906
Back = 11° 44' 24.7293"
Ahead = 356° 05' 20.0949"
Chord Bear = 3° 54' 52.4121"

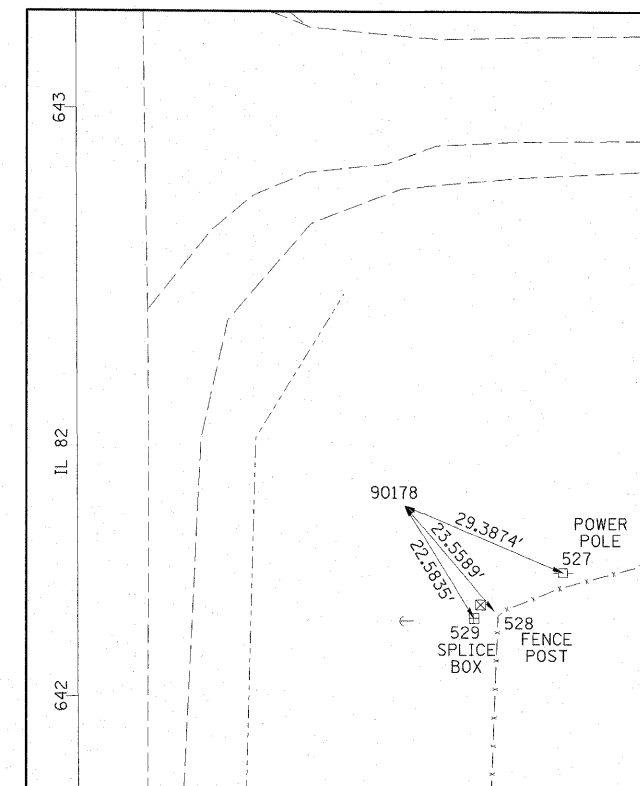
Course from PT 290 to 10 356° 05' 20.0949" Dist 1,628.2647

Point 10 N 1,735,960.3870 E 2,298,958.0332 Sta 1039+36.4667

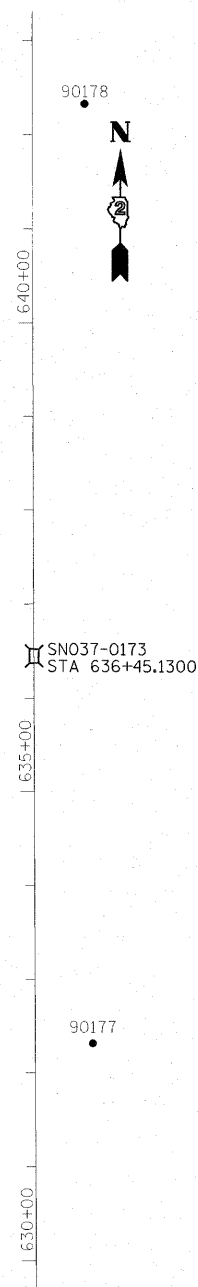
Ending chain IL82 description



HORIZONTAL CONTROL POINT NO. 90177



HORIZONTAL CONTROL POINT NO. 90178



HORIZONTAL CONTROL POINTS							
POINT	NORTH	EAST	ELEVATION	CHAIN	STATION	OFFSET	DESCRIPTION
90177	1695465.1700	2297011.3910	699.4420	IL82	632+31.6956	61.2972 RT	PIN
90178	1696465.8300	2297001.2240	716.7390	IL82	642+32.3924	55.8371 RT	PIN

BENCH MARKS							
POINT	NORTH	EAST	ELEVATION	CHAIN	STATION	OFFSET	DESCRIPTION
477	1695464.4160	2297020.6370	701.2520	IL82	632+30.8981	70.5395 RT	RIGHT OF WAY MARKER
478	1696448.8960	2297014.2250	719.9430	IL82	642+15.3974	68.7583 RT	RIGHT OF WAY MARKER

REFERENCE TIES				
POINT	CHAIN	STATION	OFFSET	DESCRIPTION
524	IL82	632+32.2775	71.1020	FENCE POST
525	IL82	631+84.4181	68.7339	PP
526	IL82	632+31.4394	41.5638	PIPE CULVERT
527	IL82	642+20.7423	82.8166	PP
528	IL82	642+14.3688	71.0085	FENCE POST
529	IL82	642+13.1188	67.6075	TELEPHONE SPLICE BOX