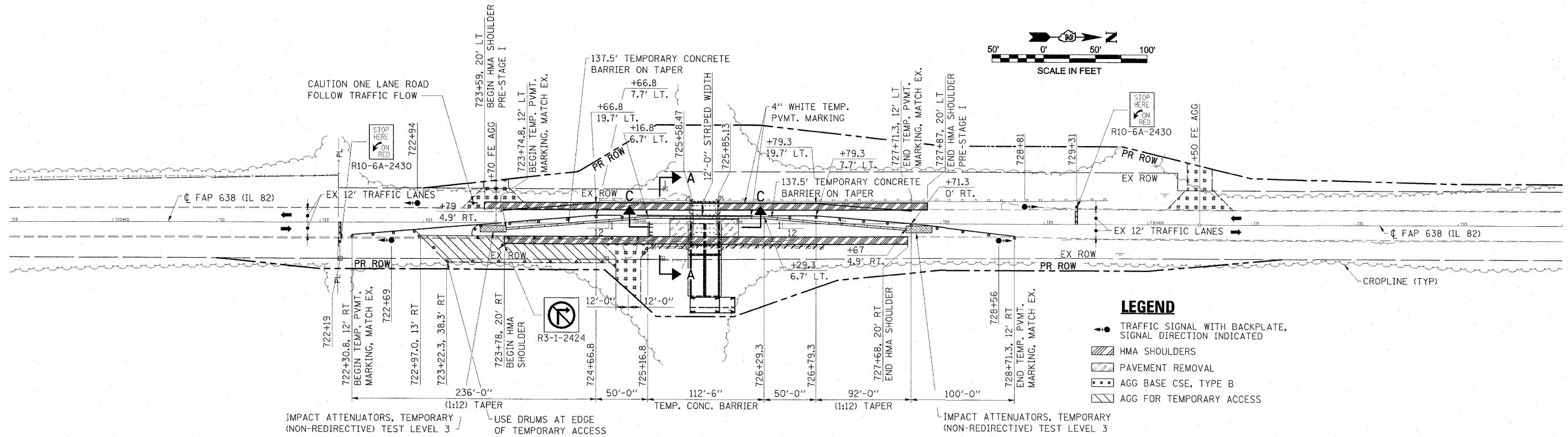


GENERAL NOTES

1. TRAFFIC CONTROL SHALL BE ERECTED AS SHOWN AND ACCORDING TO "TRAFFIC CONTROL AND PROTECTION, STANDARD 701321."
2. SEE SPECIAL PROVISIONS FOR ADDITIONAL TRAFFIC CONTROL REQUIREMENTS.
3. COORDINATE LOCATION OF SIGNALS WITH FINAL WORK AS DIRECTED BY THE ENGINEER.
4. CONSTRUCT TEMPORARY RUMBLE STRIPS AT LOCATIONS SHOWN ON STANDARD 701321.
5. ADDITIONAL SIGNAGE AND BARRICADES SHOWN FOR SIDE-ROADS AND ENTRANCES SHALL BE INCLUDED IN THE COST OF STANDARD 701321.



FILE NAME = 0264428-sht-staging01.dgn	USER NAME = H4S	DESIGNED - JMS	REVISED -	STATE OF ILLINOIS DEPARTMENT OF TRANSPORTATION	STAGE I CONSTRUCTION	F.A.P. RTE. 638	SECTION 136BR-1	COUNTY HENRY	TOTAL SHEETS 67	SHEET NO. 35		
PLOT SCALE = 0.2839" / IN.	CHECKED - ELH	REVISIONS	DATE - 3/20/09			SCALE: 1"=50'-0"	SHEET NO. 1 OF 1 SHEETS	STA. 719+00	TO STA. 734+00	CONTRACT NO. 64428		
PLOT DATE = 3/24/2009 6:17:14 AM	DATE	REVISIONS				FED. ROAD DIST. NO. ILLINOIS FED. AID PROJECT						