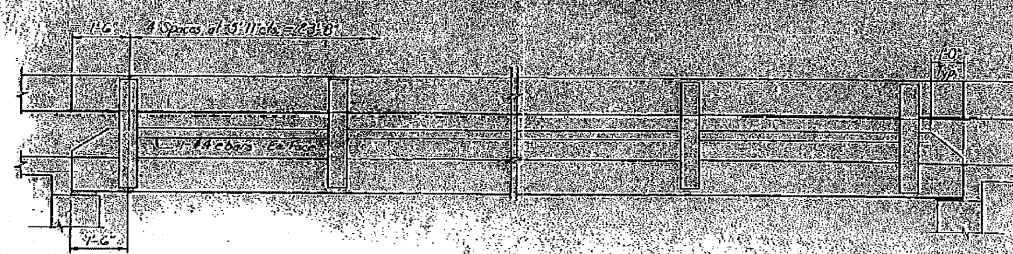
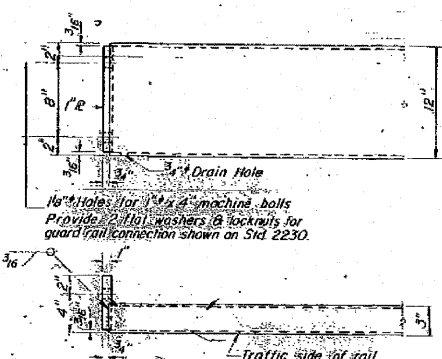
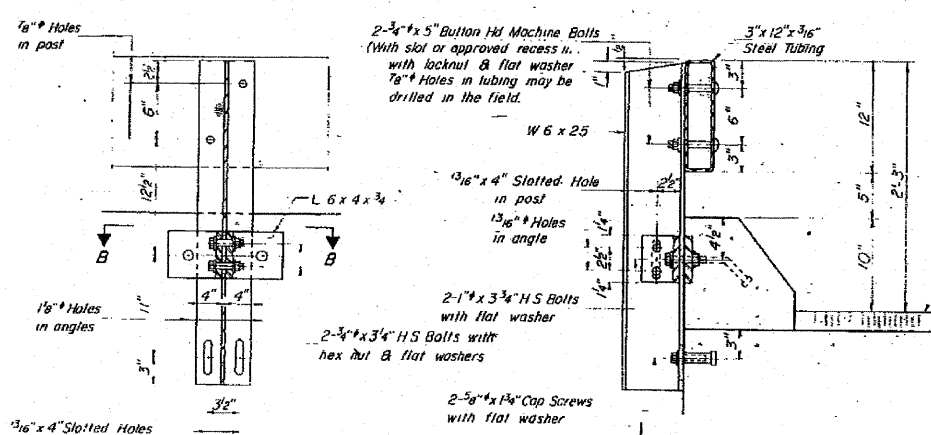


DEPARTMENT OF TRANSPORTATION

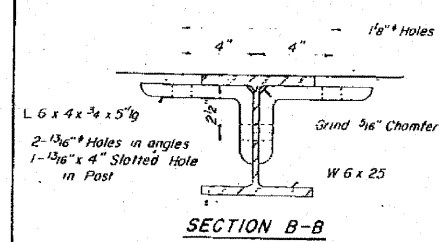
NO.	REV.	DATE	BY	CHKD.
1			HENRY	
2				
3				
4				
5				



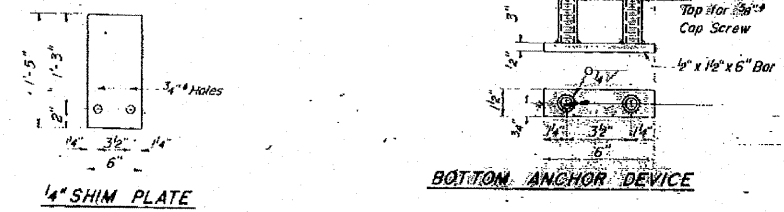
ELEVATION



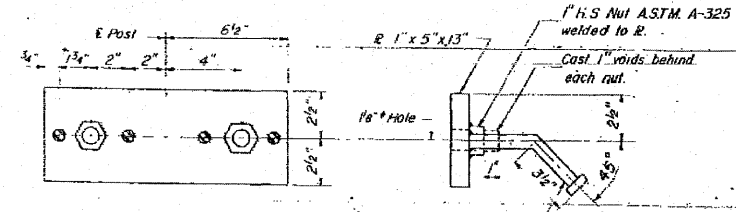
END OF RAIL DETAILS



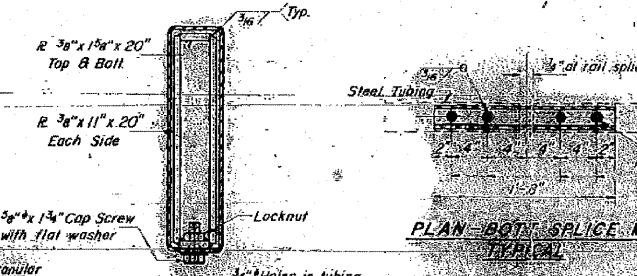
SECTION B-B



BOTTOM ANCHOR DEVICE



TOP ANCHOR DEVICE



PLAN - BOTTOM SPLICE R TYPICAL

SECTIONS AT RAIL SPLICE

**NOTES**

Hollow structural steel tubing shall conform to the requirements of ASTM designation A-500 Grade B or A-501 Structural Steel Tubing.

All other steel shapes and plates shall conform to the requirements of ASTM designation A-36 except posts shall conform to ASTM A-441.

Bolts, cap screws, and nuts shall conform to the requirements of ASTM designation A-307 except for high strength bolts, nuts and washers noted which shall conform to ASTM designation A-325.

All bolts, nuts, cap screws, washers and lock washers shall be galvanized in accordance with ASTM designation A-153.

Steel posts, railing rail splices, anchor devices and angles shall be galvanized after shop fabrication in accordance with ASTM designation A-123 and A-395. Galvanized rail shall not be painted.

Railing shall be in accordance with Section 508 of the Standard Specifications, except as noted, and shall be paid for at the contract unit price per lined foot for STEEL RAILING, TYPE T.

All field drilled holes shall be coated with an approved zinc rich paint before erection.

The lower portion of the post flange in contact with concrete shall receive two coats of asphalt paint conforming to Section 714.08, Type B or place 1/2" fabric bearing pad between the post and concrete.

The 1/2" high strength bolts used to connect the 6 x 4 x 3/4 angles to the post shall be tightened in accordance with Article 507.04(3) of the Standard Specifications. The 1/2" high strength bolts connecting the angles to the concrete shall be tightened to a snug fit and given an additional 1/4 turn.

For multi-span bridges, sufficient 1/2" x 6 x 1/2" galvanized steel shims shall be provided to align rail between adjacent spans. Cast incidental to steel railing.

**CURB & RAIL**  
**BILL OF MATERIAL**

Qty	No.	Size	Length	Shape
	1	1/2"	24.2'	
	2	1/2"	24.2'	
	3	1/2"	24.2'	
	4	1/2"	24.2'	
	5	1/2"	24.2'	
	6	1/2"	24.2'	
	7	1/2"	24.2'	
	8	1/2"	24.2'	
	9	1/2"	24.2'	
	10	1/2"	24.2'	
	11	1/2"	24.2'	
	12	1/2"	24.2'	
	13	1/2"	24.2'	
	14	1/2"	24.2'	
	15	1/2"	24.2'	
	16	1/2"	24.2'	
	17	1/2"	24.2'	
	18	1/2"	24.2'	
	19	1/2"	24.2'	
	20	1/2"	24.2'	
	21	1/2"	24.2'	
	22	1/2"	24.2'	
	23	1/2"	24.2'	
	24	1/2"	24.2'	
	25	1/2"	24.2'	
	26	1/2"	24.2'	
	27	1/2"	24.2'	
	28	1/2"	24.2'	
	29	1/2"	24.2'	
	30	1/2"	24.2'	
	31	1/2"	24.2'	
	32	1/2"	24.2'	
	33	1/2"	24.2'	
	34	1/2"	24.2'	
	35	1/2"	24.2'	
	36	1/2"	24.2'	
	37	1/2"	24.2'	
	38	1/2"	24.2'	
	39	1/2"	24.2'	
	40	1/2"	24.2'	
	41	1/2"	24.2'	
	42	1/2"	24.2'	
	43	1/2"	24.2'	
	44	1/2"	24.2'	
	45	1/2"	24.2'	
	46	1/2"	24.2'	
	47	1/2"	24.2'	
	48	1/2"	24.2'	
	49	1/2"	24.2'	
	50	1/2"	24.2'	
	51	1/2"	24.2'	
	52	1/2"	24.2'	
	53	1/2"	24.2'	
	54	1/2"	24.2'	
	55	1/2"	24.2'	
	56	1/2"	24.2'	
	57	1/2"	24.2'	
	58	1/2"	24.2'	
	59	1/2"	24.2'	
	60	1/2"	24.2'	
	61	1/2"	24.2'	
	62	1/2"	24.2'	
	63	1/2"	24.2'	
	64	1/2"	24.2'	
	65	1/2"	24.2'	
	66	1/2"	24.2'	
	67	1/2"	24.2'	
	68	1/2"	24.2'	
	69	1/2"	24.2'	
	70	1/2"	24.2'	
	71	1/2"	24.2'	
	72	1/2"	24.2'	
	73	1/2"	24.2'	
	74	1/2"	24.2'	
	75	1/2"	24.2'	
	76	1/2"	24.2'	
	77	1/2"	24.2'	
	78	1/2"	24.2'	
	79	1/2"	24.2'	
	80	1/2"	24.2'	
	81	1/2"	24.2'	
	82	1/2"	24.2'	
	83	1/2"	24.2'	
	84	1/2"	24.2'	
	85	1/2"	24.2'	
	86	1/2"	24.2'	
	87	1/2"	24.2'	
	88	1/2"	24.2'	
	89	1/2"	24.2'	
	90	1/2"	24.2'	
	91	1/2"	24.2'	
	92	1/2"	24.2'	
	93	1/2"	24.2'	
	94	1/2"	24.2'	
	95	1/2"	24.2'	
	96	1/2"	24.2'	
	97	1/2"	24.2'	
	98	1/2"	24.2'	
	99	1/2"	24.2'	
	100	1/2"	24.2'	

**TYPE S**  
**STEEL RAILING**  
SECTION 508.08  
HENRY COUNTY  
SIA 041-01

DESIGNED: Steve Lindsey  
CHECKED: Steve Lindsey  
DRAWN: S.E. Lindes  
CHECKED: S.E. Lindes

EXAMINED: Max 26 1974  
PASSED: H.C. Bruens  
APPROVED: Harry R. Hanley

R-24 12-10-71 (1'-3" Maximum Post Spacing)