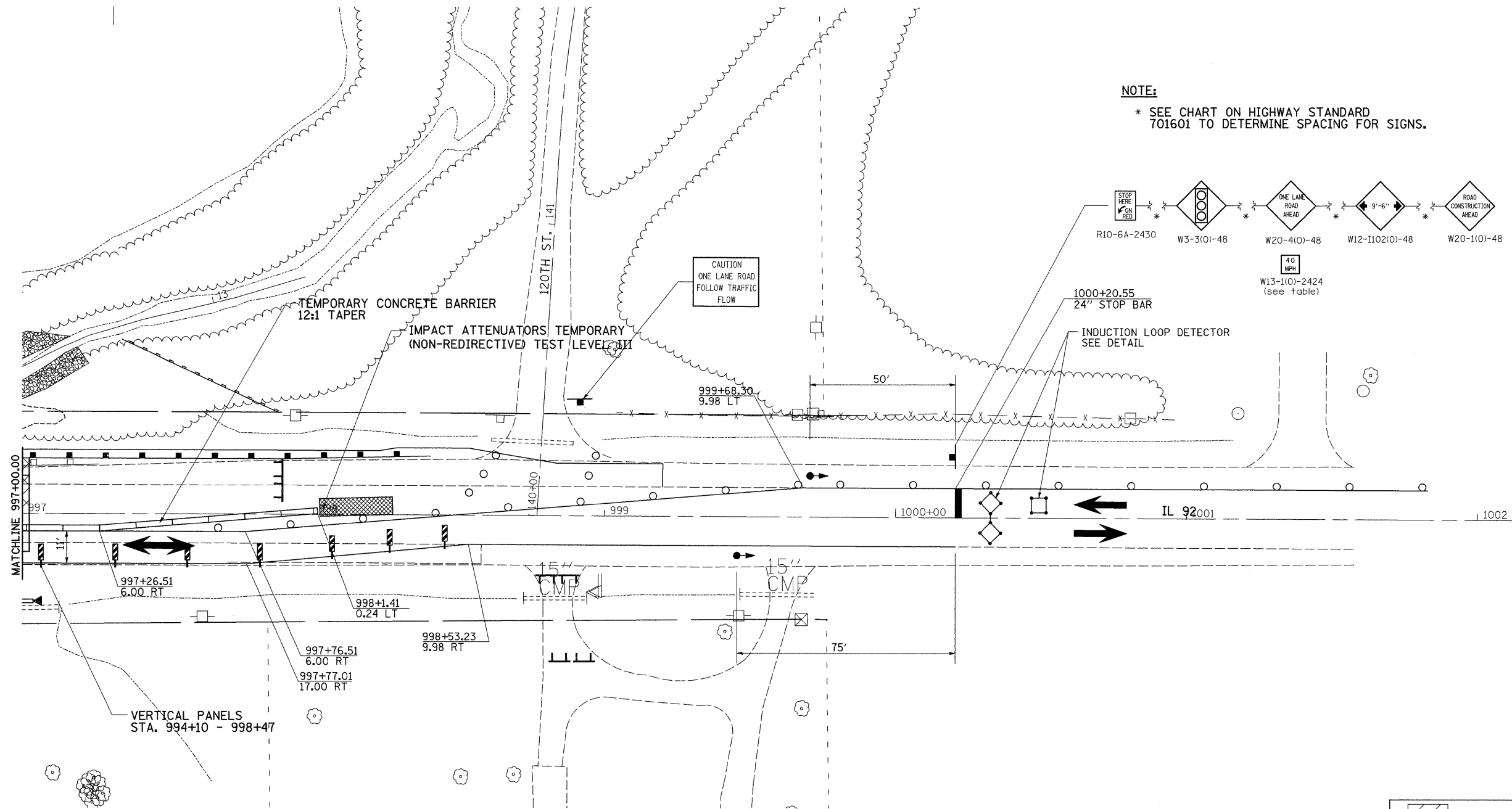


# STAGE 2



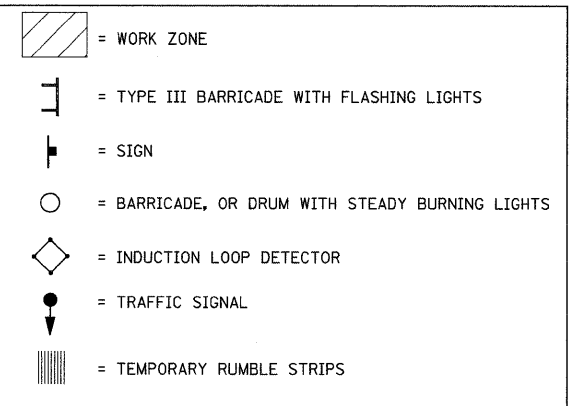
**NOTE:**

\* SEE CHART ON HIGHWAY STANDARD 701601 TO DETERMINE SPACING FOR SIGNS.



**STAGE 2 NOTES**

1. USE STANDARD 701321 FOR CULVERT WORK.
2. CONSTRUCT CULVERT LT TO STAGE CONSTRUCTION LINE.
3. PLACE PROPOSED SHOULDERS LT FROM STA 993+75 TO STA 999+20 USING STANDARD 701326.
4. PLACE PROPOSED GUARDRAIL LT.
5. GRADE AND SHAPE SLOPES.



FILE NAME =	USER NAME = hensonke	DESIGNED -	REVISED -	<b>STATE OF ILLINOIS DEPARTMENT OF TRANSPORTATION</b>	<b>STAGING DETAIL SHEET</b>				F.A.P. RTE.	SECTION	COUNTY	TOTAL SHEETS	SHEET NO.		
ct\pw_work\pwsdot\hensonke\dms34329\d1001stg.dgn		DRAWN -	REVISED -		SCALE:	SHEET NO.	OF	SHEETS	STA.	TO STA.	599	103MFT-T	ROCK ISLAND	55	21
		PLOT SCALE = 28.0000 ft / IN.	CHECKED -		REVISED -										
		PLOT DATE = Thu Dec 04 13:36:16 2008	DATE -		REVISED -										
											CONTRACT NO. 64737				
											ILLINOIS FED. AID PROJECT				