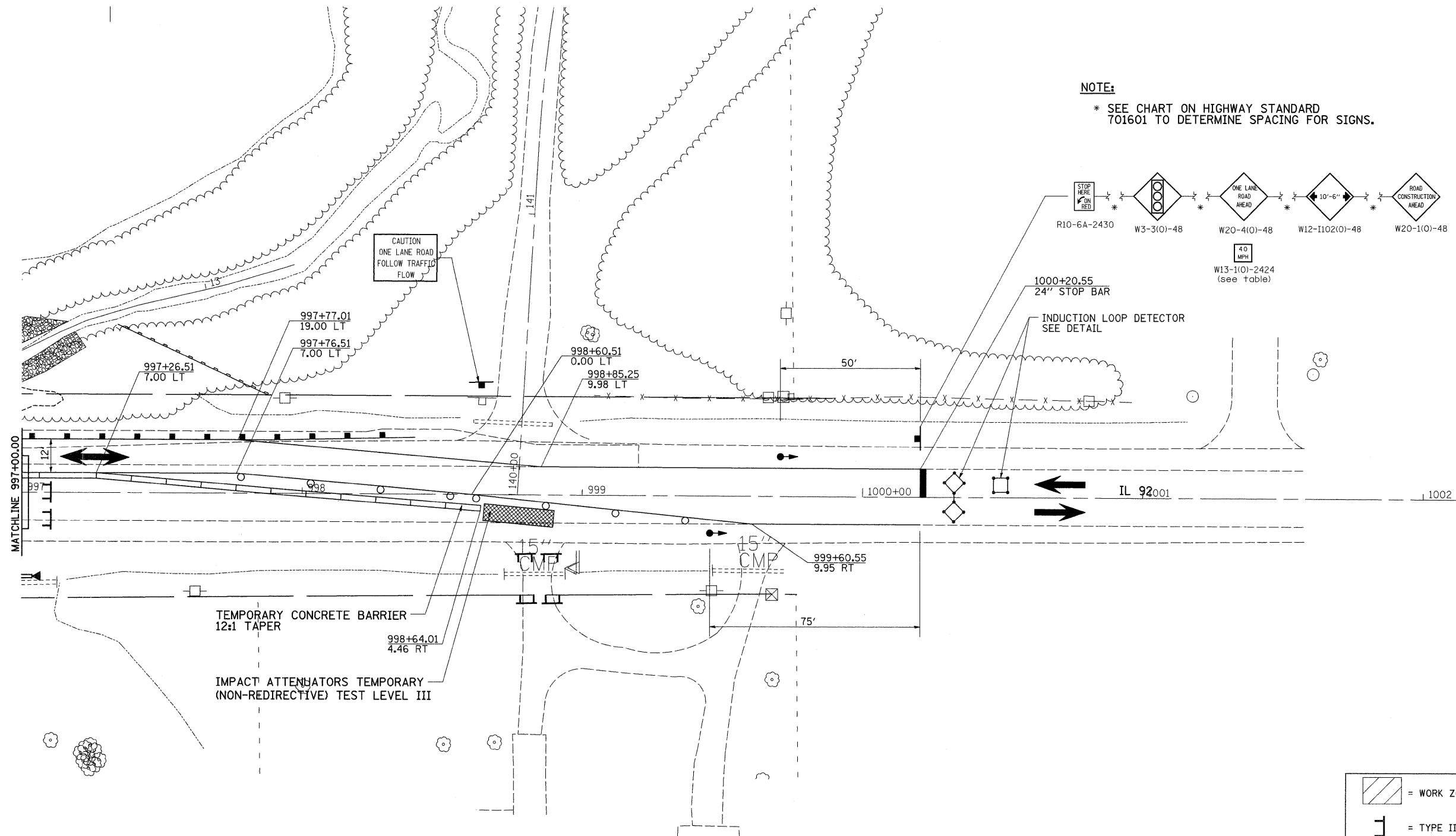


STAGE 3



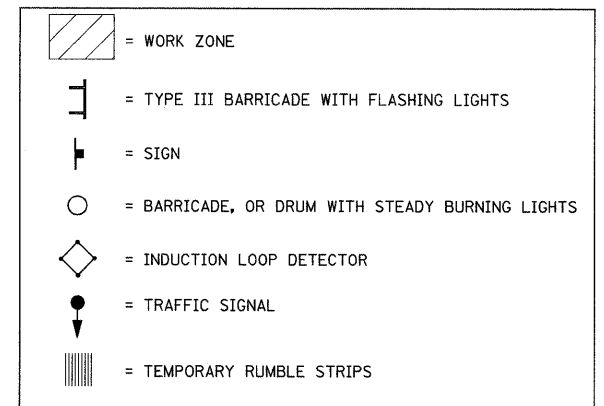
NOTE:

* SEE CHART ON HIGHWAY STANDARD 701601 TO DETERMINE SPACING FOR SIGNS.



STAGE 3 NOTES

1. USE STANDARD 701321 FOR CULVERT WORK.
2. CONSTRUCT CULVERT RT TO STAGE CONSTRUCTION LINE.
3. PLACE PROPOSED SHOULDERS RT FROM STA 994+40 TO STA 997+58.58
4. CONSTRUCT FE AND PE ACCORDING TO PLANS.
5. GRADE AND SHAPE SLOPES.



FILE NAME =	USER NAME = hensonke	DESIGNED -	REVISED -	STATE OF ILLINOIS DEPARTMENT OF TRANSPORTATION	STAGING DETAIL SHEET				F.A.P. RTE.	SECTION	COUNTY	TOTAL SHEETS	SHEET NO.		
ct:\pw_work\pw\dot\hensonke\dms34329\d10801stg.dgn		DRAWN -	REVISED -		SCALE:	SHEET NO.	OF	SHEETS	STA.	TO STA.	599	103MFT-T	ROCK ISLAND	55	23
		PLOT SCALE = 20,000 ft / IN.	CHECKED -		REVISED -								CONTRACT NO. 64737		
		PLOT DATE = Thu Dec 04 13:36:14 2008	DATE -		REVISED -								ILLINOIS FED. AID PROJECT		