

F.A.P. RTE.	SECTION	COUNTY	TOTAL SHEETS	SHEET NO.
316	2T	OGLE	48	1

A 48+1=49

D-92-003-03



LOCATION OF SECTION INDICATED THUS: -

STATE OF ILLINOIS
DEPARTMENT OF TRANSPORTATION
DIVISION OF HIGHWAYS

**PROPOSED
HIGHWAY PLANS**

FAP 316 (IL 26)
SECTION 2T
PROJECT NHF-0316(036)
OGLE COUNTY



INDEX OF SHEETS

- 1 Cover Sheet
- 2 - 3 Summary of Quantities
- 4 - 5 General Notes
- 6 - 10 Typical Sections
- 11 - 12 Horizontal and Vertical Control
- 13 - 16 Schedule of Quantities
- 17 - 19 Plan and Profile Sheets
- 20 - 22 Erosion Control, Seeding, & R.O.W. Details
- 23 - 32 Grated End Sections and Drop Boxes Details
- 33 - 35A Boring Log Sheets - 35A - RODENT PROTECTION
- 36 Delineator and Post Orientation (Dist Std 37.4)
- 36 Typical Benching on Existing Embankment (Dist Std 50.4)
- 36 Lettering for Name Plate (Dist Std 89.4)
- 37 Erosion Control Details for Silt Fence (Dist Std 29.2)
- 37 Field Tile Junction Vaults 2' & 3' Dia. (Dist Std 30.2)
- 38 Witness Marker & Permanent survey Markers, Type II (Dist Std 66.2)
- 39 Storm Water Pollution Prevention Plan Erosion Control Plan (Dist Std 2.1)
- 40 - 42 Typical Pavement Markings (Dist Std 41.1)
- 43 - 48 Cross Sections

STATE STANDARDS

- 000001 - 05 Standard Symbols, Abbreviations, and Patterns
- 280001 - 04 Temporary Erosion Control Systems
- 420001 - 07 Pavement Joints
- 420701 - 02 Pavement Fabric
- 442201 - 03 Class C & D Patches
- 515001 - 03 Name Plates for Bridges
- 542401 - 01 Metal End Sections for Pipe Culverts
- 666001 - 01 Right-Of-Way Markers
- 667101 - 01 Permanent Survey Markers
- 701006 - 03 Off-Road Operations, 2L, 2W, 4.5m(15') to 600 mm(24") From Pavement Edge
- 701201 - 03 Typical Application of Traffic Control Standard
- 701311 - 03 Lane Closure, 2L, 2W, Moving -Day Only
- 701901 - 01 Traffic Control Devices
- 720011 - 01 Metal Posts for Signs, Markers & Delineators
- 728001 - 01 Telescoping Steel Sign Support
- 729001 - 01 Application Types A and B Metal Posts (for signs and markers)
- 780001 - 02 Typical Pavement Markings

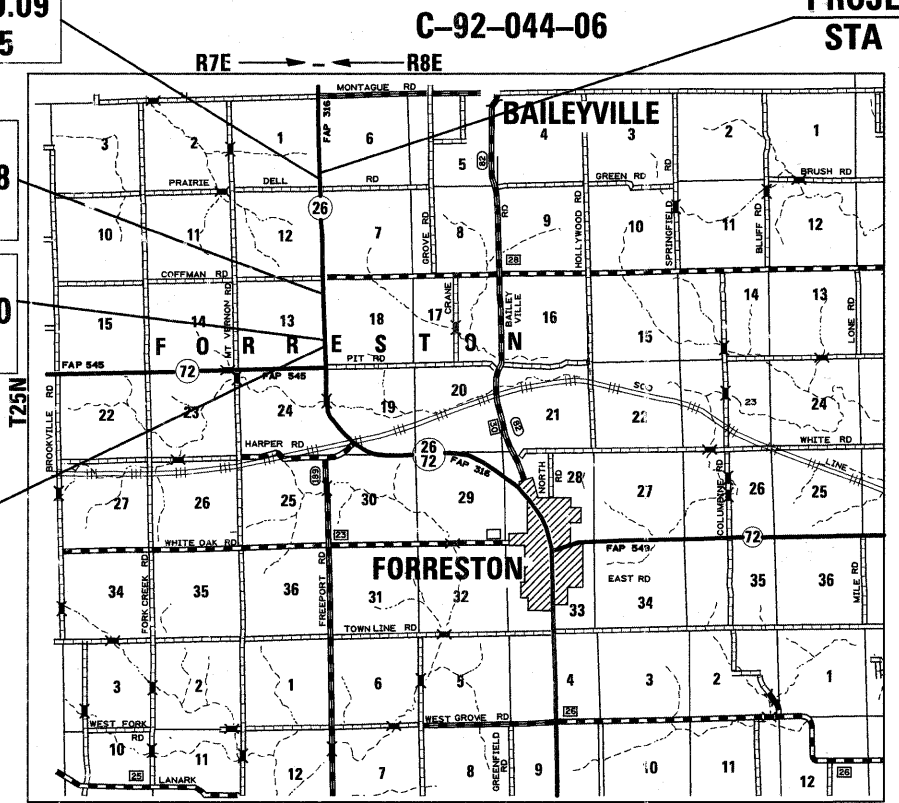
CULVERT # 3
STA 1283 + 39.09
S.N. 071-1225

CULVERT # 2
STA 1201 + 61.08
S.N. 071-1224

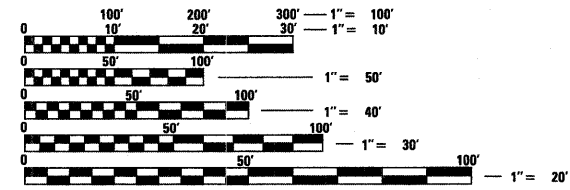
CULVERT # 1
STA 1173 + 89.80
S.N. 071-1223

PROJECT BEGINS
STA 1171 + 50

PROJECT ENDS
STA 1285 + 50



IMPROVEMENT & SECTION BEGINS STA 1171 + 50
IMPROVEMENT & SECTION ENDS STA 1285 + 50



FULL SIZE PLANS HAVE BEEN PREPARED USING STANDARD ENGINEERING SCALES. REDUCED SIZED PLANS WILL NOT CONFORM TO STANDARD SCALES. IN MAKING MEASUREMENTS ON REDUCED PLANS, THE ABOVE SCALES MAY BE USED.

J.U.L.I.E.
JOINT UTILITY LOCATION INFORMATION FOR EXCAVATION
1-800-892-0123

FORRESTON TOWNSHIP 1,6,7,12,13,18

CONTRACT NO. 64851

GROSS LENGTH OF PROJECT = 11400 LIN. FT = 2.159 MI.
NET LENGTH OF PROJECT = 151 LIN. FT = 0.029 MI.

STATE OF ILLINOIS
DEPARTMENT OF TRANSPORTATION
DIVISION OF HIGHWAYS

SUBMITTED MARCH 11 20 09

George F. Ryan
DEPUTY DIRECTOR OF HIGHWAYS, REGION ENGINEER

May 8, 20 09
Charles G. Ingersoll
ENGINEER OF DESIGN AND ENVIRONMENT

May 8, 20 09
Christine M. Reed
DIRECTOR OF HIGHWAYS, CHIEF ENGINEER

**PRINTED BY THE AUTHORITY
OF THE STATE OF ILLINOIS**

**DISTRICT 2
DIXON**

PROJECT ENGINEER: MASOOD AHMAD

SQUAD LEADER: AHMAD EL-AHMAD (815) 284-5944