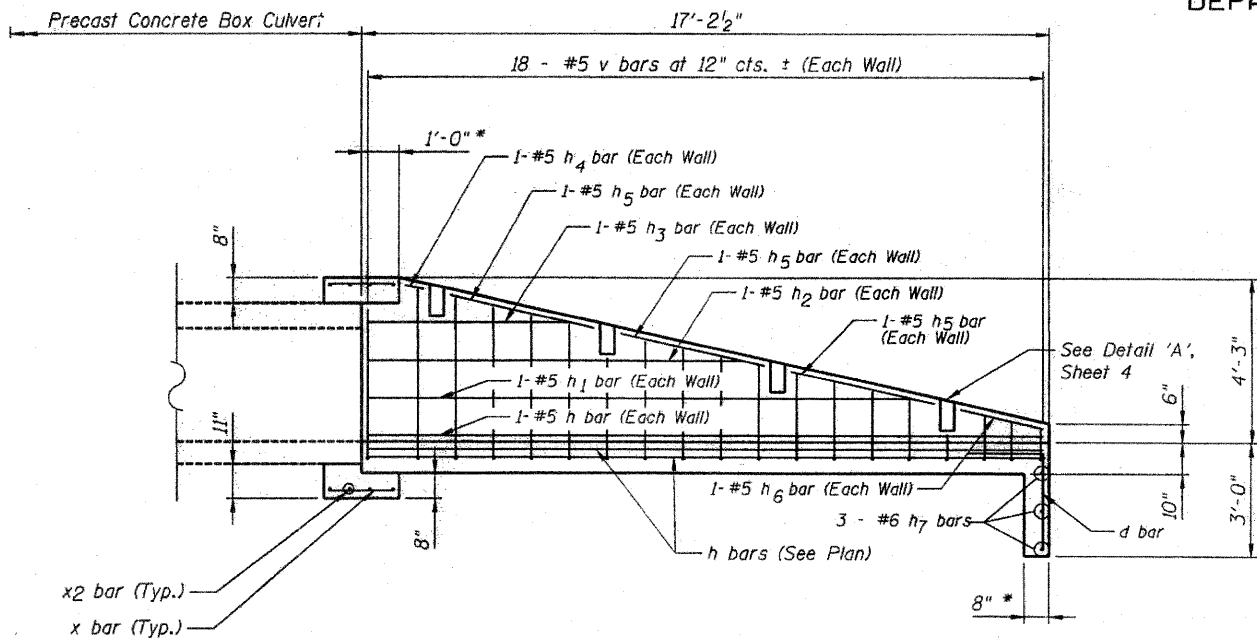
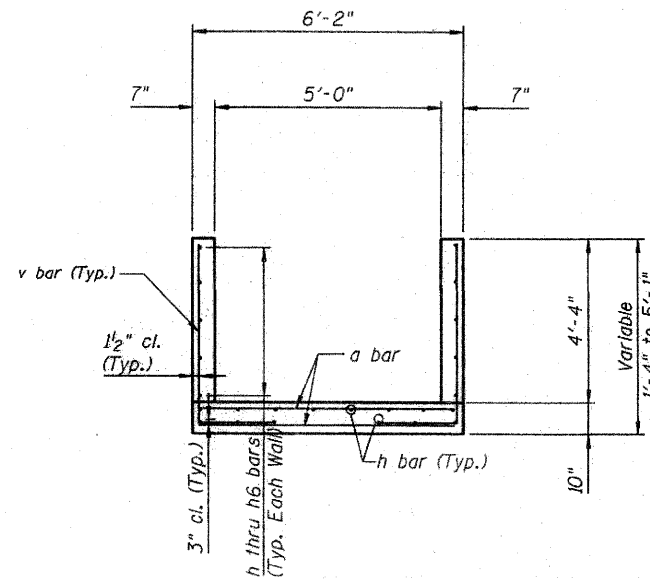


STATE OF ILLINOIS  
DEPARTMENT OF TRANSPORTATION

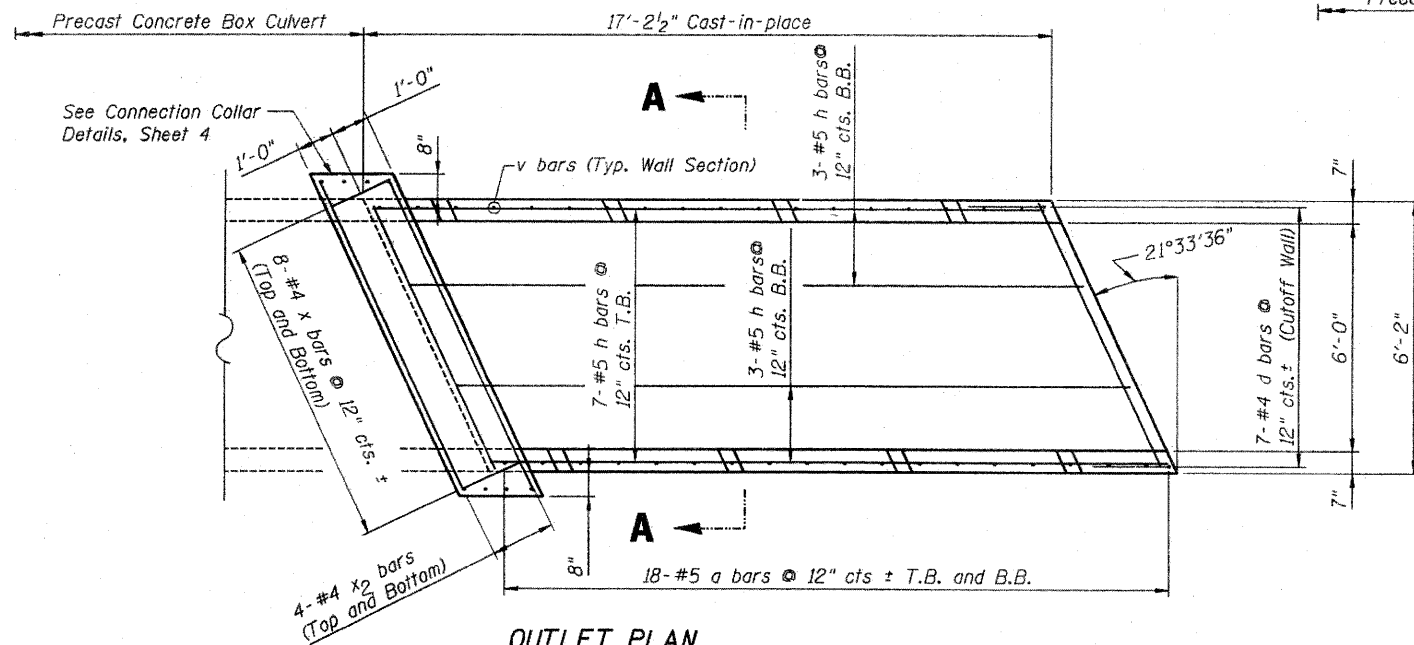


**OUTLET ELEVATION**

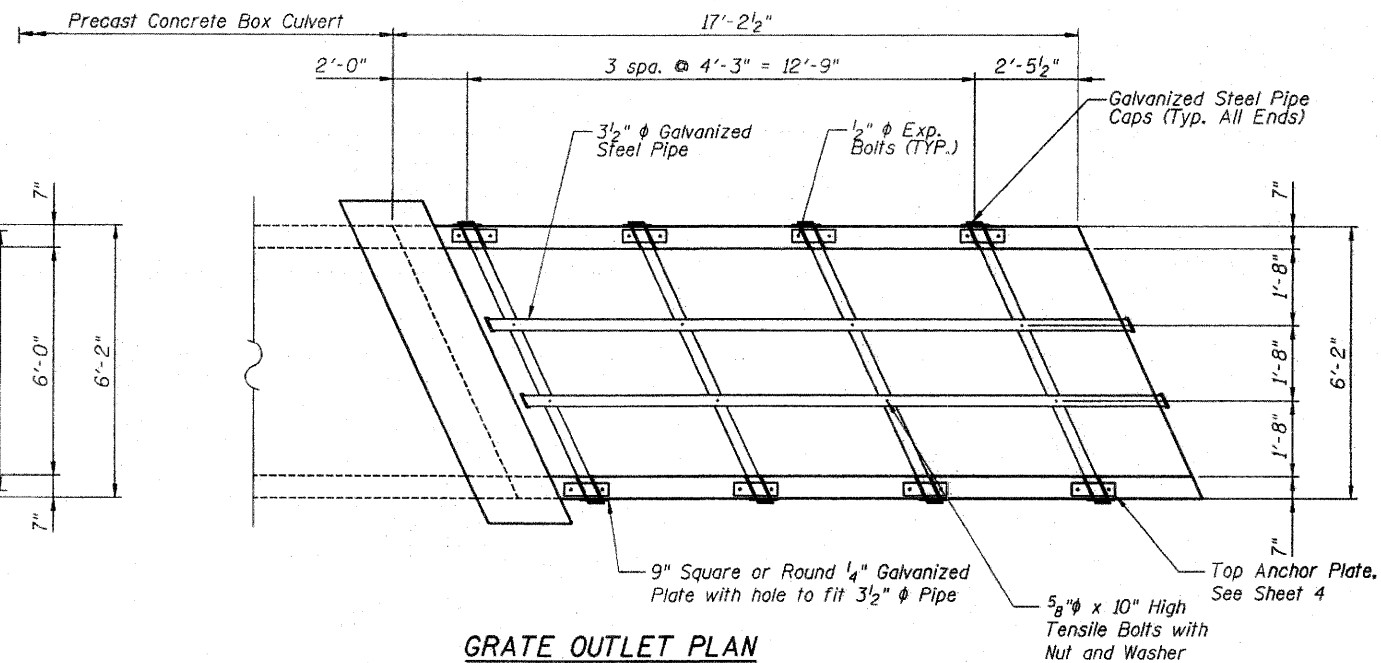
\* Measured perpendicular to  $\phi$  IL 26



**SECTION A-A**



**OUTLET PLAN**



**GRATE OUTLET PLAN**

**GRATED END SECTION NO. 2**  
**STATION 1201+61.08**  
**PLAN AND DETAILS**

**LEGEND**

T.B. = TOP OF BOTTOM SLAB  
B.B. = BOTTOM OF BOTTOM SLAB



Jennifer Anderson 10/10/08  
JENNIFER L. ANDERSON, S.E., P.E.  
LICENSE NO. 081-005858  
EXPIRES 11/2008

DESIGNED - JLA
CHECKED - SB
DRAWN - AJP
CHECKED - JLA

400 South Green Street - Suite 304  
Chicago, Illinois 60607  
Phone (312)738-1522  
Fax (312)738-9792

**KUDRNA**  
& ASSOCIATES, LTD.  
www.kudrna.com

203 North Cass Avenue  
Westmont, Illinois 60559  
Phone (630)969-3060  
Fax (630)969-3122

CIVIL ENGINEERING - PLANNING - DESIGN - LAND SURVEY - CONSTRUCTION MANAGEMENT

SHEET NO. 3	F.A.P. RTE.	SECTION	COUNTY	TOTAL SHEETS	SHEET NO.
	316	2T	OGLE	48	25
10 SHEETS	D-92-003-03		CONTRACT NO. 64851		
FED. ROAD DIST. NO.		ILLINOIS FED. AID PROJECT			