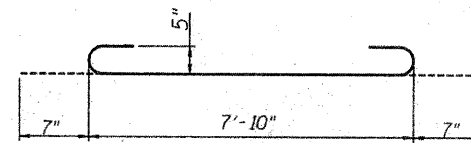
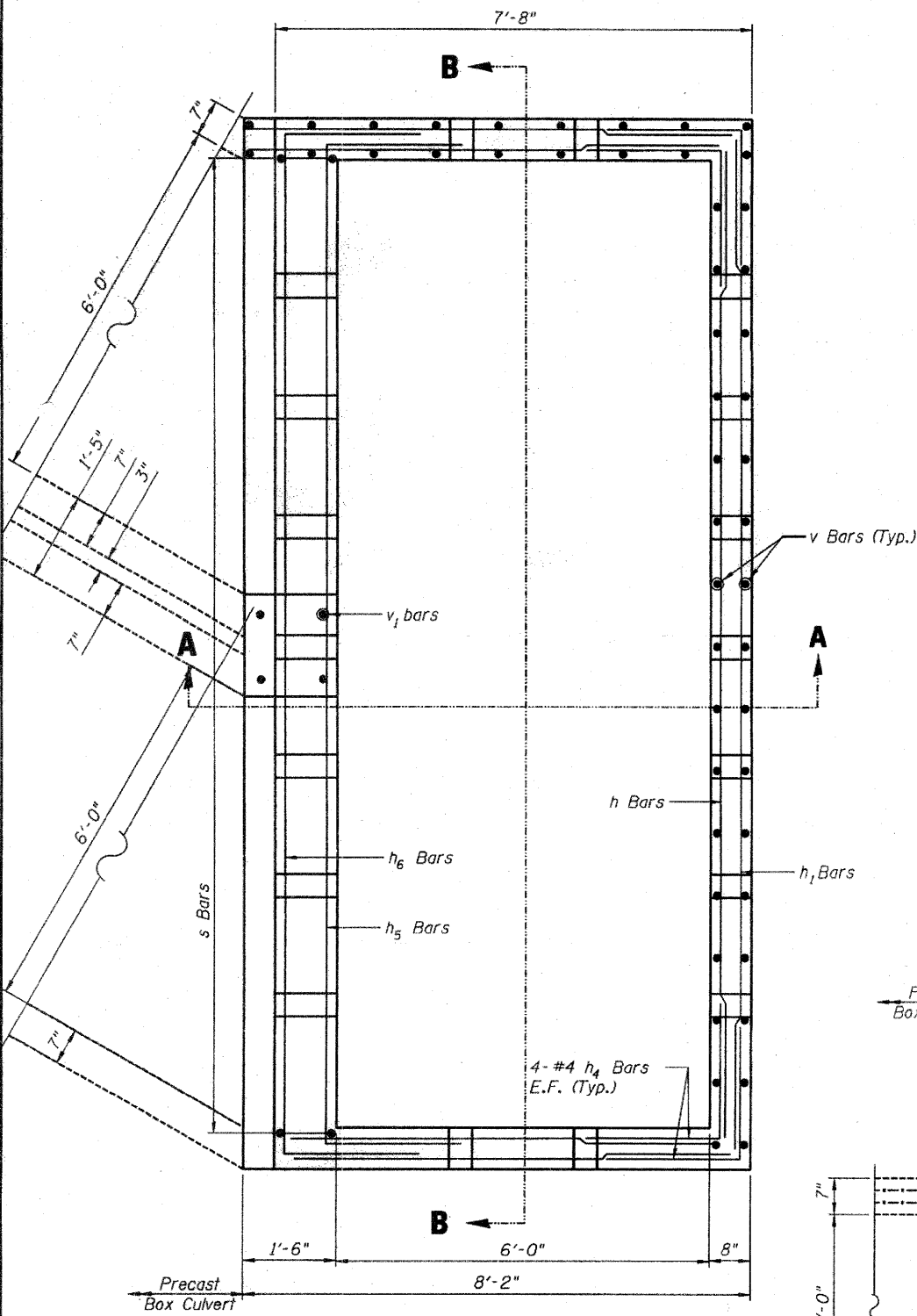


STATE OF ILLINOIS
DEPARTMENT OF TRANSPORTATION

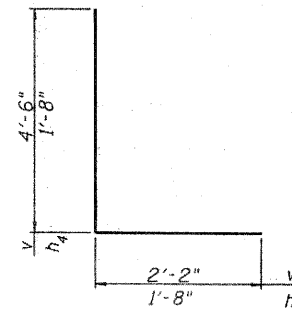
BILL OF MATERIAL

(For information only)

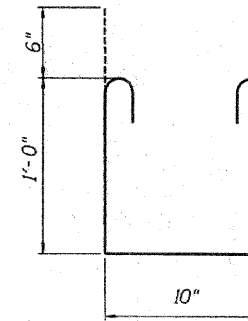
Bar	No.	Size	Length	Shape	
h	4	#4	15'-10"	—	
h ₁	4	#4	16'-6"	—	
h ₂	8	#4	7'-10"	—	
h ₃	8	#4	6'-4"	—	
h ₄	16	#4	3'-4"	—	
h ₅	3	#6	20'-11"	—	
h ₆	3	#6	21'-9"	—	
h ₇	18	#5	9'-0"	—	
h ₈	18	#4	7'-10"	—	
h ₉	6	#4	16'-6"	—	
s	7	#4	3'-10"	—	
v	72	#5	6'-8"	—	
v ₁	4	#6	4'-0"	—	
Concrete Structures				Cu. Yd.	8.6
Reinforcement Bars, Epoxy Coated				Pound	1290



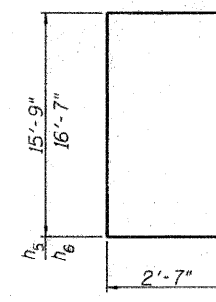
BAR h₇



BARS v and h₄



BAR s



BARS h₅ and h₆

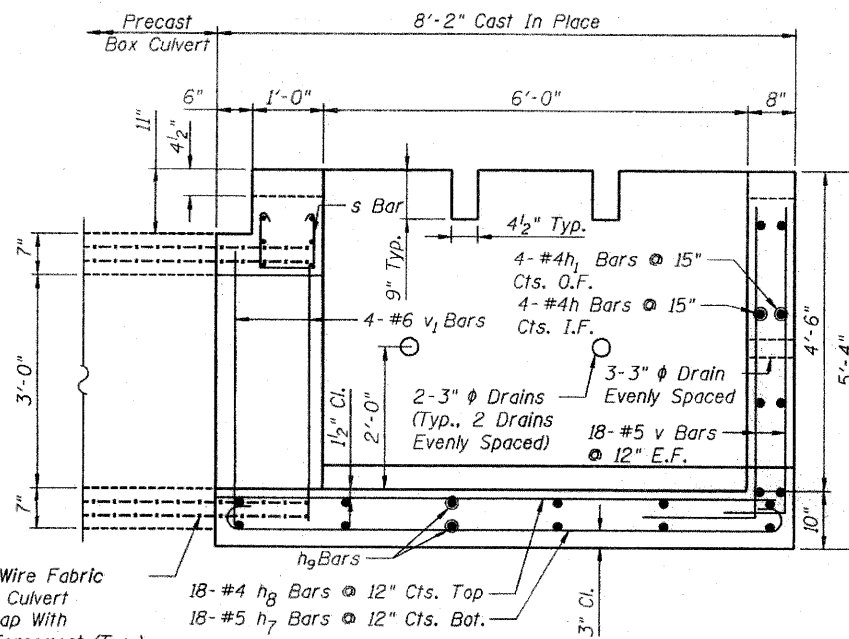
GENERAL NOTES

Reinforcement bars shall conform to the requirements of ASTM A706 Gr. 60 (IL Modified) See Special Provisions.

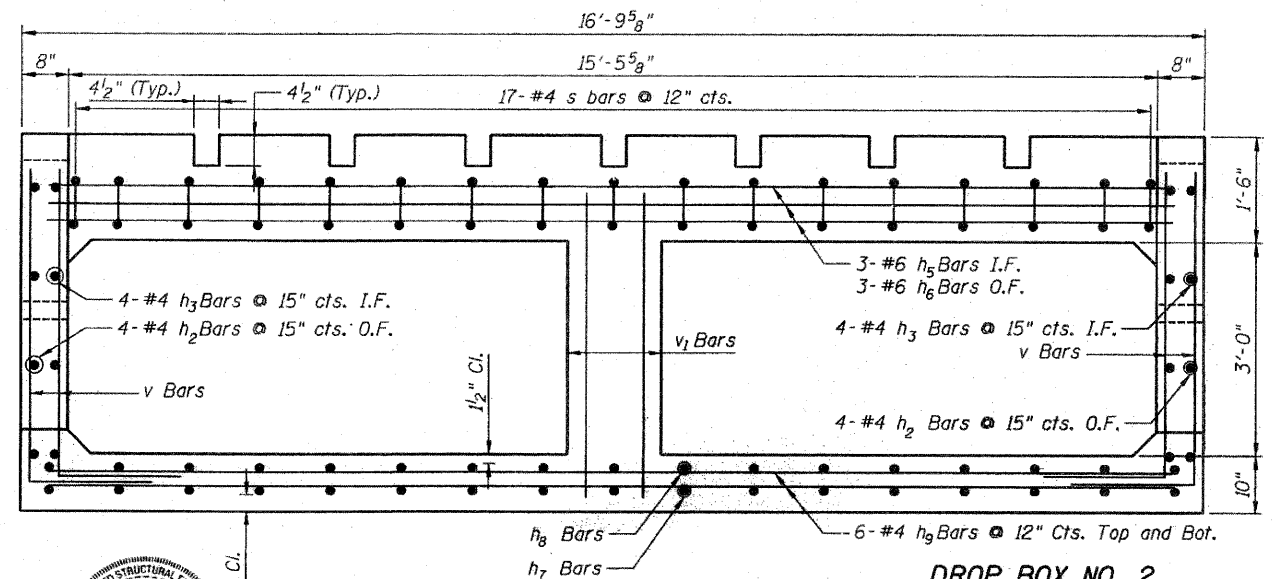
The Contractor shall be responsible for diverting the water flow from the construction area using a method meeting the approval of the Engineer. Cost included with "Drop Box No. 2".

Drain holes shall be constructed in accordance with Section 503.11.

For details of Galvanized Steel Pipe Grate, see sheet 9.



SECTION A-A



SECTION B-B

DROP BOX NO. 2
STA. 1283+39.10
REINFORCEMENT DETAILS

Extend Welded Wire Fabric
Out Of Precast Culvert
Section 1'-4" Lap With
Drop Box Reinforcement (Typ.)

400 South Green Street - Suite 304
Chicago, Illinois 60607
Phone (312)738-1522
Fax (312)738-9792

203 North Cass Avenue
Westmont, Illinois 60559
Phone (630)969-3060
Fax (630)969-3122



DESIGNED - JLA
CHECKED - SB
DRAWN - AJP
CHECKED - JLA

LEGEND

Bot. Bottom
E.F. Each Face
I.F. Inside Face
O.F. Outside Face



Jennifer L. Anderson 10/10/08
JENNIFER L. ANDERSON, S.E., P.E.
LICENSE NO: 081-005858
EXPIRES: 11/2008

SHEET NO.10 10 SHEETS	F.A.P. RTE. 316	SECTION 2T	COUNTY OGLE	TOTAL SHEETS 48	SHEET NO. 32
	D-92-003-03		CONTRACT NO. 64851		
FED. ROAD DIST. NO. - ILLINOIS FED. AID PROJECT					